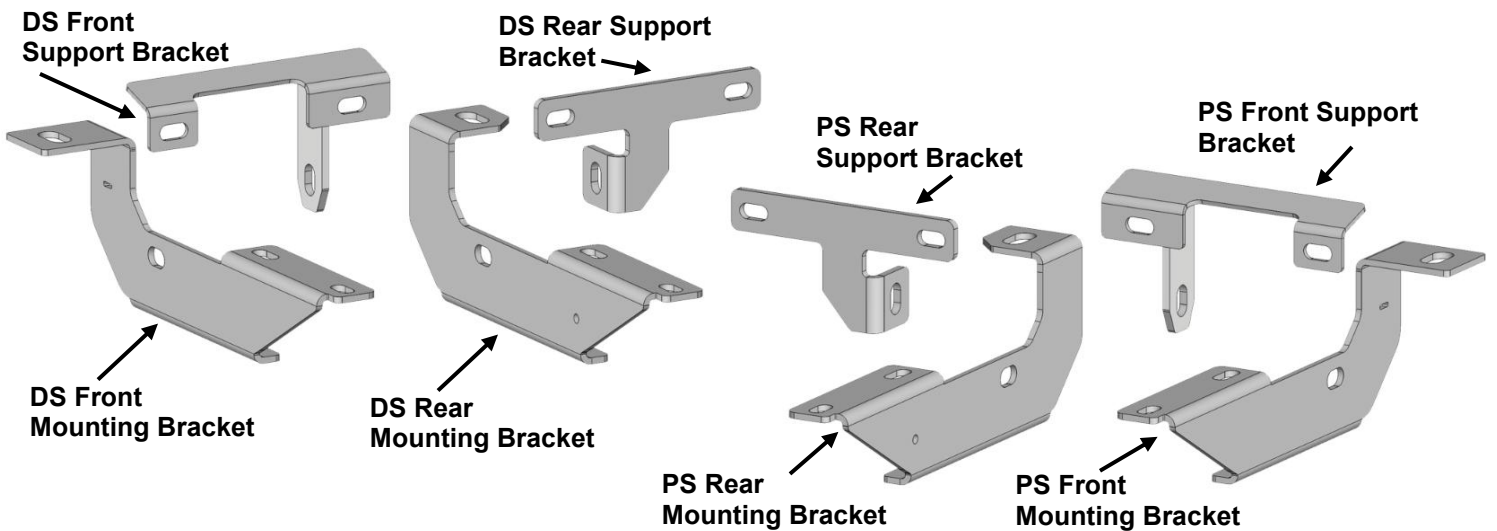
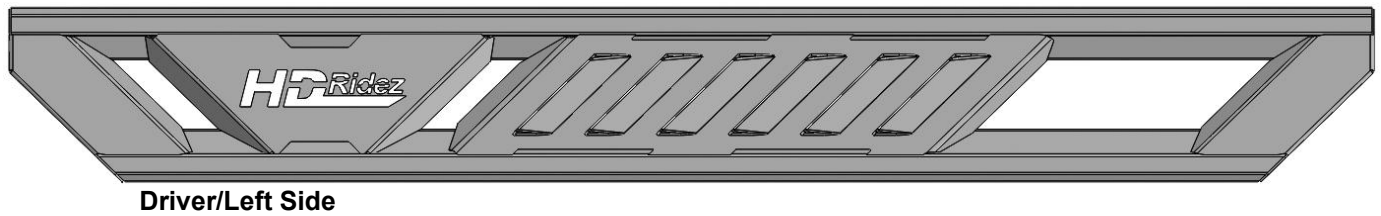
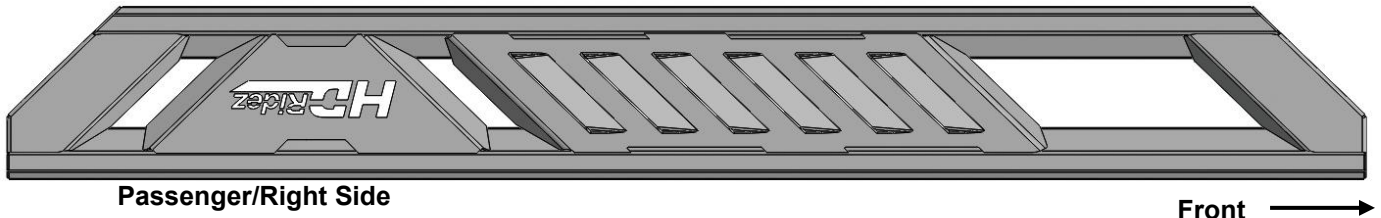


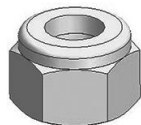
INSTALLATION INSTRUCTIONS

PARTS LIST:

Qty	Item Description	Qty	Item Description
1	Driver/Left Running Board(53")	4	10-1.5mm x 30mm Hex Bolts
1	Passenger/Right Running Board(53")	8	10mm x 24mm x 2.2mm Flat Washers
1	Driver/Left Front Mounting Bracket	4	10mm Nylon Lock Nuts
1	Passenger/Right Front Mounting Bracket	4	8-1.25mm x 35mm Hex Bolts
1	Driver/Left Rear Mounting Bracket	8	8-1.25mm x 25mm Combo Bolts
1	Passenger/Right Rear Mounting Bracket	4	8mm Lock Washers
1	Driver/Left Front Support Bracket	4	8mm x 28mm x 3mm Flat Washers
1	Passenger/Right Front Support Bracket	8	6-1.0mm x 25mm Hex Bolts
1	Driver/Left Rear Support Bracket	16	6mm x 22mm x 2mm Flat Washers
1	Passenger/Right Rear Support Bracket	8	6mm Nylon Lock Nuts



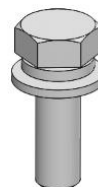
Lock Washer



Lock Nut



Flat Washer

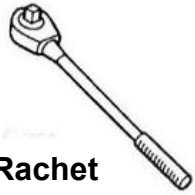


Combo Bolt



Hex Bolt

TOOLS REQUIRED



Ratchet



**10mm, 13mm,
15mm Socket**

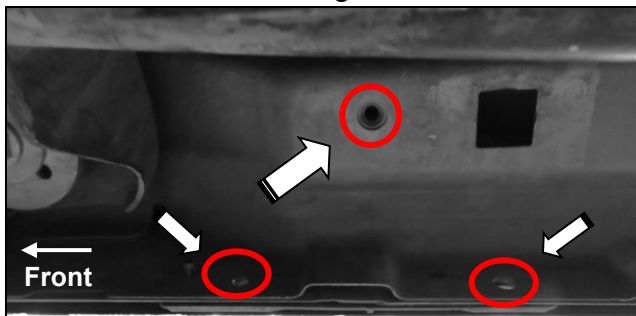


Extensions

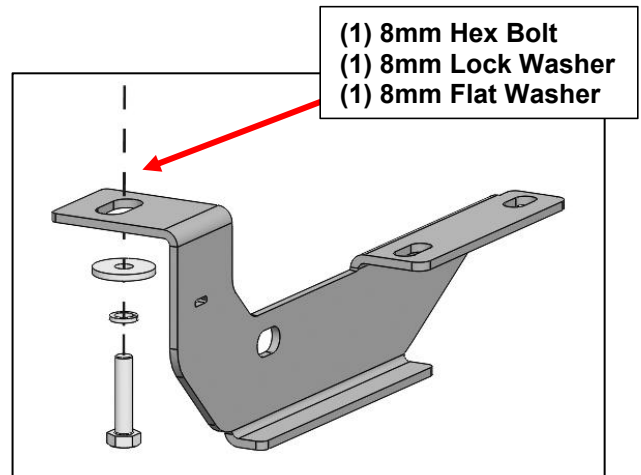


Wrench

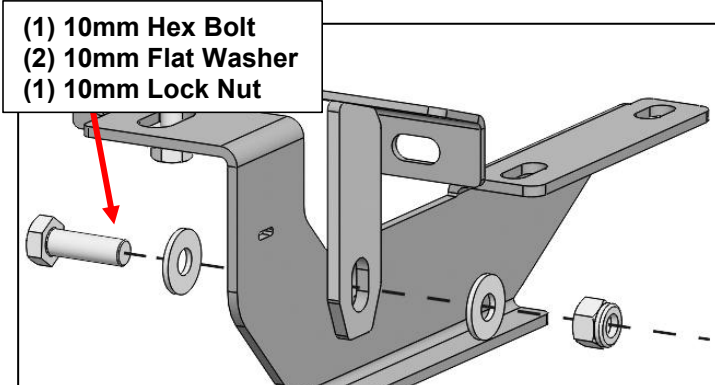
1 Follow (Fig 1 – 10) to attach the Mounting Brackets to the Passenger Side then Support Brackets to Mounting Brackets. Repeat the following steps on the Driver Side. Ensure hardware is hand tightened at this time.



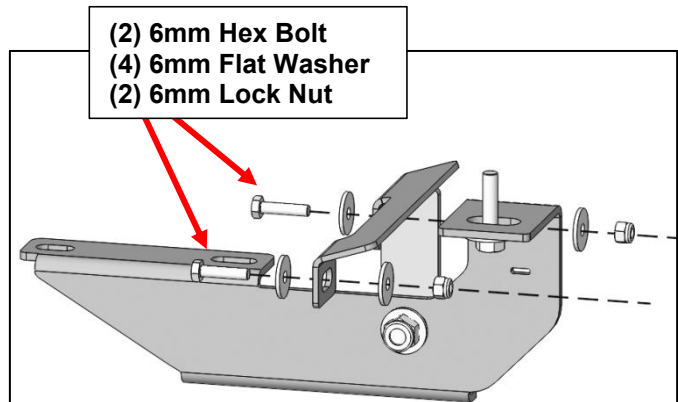
(Fig 1) Attach PS Front Mounting Bracket to threaded insert, then attach Support Bracket to Mounting Bracket and pinch weld holes



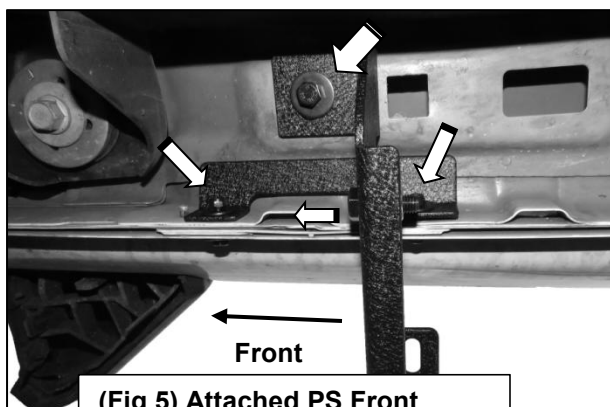
(Fig 2) Attach PS Front Mounting Bracket



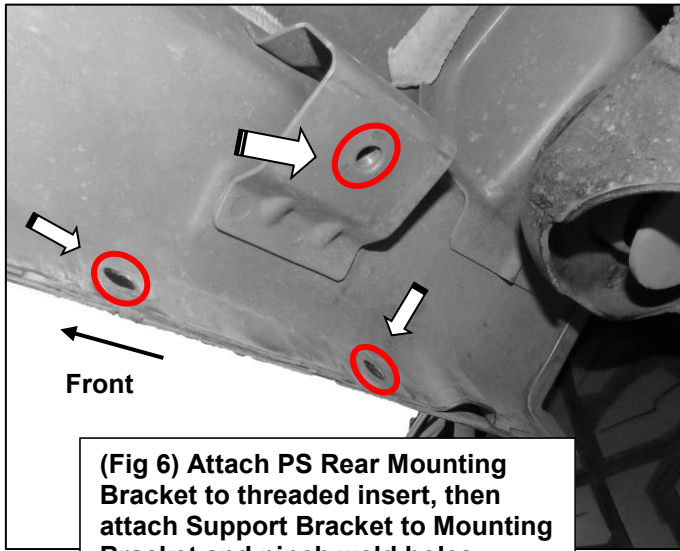
(Fig 3) Attach PS Front Support Bracket to Mounting Bracket



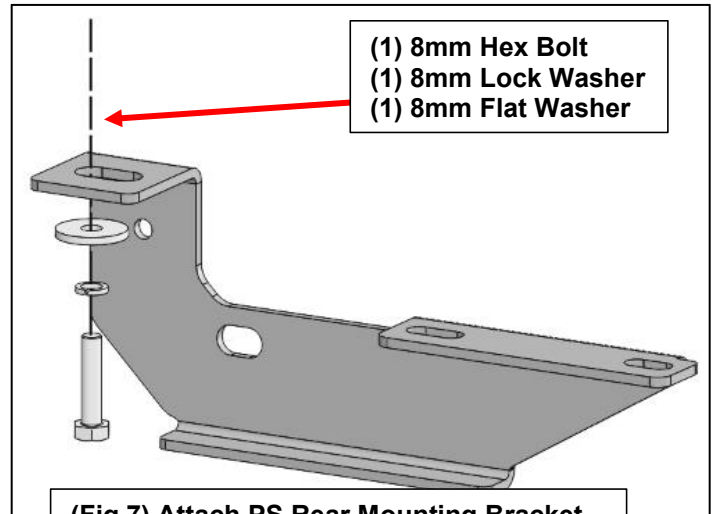
(Fig 4) Attach PS Front Support Bracket to pinch weld holes



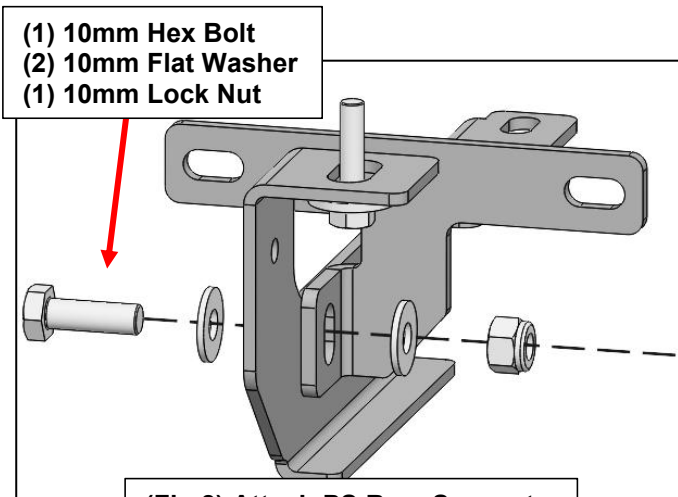
(Fig 5) Attached PS Front Mounting and Support Bracket



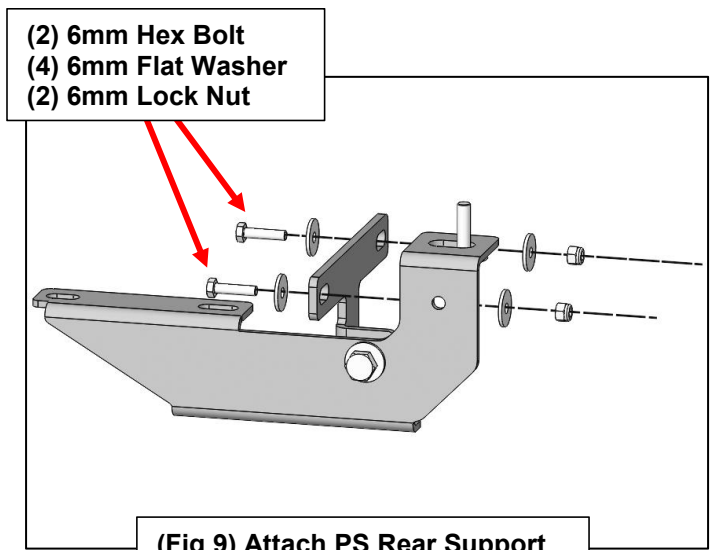
(Fig 6) Attach PS Rear Mounting Bracket to threaded insert, then attach Support Bracket to Mounting Bracket and pinch weld holes



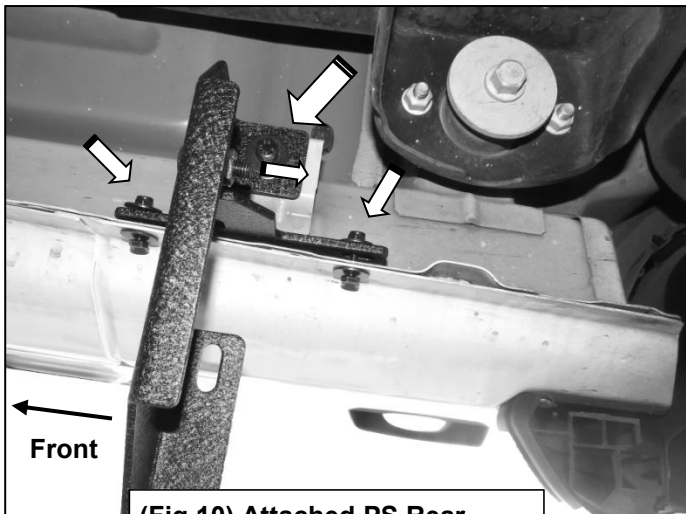
(Fig 7) Attach PS Rear Mounting Bracket



(Fig 8) Attach PS Rear Support Bracket to Mounting Bracket



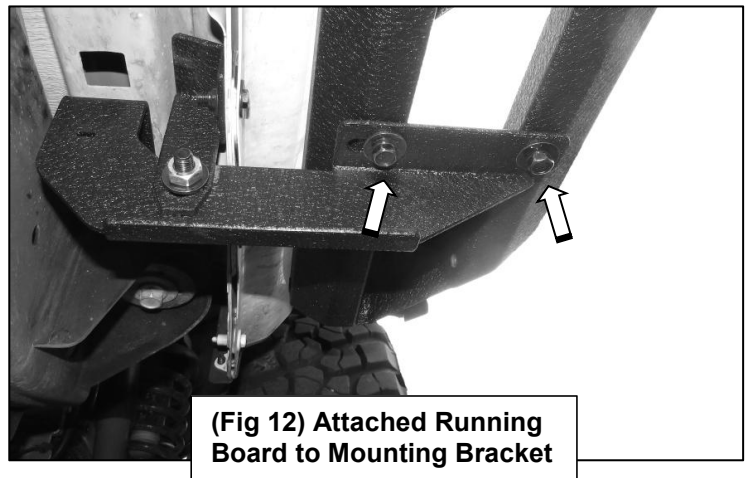
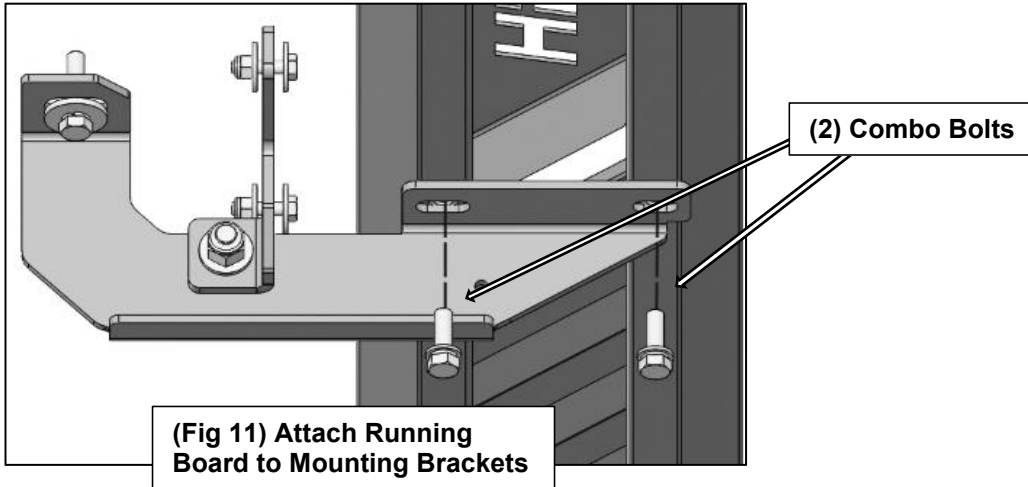
(Fig 9) Attach PS Rear Support Bracket to pinch weld holes



(Fig 10) Attached PS Rear Mounting and Support Bracket

2

Follow (Fig 11 – 12) to install the running board. Repeat the following steps on the Driver Side. Ensure hardware is hand tightened at this point.



3

Ensure Running Board is level and secure, then tighten hardware. Installation is complete. Do periodic inspections to the installation to make sure that all hardware is secure and tight.

