



PART#: IB-P158Y&H

iBoard® Series

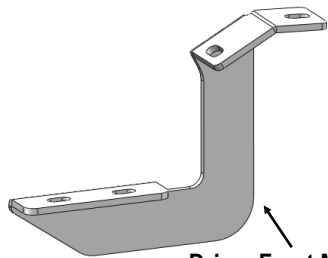
READ INSTRUCTIONS CAREFULLY BEFORE STARTING INSTALLATION. REMOVE CONTENTS FROM BOX AND VERIFY ALL PARTS ARE PRESENT. ASSISTANCE IS RECOMMENDED.

Fastener Size	Tightening Torque (ft-lbs)	Required
6mm	6-7	X
8mm	16-18	√
10mm	31-32	X
12mm	56-58	X
14mm	92-94	X

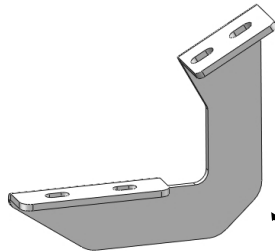
*ROCKER PANEL MOUNT
*NO DRILLING REQUIRED

PART LIST

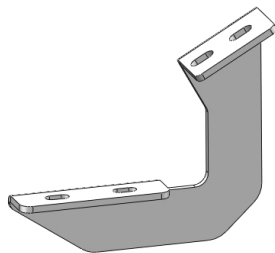
Driver Side Step Bar



Driver Front Mounting Bracket (DFM)



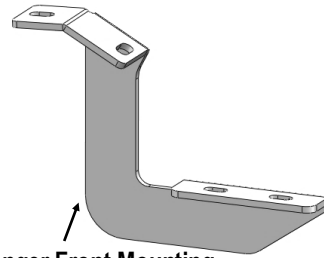
Driver Center/Rear Mounting Bracket (DCM/DRM)



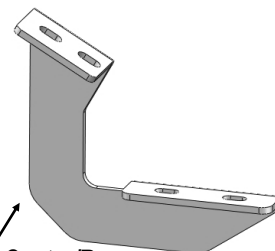
Front



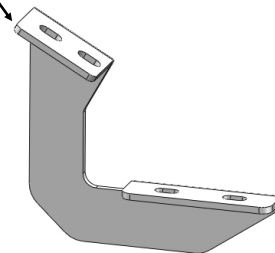
Passenger Side Step Bar



Passenger Front Mounting Bracket (PFM)




Passenger Center/Rear Mounting Bracket (PCM/PRM)






Scan for
Installation Video


Hardware Package A (For Bracket Installation)					
Item	QTY	Description	Item	QTY	Description
1#	12	M8X1.25-30mm Hex Bolts	3#	12	M8 Lock Washers
2#	12	M8 Large Flat Washers			



1 #

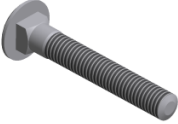


2 #




3 #


Hardware Package B (For Step Bar Installation)					
Item	QTY	Description	Item	QTY	Description
1#	12	M8X1.25-35mm Carriage Bolts	3#	12	M8 Nylon Lock Nuts
2#	12	M8 Large Flat Washers	4#	6	Sliders (Packed with Mounting Brackets)




1 #



2 #



3 #

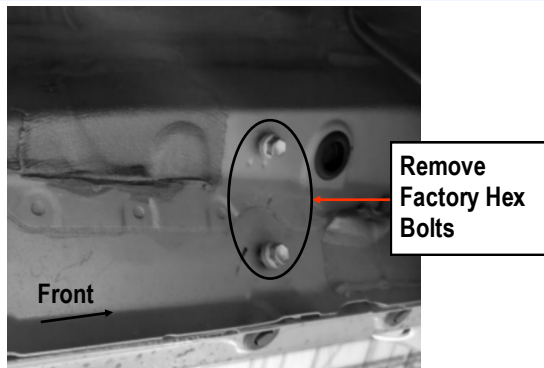


4 #



STEP 1

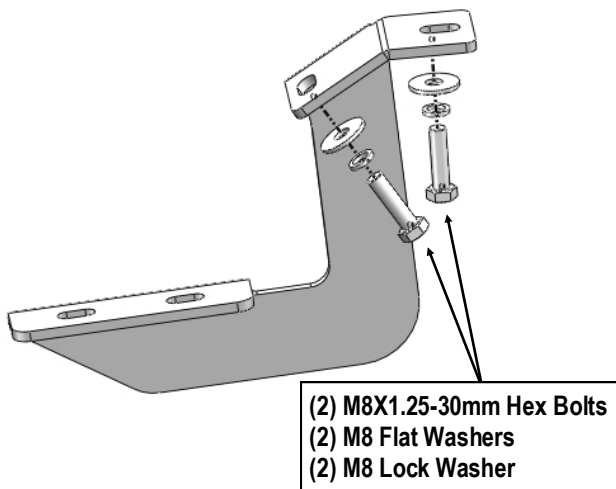
Start from the driver side front of the vehicle, remove the existing (2) factory bolts, (Fig 1). This will be the mounting location for the Driver Front Mounting Bracket.



(Fig 1) Driver Side Front Mounting Location

STEP 2

Select the Driver Front Mounting Bracket, attach the Bracket to the vehicle using (2) M8X1.25-30mm Hex Bolts, (2) M8 Lock Washers and (2) M8 Flat Washers, (Fig 2). Do not fully tighten hardware at this time.

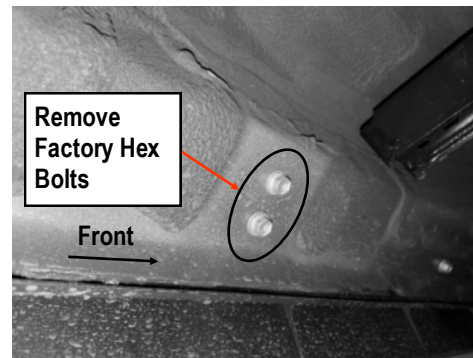


(Fig 2) Driver Front Mounting Bracket Installation

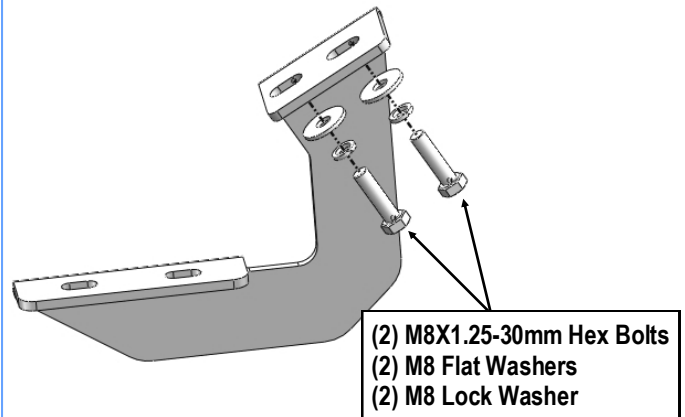
STEP 3

Move along the side panel to the Driver Side Center and Rear Mounting Locations, (Fig 3). Repeat Steps 1 & 2 to install the Driver Center & Rear Mounting Brackets, (Fig 4).

Note: The (2) mounting driver side center and rear bracket are universal.



(Fig 3) Driver Side Center & Rear Mounting Location



(Fig 4) Driver Center & Rear Mounting Bracket Installation

STEP 4

Once all (3) Driver side mounting brackets are assembled, then proceed to the Step Bar installation. (Figs 5&6)

- (1) Select (1) Slider and (2) M8X1.25-35mm Carriage Bolts;
- (2) Install (2) M8X1.25-35mm Carriage Bolts in (1) Slider.



- (3) Slide the Slider (with carriage bolts) to the **Step Bar**.
- (4) Repeat to install the other (2) sliders to the step bar.
- (5) Attach the Step Bar (with the Sliders) onto the installed mounting brackets. Position the Sliders to the installed brackets. Secure the Step Bar to the installed Brackets by using (6) M8 Large Flat Washers and (6) M8 Nylon Lock Nuts and (3) Sliders, **(Fig 6)**. Do not fully tighten hardware at this time.

Note: The Sliders are packed with the Mounting Brackets.

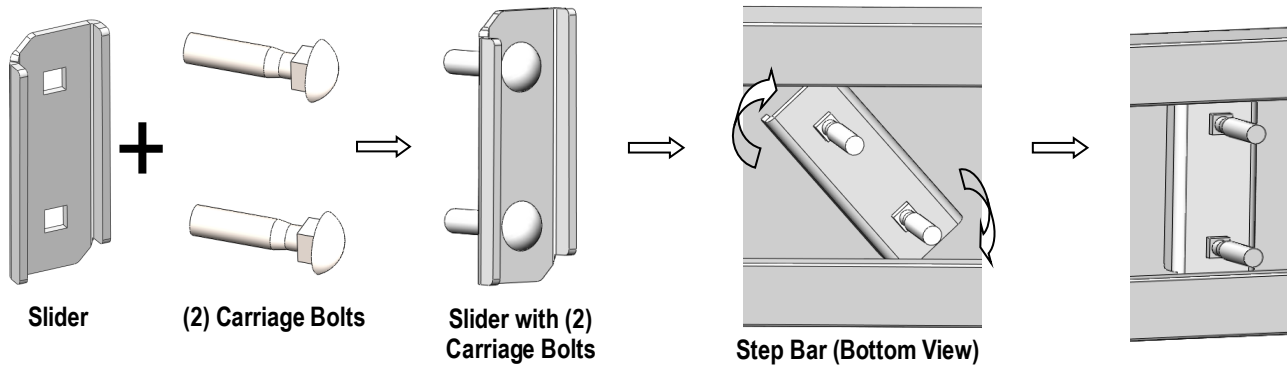
Level and adjust the Step Bar and fully tighten all hardware.

Repeat **Steps 1-4** for the other side Step Bar installation. **The installation is completed!!!**

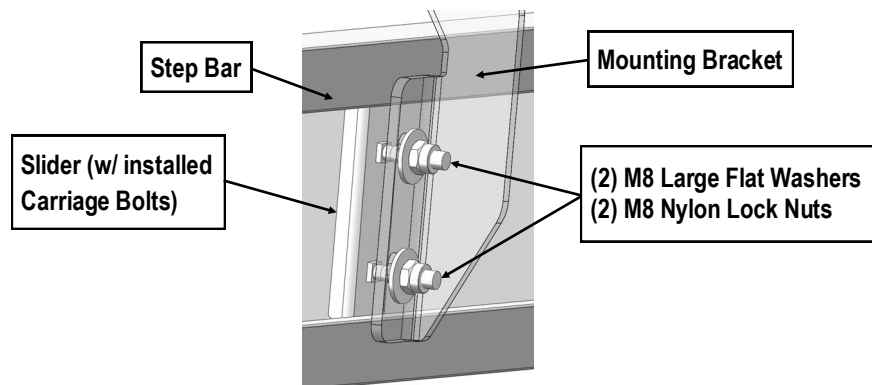
Attention

Do periodic inspections to the installation to make sure that all hardware is secure and tight.

In order to protect your bars/boards, please use mild soap/non-abrasive products for cleaning only.



(Fig 5) Slider Installation



(Fig 6) Step Bar Installation