

iBoard®

iBoard® by APS

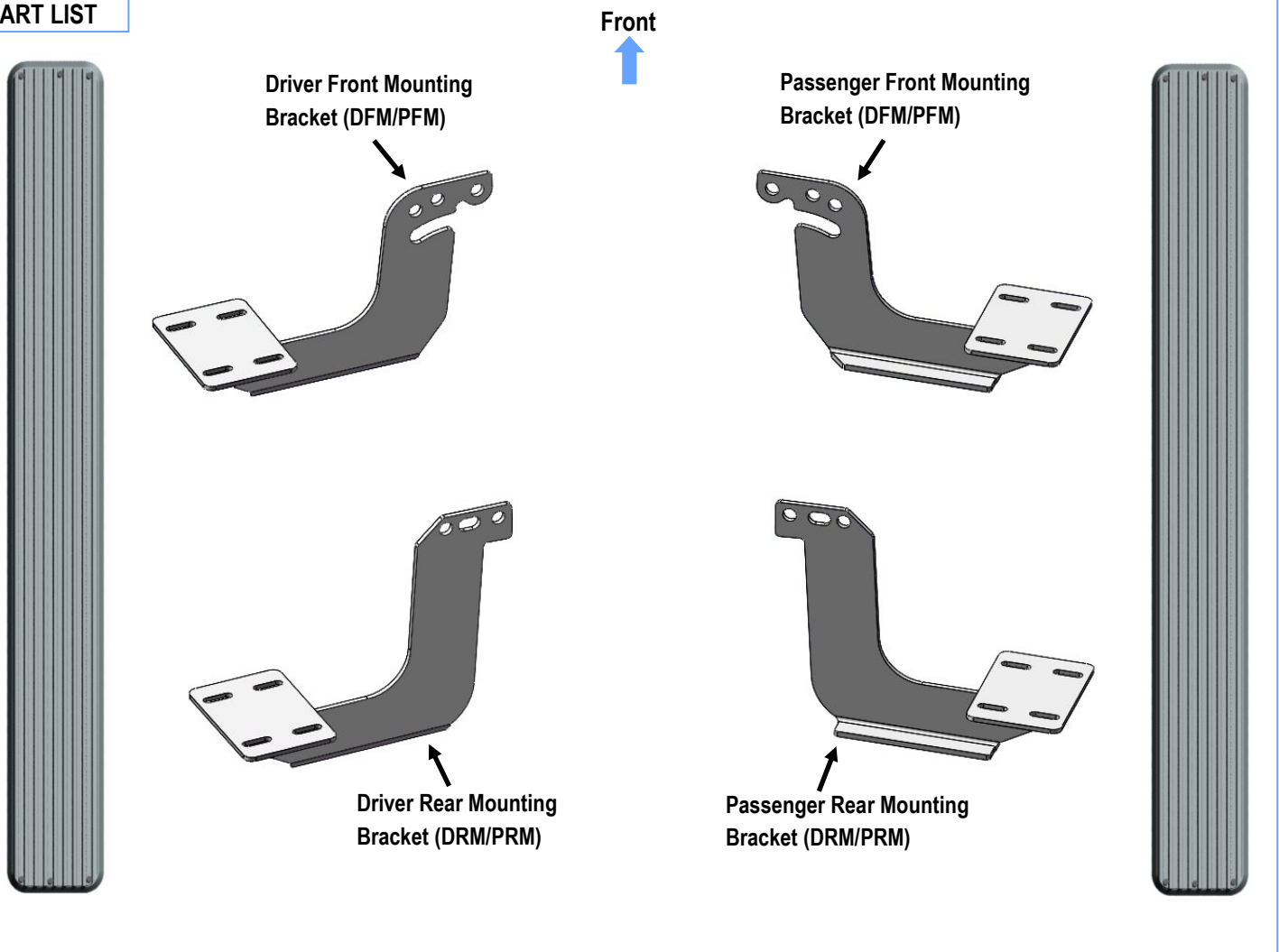
PART#: IB-057A-B

READ INSTRUCTIONS CAREFULLY BEFORE STARTING INSTALLATION. REMOVE CONTENTS FROM BOX AND VERIFY ALL PARTS ARE PRESENT. ASSISTANCE IS RECOMMENDED.

*BODY FRAME MOUNT
*NO DRILLING REQUIRED

Fastener Size	Tightening Torque (ft-lbs)
6mm	6-7
8mm	16-18
10mm	31-32
12mm	56-58
14mm	92-94

PART LIST



Customer Support: info@iboardauto.com

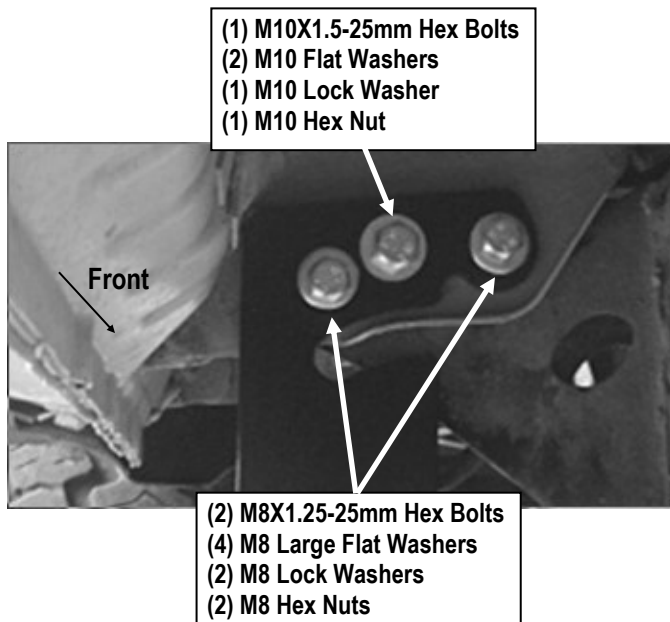
iBoard®



STEP 1

Start installation from the driver side front of the vehicle, locate the (3) mounting holes in the body support.

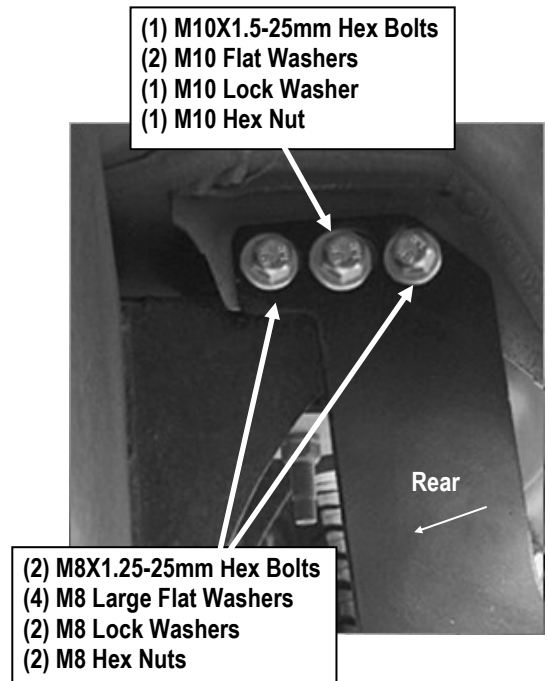
Partially attach a Driver Front Mounting Bracket (**DFM/PFM**) to the center mounting hole in the vehicle using (1) M10X1.5-25mm Hex Bolt, (2) M10 Flat Washers, (1) M10 Lock Washer and (1) M10 Hex Nut. Use the included (2) M8X1.25-25mm Hex Bolts, (2) M8 Lock Washers, (4) M8 Large Flat Washers and (2) M8 Hex Nuts in the remaining inner and outer mounting holes, (**Fig 1**). Do not fully tighten hardware at this time.



(Fig 1) Driver Front Mounting Bracket (DFM/PFM) Installation

STEP 2

Move to the driver side rear of the vehicle. Repeat **Step 1** to install the Driver Rear Mounting Bracket (**DRM/PRM**), (**Fig 2**).



(Fig 2) Driver Rear Mounting Bracket (DRM/PRM) Installation

iBoard®

STEP 3

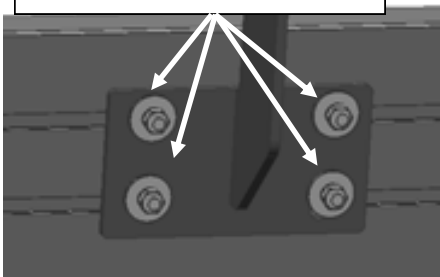
Select a Running Board. Slip (4) M6X1-20mm Square Head Bolts into each bottom channel (**Fig 3**). Carefully position the Running Board onto the (2) Mounting Brackets.

IMPORTANT: Do not slide the Running Board on the Brackets or the bottom surface of the board will be damaged. Attach the Running Board to each Mounting Bracket with (4) M6x1-20mm Square Head Bolts, (4) M6 Large Flat Washers and (4) M6 X1 Nylon Lock Nuts (**Fig 4**). Do not fully tighten at this time.



(Fig 3) Slip M6X1-20mm Square Head Bolts Into The Bottom Channels

(4) M6X1-20 Square Head Bolts
(4) M6 Large Flat Washers
(4) M6X1 Nylon Lock Nuts



(Fig 4) Running Board Installed Onto the Mounting Bracket

STEP 4

Level and adjust the Running Board and fully tighten all hardware.

STEP 5

Repeat **Steps 1-4** for other side Running Board installation. The installation is completed (**Fig 5**).



(Fig 5) Installation Completed

Attention

Do periodic inspections to the installation to make sure that all hardware is secure and tight.

In order to protect your bars/boards, please use only mild soap/non-abrasive products for cleaning.