



iBoard® Series

INSTALLATION INSTRUCTIONS

PART#: IB-R049/R951

BEFORE INSTALLATION

REMOVE CONTENTS FROM BOX. VERIFY ALL PARTS ARE PRESENT. READ INSTRUCTIONS CAREFULLY BEFORE STARTING INSTALLATION. ASSISTANCE IS RECOMMENDED. THANK YOU FOR CHOOSING OUR PRODUCT!

These instructions are provided for reference only. We strongly recommend installation by a professional installer for the best results. We are not responsible for any damage caused during installation.

***ROCKER PANEL MOUNT**

***NO DRILLING REQUIRED**

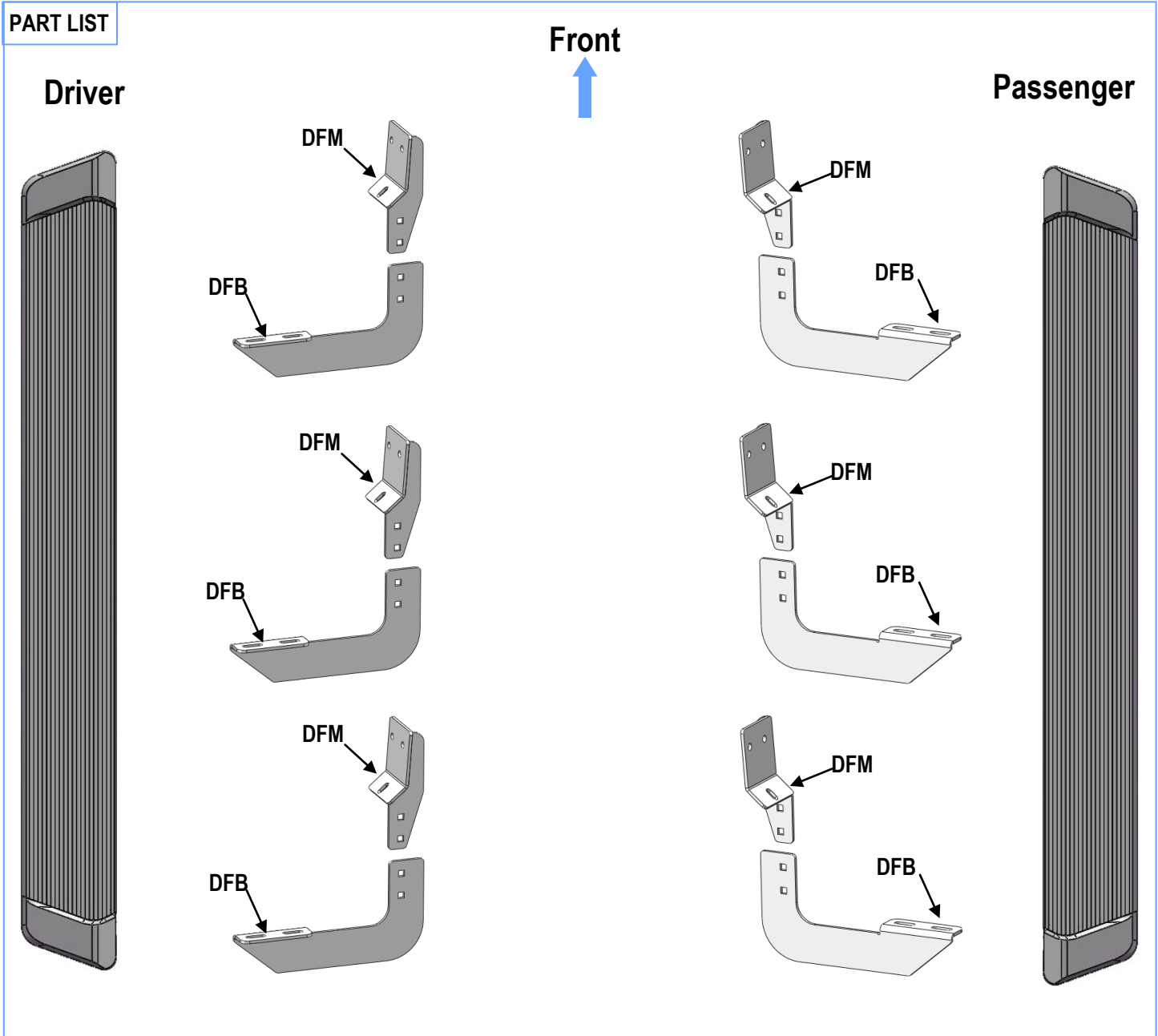
Torque Value

Fastener Size	Tightening Torque (ft-lbs)	Required
6mm	6-7	√
8mm	16-18	√
10mm	31-32	X
12mm	56-58	X
14mm	92-94	X



Scan for
Installation Video


Mounting Bracket List			
Item	QTY	Bracket Label	Description
1#	6	DFM	Mounting Bracket for Driver /Passenger Side (Universal)
2#	6	DFB	Bar Bracket for Driver /Passenger Side (Universal)






Scan for
Installation Video


Hardware Package A (For Bracket Installation)					
Item	QTY	Description	Item	QTY	Description
A1	12	M8X1.25-25mm Hex Bolt	A4	12	M8X1.25-25 Carriage Bolts
A2	12	M8 Lock Washers	A5	24	M8 Flat Washers
A3	6	M8 Hex Flange Nuts	A6	12	M8 Nylon Lock Nuts



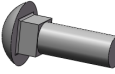
A1




A2




A3



A4

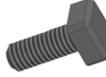


A5




A6


Hardware Package B (For Running Board Installation)					
Item	QTY	Description	Item	QTY	Description
B1	12	M6X1-20mm Square Head Bolts	B3	12	M6 Nylon Lock Nuts
B2	12	M6 Large Flat Washers			



B1



B2



B3

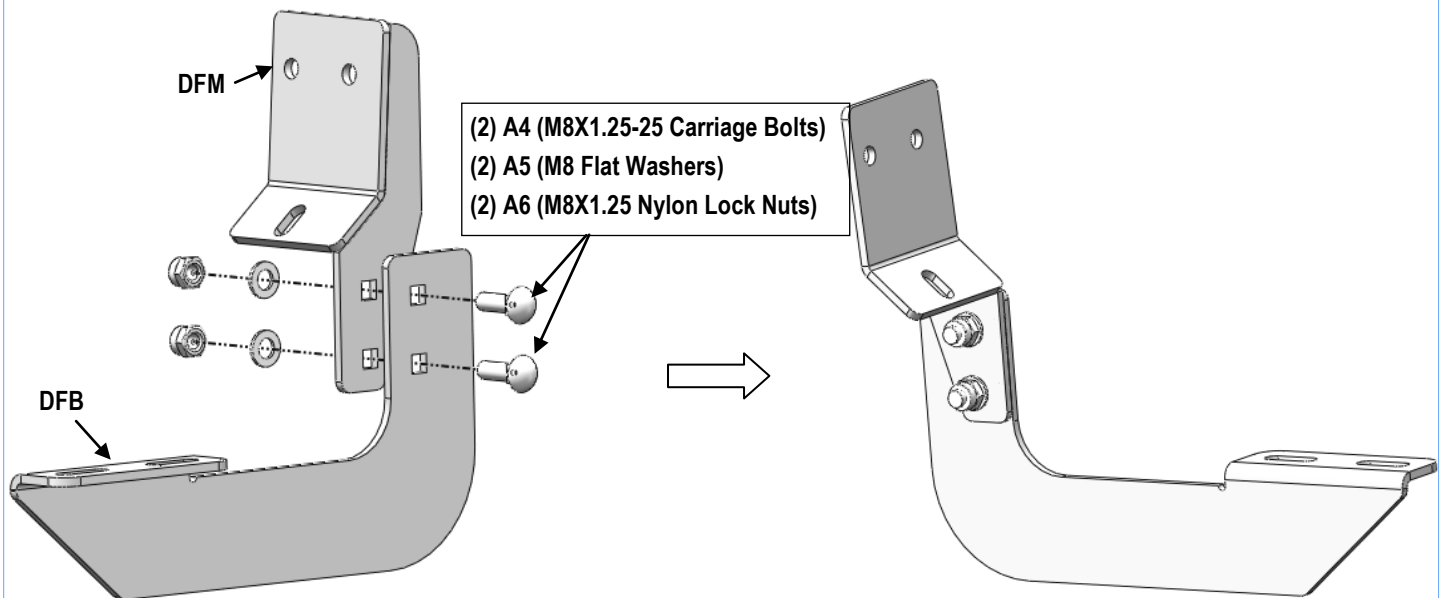


STEP 1: Assemble the Mounting Brackets (DFM+DFB)

1. Assemble the (1) Mounting Bracket (DFM+DFB) (Fig 1) with:
 - (2) A4 (M8X1.25-25 Carriage Bolts)
 - (2) A5 (M8 Flat Washers)
 - (2) A6 (M8X1.25 Nylon Lock Nuts)
2. Repeat to assemble the (5) remaining Mounting Brackets (DFM+DFB) .

Note: All (6) Mounting Brackets (DFM+DFB) are universal.

Do not fully tighten hardware at this time.

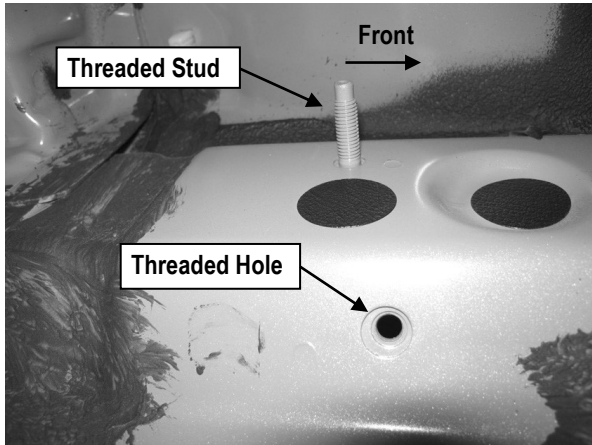


(Fig 1) Mounting Bracket (DFM+DFB) Assembly

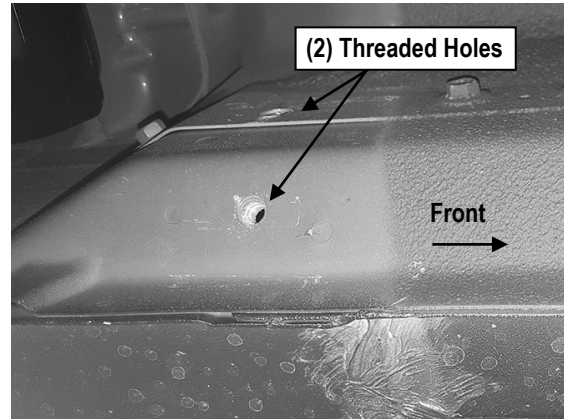
STEP 2: Locate Driver Side Rear Mounting Location

Locate the factory threaded holes or stud located on the driver side inner body panel, (Figs 2 & 3).

NOTE: Remove the plastic plug or any insulation on the side panel to locate the threaded holes.



(Fig 2) Up To 2015 Typical Driver Side Rear Mounting Location
(Note: Remove Plastic Plug To Locate Factory Threaded Hole)



(Fig 3) 2016-On Typical Driver Side Rear Mounting Location
(Note: Two Factory Threaded Holes Only)

STEP 3: Driver Side Mounting Brackets (DFM+DFB) Installation

1. Attach the Assembled (1) Mounting Bracket (**DFM+DFB**) onto the Driver Side Front Mounting Location as shown.

(1) Models with threaded stud (Fig 4):

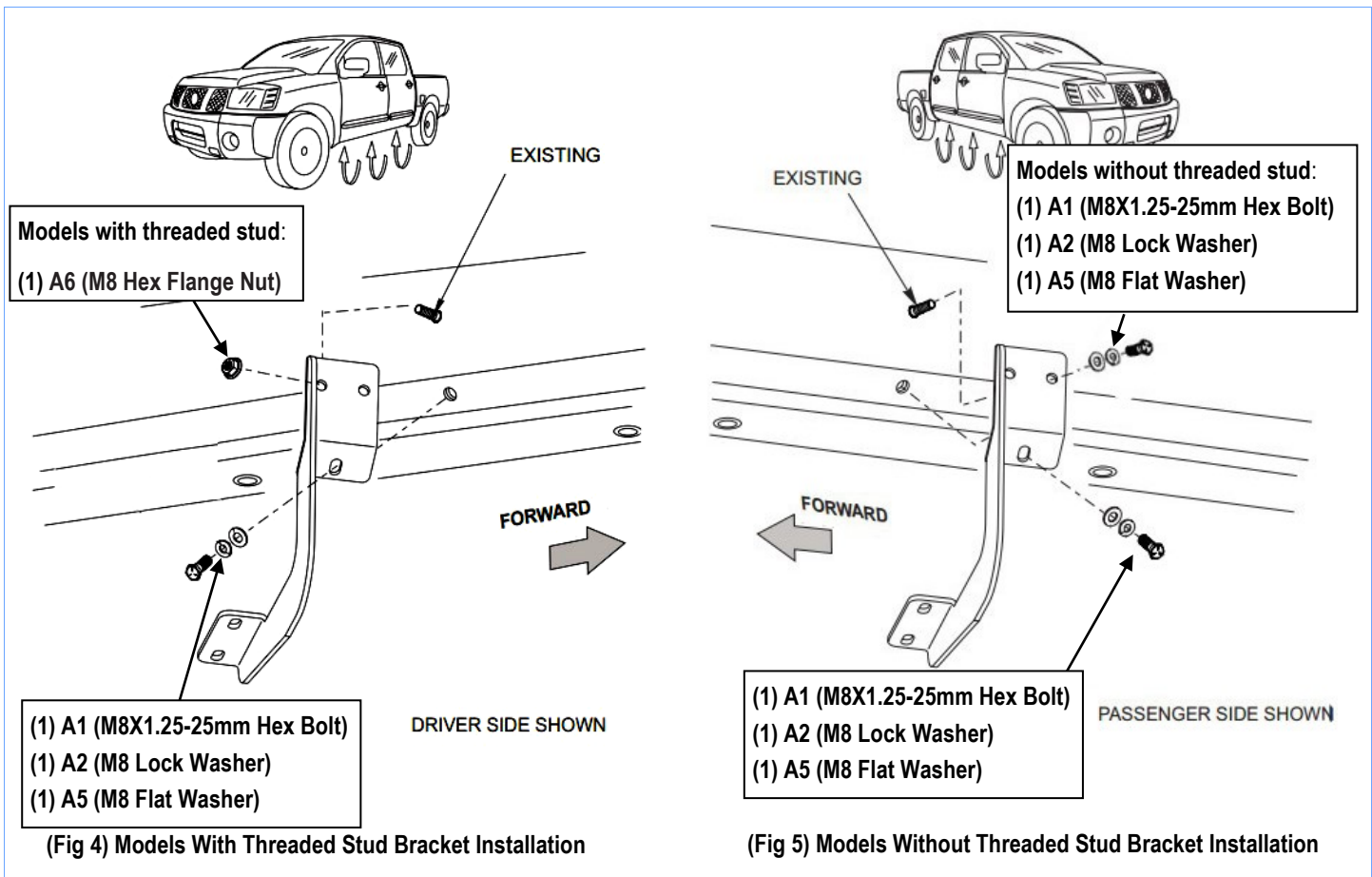
- a. Attach the Mounting Bracket (**DFM+DFB**) to stud with (1) A6 (M8 Nylon Lock Nut).
- b. Secure the bracket to the lower threaded hole with:
 - (1) A1 (M8X1.25-25mm Hex Bolt)
 - (1) A2 (M8 Lock Washer)
 - (1) A5 (M8 Flat Washer)

(2) Models without threaded stud (Fig 5):

- a. Attach the Mounting Bracket (**DFM+DFB**) to the upper threaded hole with:
 - (1) A1 (M8X1.25-25mm Hex Bolt)
 - (1) A2 (M8 Lock Washer)
 - (1) A5 (M8 Flat Washer)
- b. Secure the bracket to the lower threaded hole with:
 - (1) A1 (M8X1.25-25mm Hex Bolt)
 - (1) A2 (M8 Lock Washer)
 - (1) A5 (M8 Flat Washer)

2. Repeat to attach the remaining assembled (2) Mounting Brackets (**DFM+DFB**) .

Do not fully tighten hardware at this time.



STEP 4: Driver Side Running Board Installation

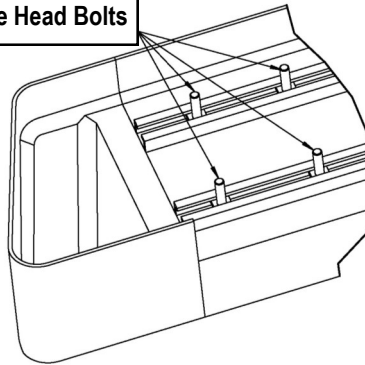
Once all (3) mounting brackets are installed, then proceed to the Running Board installation.

- (1) Select a Running Board. Slide (3) B1 M6X1-20mm Square Head Bolts into each bottom channel (**Fig 6**).
- (2) Carefully position the Running Board onto the (3) Mounting Brackets.
- (3) Attach the Running Board to each Mounting Bracket (**Fig 7**) with:
 - (2) B1 (M6X1-20mm Square Head Bolts)
 - (2) B2 (M6 Large Flat Washers)
 - (2) B3 (M6 Nylon Lock Nuts)

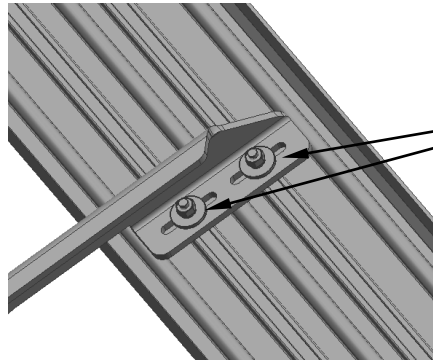
Note: Do not slide the Running Board on the Brackets or the bottom surface of the board will be damaged.



M6X1-20mm Square Head Bolts



(Fig 6) Slip M6X1-20mm Square Head Bolts Into The Bottom Channels



(2) B1 (M6X1-20mm Square Head Bolts)
(2) B2 (M6 Large Flat Washers)
(2) B3 (M6 Nylon Lock Nuts)

(Fig 7) Running Board Installed Onto Mounting Bracket

STEP 5: Driver Side Running Board Adjustment

- Level and adjust the assembled Running Board properly.
- Tighten all 6mm hardware with 6-7 ft-lbs torque and 8mm hardware with 16-18 ft-lbs torque.

STEP 6: The Other Side Running Board Installation

Repeat **Steps 2-5** for the Other Side Running Board Installation.
And then installation is completed!!!

Attention

Do periodic inspections to the installation to make sure that all hardware is secure and tight.
In order to protect your bars/boards, please use mild soap/non-abrasive products for cleaning only.