



iBoard® Series

INSTALLATION INSTRUCTIONS

PART#: IB-R407

BEFORE INSTALLATION

REMOVE CONTENTS FROM BOX. VERIFY ALL PARTS ARE PRESENT. READ INSTRUCTIONS CAREFULLY BEFORE STARTING INSTALLATION. ASSISTANCE IS RECOMMENDED. THANK YOU FOR CHOOSING OUR PRODUCT!

These instructions are provided for reference only. We strongly recommend installation by a professional installer for the best results. We are not responsible for any damage caused during installation.

***ROCKER PANEL MOUNT**

***DRILLING IS REQUIRED**

Torque Value

Fastener Size	Tightening Torque (ft-lbs)	Required
6mm	6-7	√
8mm	16-18	√
10mm	31-32	√
12mm	56-58	X
14mm	92-94	X



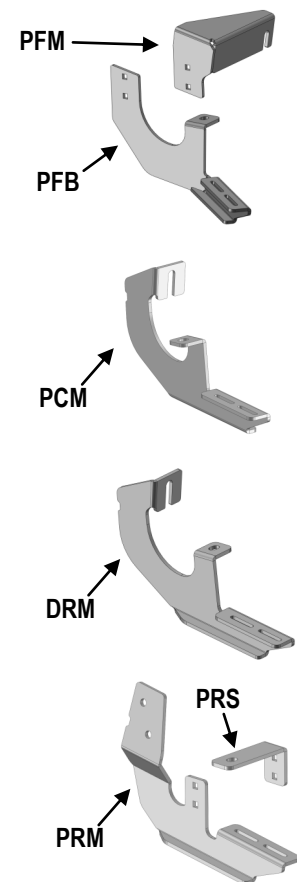
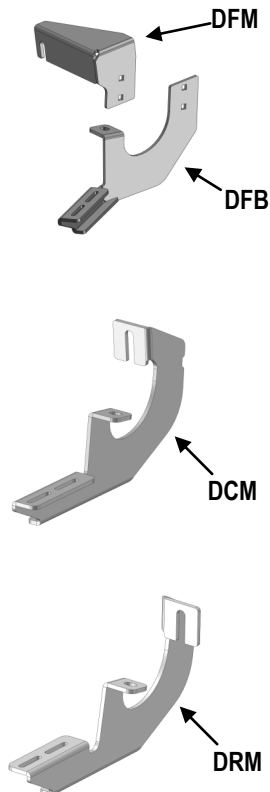
Mounting Bracket List							
Item	QTY	Bracket Label	Description	Item	QTY	Bracket Label	Description
1#	1	DFM	Mounting Bracket for Driver Front	6#	1	PFB	Bar Bracket for Passenger Front
2#	1	DFB	Bar Bracket for Driver Front	7#	1	PCM	Mounting Bracket for Passenger Center
3#	1	DCM	Mounting Bracket for Driver Center	8#	1	PRM	Mounting Bracket for Passenger Rear
4#	2	DRM	Mounting Bracket for Driver Rear/ Passenger Center 1	9#	1	PRS	Support Bracket for Passenger Rear
5#	1	PFM	Mounting Bracket for Passenger Front				

PART LIST

Front
↑



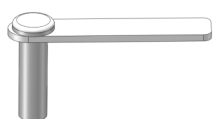
Driver Side



Passenger Side



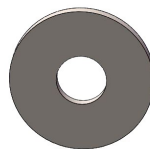
Hardware Package A (For Bracket Installation)					
Item	QTY	Description	Item	QTY	Description
A1	13	M10 Bolt Plates	A7	2	M8 Lock Washers
A2	6	M10 Plastic Washers	A8	2	M8 Hex Nuts
A3	13	M10 Large Flat Washers	A9	6	M8X1.25-25 Carriage Bolts
A4	13	M10 Nylon Lock Nuts	A10	6	M8 Flat Washers
A5	2	M8X1.25-30mm Hex Bolts	A11	6	M8 Nylon Lock Nuts
A6	4	M8 Large Flat Washers			



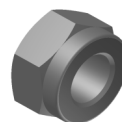
A1



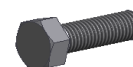
A2



A3



A4



A5



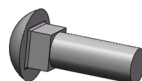
A6



A7



A8



A9

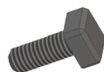


A10



A11

Hardware Package B (For Step Bar Installation)					
Item	QTY	Description	Item	QTY	Description
B1	14	M6X1-20mm Square Head Bolts	B3	14	M6 Nylon Lock Nuts
B2	14	M6 X-Large Flat Washers			



B1



B2



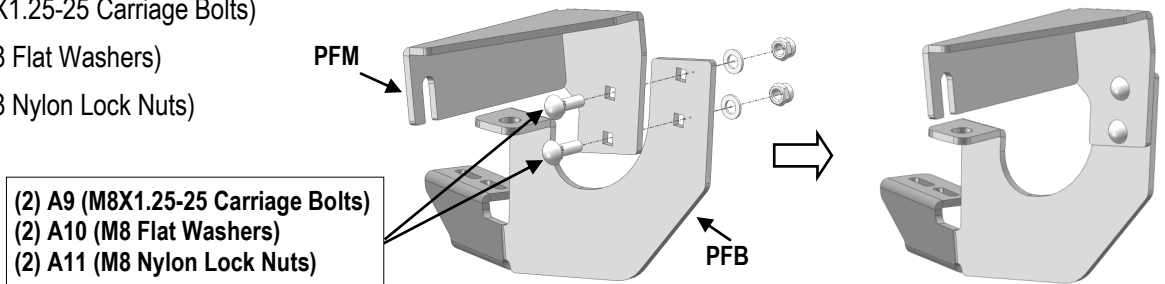
B3



STEP 1: Assemble Passenger Front Mounting Bracket

Assemble Passenger Front Mounting Bracket (PFM) and Passenger Front Bar Bracket (PFB) (See Fig 1) with

- (2) A9 (M8X1.25-25 Carriage Bolts)
- (2) A10 (M8 Flat Washers)
- (2) A11 (M8 Nylon Lock Nuts)

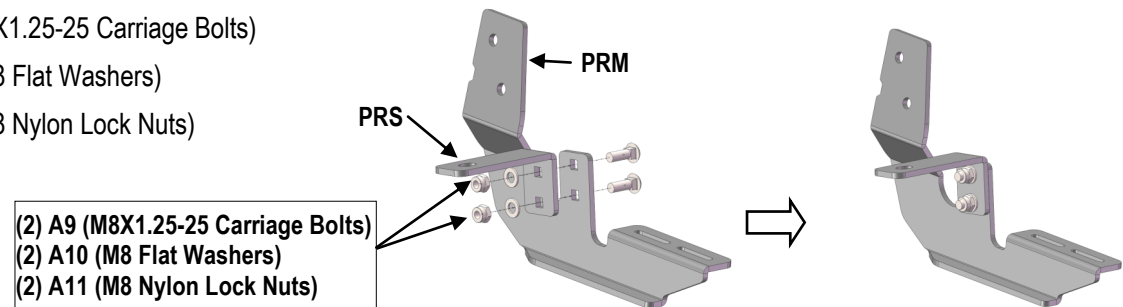


(Fig 1) Passenger Front Mounting Brackets Assembly

STEP 2: Assemble Passenger Rear Mounting Bracket

Assemble Passenger Rear Mounting Bracket (PRM) and Passenger Rear Support Bracket (PRS) (See Fig 2) with

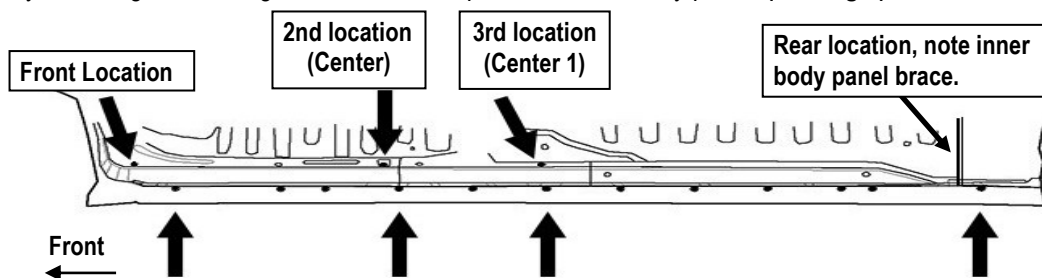
- (2) A9 (M8X1.25-25 Carriage Bolts)
- (2) A10 (M8 Flat Washers)
- (2) A11 (M8 Nylon Lock Nuts)



(Fig 2) Passenger Rear Mounting Brackets Assembly

STEP 3: Locate Passenger Side Mounting Locations

Locate the factory mounting holes along the bottom of the pinch weld and body panel. (See Fig 3)



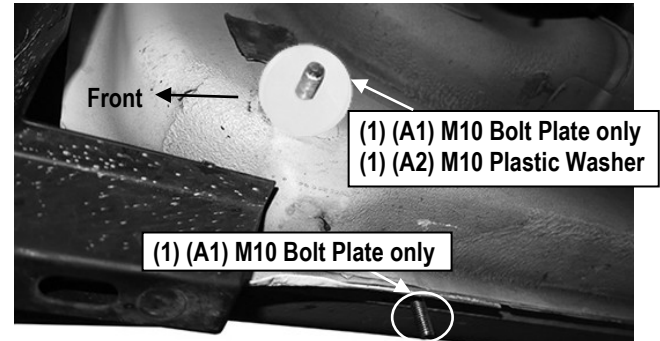
(Fig 3) Passenger Side Mounting Locations



STEP 4: Install Passenger Side Front/Center /Center 1 Mounting Brackets

(1) Insert (2) M10 Bolt Plates into the Passenger Side Front Mounting holes and thread (1) M10 Plastic Washer onto the upper Bolt Plate to hold the bolt plate in place. (See Fig 4)

IMPORTANT: The Plastic Washer is designed to prevent the Bolt Plate from falling into the body panel and to aid in Bracket installation. The Plastic Washers are not required for the Bolt Plates installed along the bottom of the outer body panel (outside of the pinch weld).

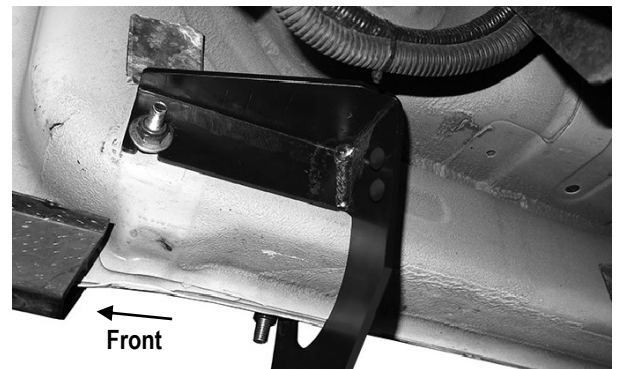
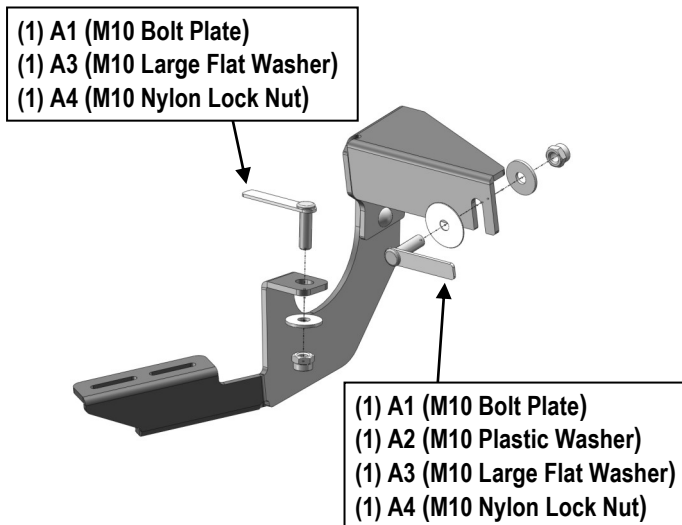


(Fig 4) M10 Bolt Plates installed (On Passenger Front Mounting Bracket Location)

(2) Secure the Assembled Passenger Front Mounting Bracket (**PFM+PFB**) to the Passenger Side Front Mounting Location (See Fig 5) with:

- (2) A1 (M10 Bolt Plate)
- (1) A2 (M10 Plastic Washer)
- (2) A3 (M10 Large Flat Washer)
- (2) A4 (M10 Nylon Lock Nut)

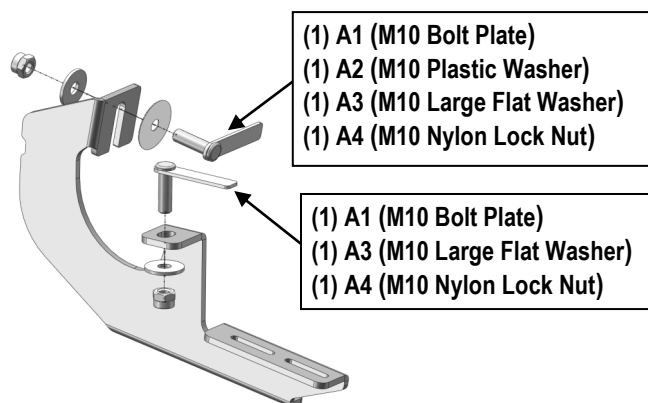
Note: Do not fully tighten hardware at this time.



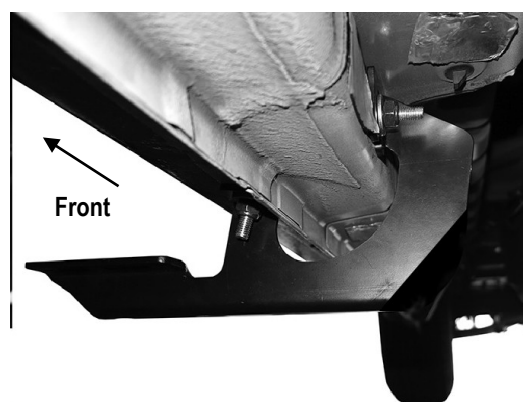
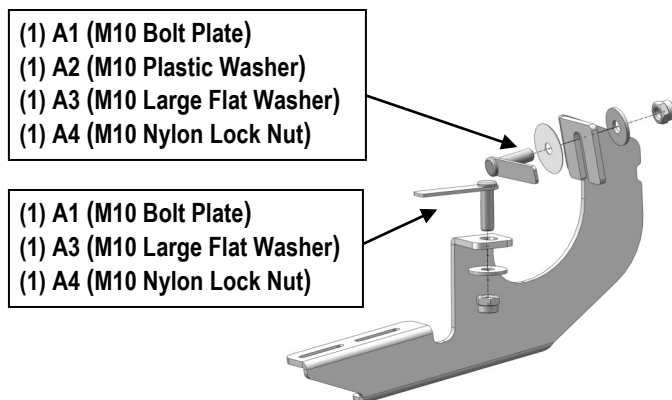
(Fig 5) Passenger Front Mounting Bracket Installation



(3) Repeat to Install the Passenger Center & Center 1 Mounting Brackets (**PCM & DRM**) (See Fig 6 & 7).



(Fig 6) Passenger Center Mounting Bracket (PCM) Installation



(Fig 7) Passenger Center 1 Mounting Bracket (DRM) Installation



STEP 5: Install Passenger Side Rear Mounting Bracket

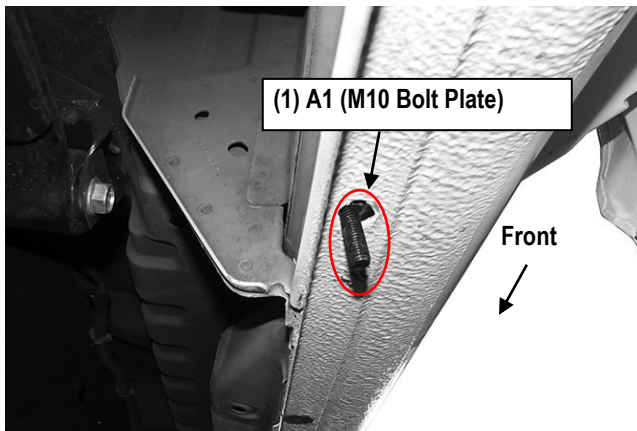
Insert (1) M10 Bolt Plate into the Passenger Side Rear Mounting holes. (See Fig 8) .

Attach the Assembled Passenger Rear Mounting Bracket (PRM+PRS) to the installed M10 Bolt Plate (See Fig 10) with:

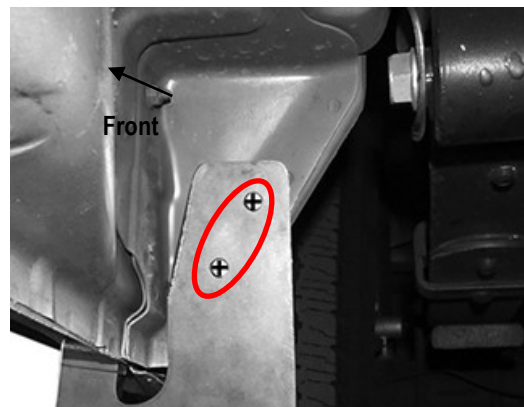
- (1) A1 (M10 Bolt Plate)
- (1) A3 (M10 Large Flat Washer)
- (1) A4 (M10 Nylon Lock Nut)

Line up the mounting plate on the Bracket with the front facing side of the inner body brace (Fig 9). **Refer to Step 7 for drilling holes. But don't drill at this time.**

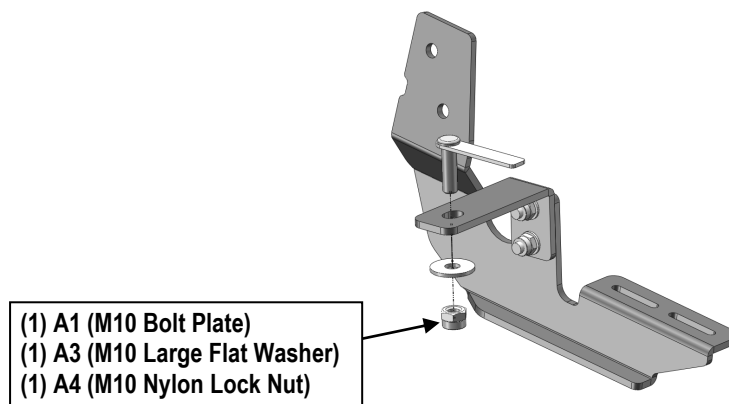
Note: Do not fully tighten hardware at this time.



(Fig 8) Passenger Side Rear Mounting Bracket Location



(Fig 9) Attach the Rear Mounting Bracket on the Brace



(Fig 10) Passenger Rear Mounting Bracket Installation



STEP 6: Passenger Side Running Board Installation

Slide (4) B1 (M6X1-20mm Square Head Bolts) into each bottom channel (Fig 11).

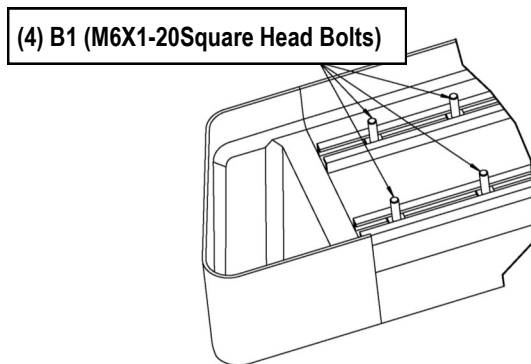
Carefully position the Running Board onto the (4) Mounting Brackets.

Attach the Running Board to each Mounting Brackets (Fig 12) with:

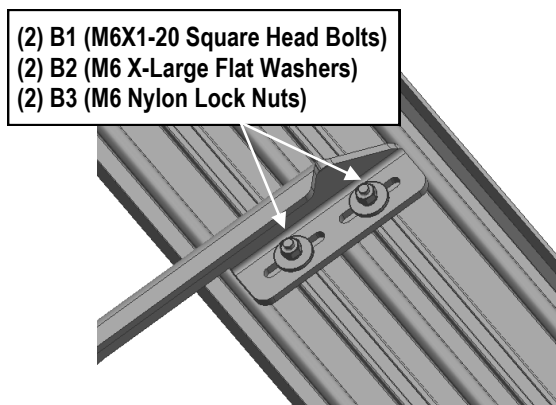
- (2) B1 (M6X1-20mm Square Head Bolts)
- (2) B2 (M6 X-Large Flat Washers)
- (2) B3 (M6 Nylon Lock Nuts)

IMPORTANT: Do not slide the Running Board on the Brackets or the bottom surface of the board will be damaged.

Level and adjust the Running Board, but don't fully tighten the brackets at this time. refer to step 7.



(Fig 11) Slide M6X1-20mm Square Head Bolts Into The Bottom Channels



(Fig 12) Running Board Installed Onto Mounting Bracket (Example)



STEP 7: Passenger Rear Mounting Bracket Final Installation

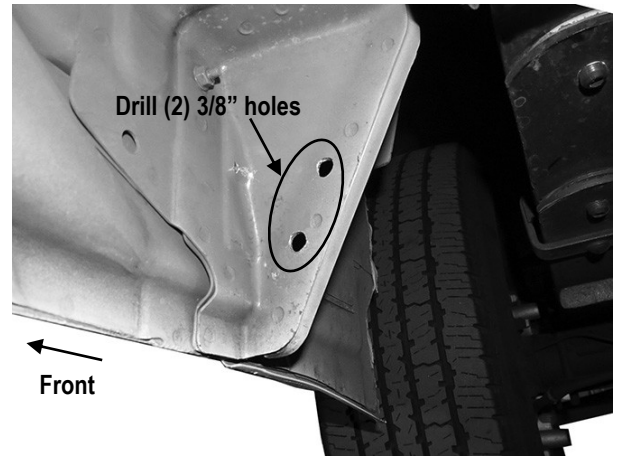
1. Back to the Passenger Rear Mounting Bracket (PRM).

(1) With the Running Board level, using the rear mounting bracket as a template, mark the hole locations on the inner body brace, (see Fig 9)

(2) Temporarily remove the Rear Bracket . Drill (2) 3/8" max holes through the marked locations. (See Fig 13).

2. Reinstall the Rear Bracket to the drilled holes and installed M10 Bolt Plate with (See Fig 14) :

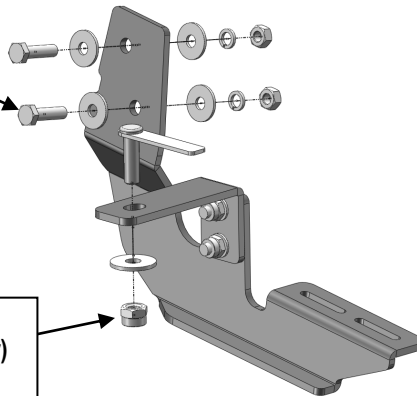
- (1) A1 (M10 Bolt Plate)
- (1) A3 (M10 Large Flat Washer)
- (1) A4 (M10 Nylon Lock Nut)
- (2) A5 (M8X1.25-30mm Hex Bolts)
- (4) A6 (M8 Large Flat Washers)
- (2) A7 (M8 Lock Washers)
- (2) A8 (M8 Hex Nuts)



(Fig 13) Drilled Holes on Passenger Side Rear Mounting Location

- (2) A5 (M8X1.25-30mm Hex Bolts)
- (4) A6 (M8 Large Flat Washers)
- (2) A7 (M8 Lock Washers)
- (2) A8 (M8 Hex Nuts)

- (1) A1 (M10 Bolt Plate)
- (1) A3 (M10 Large Flat Washer)
- (1) A4 (M10 Nylon Lock Nut)



(Fig 14) Passenger Rear Mounting Bracket Re-Installation



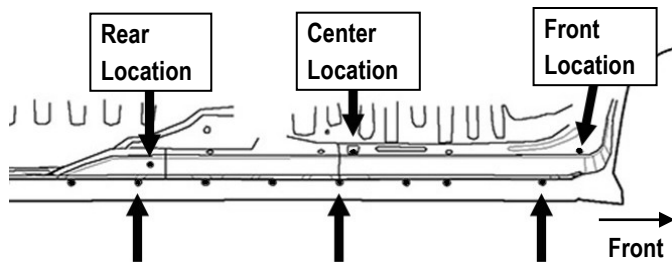
STEP 8: Passenger Side Step Bar Adjustment

- Level and adjust the assembled Step Bar properly.
- Tighten all 6mm hardware with 6-7 ft-lbs torque; all 8mm hardware with 16-17 ft-lbs torque; all 10mm hardware with 31-32 ft-lbs torque.

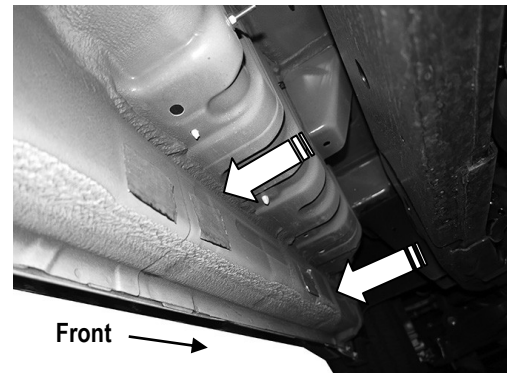
STEP 9: Driver Side Running Board Installation

- (1) Locate the factory mounting holes along the bottom of the pinch weld and body panel on driver side (**See Fig 15 & 16**)
- (2) Repeat Steps 1 & 4 to install the driver side (3) Mounting Brackets.
- (3) Repeat Steps 6&8 to install the Driver Side Running Board.

Installation Complete!!!



(Fig 15) Driver Side (3) Mounting Locations



(Fig 16) Driver Side Front & Center Mounting Locations

Attention

Do periodic inspections to the installation to make sure that all hardware is secure and tight.
In order to protect your bars/boards, please use mild soap/non-abrasive products for cleaning only.