



PART#: IB-P964Y&H

iBoard® Series

READ INSTRUCTIONS CAREFULLY BEFORE STARTING INSTALLATION. REMOVE CONTENTS FROM BOX AND VERIFY ALL PARTS ARE PRESENT. ASSISTANCE IS RECOMMENDED.

***ROCKER PANEL MOUNT
*DRILLING MAY BE REQUIRED ON SOME MODELS**

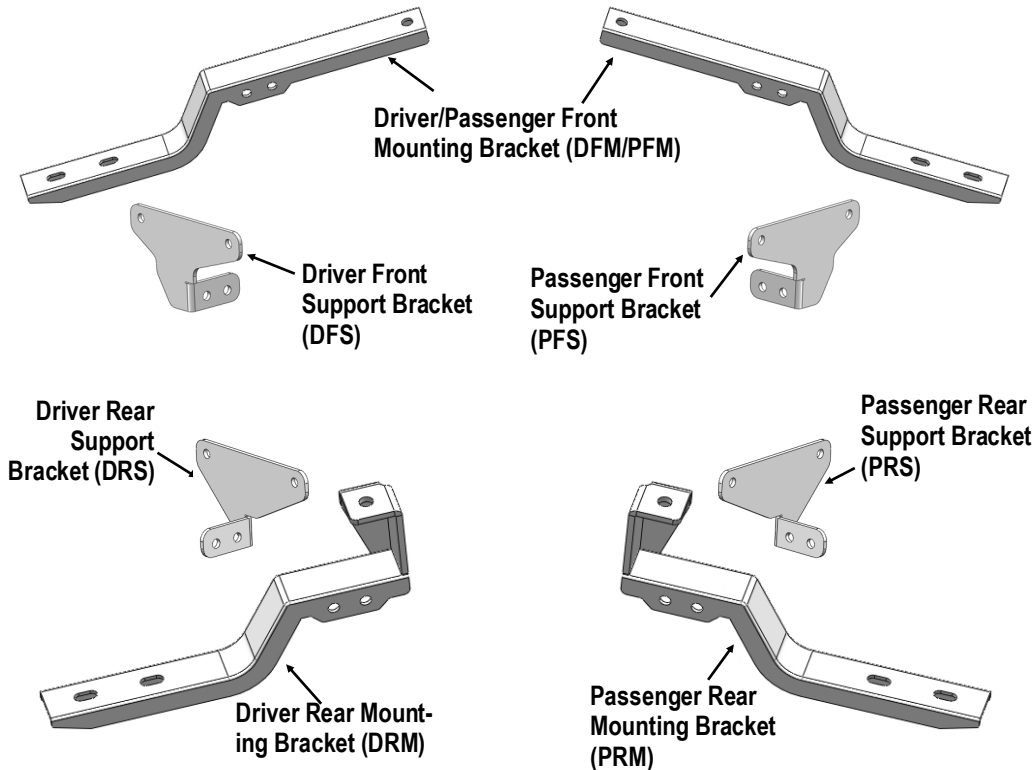
Fastener Size	Tightening Torque (ft-lbs)	Required
6mm	6-7	X
8mm	16-18	√
10mm	31-32	√
12mm	56-58	X
14mm	92-94	X

PART LIST

Driver Side Step Bar

Front
↑


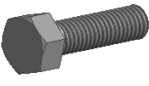


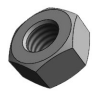
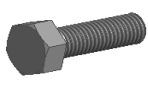


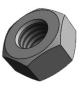
Passenger Side Step Bar



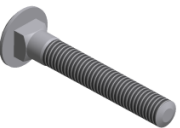





Scan for
Installation Video

Hardware Package A (For Bracket Installation)					
Item	QTY	Description	Item	QTY	Description
1#	2	M10X1.5 J-Bolts	6#	16	M8X1.25-20mm Hex Bolts
2#	2	M10X1.5-35mm Hex Bolts	7#	32	M8 Flat Washers
3#	4	M10 Large Flat Washers	8#	16	M8 Lock Washers
4#	4	M10 Lock Washers	9#	16	M8X1.25 Hex Nuts
5#	2	M10X1.5 Hex Nuts			

								
1 #	2 #	3 #	4 #	5 #	6 #	7 #	8 #	9 #

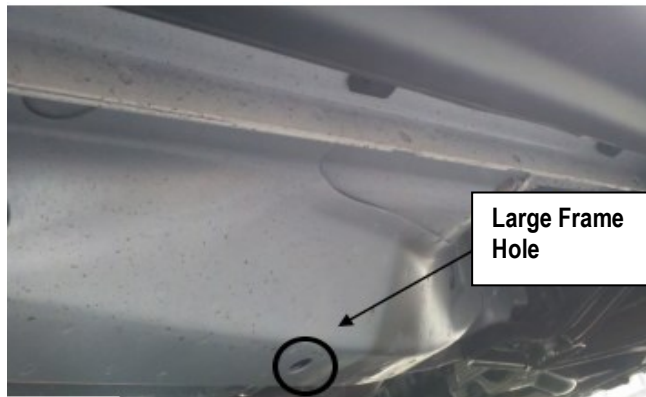
Hardware Package B (For Step Bar Installation)					
Item	QTY	Description	Item	QTY	Description
1#	8	M8X1.25-35mm Carriage Bolts	3#	8	M8 Nylon Lock Nuts
2#	8	M8 Large Flat Washers	4#	4	Sliders (Packed with Mounting Brackets)

			
1 #	2 #	3 #	4 #

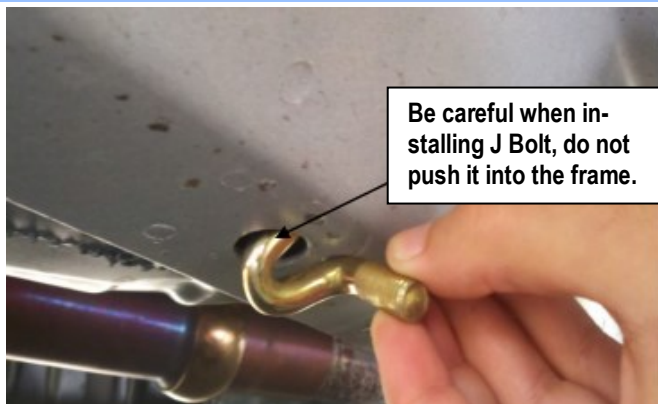


STEP 1

Start installation from the driver side front of the vehicle. Install M10 J-Bolt in the large hole on the frame on driver side front mounting location, (Figs 1 & 2).



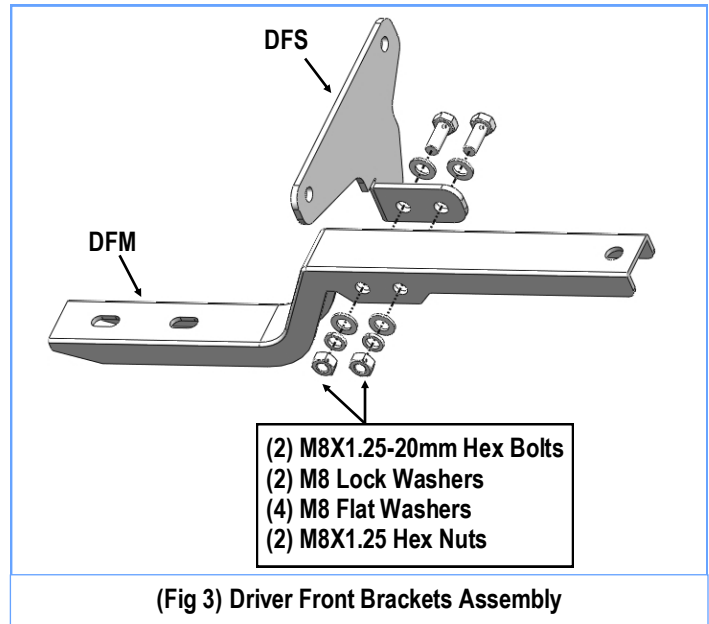
(Fig 1) Driver Side Front Mounting Location



(Fig 2) Install M10 J-Bolt
(On Driver Side Front Mounting Location)

STEP 2

Assemble Driver Front Mounting Bracket (DFM) and Driver Front Support Bracket (DFS) with (2) M8X1.25-20mm Hex Bolts, (4) M8 Flat Washers, (2) M8 Lock Washers and (2) M8X1.25 Hex Nuts, (Fig 3). Do not fully tighten at this time.

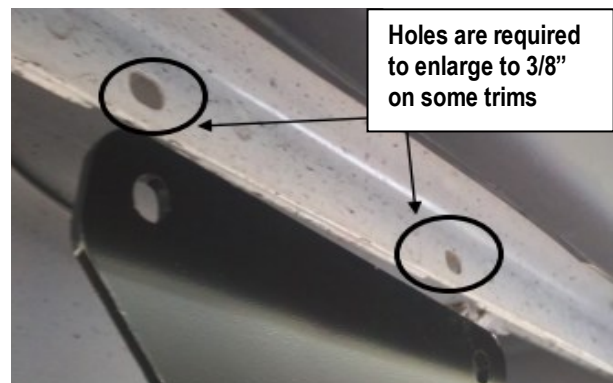


(Fig 3) Driver Front Brackets Assembly

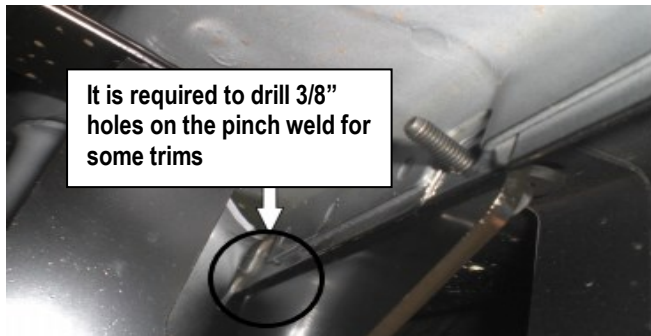
STEP 3

Drill (2) 3/8" holes on the pinch weld, according to the support bracket position, (Fig 5).

Note: Holes are required to enlarge to 3/8" on some trims, (Fig 4).



(Fig 4) Enlarge holes to 3/8"

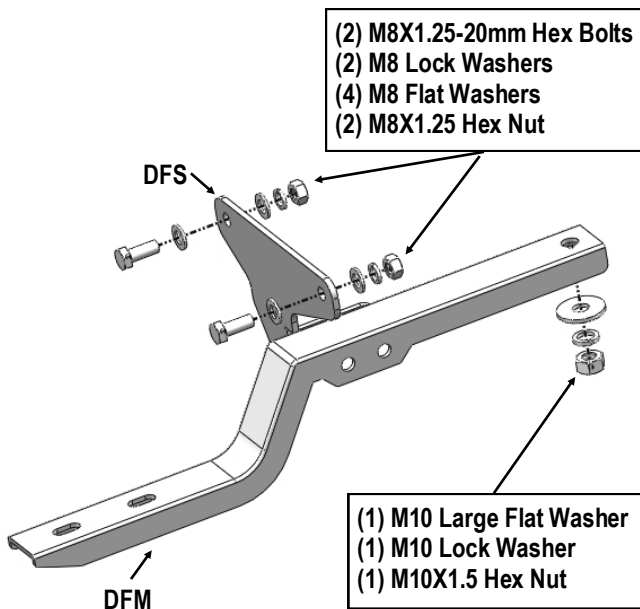


It is required to drill 3/8" holes on the pinch weld for some trims

(Fig 5) Drill Holes on Pinch Weld

STEP 4

Attach the Driver Front Mounting Bracket (DFM) to the installed M10 J-Bolt using (1) M10 Large Flat Washer, (1) M10 Lock Washer and (1) M10X1.5 Hex Nut. Attach the Driver Front Support Bracket (DFS) to the outside of the pinch weld, and secure the bracket to the drilled holes using (2) M8X1.25-20mm Hex Bolts, (4) M8 Flat Washers, (2) M8 Lock Washers and (2) M8X1.25 Hex Nuts, (Fig 6). Do not fully tighten at this time.



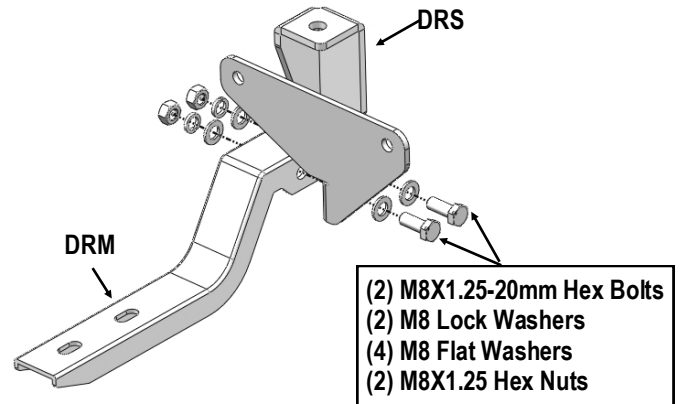
(2) M8X1.25-20mm Hex Bolts
(2) M8 Lock Washers
(4) M8 Flat Washers
(2) M8X1.25 Hex Nut

(1) M10 Large Flat Washer
(1) M10 Lock Washer
(1) M10X1.5 Hex Nut

(Fig 6) Driver Front Mounting Bracket Installation

STEP 5

Move along the side panel to the driver side rear mounting location, (Fig 3). Repeat step 2 for Driver Rear Mounting Bracket (DRM) and Driver Rear Support Bracket (DRS) assembly, (Fig 7).

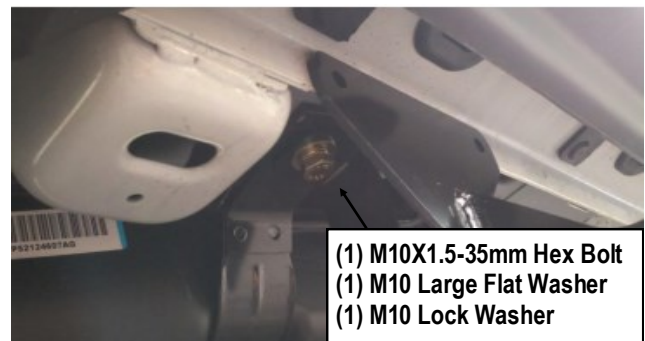


(2) M8X1.25-20mm Hex Bolts
(2) M8 Lock Washers
(4) M8 Flat Washers
(2) M8X1.25 Hex Nuts

(Fig 7) Driver Rear Brackets Assembly

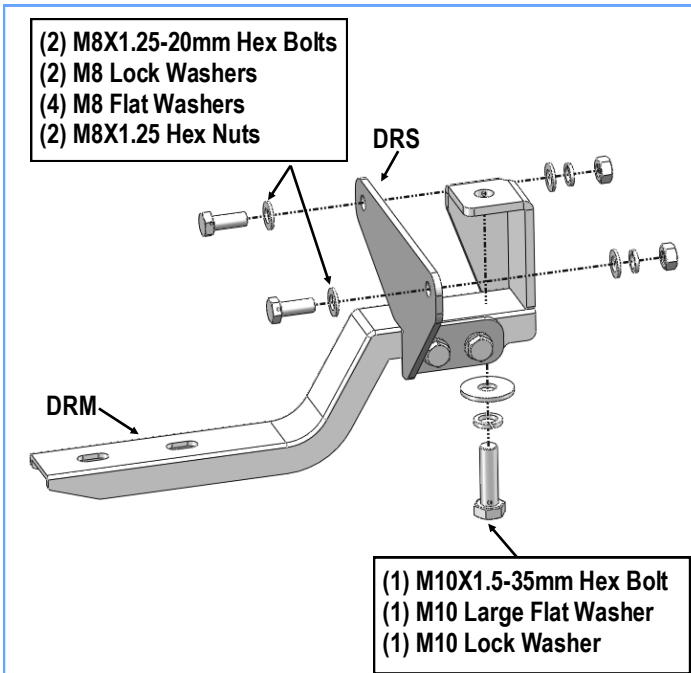
STEP 6

Remove the M10 fuel tank strap bolt and install the Driver Rear Mounting Bracket (DRM) with (1) M10X1.5-35mm Hex Bolt, (1) M10 Large Flat Washer and (1) M10 Lock Washer, (Fig 8). Secure the Driver Rear Support Bracket (DRS) to the outside of the pinch weld by using (2) M8X1.25-20mm Hex Bolts, (4) M8 Flat Washers, (2) M8 Lock Washers and (2) M8X1.25 Hex Nuts, (Fig 9). Do not fully tighten at this time.



(1) M10X1.5-35mm Hex Bolt
(1) M10 Large Flat Washer
(1) M10 Lock Washer

(Fig 8) Driver Rear Mounting Bracket Installed



(Fig 9) Driver Rear Brackets Installation

Attention

Do periodic inspections to the installation to make sure that all hardware is secure and tight.

In order to protect your bars/boards, please use mild soap/non-abrasive products for cleaning only.

STEP 7

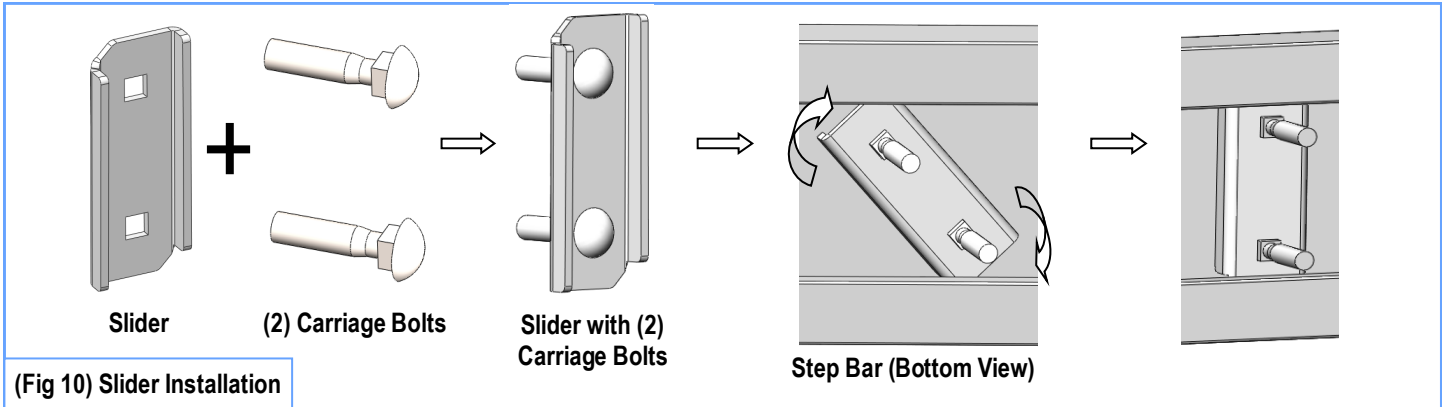
Once all (2) Driver side mounting brackets are installed, then proceed to the Step Bar installation. (Figs 10 & 11)

- (1) Select (1) Slider and (2) M8X1.25-35mm Carriage Bolts;
- (2) Install (2) M8X1.25-35mm Carriage Bolts in (1) Slider.
- (3) Slide the Slider (with carriage bolts) to the **Step Bar**.
- (4) Repeat to install the other (1) slider to the step bar.
- (5) Attach the Step Bar (with the Sliders) onto the installed mounting brackets. Position the Sliders to the installed brackets. Secure the Step Bar to the installed Brackets by using (4) M8 Large Flat Washers and (4) M8 Nylon Lock Nuts and (2) Sliders, (Fig 11). Do not fully tighten hardware at this time.

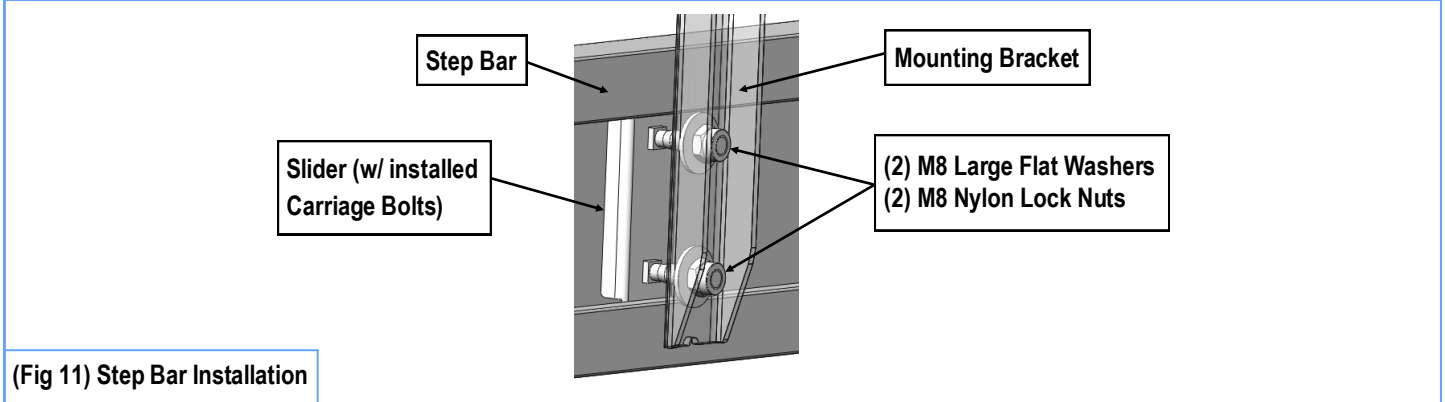
Note: The Sliders are packed with the Mounting Brackets.

Level and adjust the Step Bar and fully tighten all hardware.

Repeat **Steps 1-7** for the other side Step Bar installation. **The installation is completed!!!**



(Fig 10) Slider Installation



(Fig 11) Step Bar Installation