

iBoard®



Scan for
Installation Video

iBoard® by APS

PART#: IB-P115Y&H

READ INSTRUCTIONS CAREFULLY BEFORE STARTING INSTALLATION. REMOVE CONTENTS FROM BOX AND VERIFY ALL PARTS ARE PRESENT. ASSISTANCE IS RECOMMENDED.

*ROCKER PANEL MOUNT
*NO DRILLING REQUIRED

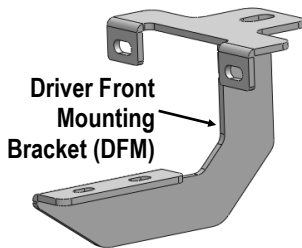
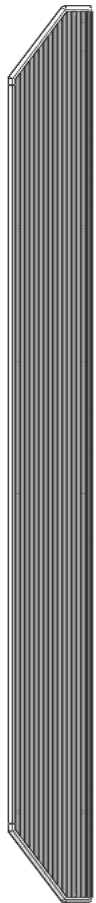
Fastener Size	Tightening Torque (ft-lbs)	Required
6mm	6-7	√
8mm	16-18	√
10mm	31-32	X
12mm	56-58	X
14mm	92-94	X

PART LIST

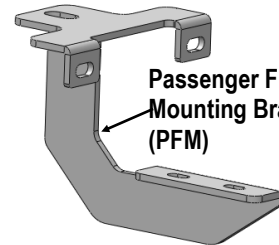
Driver Side Step Bar

Front
↑

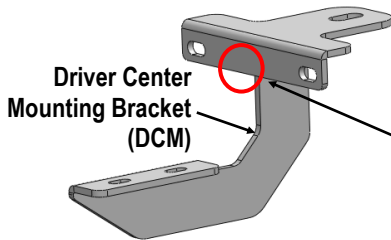
Passenger Side Step Bar



Driver Front Mounting Bracket (DFM)

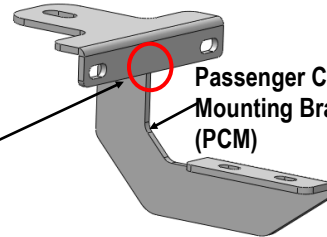


Passenger Front Mounting Bracket (PFM)

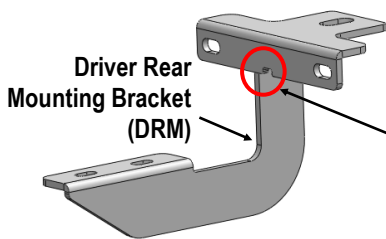


Driver Center Mounting Bracket (DCM)

Center Mounting Brackets W/O Notch

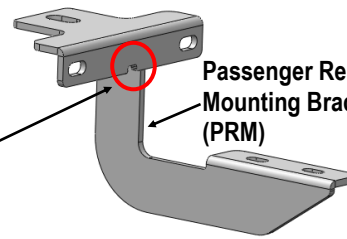


Passenger Center Mounting Bracket (PCM)

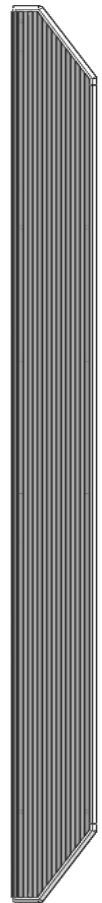


Driver Rear Mounting Bracket (DRM)

Rear Mounting Brackets W/ Notch



Passenger Rear Mounting Bracket (PRM)



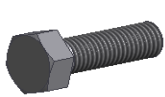
Customer Support: info@iboardauto.com



Scan for
Installation Video

Hardware Package A (For Bracket Installation)

Item	QTY	Description	Item	QTY	Description
1#	6	M8X1.25-35 Hex Bolts	4#	12	M6X1-25 Hex Bolts
2#	6	M8 Large Flat Washers	5#	24	M6 Large Flat Washers
3#	6	M8 Lock Washers	6#	12	M6X1 Nylon Lock Nuts



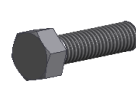
1 #



2 #



3 #



4 #



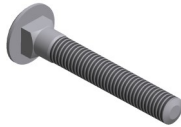
5 #



6 #

Hardware Package B (For Step Bar Installation)

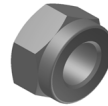
Item	QTY	Description	Item	QTY	Description
1#	12	M8X1.25-35mm Carriage Bolts	3#	12	M8 Nylon Lock Nuts
2#	12	M8 Large Flat Washers	4#	6	Sliders (Packed with Mounting Brackets)



1 #



2 #



3 #

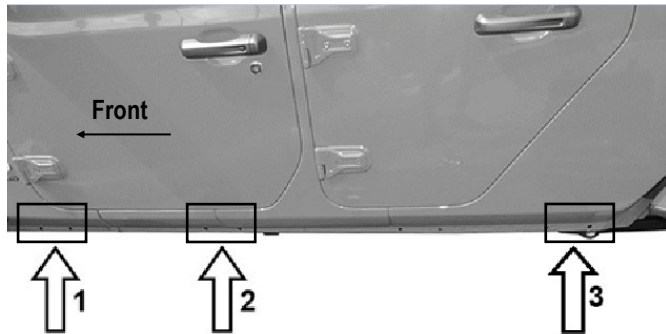


4 #



STEP 1

Start the installation under the driver side of the vehicle. Locate (3) mounting points on the vehicle, (Fig 1). Find the threaded insert located in between the first pair of holes along the pinch weld, (Fig 2).



(Fig 1) Driver Side (3) Mounting Locations

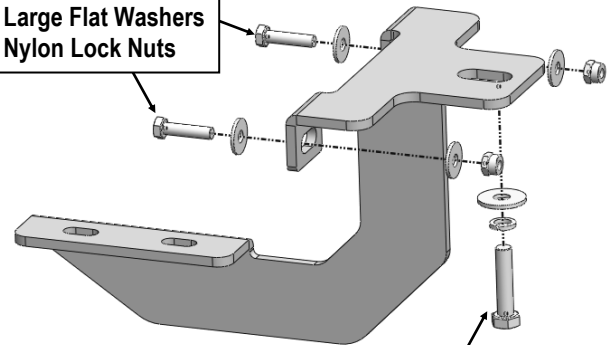
STEP 2

Start installing from the driver side front of the vehicle, (Fig 2). Attach the Driver Front Mounting Bracket to the vehicle with: (1) M8X1.25-35mm Hex Bolt, (1) M8 Lock Washer, (1) M8 Large Flat Washer, (2) M6X1-25mm Hex Bolts, (4) M6 Large Flat Washers and (2) M6 Nylon Lock Nuts, (Fig 3). Don't fully tighten the hardware at this time.



(Fig 2) Driver Side Front Mounting Location

(2) M6X1-25mm Hex Bolts
(4) M6 Large Flat Washers
(2) M6 Nylon Lock Nuts



(1) M8X1.25-35mm Hex Bolt
(1) M8 Lock Washer
(1) M8 Large Flat Washer

(Fig 3) Driver Front Mounting Bracket Installation

STEP 3

Move to driver side Center & Rear Mounting Locations, (Fig 1). Repeat **Step 2** to install Center & Rear brackets. Don't fully tighten the hardware at this time.

STEP 4

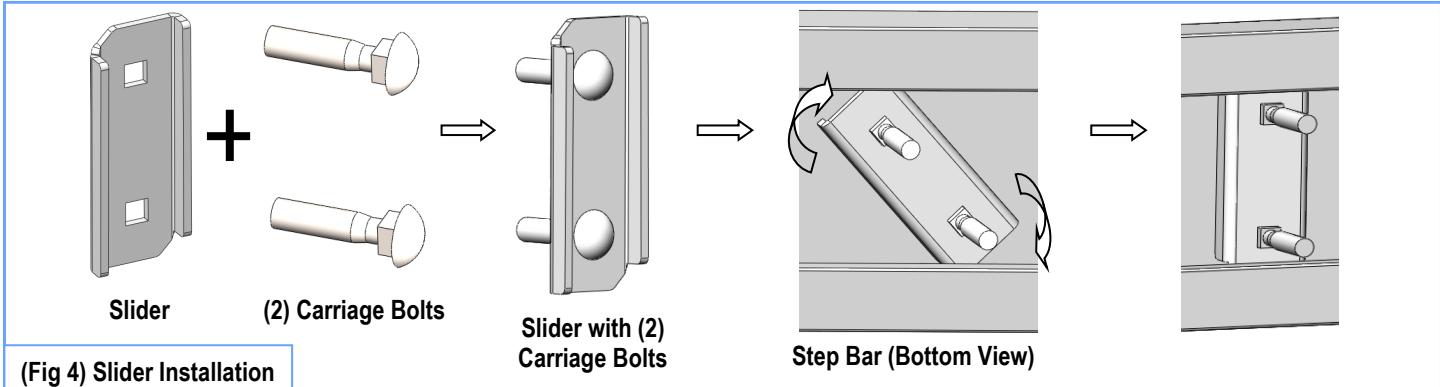
Once all (3) Driver side mounting brackets are installed, then proceed to the Step Bar installation. (Figs 4 & 5)

- (1) Select (1) Slider and (2) M8X1.25-35mm Carriage Bolts;
- (2) Install (2) M8X1.25-35mm Carriage Bolts in (1) Slider.
- (3) Slide the Slider (with carriage bolts) to the **Step Bar**.
- (4) Repeat to install the other (2) sliders to the step bar.
- (5) Attach the Step Bar (with the Sliders) onto the installed mounting brackets. Position the Sliders to the installed brackets. Secure the Step Bar to the installed Brackets by using (6) M8 Large Flat Washers and (6) M8 Nylon Lock Nuts and (3) Sliders, (Fig 5). Do not fully tighten hardware at this time.

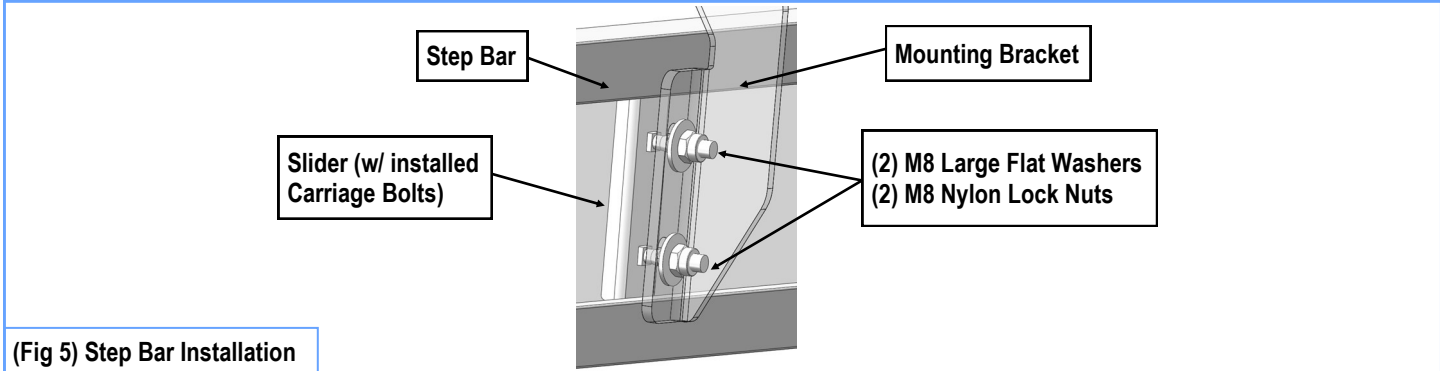
Note: The Sliders are packed with the Mounting Brackets. Level and adjust the Step Bar and fully tighten all hardware. Repeat **Steps 1-4** for the other side Step Bar installation. **The installation is completed!!!**



Scan for
Installation Video



(Fig 4) Slider Installation



(Fig 5) Step Bar Installation