



## iBoard® Series

# INSTALLATION INSTRUCTIONS

**PART#: IB-R970**

### BEFORE INSTALLATION

REMOVE CONTENTS FROM BOX. VERIFY ALL PARTS ARE PRESENT. READ INSTRUCTIONS CAREFULLY BEFORE STARTING INSTALLATION. ASSISTANCE IS RECOMMENDED. THANK YOU FOR CHOOSING OUR PRODUCT!

These instructions are provided for reference only. We strongly recommend installation by a professional installer for the best results. We are not responsible for any damage caused during installation.

\* **ROCKER PANEL MOUNT**

\* **NO DRILLING REQUIRED**

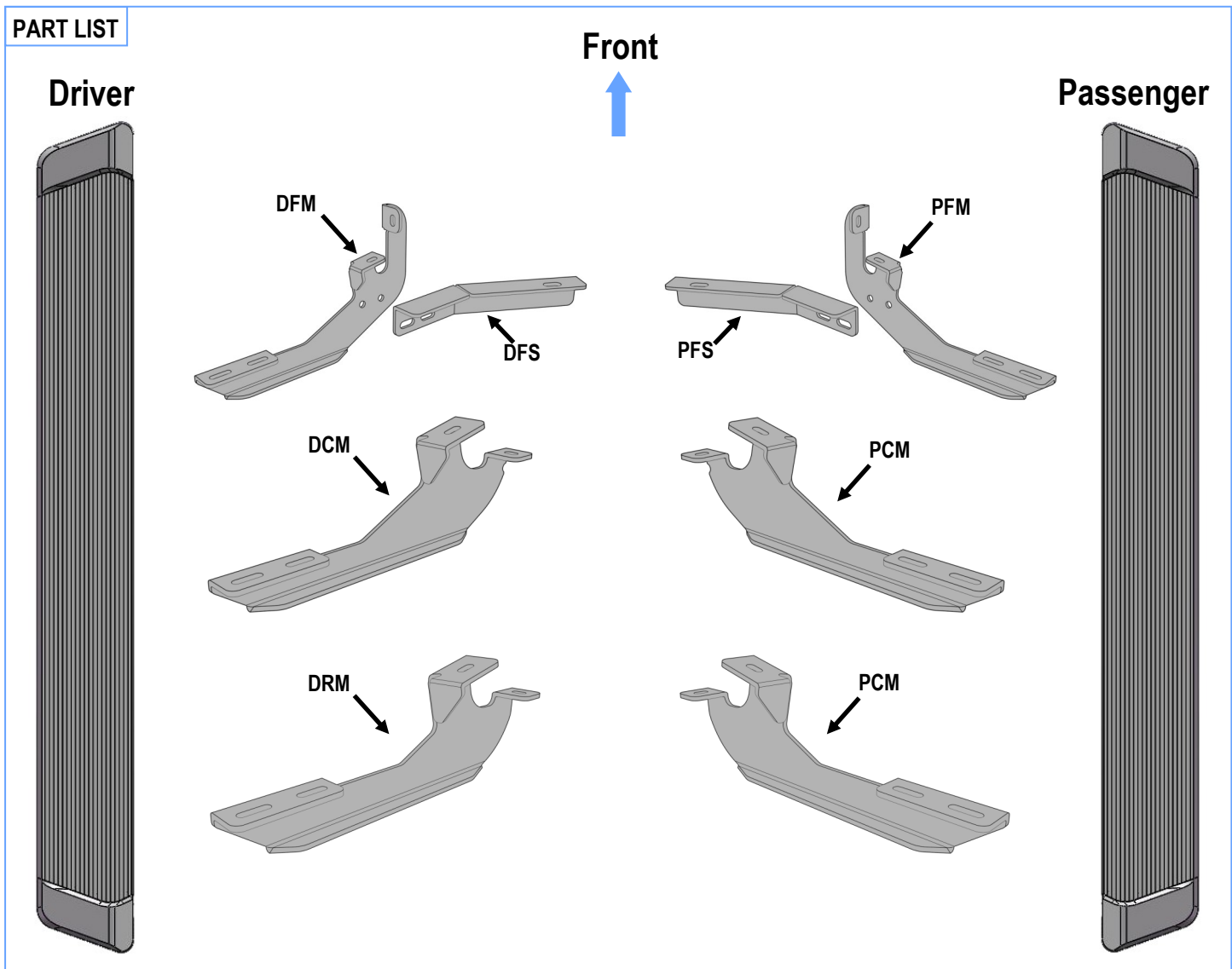
### Torque Value

Fastener Size	Tightening Torque (ft-lbs)	Required
6mm	6-7	√
8mm	16-18	√
10mm	31-32	√
12mm	56-58	X
14mm	92-94	X



Mounting Bracket List							
Item	QTY	Bracket Label	Description	Item	QTY	Bracket Label	Description
1#	1	DFM	Mounting Bracket for Driver Front	5#	1	PFM	Mounting Bracket for Passenger Front
2#	1	DCM	Mounting Bracket for Driver Center	6#	1	PCM	Mounting Bracket for Passenger Center
3#	1	DRM	Mounting Bracket for Driver Rear	7#	1	PRM	Mounting Bracket for Passenger Rear
4#	1	DFS	Support Bracket for Driver Front	8#	1	PFS	Support Bracket for Passenger Front

## PART LIST



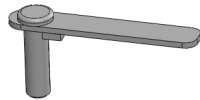


## Hardware Package A (For Bracket Installation)

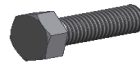
Item	QTY	Description	Item	QTY	Description
A1	1	M8 Rivet Insert Installation Tool	A7	4	M8 Hex Nuts
A2	2	M10X35 Bolt Plates	A8	2	M8 Rivet Nuts
A3	4	M8X1.25-35mm Hex Bolts	A9	2	M10 Large Flat Washers
A4	12	M8X1.25-25mm Hex Bolts	A10	2	M10 Lock Washers
A5	20	M8 Large Flat Washers	A11	2	M10 Hex Nuts
A6	16	M8 Lock Washers			



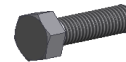
A1



A2



A3



A4



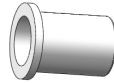
A5



A6



A7



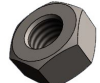
A8



A9



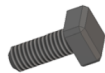
A10



A11

## Hardware Package B (For Step Bar Installation)

Item	QTY	Description	Item	QTY	Description
B1	12	M6X1-20mm Square Head Bolts	B3	12	M6 Nylon Lock Nuts
B2	12	M6 Large Flat Washers			



B1



B2

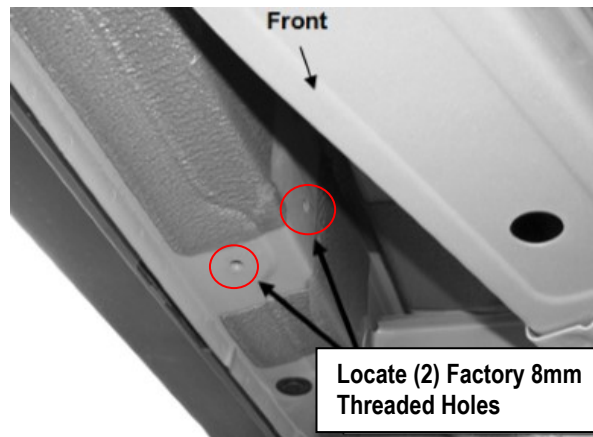


B3

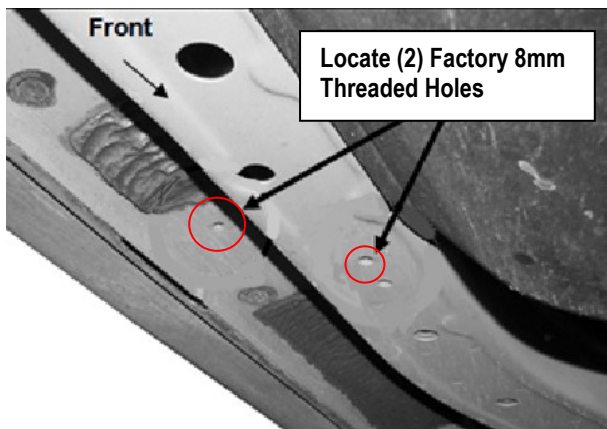


## STEP 1: Locate the Driver Side Mounting Position

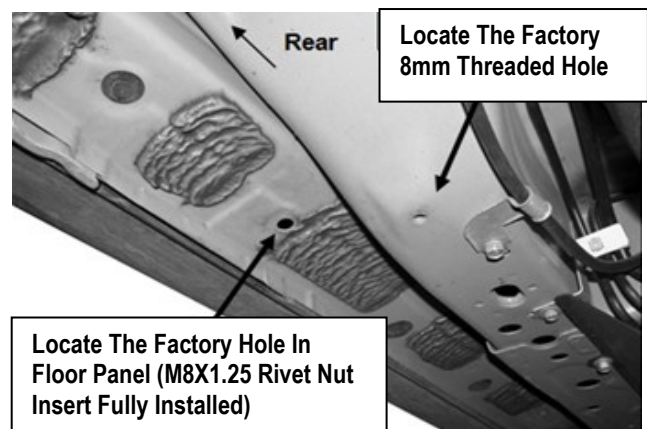
- Locate the (2) factory 8mm threaded holes, one located at the bottom of the floor panel and the other one on the inner side of body panel (See Figs 1-3).
- All factory threaded holes may be covered with rubber plugs or undercoating. Remove the rubber plugs and the undercoating from mounting surfaces carefully.



(Fig 1) Driver Side Front Mounting Location



(Fig 2) Driver Side Center Mounting Location



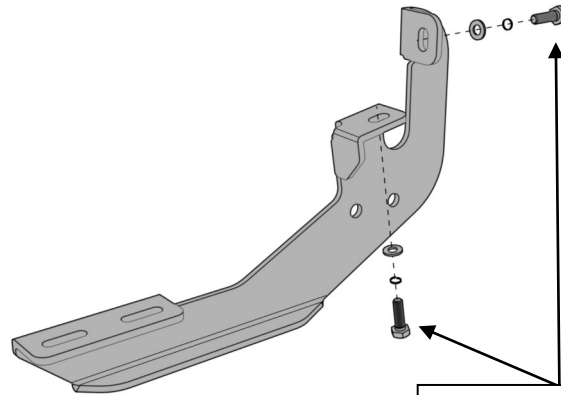
(Fig 3) Driver Side Rear Mounting Location



## STEP 2: Install Driver Front Mounting Bracket

- Start installing from Driver Side Front Mounting Position (See **Fig 1**).
- Attach the Driver Front Mounting Bracket (**DFM**) to the two 8mm threaded holes (**Fig 3**) with:
  - \*. (2) A4 (M8X1.25-25mm Hex Bolts)
  - \*. (2) A6 (M8 Lock Washers)
  - \*. (2) A5 (M8 Large Flat Washers)

**Note:** Do not fully tighten hardware at this time.

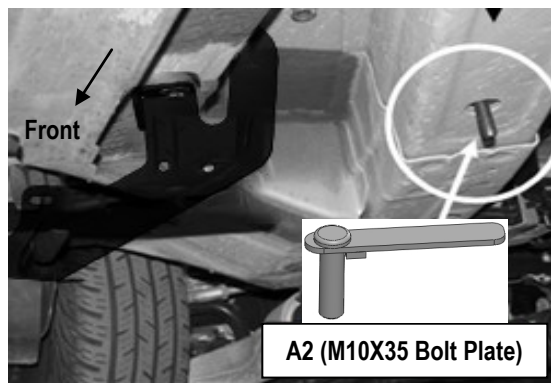


(2) A4 (M8X1.25-25mm Hex Bolts)  
(2) A6 (M8 Lock Washers)  
(2) A5 (M8 Large Flat Washers)

(Fig 4) Driver Front Mounting Bracket Installation

## STEP 3: Locate Driver Front Support Bracket Mounting Location

- Locate the Driver Front Support Mounting Position at the bottom of the frame channel (**Fig 5**). Insert (1) A2 (M10X35 Bolt Plate) into the factory hole (**Fig 5**). Rotate the Bolt Plate clock-wise 90-degree or until it stops turning.
- To determine the correct mounting hole on the frame channel, suggest line up the Driver Front Support Bracket (**DFS**) to the (2) holes on the Driver Front Mounting Bracket (**DFM**) and lined up the other end of the support bracket with the hole at the bottom of the frame channel (See **Fig 4**).



(Fig 5) Driver Front Support Bracket Mounting Location



## STEP 4: Install The Driver Front Support Bracket

(1) Attach the Driver Front Support Bracket (DFS) to the Installed Driver Front Mounting Bracket (DFM) (Fig 6) with:

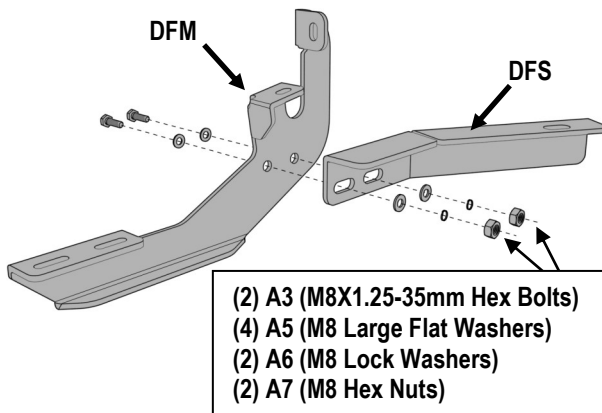
- (2) A3 (M8X1.25-35mm Hex Bolts)
- (4) A5 (M8 Large Flat Washers)
- (2) A6 (M8 Lock Washers)
- (2) A7 (M8 Hex Nuts)

**Note: Do not fully tighten hardware at this time.**

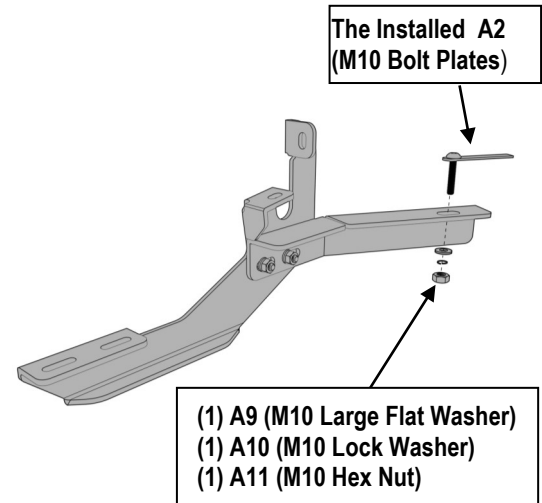
(2) And then bolt the other end of the Driver Front Support Bracket (DFS) to the installed M10X35 Bolt Plate (Fig 7) with:

- (1) A9 (M10 Large Flat Washer)
- (1) A10 (M10 Lock Washer)
- (1) A11 (M10 Hex Nut)

**Note: Do not fully tighten hardware at this time.**



(Fig 6) Driver Front Support Bracket Assembly



(Fig 7) Driver Front Support Bracket Installation

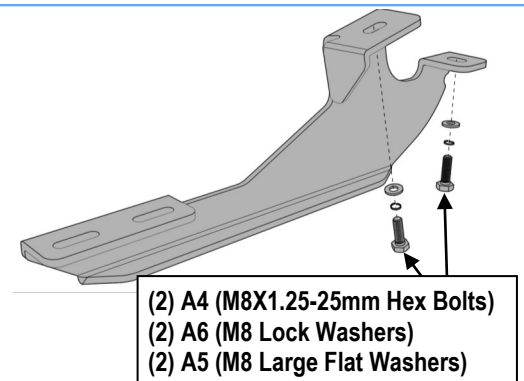
## STEP 5: Install The Driver Center Mounting Bracket

(1) Move to the Driver Side Center Mounting Location, locate the (2) 8mm threaded holes at the bottom of the floor panel and the frame channel, (See Fig 2).

(2) Attach the Driver Center Mounting Bracket (DCM) to the (2) threaded holes (Fig 8) with:

- (2) A4 (M8X1.25 -25mm Hex Bolts)
- (2) A6 (M8 Lock Washers)
- (2) A5 (M8 Large Flat Washers)

**Note: Do not fully tighten hardware at this time.**



(Fig 8) Driver Center Mounting Bracket Installation



## STEP 6: Install The Driver Rear Mounting Bracket

- (1) Move to the Driver Side Rear Mounting location (See Fig 3).
  - Locate the 8mm threaded hole at the bottom of the frame channel and the hole on the floor panel.
  - Suggest hold the Driver Rear Mounting Bracket (DRM) up to the mounting position to identify the correct factory threaded holes for mounting on the frame.
- (2) Assemble the (1)A1 (M8 Rivet Insert Installation Tool), (1) A8 (M8 Rivet Nut), (1) A5 (M8 Large Flat Washer) and (1) A4 (M8X1.25 -25mm Hex Bolt), (Fig 9).
- (3) Insert the A8 (M8 Rivet Nut) into the factory hex hole on floor panel. Firmly hold the tool handle up against the floor panel, and then tighten the (M8X1.25-25mm Hex Bolt) with the wrench until the Rivet Nut is fully expanded in the hole, (Fig 11).

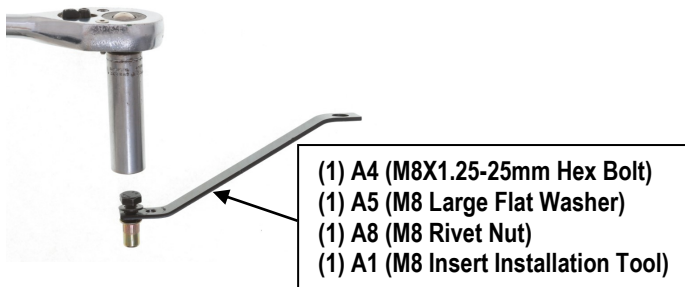
**Note:** Use the 8mm hole on M8 Rivet Insert Installation Tool to install the M8 Rivet Nut (Fig 10).

**Note:** \*. Do not over tighten or a pull out may occur.

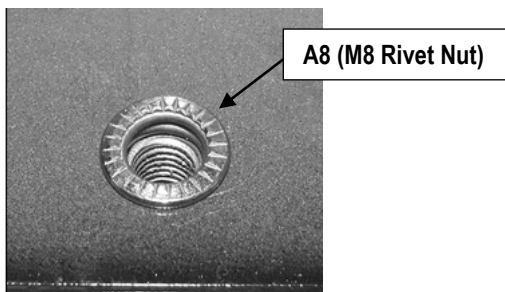
\*. Once the M8 Rivet Insert is fully compressed, remove the bolt and tool from the Insert.

- (4) Attach the Driver Rear Mounting Bracket (DRM) to the factory 8mm threaded hole on the frame channel and the installed M8 Rivet Nut (Fig 12) on the floor panel with:
  - (2) A4 (M8X1.25 -25 Hex Bolts)
  - (2) A6 (M8 Lock Washers)
  - (2) A5 (M8 Large Flat Washers)

**Note:** Do not fully tighten hardware at this time



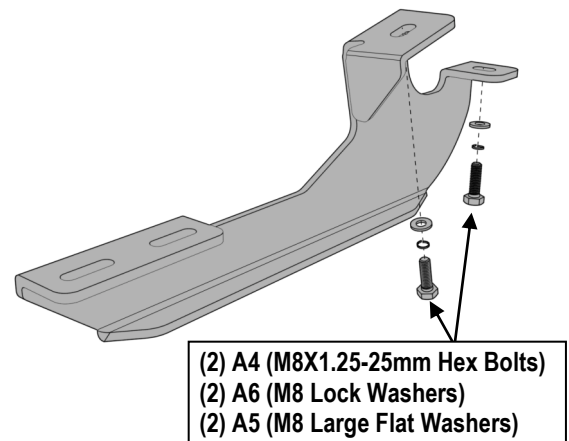
(Fig 9) M8 Rivet Nut Installation Tool Assembly



(Fig 11) Tighten Hex Bolt To Collapse And Lock Rivet Nut Into Factory Hole



(Fig 10) M8 Rivet Insert Installation Tool



(Fig 12) Driver Rear Mounting Bracket Installation





## STEP 7: Driver Running Board Installation

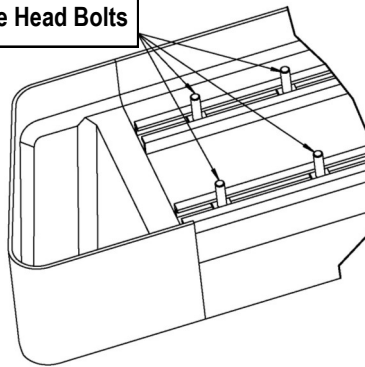
Once all (3) mounting brackets are installed, then proceed to the Running Board installation.

- (1) Select a Running Board. Slide (3) B1 M6X1-20mm Square Head Bolts into each bottom channel (**Fig 13**).
- (2) Carefully position the Running Board onto the (3) Mounting Brackets.
- (3) Attach the Running Board to each Mounting Bracket (**Fig 14**) with
  - (2) B1 (M6X1-20mm Square Head Bolts)
  - (2) B2 (M6 Large Flat Washers)
  - (2) B3 (M6 Nylon Lock Nuts )

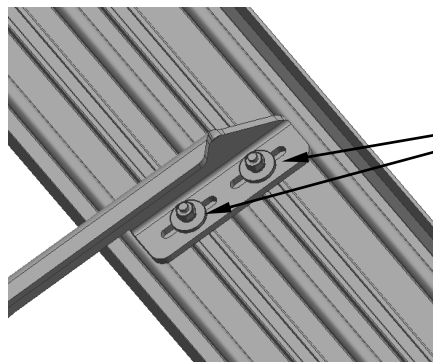
**Note: Do not fully tighten hardware at this time**

**Do not slide the Running Board on the Brackets or the bottom surface of the board will be damaged.**

M6X1-20mm Square Head Bolts



(Fig 13) Slip M6X1-20mm Square Head Bolts Into The Bottom Channels



(2) B1 (M6X1-20mm Square Head Bolts)  
(2) B2 (M6 Large Flat Washers)  
(2) B3 (M6 Nylon Lock Nuts)

(Fig 14) Running Board Installed Onto Mounting Bracket





## STEP 8: Driver Side Step Bar Adjustment

- Level and adjust the Step Bar properly.
- Tighten all 6mm hardware with 6-7 ft-lbs torque , 8mm hardware with 16-18 ft-lbs torque and 10mm hardware with 31-32 ft-lbs torque.

## STEP 9: The Other Side Step Bar Installation

Move to the other side of the vehicle. Repeat **Steps 1-8** for the other side step bar installation.

### Attention

Do periodic inspections to the installation to make sure that all hardware is secure and tight.  
In order to protect your bars/boards, please use mild soap/non-abrasive products for cleaning only.