



iBoard® by APS

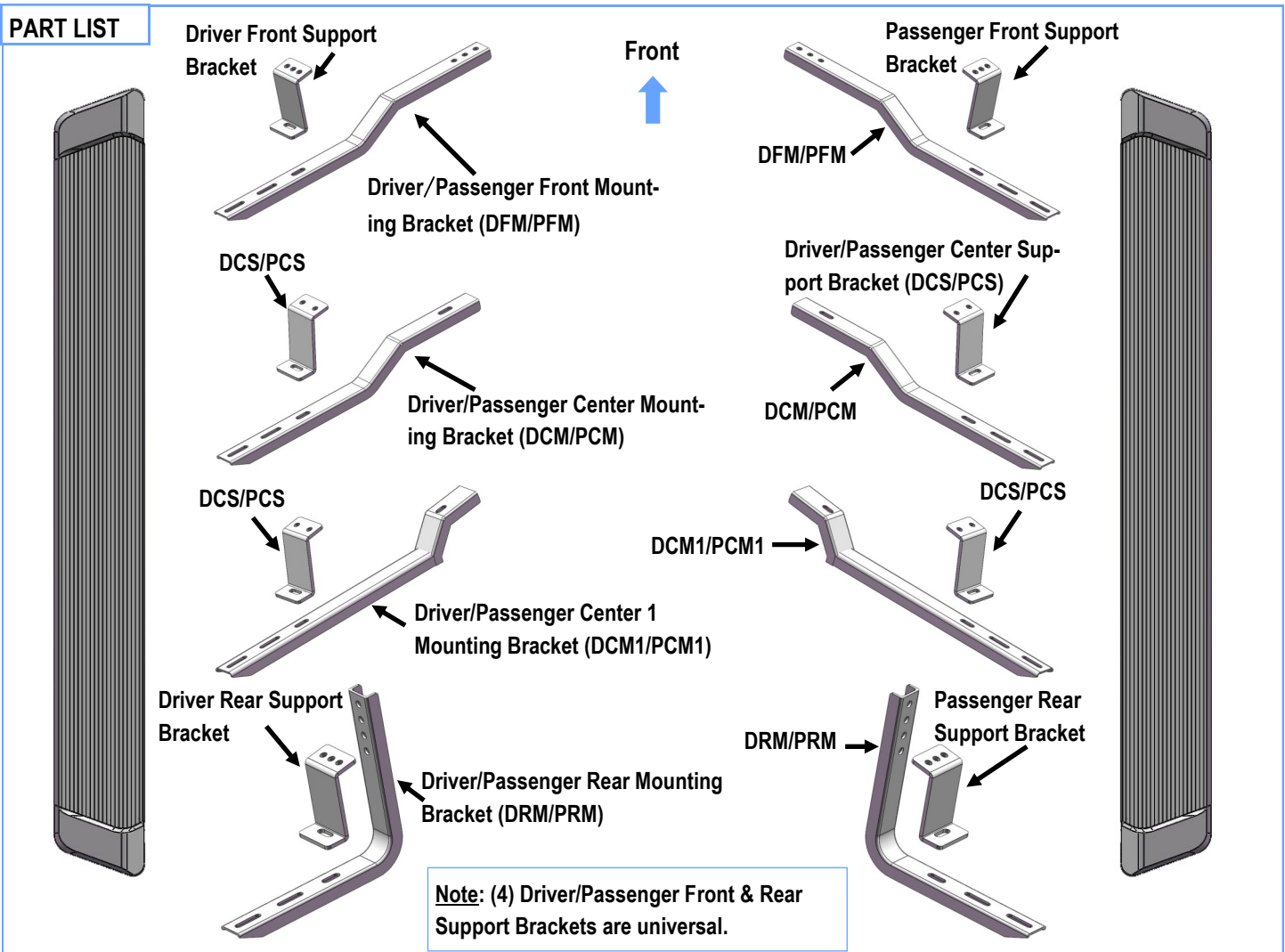
PART#: IB-R941

READ INSTRUCTIONS CAREFULLY BEFORE STARTING INSTALLATION. REMOVE CONTENTS FROM BOX AND VERIFY ALL PARTS ARE PRESENT. ASSISTANCE IS RECOMMENDED.

*ROCKER PANEL MOUNT
*DRILLING MAY BE REQUIRED

Fastener Size	Tightening Torque (ft-lbs)	Required
6mm	6-7	√
8mm	16-18	√
10mm	31-32	X
12mm	56-58	X
14mm	92-94	X

PART LIST





Hardware Package A (For Bracket Installation)

Item	QTY	Description	Item	QTY	Description
1#	20	M8X1.25-20mm Hex Bolts	3#	8	M8 Nylon Lock Nuts
2#	28	M8 Flat Washers	4#	18	ST6.3-25mm Hex Self Tapping Screws



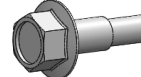
1#



2#



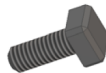
3#



4#

Hardware Package B (For Step Bar Installation)

Item	QTY	Description	Item	QTY	Description
1#	16	M6X1-20mm Square Head Bolts	3#	16	M6 Nylon Lock Nuts
2#	16	M6 Large Flat Washers			



1#



2#



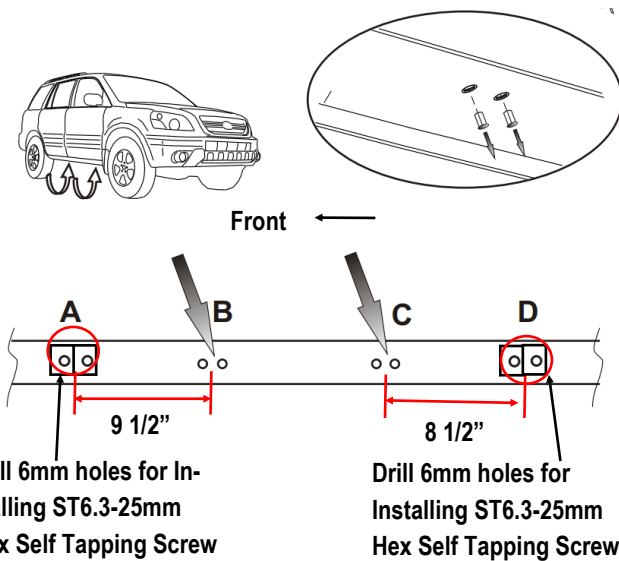
3#



STEP 1

Start installation at the passenger side of the vehicle, (Fig 1). Mounting Brackets will bolt to the A,B,C,D mounting locations on pinch weld, (Fig 1).

Note: Drilling may be required on mounting location A & D on some trims.



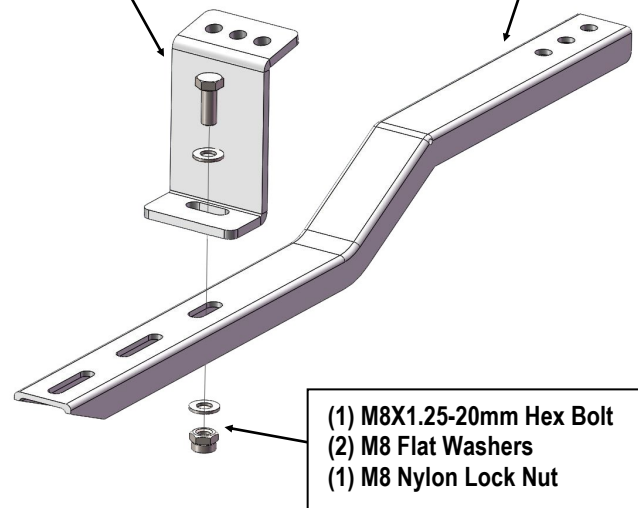
(Fig 1) Passenger Side Mounting Locations

STEP 2

Assemble Passenger Front Mounting Bracket (DFM/PFM) with Passenger Front Support Bracket using (1) M8X1.25-20mm Hex Bolt, (2) M8 Flat Washers and (1) M8 X1.25 Nylon Lock Nut, as shown (Fig 2). Do not fully tighten at this time.

Passenger Front
Support Bracket

DFM/PFM



(Fig 2) Passenger Front Mounting Bracket Assembly

STEP 3

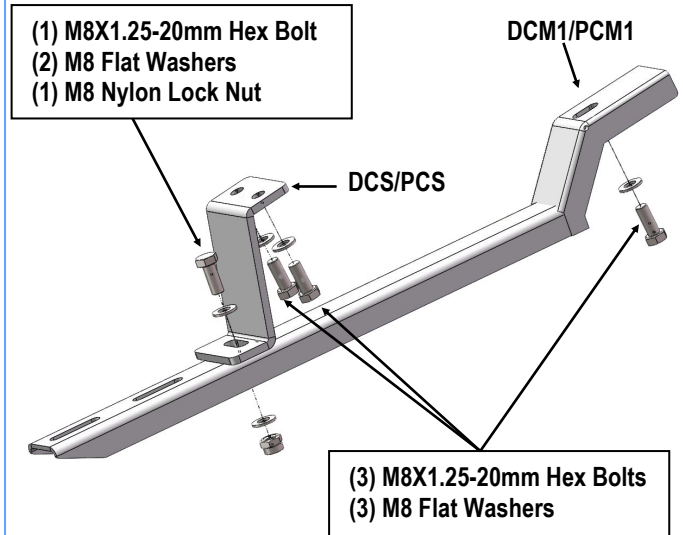
Attach the assembled Passenger Front Brackets to Mounting Location A (see Fig 1) on vehicle with (4) ST6.3-25mm Hex Self Tapping Screws, (Fig 3). Do not fully tighten at this time.

Note: Drilling may be required on rocker panel and pinch weld for installing (4) ST6.3-25mm Hex Self Tapping Screws on some models or trims.



STEP 5

Repeat **Step 4** to install Passenger Center 1 Mounting Bracket (**DCM1/PCM1**) and Passenger Center Support Bracket (**DCS/PCS**) to location **C** (See **Fig 1 & 5**). Do not fully tighten at this time.



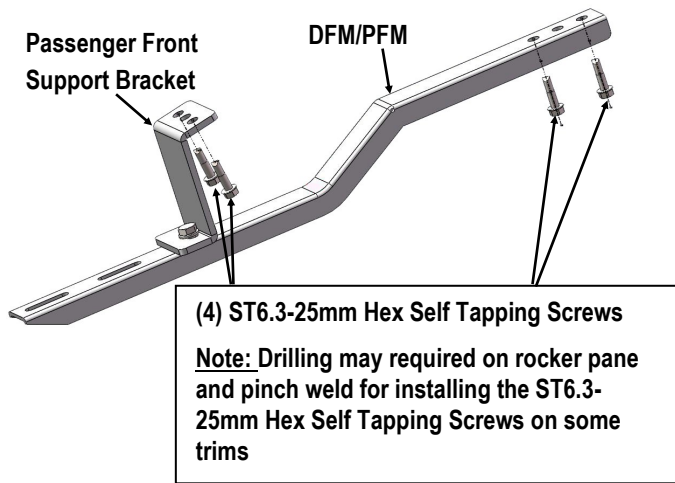
(Fig 5) Passenger Side Center 1 Brackets Installed

STEP 6

Assemble Passenger Rear Support Bracket and Passenger Rear Mounting Bracket (**DRM/PRM**) using (1) M8X1.25-20mm Hex Bolt, (2) M8 Flat Washers and (1) M8 Nylon Lock Nut.

Attach the assembled Passenger Rear Brackets to mounting location **D** (See **Fig 1**) on vehicle with (5) ST6.3-25mm Hex Self Tapping Screws, (**Fig 6**). Do not fully tighten at this time.

Note: Drilling may be required on rocker panel and pinch weld for installing (5) ST6.3-25mm Hex Self Tapping Screws on some models or trims.

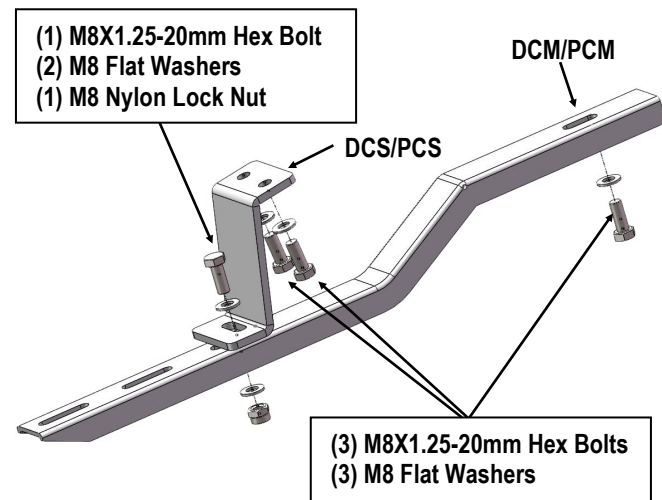


(Fig 3) Passenger Side Front Brackets Installed

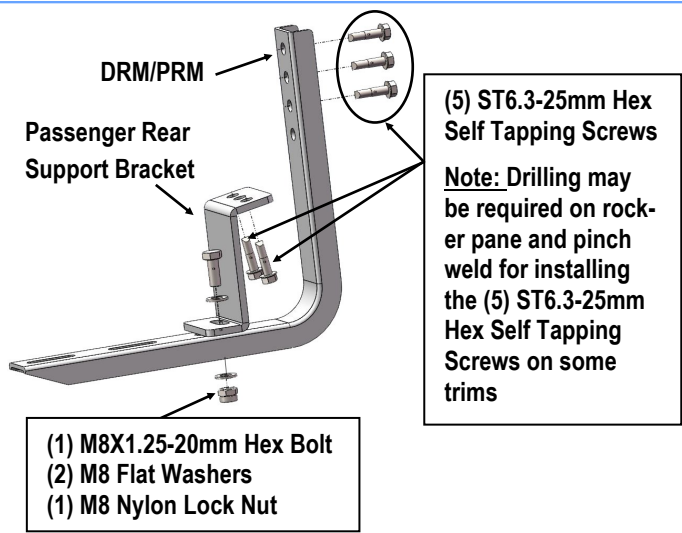
STEP 4

Assemble Passenger Center Mounting Bracket (**DCM/PCM**) and Passenger Center Support Bracket (**DCS/PCS**) using (1) M8X1.25-20mm Hex Bolt, (2) M8 Flat Washers and (1) M8X1.25 Nylon Lock Nut.

Attach the assembled Passenger Center Brackets to location **B** (See **Fig 1**) on vehicle with (3) M8X1.25-20mm Hex Bolts and (3) M8 Flat Washers (**Fig 4**). Do not fully tighten at this time.



(Fig 4) Passenger Side Center Brackets Installed



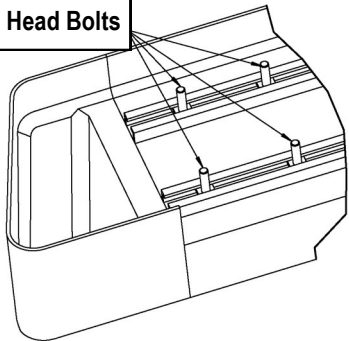
(Fig 6) Passenger Side Rear Brackets Installed

STEP 7

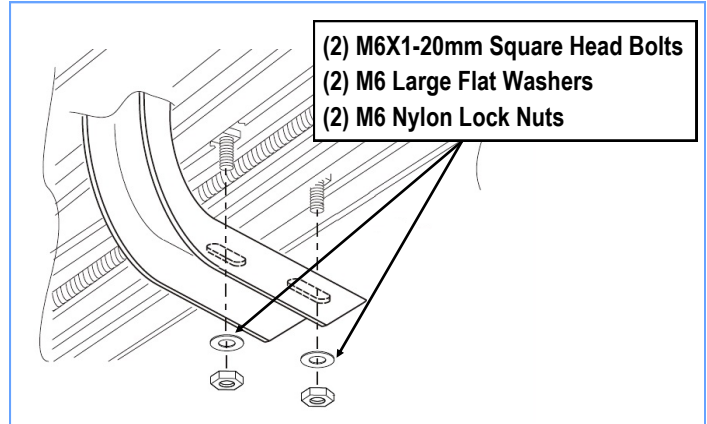
Once all (4) mounting brackets are installed. Select a Running Board. Slip (4) M6X1-20mm Square Head Bolts into each bottom channel (Fig 7). Carefully position the Running Board onto the (4) Mounting Brackets. Attach the Running Board to each Mounting Bracket with (2) M6X1-20mm Square Head Bolts, (2) M6 Large Flat Washers and (2) M6 Nylon Lock Nuts (Fig 8). Do not fully tighten at this time.

IMPORTANT: Do not slide the Running Board on the Brackets or the bottom surface of the board will be damaged.

M6X1-20mm Square Head Bolts



(Fig 7) Slip (4) M6X1-20mm Square Head Bolts Into Each Bottom Channel



(Fig 8) Running Board Installed Onto Mounting Bracket

STEP 8

Level and adjust the Running Board and fully tighten all hardware.

Important: Please follow the recommended Tightening Torques shown in the table on page 1. Don't over tighten, or the nuts/bolts will be damaged.

STEP 9

Repeat **Steps 1-8** for the other side Running Board installation. The installation is completed.

Attention

Do periodic inspections to the installation to make sure that all hardware is secure and tight.

In order to protect your bars/boards, please use mild soap/non-abrasive products for cleaning only.