

iBoard®



Scan for
Installation Video

iBoard® by APS

PART#: IB-P352Y&H

READ INSTRUCTIONS CAREFULLY BEFORE STARTING INSTALLATION. REMOVE CONTENTS FROM BOX AND VERIFY ALL PARTS ARE PRESENT. ASSISTANCE IS RECOMMENDED.

*ROCKER PANEL MOUNT
*NO DRILLING REQUIRED

| Fastener Size | Tightening Torque (ft-lbs) | Required |
|---------------|----------------------------|----------|
| 6mm | 6-7 | X |
| 8mm | 16-18 | √ |
| 10mm | 31-32 | X |
| 12mm | 56-58 | X |
| 14mm | 92-94 | X |

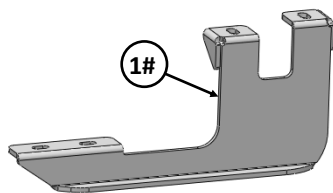
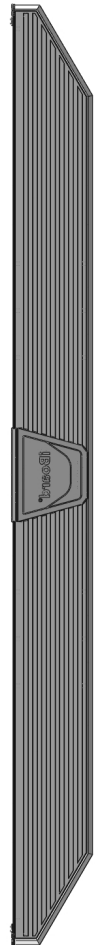
PART LIST

Driver Side Step Bar

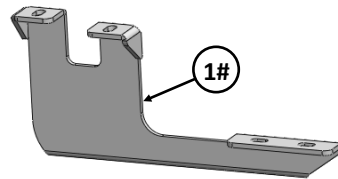


Front
↑

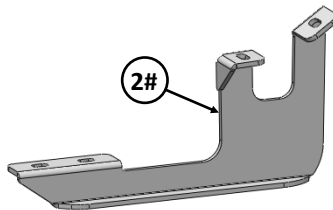
Passenger Side Step Bar



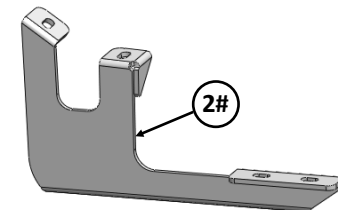
1#



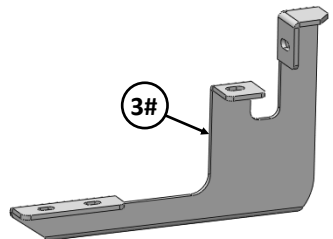
1#



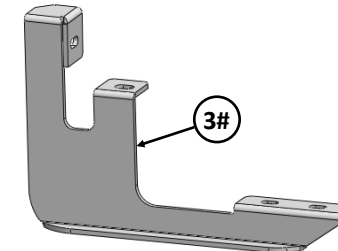
2#



2#



3#



3#

Customer Support: info@iboardauto.com



Scan for
Installation Video

Hardware Package A (For Bracket Installation)

| Item | QTY | Description | Item | QTY | Description |
|------|-----|---|------|-----|------------------------|
| 1# | 2 | Driver / Passenger Front Mounting Brackets | 4# | 12 | M8X1.25-25mm Hex Bolts |
| 2# | 2 | Driver / Passenger Center Mounting Brackets | 5# | 12 | M8 Large Flat Washers |
| 3# | 2 | Driver / Passenger Rear Mounting Brackets | 6# | 12 | M8 Lock Washers |



4 #



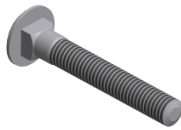
5 #



6 #

Hardware Package B (For Step Bar Installation)

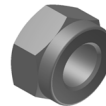
| Item | QTY | Description | Item | QTY | Description |
|------|-----|-----------------------------|------|-----|---|
| 1# | 12 | M8X1.25-35mm Carriage Bolts | 3# | 12 | M8 Nylon Lock Nuts |
| 2# | 12 | M8 Large Flat Washers | 4# | 6 | Sliders (Packed with Mounting Brackets) |



1 #



2 #



3 #



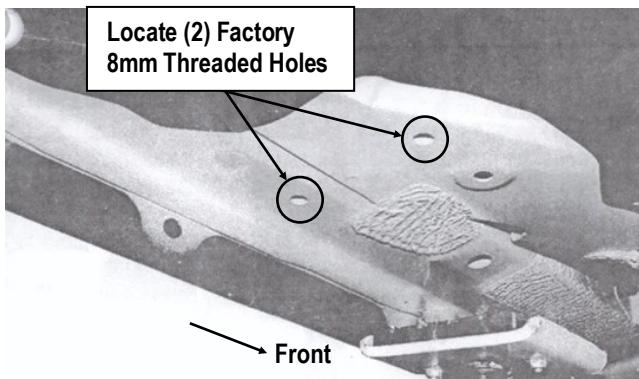
4 #



STEP 1

Starting on the driver side front of the vehicle, locate the (2) factory 8mm threaded holes located in the bottom of the floor panel, (Fig 1).

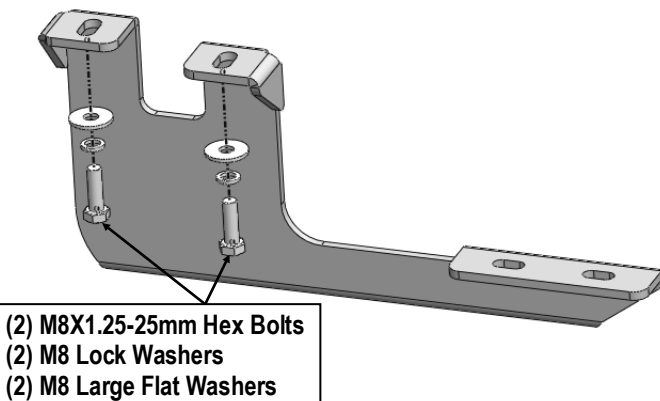
NOTE: The mounting threaded holes on body panel may be covered with insulation. Clean mounting locations as required for proper Bracket installation.



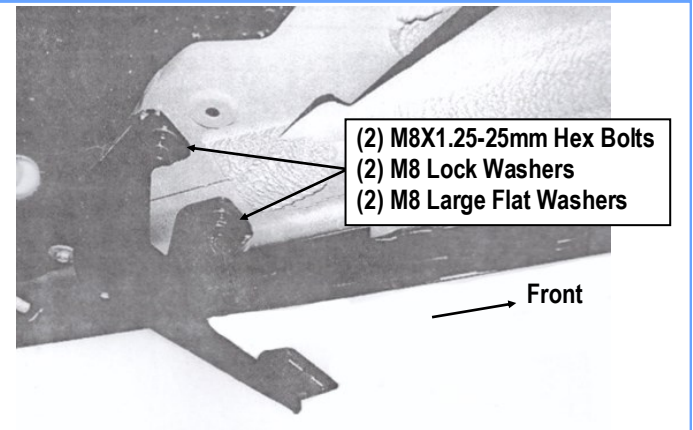
(Fig 1) Driver Side Front Mounting Location

STEP 2

Select (1) Driver Front Mounting Bracket. Attach the Bracket to the (2) threaded holes with (2) M8X1.25-25mm Hex Bolts, (2) M8 Large Flat Washers and (2) M8 Lock Washers, (Figs 2 & 3). Do not fully tighten hardware at this time.



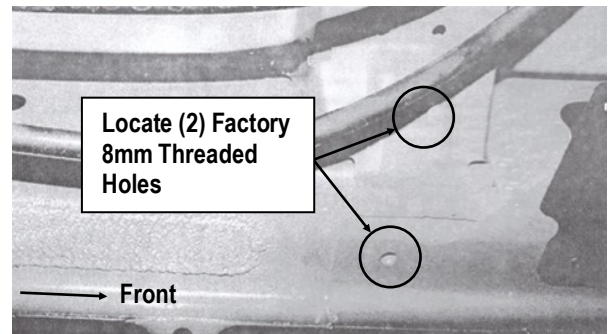
(Fig 2) Driver Front Mounting Bracket Installation



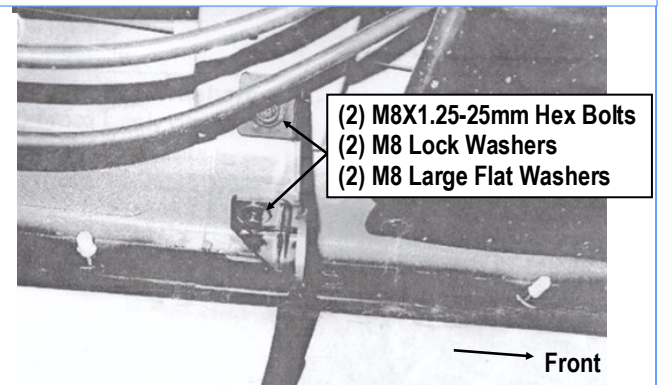
(Fig 3) Driver Front Mounting Bracket Installation

STEP 3

Move to Driver side center mounting location, (Fig 4). Repeat **Step 2** to bolt the Driver Center Mounting Bracket to the factory threaded holes, (Fig 5). Do not fully tighten hardware at this time.



(Fig 4) Driver Side Center Mounting Location

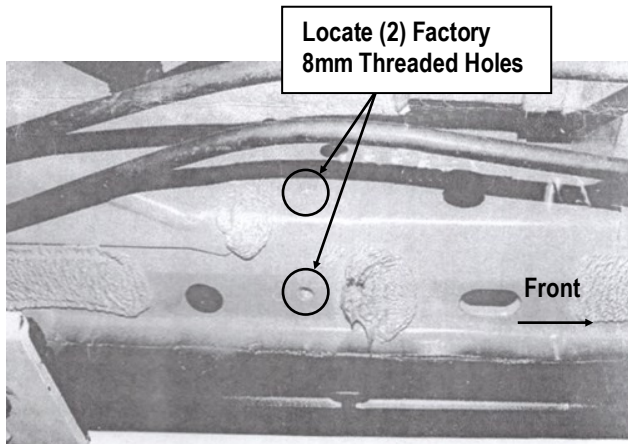


(Fig 5) Driver Center Mounting Bracket Installation

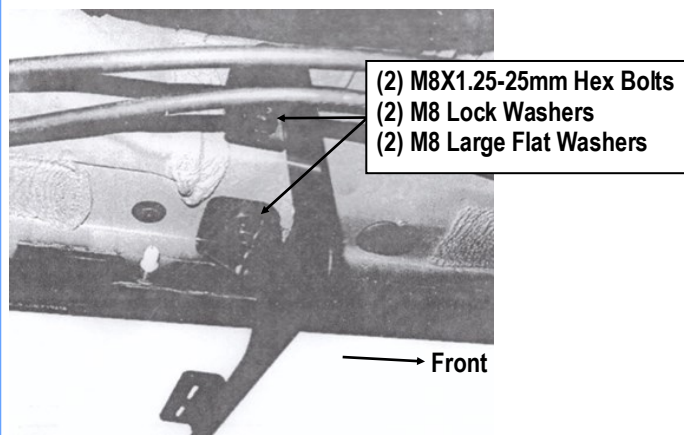


STEP 4

Next, move to Driver side rear mounting location, **(Fig 6)**. Repeat **Step 2** to bolt the Driver Rear Mounting Bracket to the factory threaded holes, **(Fig 7)**. Do not fully tighten hardware at this time.



(Fig 6) Driver Side Rear Mounting Location



(Fig 7) Driver Rear Mounting Bracket Installation

STEP 5

Once all (3) Driver side mounting brackets are installed, then proceed to the Step Bar installation. **(Figs 8 & 9)**

- (1) Select (1) Slider and (2) M8X1.25-35mm Carriage Bolts;
- (2) Install (2) M8X1.25-35mm Carriage Bolts in (1) Slider.
- (3) Slide the Slider (with carriage bolts) to the **Step Bar**.
- (4) Repeat to install the other (2) sliders to the step bar.
- (5) Attach the Step Bar (with the Sliders) onto the installed mounting brackets. Position the Sliders to the installed brackets. Secure the Step Bar to the installed Brackets by using (6) M8 Large Flat Washers and (6) M8 Nylon Lock Nuts and (3) Sliders, **(Fig 9)**. Do not fully tighten hardware at this time.

Note: The Sliders are packed with the Mounting Brackets.

Level and adjust the Step Bar and fully tighten all hardware.

Repeat **Steps 1-5** for the other side Step Bar installation. **The installation is completed!!!**

Attention

Do periodic inspections to the installation to make sure that all hardware is secure and tight.

In order to protect your bars/boards, please use mild soap/non-abrasive products for cleaning only.



Scan for
Installation Video

