

# iBoard®



Scan for  
Installation Video

## iBoard® by APS

PART#: IB-P123Y&H

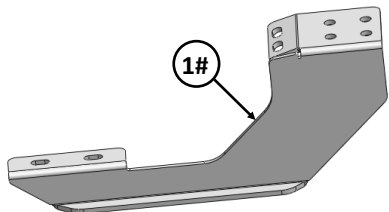
READ INSTRUCTIONS CAREFULLY BEFORE STARTING INSTALLATION. REMOVE CONTENTS FROM BOX AND VERIFY ALL PARTS ARE PRESENT. ASSISTANCE IS RECOMMENDED.

\*ROCKER PANEL MOUNT  
\*NO DRILLING REQUIRED

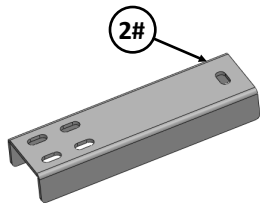
Fastener Size	Tightening Torque (ft-lbs)	Required
6mm	6-7	X
8mm	16-18	√
10mm	31-32	√
12mm	56-58	X
14mm	92-94	X

### PART LIST

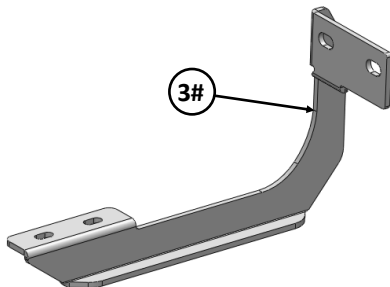
#### Driver Side Step Bar



1#



2#

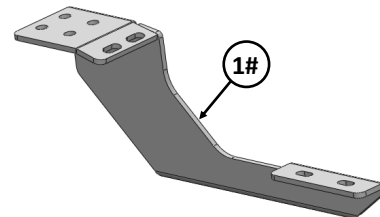
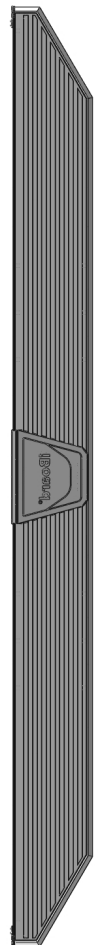


3#

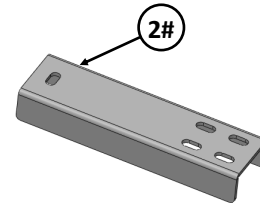
Front



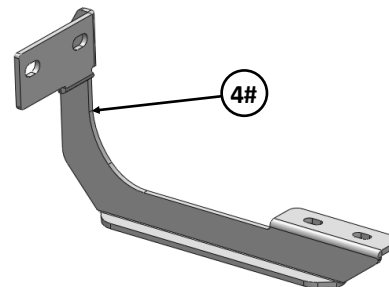
#### Passenger Side Step Bar



1#



2#



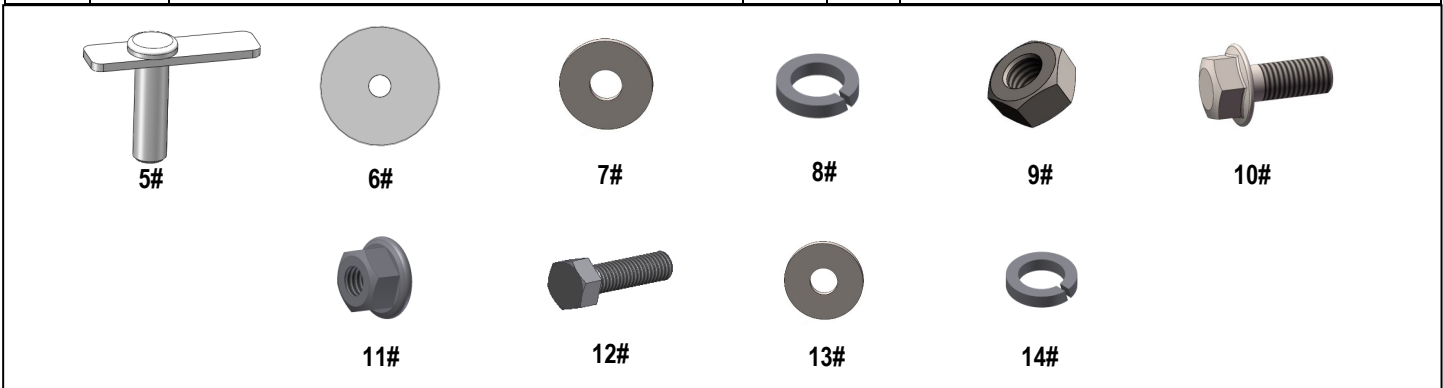
4#

Customer Support: [info@iboardauto.com](mailto:info@iboardauto.com)



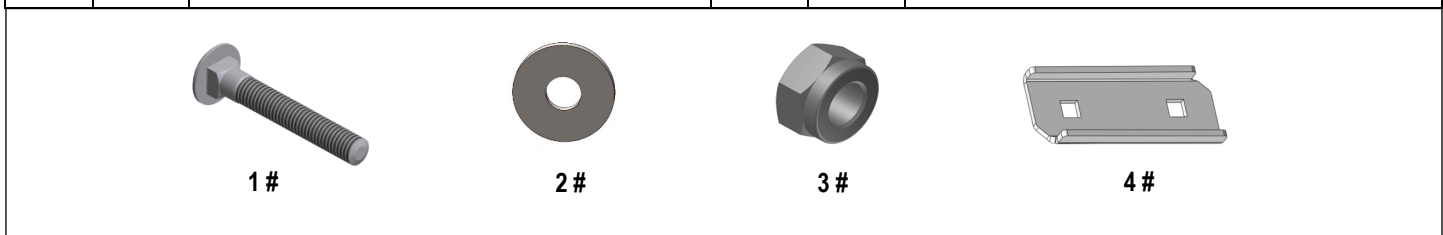
## Hardware Package A (For Bracket Installation)

Item	QTY	Description	Item	QTY	Description
1#	2	Driver / Passenger Front Mounting Brackets	8#	4	M10 Lock Washers
2#	2	Driver / Passenger Front Support Brackets	9#	4	M10X1.5 Hex Nuts
3#	1	Driver Rear Mounting Bracket	10#	8	M8X1.25-20mm Hex Flange Bolts
4#	1	Passenger Rear Mounting Bracket	11#	8	M8X1.25 Hex Flange Nuts
5#	4	M10X1.5-35mm Bolt Plates	12#	6	M8X1.25-30mm Hex Bolts
6#	4	M10 Plastic Washers	13#	6	M8 Flat Washers
7#	4	M10 Flat Washers	14#	6	M8 Lock Washers



## Hardware Package B (For Step Bar Installation)

Item	QTY	Description	Item	QTY	Description
1#	8	M8X1.25-35mm Carriage Bolts	3#	8	M8 Nylon Lock Nuts
2#	8	M8 Large Flat Washers	4#	4	Sliders (Packed with Mounting Brackets)

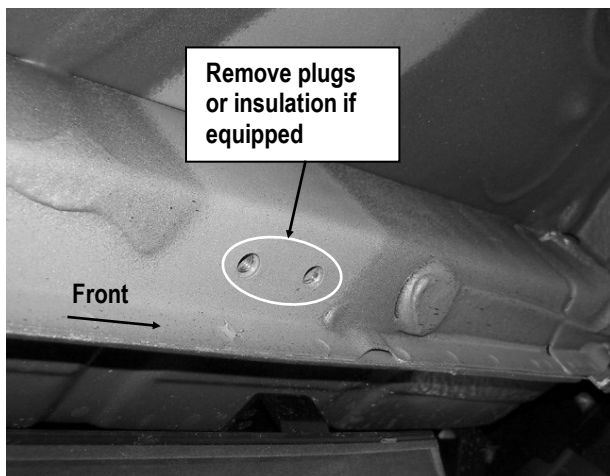




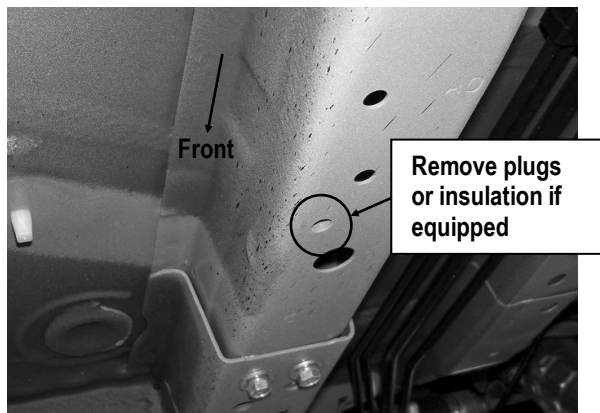
## STEP 1

Starting from the driver side of the vehicle, locate the (2) factory threaded holes at the bottom of the outer frame channel and the single threaded hole at the bottom of the inner frame channel, (Fig 1A & 1B).

**NOTE:** The threaded holes may be filled with plastic plugs or filled with insulation. Remove plugs or insulation before proceeding.



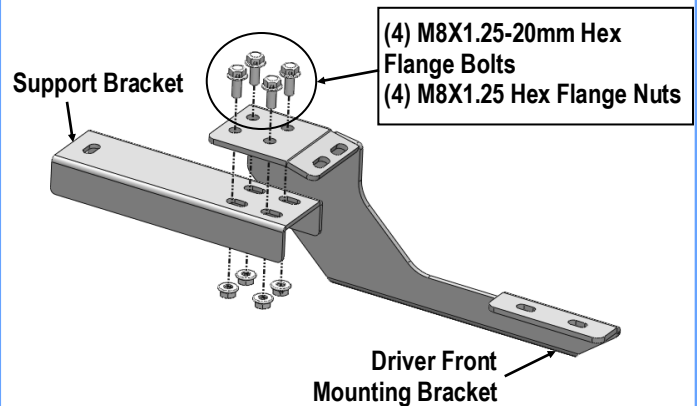
(Fig 1A) Driver Side Front Mounting Location  
(Two Threaded holes on the outer frame channel)



(Fig 1B) Driver Side Front Support Mounting Location  
(One threaded hole on the inner frame channel)

## STEP 2

Assemble (1) Driver Front Mounting Bracket and (1) Driver Front Support Bracket together with the included (4) M8X1.25-20mm Hex Flange Bolts and (4) M8X1.25 Hex Flange Nuts, (Fig 2). Do not fully tighten hardware at this time.

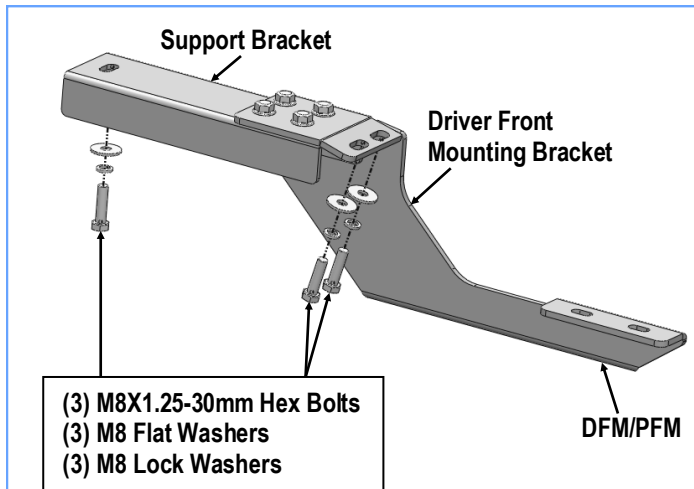


(Fig 2) Driver Front Brackets Assembly

## STEP 3

Position the assembled driver front brackets to the vehicle. Attach the Driver Front Mounting Bracket to the (2) threaded holes (Fig 1A) by using the provided (2) M8X1.25-30mm Hex Bolts, (2) M8 Lock Washers and (2) M8 Flat Washers, (Fig 3).

Line up the slot at the end of the Support Bracket with the threaded hole on the inner frame channel. Bolt the Support Bracket to the threaded hole on frame channel (Fig 1B) with (1) M8X1.25-30mm Hex Bolt, (1) M8 Lock Washer and (1) M8 Flat Washer, (Fig 3). Do not fully tighten hardware at this time.



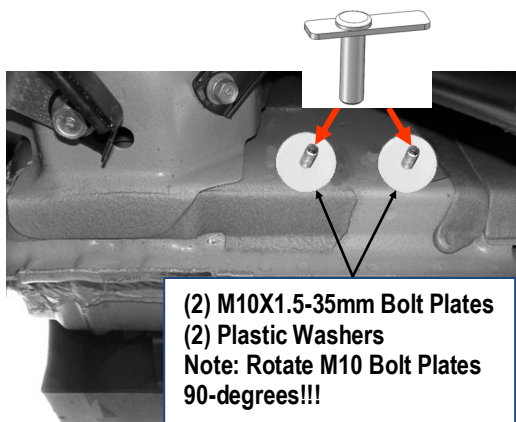
(Fig 3) Driver Front Brackets Installation

## STEP 4

Move to the Driver Side Rear Mounting Location on the body panel, (Fig 4).

Thread (2) M10 Plastic Washers onto (2) M10X1.5-35mm Bolt Plates. Insert the M10 Bolt Plates with Plastic Washer into the oval hole, and thread the Plastic Washers down against the body panel, (Fig 4). Rotate the M10 Bolt Plates 90-degrees to across the slot in the body panel.

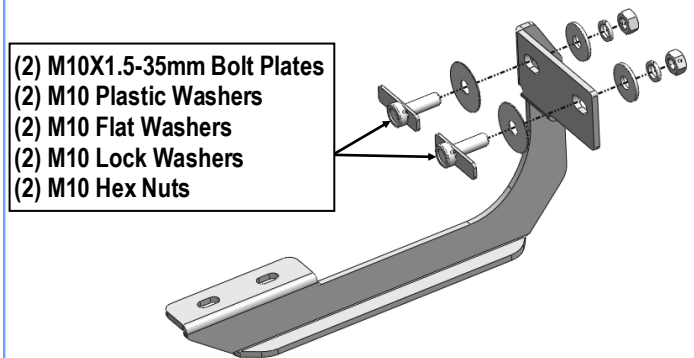
**IMPORTANT:** The Plastic Washer is designed to prevent the M10 Bolt Plate from falling into the body cavity within Bracket installation.



(Fig 4) Driver Side Rear Mounting Location

## STEP 5

Select (1) Driver Rear Mounting Bracket. Hang the Bracket onto the installed (2) M10 Bolt Plates and secure with (2) M10 Flat Washers, (2) M10 Lock Washers and (2) M10 Hex Nuts, (Fig 5). Do not fully tighten hardware at this time.



(Fig 5) Driver Rear Mounting Bracket Installation

## STEP 6

Once all (2) Driver side mounting brackets are installed, then proceed to the Step Bar installation. (Figs 6 & 7)

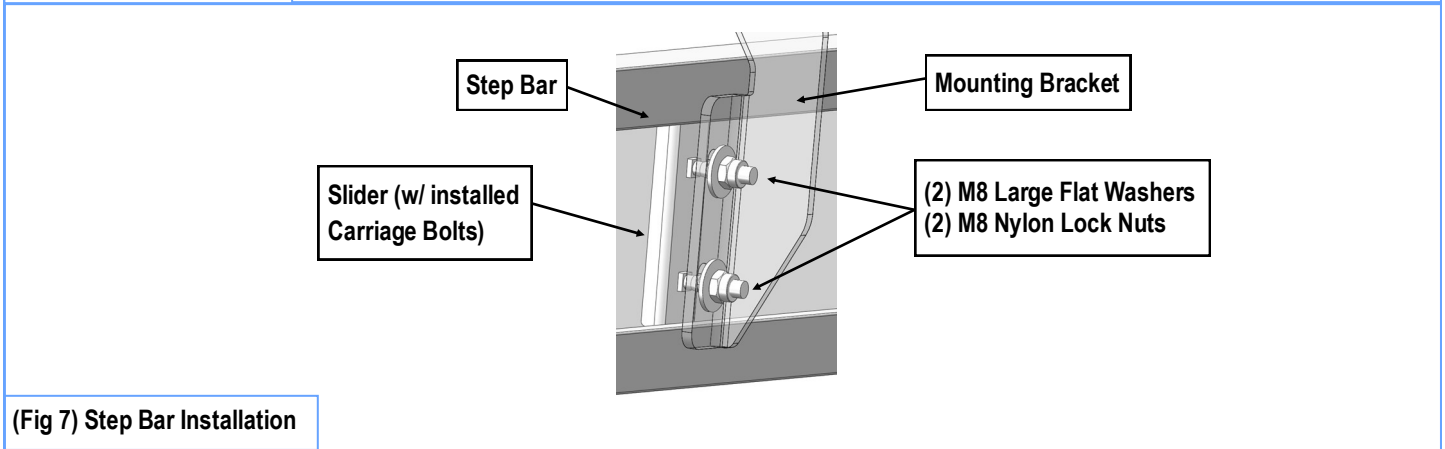
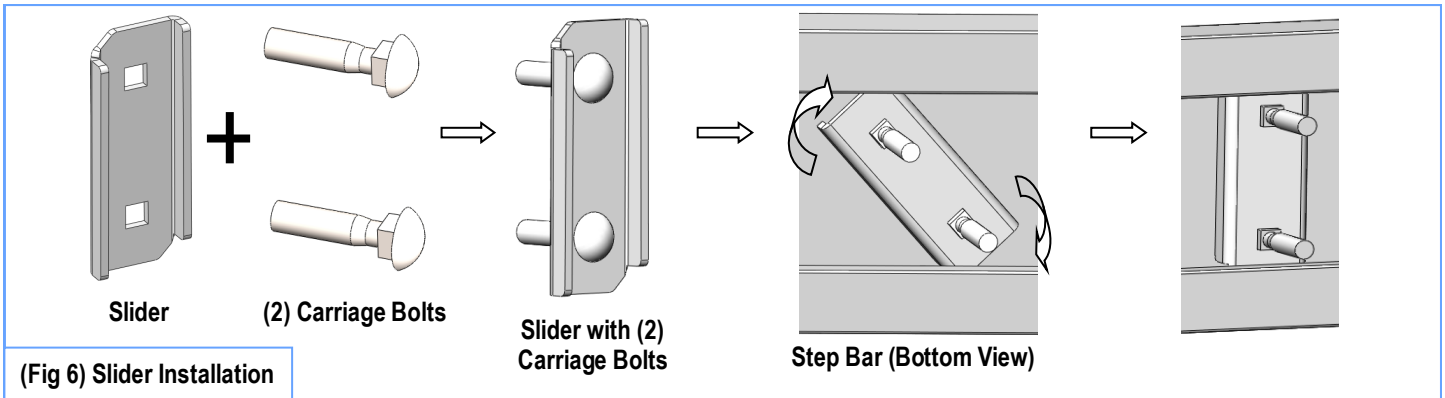
- (1) Select (1) Slider and (2) M8X1.25-35mm Carriage Bolts;
- (2) Install (2) M8X1.25-35mm Carriage Bolts in (1) Slider.
- (3) Slide the Slider (with carriage bolts) to the **Step Bar**.
- (4) Repeat to install the other (1) slider to the step bar.

(5) Attach the Step Bar (with the Sliders) onto the installed mounting brackets. Position the Sliders to the installed brackets. Secure the Step Bar to the installed Brackets by using (4) M8 Large Flat Washers and (4) M8 Nylon Lock Nuts and (2) Sliders, (Fig 7). Do not fully tighten hardware.

**Note:** The Sliders are packed with the Mounting Brackets.

Level and adjust the Step Bar and fully tighten all hardware.

Repeat **Steps 1-6** for the other side Step Bar installation. **The installation is completed!!!**



### Attention

Do periodic inspections to the installation to make sure that all hardware is secure and tight.  
In order to protect your bars/boards, please use mild soap/non-abrasive products for cleaning only.