



iBoard® Series

INSTALLATION INSTRUCTIONS

PART#: IB-R010

BEFORE INSTALLATION

REMOVE CONTENTS FROM BOX. VERIFY ALL PARTS ARE PRESENT. READ INSTRUCTIONS CAREFULLY BEFORE STARTING INSTALLATION. ASSISTANCE IS RECOMMENDED. THANK YOU FOR CHOOSING OUR PRODUCT!

These instructions are provided for reference only. We strongly recommend installation by a professional installer for the best results. We are not responsible for any damage caused by improper installation.

***ROCKER PANEL MOUNT**

***NO DRILLING REQUIRED**

Recommended Torque Values

Fastener Size	Tightening Torque (ft-lbs)	Torque Wrench Required (Yes/No)
6mm	6-7	Yes
8mm	16-18	Yes
10mm	31-32	No
12mm	56-58	No
14mm	92-94	No



Scan for
Installation Video

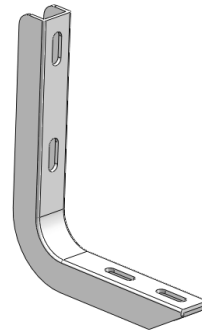
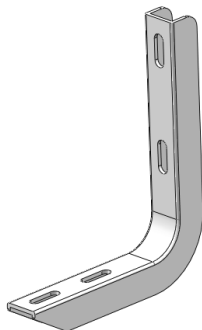
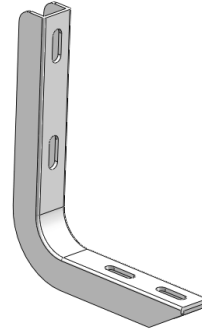
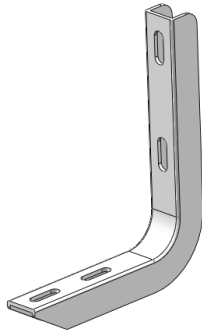
Mounting Bracket List			
Item	QTY	Bracket Label	Description
1#	4	N/A	Mounting Bracket for Driver / Passenger Side (All Mounting Brackets are Universal)

PART LIST

Driver Side

Front

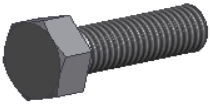
Passenger Side






Scan for
Installation Video


Hardware Package A (For Bracket Installation)					
Item	QTY	Description	Item	QTY	Description
A1	8	M8X1.25-25 Hex Bolts	A4	4	M8 Nylon Lock Nuts
A2	12	M8 Flat Washers	A5	4	M8 Clip Nuts
A3	4	M8 Lock Washers			




A1



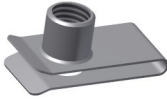
A2



A3

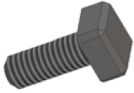


A4




A5


Hardware Package B (For Step Bar Installation)					
Item	QTY	Description	Item	QTY	Description
B1	8	M6X1-20mm Square Head Bolts	B3	8	M6 Nylon Lock Nuts
B2	8	M6 Large Flat Washers			



B1



B2



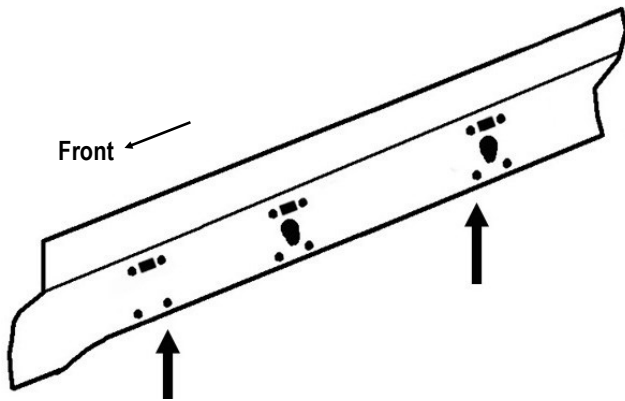
B3



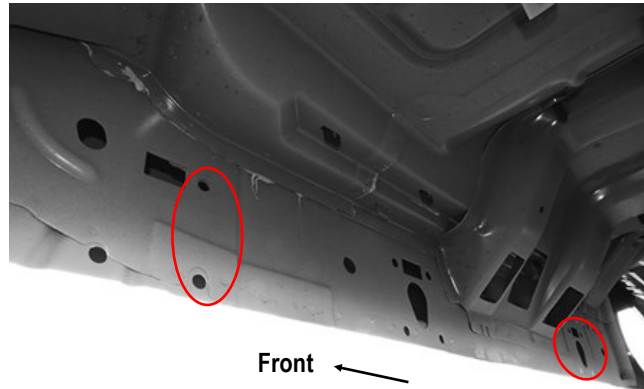
STEP 1: Locate Passenger Side Mounting Positions

- Locate the passenger side mounting positions, (Figs 1-2).

NOTE: The mounting holes may be covered by sealing tapes or insulation, remove as required.



(Fig 1) Passenger Side Mounting Positions

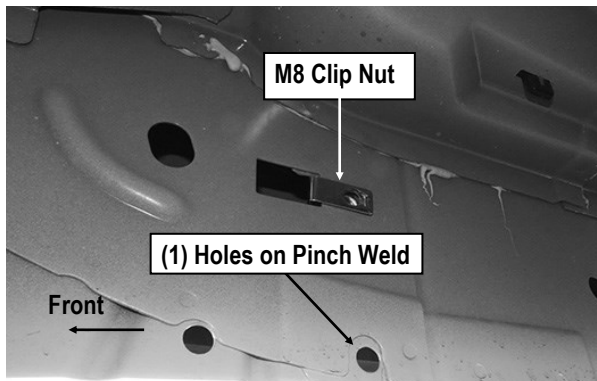


(Fig 2) Passenger Side Mounting Positions

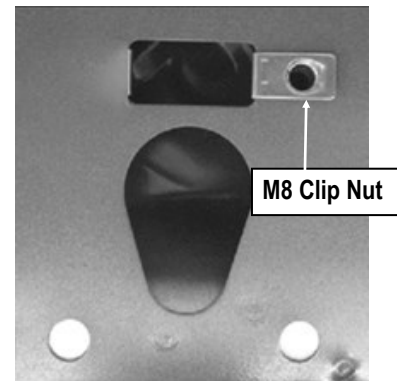
STEP 2: Install M8 Clip Nuts to the Mounting Holes

- Move to Passenger Side Front Mounting Location:** Install (1) A5 (M8 Clip Nut) to the round hole on the body panel (Fig 5).
- Move to Passenger Side Rear Mounting Location:** Install (1) A5 (M8 Clip Nuts) to the round hole on the body panel (Fig 6)

IMPORTANT: The threaded nuts on the M8 Clip Nuts must go towards the inside of the side panel



(Fig 3) M8 Clip Nut Installed
(On Passenger Side Front Mounting Location)



(Fig 4) M8 Clip Nut Installed
(On Passenger Side Rear Mounting Location)



STEP 3: Install Passenger Side Mounting Brackets

(1) Attach (1) Mounting Bracket to the installed M8 Clip Nut at Passenger Side Front Mounting Location (**Fig. 5**) with :

- (1) A1 (M8X1.25-30mm Hex Bolt)
- (1) A2 (M8 Flat Washer)
- (1) A3 (M8 Lock Washer)
- (1) A5 (M8 Clip Nut)

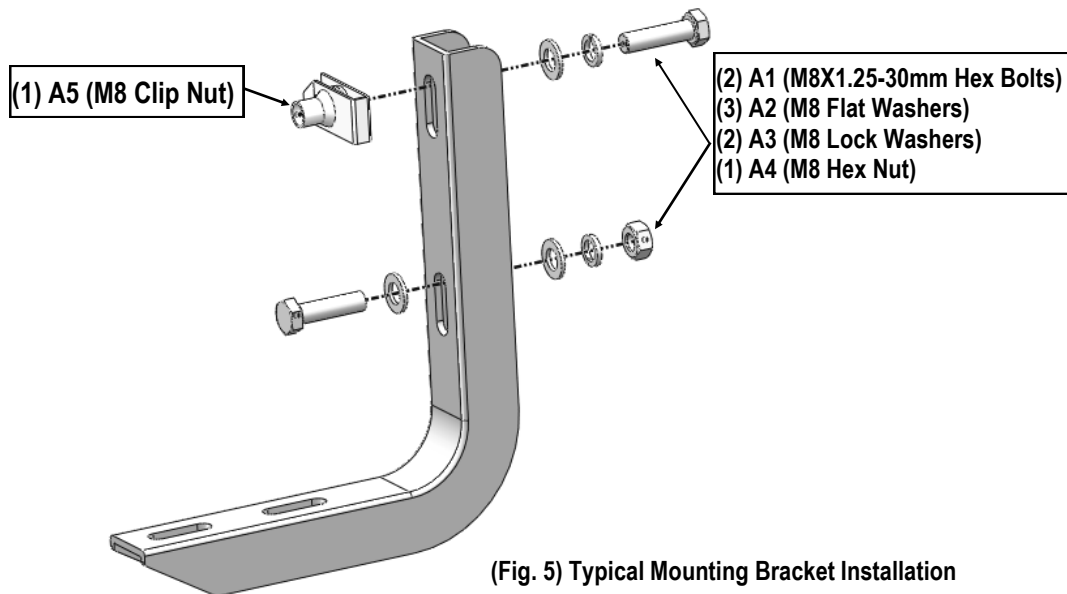
(2) Next, secure the lower mounting hole on the bracket to the pinch weld (**Fig. 5**) with :

- (1) A1 (M8X1.25-30mm Hex Bolt)
- (2) A2 (M8 Flat Washers)
- (1) A3 (M8 Lock Washer)
- (1) A4 (M8 Hex Nut)

(3) Repeat to install (1) Mounting Bracket to the Passenger Side Rear Mounting Location.

NOTE: All (4) Mounting Brackets are universal.

Don't fully tighten at this time.





STEP 4: Passenger Side Step Bar Installation

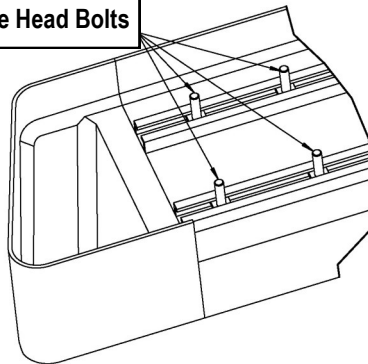
Once all (2) Passenger side mounting brackets are installed, then proceed to the Running Board installation (Figs. 6-7).

- Select a Running Board. Slip (2) B1 (M6X1-20mm Square Head Bolts) into each bottom channel (Fig. 6).
- Carefully position the Running Board onto the (2) Mounting Brackets.
- Attach the Running Board to each Mounting Bracket with (Fig. 7):
 - (2) B1 (M6X1-20mm Square Head Bolts)
 - (2) B2 (M6 Large Flat Washers)
 - (2) B3 (M6 Nylon Lock Nuts)

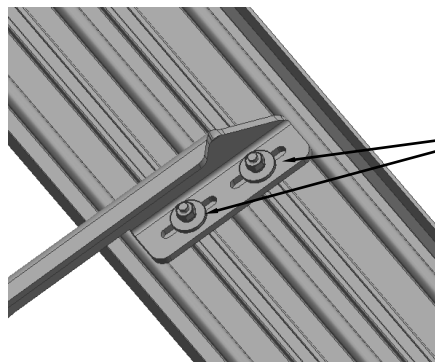
Note: Do not fully tighten hardware at this time.

IMPORTANT: Do not slide the Running Board on the Brackets or the bottom surface of the board will be damaged.

M6X1-20mm Square Head Bolts



(Fig. 6) Slip M6X1-20mm Square Head Bolts Into The Bottom Channels



(2) B1 (M6X1-20mm Square Head Bolts)
(2) B2 (M6 Large Flat Washers)
(2) B3 (M6 Nylon Lock Nuts)

(Fig. 7) Running Board Installed Onto Mounting Bracket



STEP 5: Passenger Side Running Board Adjustment

- Level and adjust the Running Board properly.
- Tighten all 6mm hardware with 6-7 ft-lbs torque.
- Tighten all 8mm hardware with 16-18 ft-lbs torque.

Important: Please follow the recommended Tightening Torques shown in the table on page 1.

Don't over tighten, or the nuts/bolts will be damaged.

STEP 6: The Other Side Running Board Installation

Move to the other side of the vehicle. Repeat **Steps 1-5** for the other Running Board installation.

Attention

- Do periodic inspections to the installation to make sure that all hardware is secure and tight.
- In order to protect your bars/boards, please use mild soap/non-abrasive products for cleaning only.