



iBoard® Series

INSTALLATION INSTRUCTIONS

PART#: IB-R927

BEFORE INSTALLATION

REMOVE CONTENTS FROM BOX. VERIFY ALL PARTS ARE PRESENT. READ INSTRUCTIONS CAREFULLY BEFORE STARTING INSTALLATION. ASSISTANCE IS RECOMMENDED. THANK YOU FOR CHOOSING OUR PRODUCT!

These instructions are provided for reference only. We strongly recommend installation by a professional installer for the best results. We are not responsible for any damage caused during installation.

***ROCKER PANEL MOUNT**

***DRILLING IS REQUIRED/ TRIMMING MAYBE REQUIRED**

Torque Value

| Fastener Size | Tightening Torque (ft-lbs) | Required |
|---------------|----------------------------|----------|
| 6mm | 6-7 | √ |
| 8mm | 16-18 | √ |
| 10mm | 31-32 | √ |
| 12mm | 56-58 | X |
| 14mm | 92-94 | X |

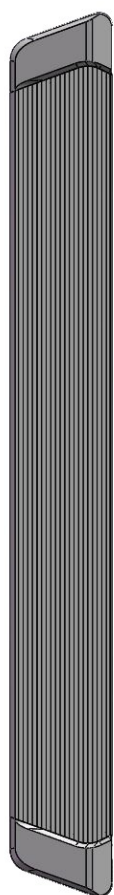


Scan for
Installation Video

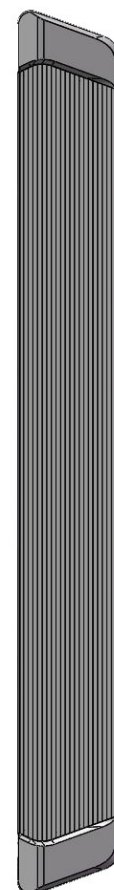
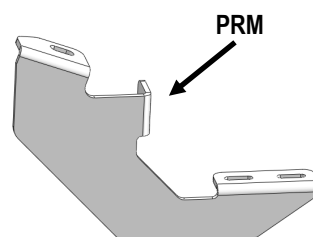
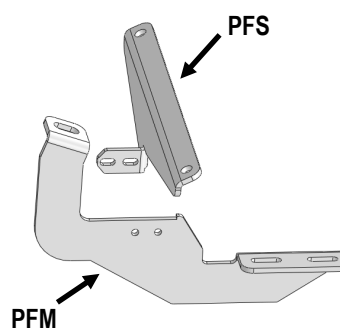
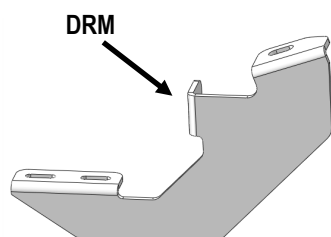
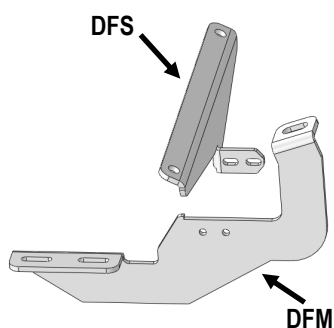
| Mounting Bracket List | | | | | | | |
|-----------------------|-----|---------------|-----------------------------------|------|-----|---------------|--------------------------------------|
| Item | QTY | Bracket Label | Description | Item | QTY | Bracket Label | Description |
| 1# | 1 | DFS | Support Bracket for Driver Front | 4# | 1 | PFS | Support Bracket for Passenger Front |
| 2# | 1 | DFM | Mounting Bracket for Driver Front | 5# | 1 | PFM | Mounting Bracket for Passenger Front |
| 3# | 1 | DRM | Mounting Bracket for Driver Rear | 6# | 1 | PRM | Mounting Bracket for Passenger Rear |

PART LIST

Front



Driver



Passenger



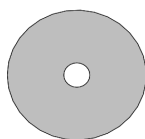
Scan for
Installation Video

Hardware Package A (For Bracket Installation)

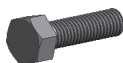
| Item | QTY | Description | Item | QTY | Description |
|------|-----|-----------------------|------|-----|------------------------|
| A1 | 4 | M10 Bolt Plates | A9 | 4 | M10 Large Flat Washers |
| A2 | 4 | M10 Plastic Washers | A10 | 8 | M10 Lock Washers |
| A3 | 4 | M6X1-20mm Hex Bolts | A11 | 8 | M10 Hex Nuts |
| A4 | 8 | M6 Large Flat Washers | A12 | 2 | M8X1.25-25mm Hex Bolts |
| A5 | 4 | M6 Lock Washers | A13 | 4 | M8 Large Flat Washers |
| A6 | 4 | M6 Hex Nuts | A14 | 2 | M8 Lock Washers |
| A7 | 4 | M10 J-Bolts | A15 | 2 | M8 Hex Nuts |
| A8 | 4 | M10 Flat Washers | | | |



A1



A2



A3



A4



A5



A6



A7



A8



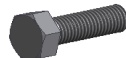
A9



A10



A11



A12



A13



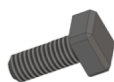
A14



A15

Hardware Package B (For Running Board Installation)

| Item | QTY | Description | Item | QTY | Description |
|------|-----|-----------------------------|------|-----|--------------------|
| B1 | 8 | M6X1-20mm Square Head Bolts | B3 | 8 | M6 Nylon Lock Nuts |
| B2 | 8 | M6 Large Flat Washers | | | |



B1



B2



B3

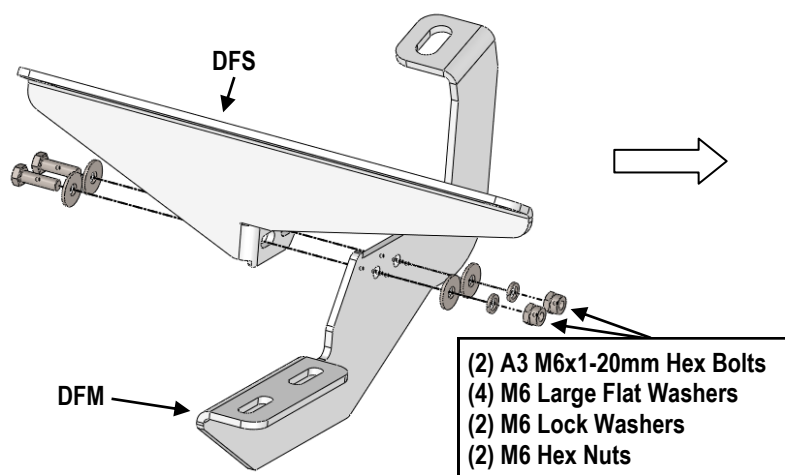


STEP 1: Assemble Driver Front Mounting Bracket

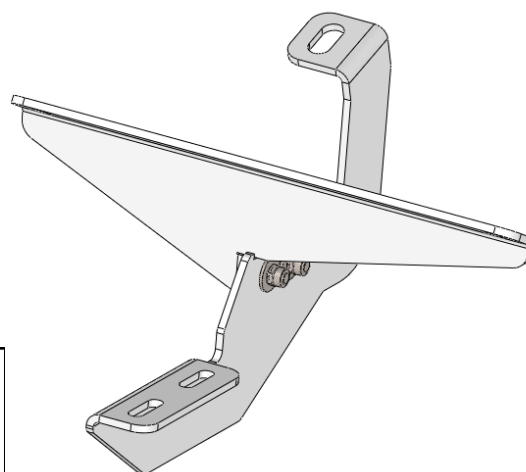
Assemble Driver Front Mounting Bracket (DFM+DFS) (Fig 1 & 2) with:

- (2) A3 (M6X1-20mm Hex Bolts)
- (4) A4 (M6 Large Flat Washers)
- (2) A5 (M6 Lock Washers)
- (2) A6 (M6 Hex Nuts)

Note: Do not fully tighten hardware at this time.



(Fig 1) Driver Front Mounting Bracket Assembly



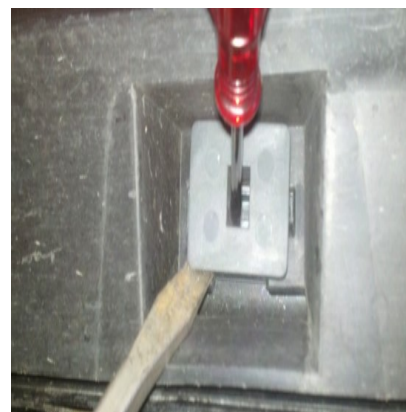
(Fig 2) Driver Front Mounting Bracket Assembled

STEP 2: Locate Driver Side Front Mounting Position

(1) Start installation from the driver side front of the vehicle. Unsecure the driver side rocker panel trim by releasing the plastic retainers along the bottom using a pair of small screwdrivers. With the doors open remove the (2) forward most retainers by sliding them down and off of the plastic rocker panel trim. (Figs 3 & 4).



(Fig 3) Release Plastic Retainers Along The Body Panel

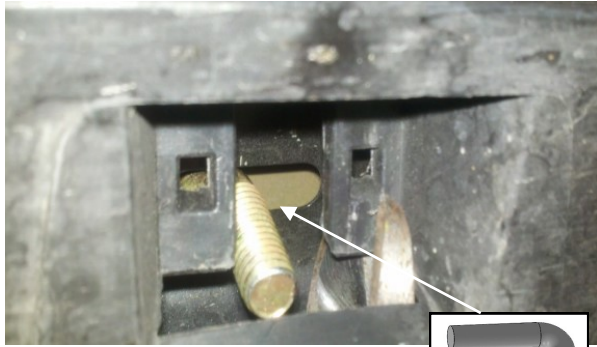


(Fig 4) Remove The (2) Forward Most Retainers



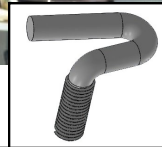
(2) Insert (2) **M10 J-Bolts** into the (2) slots no longer covered by the plastic retainers.

Note: Slight trimming of the plastic is recommended to add clearance for nuts and washers, (Figs 5 & 6).



M10 J-Bolt

(Fig 5) Insert the M10 J-Bolt

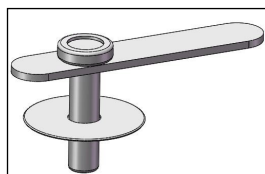


(2) M10 J-Bolts

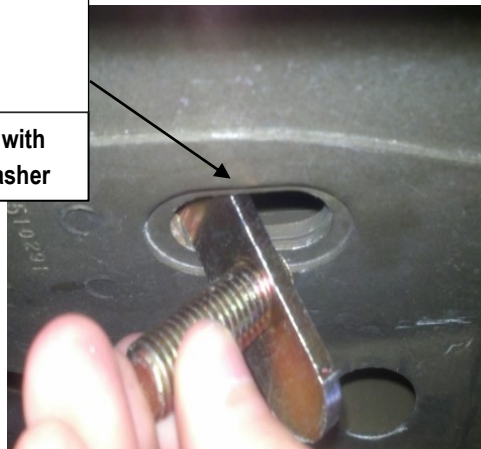
(Fig 6) M10 J-Bolt Installed
(on Driver Side Front Mounting Location)

(3) Insert (1) **M10 Bolt Plate** with (1) **M10 Plastic Washer** into the front driver side slot under the vehicle (Fig 7).

NOTE: Some models have additional sheet metal within the uni-body on the driver side front slot. Installation of bolt plate requires inserting the bolt plate threaded end first and pulling the bolt into an appropriate position with a magnet prior to installing the plastic washer.



M10 Bolt Plate with
M10 Plastic Washer



(Fig 7) Insert (1) M10 Bolt Plate with (1) M10 Plastic Washer



STEP 3: Install Driver Front Mounting Bracket

(1) Attach the Assembled Driver Front Mounting Bracket (**DFS+DFM**) to the Installed **A1 (M10 Bolt plate)** (See Figs 3-8) with :

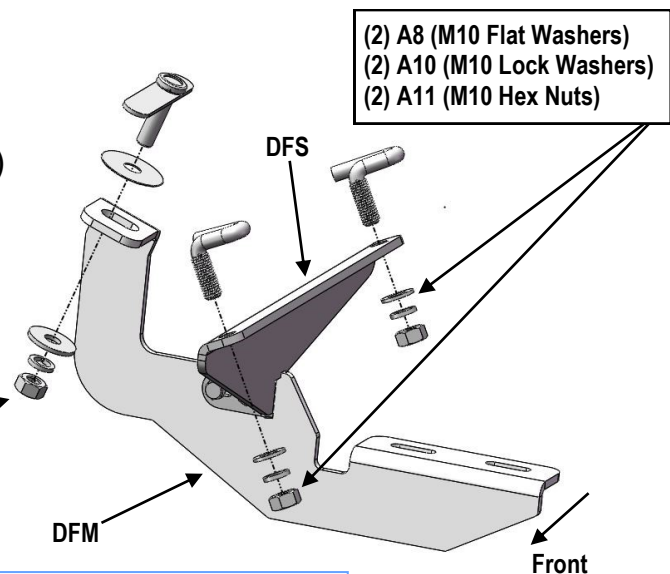
- (1) A2 (M10 Plastic Washer)
- (1) A9 (M10 Large Flat Washer)
- (1) A10 (M10 Lock Washer)
- (1) A11 (M10 Hex Nut)

(2) Attach the Assembled Driver Front Mounting Bracket (**DFS+DFM**) to the Installed **(2) A7 (M10 J-Bolts)** (See Figs 3-8) with :

- (2) A8 (M10 Flat Washers)
- (2) A10 (M10 Lock Washers)
- (2) A11 (M10 Hex Nuts)

NOTE: Do not fully tighten hardware at this time.

- (1) A2 (M10 Plastic Washer)
(1) A9 (M10 Large Flat Washer)
(1) A10 (M10 Lock Washer)
(1) A11 (M10 Hex Nut)

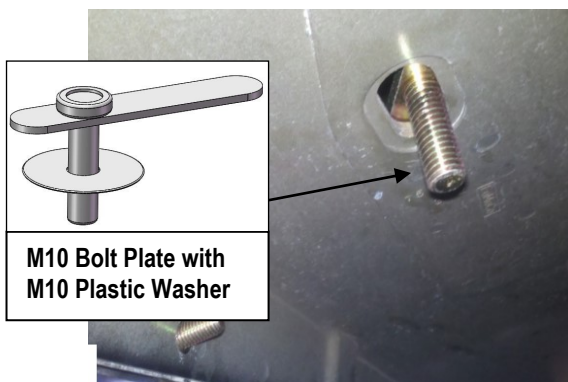


(Fig 8) Driver Side Front Mounting Bracket Installation

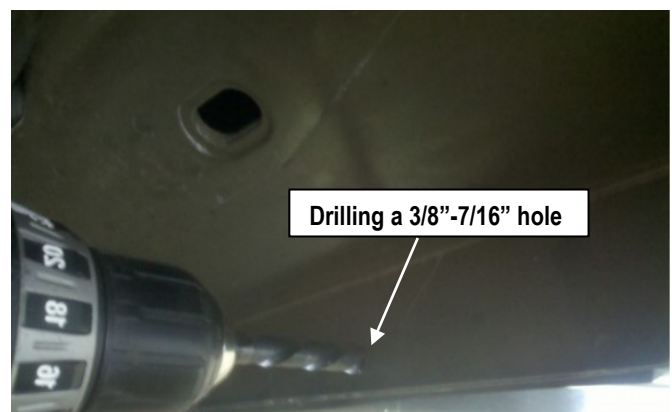
STEP 4: Locate Driver Side Rear Mounting Positions

(1) Move to the driver side rear mounting location of the vehicle. Insert (1) **M10 Bolt Plate** with (1) **M10 Plastic Washer** into the slot under the vehicle, (Fig 9).

(2) Install the Driver Rear Mounting Bracket to the installed **M10 Bolt Plate** temporarily, attach the rear bracket to the pinch weld, use the bracket as a template, Center punch and drill a 8-10mm hole on the pinch weld, (Figs 10).



(Fig 9) Insert (1) M10 Bolt Plate with (1) M10 Plastic Washer



(Fig 10) Center Punch and Drill a 10-12mm Hole



STEP 5: Install Driver Rear Mounting Bracket

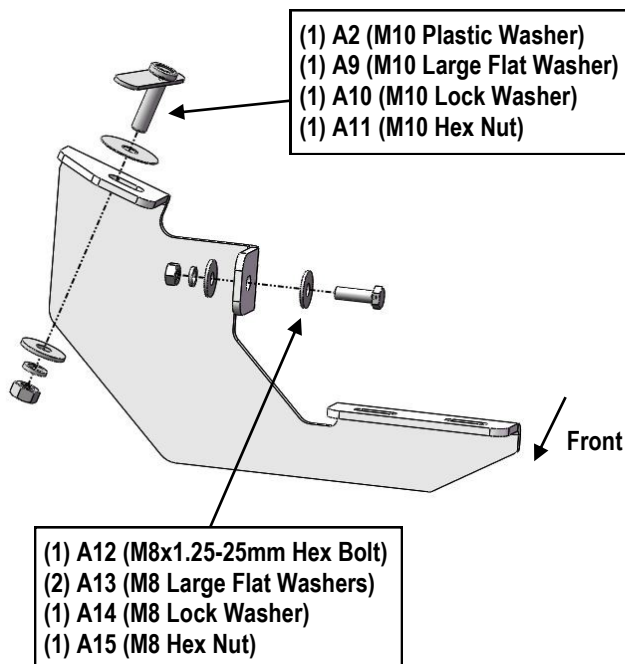
(1) Attach the Driver Rear Mounting Bracket (**DRM**) to the Installed **A1 (M10 Bolt plate)** (See Figs 9-12) with :

- (1) A2 (M10 Plastic Washer)
- (1) A9 (M10 Large Flat Washer)
- (1) A10 (M10 Lock Washer)
- (1) A11 (M10 Hex Nut)

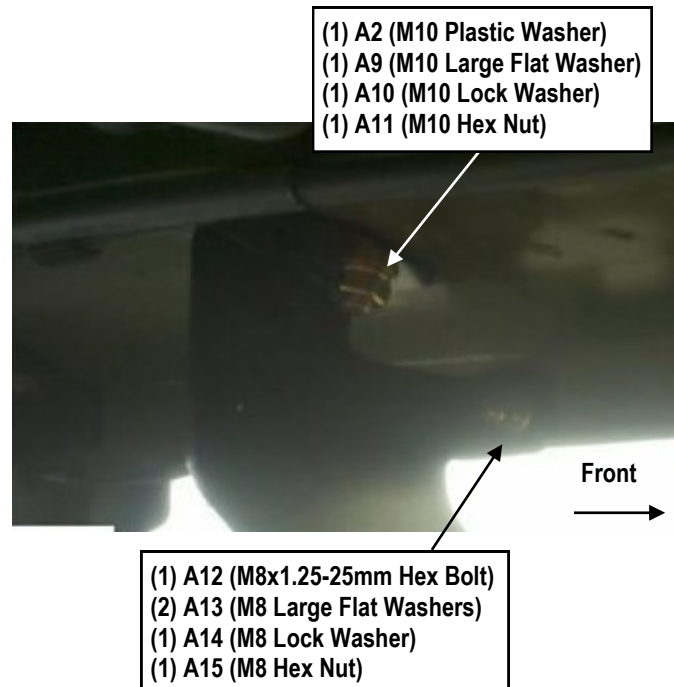
(2) Attach the Driver Rear Mounting Bracket (**DRM**) On the pre-drilled 8-10mm hole (See Figs 9-12) with :

- (1) A12 (M8X1.25 Hex Bolt)
- (2) A13 (M8 Large Flat Washers)
- (1) A14 (M8 Lock Washer)
- (1) A15 (M8 Hex Nut)

NOTE: Do not fully tighten hardware at this time.



(Fig 11) Driver Side Rear Mounting Bracket Installation



(Fig 12) Driver Rear Mounting Bracket Installed



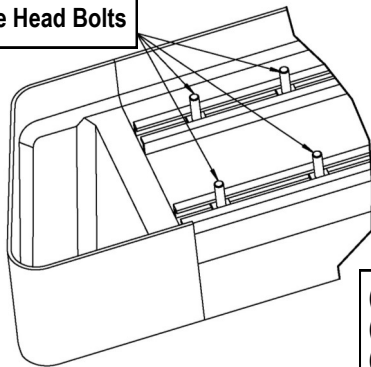
STEP 6: Driver Side Running Board Installation

Once all (2) mounting brackets are installed, then proceed to the Running Board installation.

- (1) Select a Running Board. Slide (2) B1 M6X1-20mm Square Head Bolts into each bottom channel (**Fig 13**).
- (2) Carefully position the Running Board onto the (2) Mounting Brackets.
- (3) Attach the Running Board to each Mounting Bracket (**Fig 14**) with
 - (2) B1 M6X1-20mm Square Head Bolts
 - (2) B2 M6 Large Flat Washers and
 - (2) B3 M6 Nylon Lock Nuts

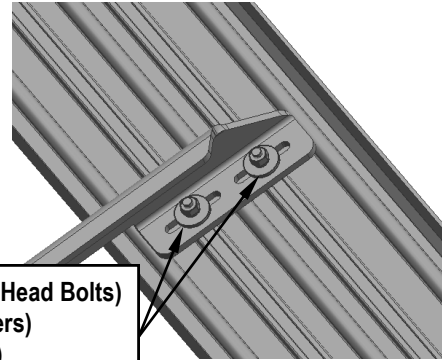
Note: Do not slide the Running Board on the Brackets or the bottom surface of the board will be damaged.

M6X1-20mm Square Head Bolts



(Fig 13) Slip M6X1-20mm Square Head Bolts Into The Bottom Channels

(2) B1 (M6X1-20mm Square Head Bolts)
(2) B2 (M6 Large Flat Washers)
(2) B3 (M6 Nylon Lock Nuts)



(Fig 14) Running Board Installed Onto Mounting Bracket

STEP 7: Driver Side Running Board Adjustment

- Level and adjust the Running Board properly.
- Tighten all 6mm hardware with 6-7 ft-lbs torque and 8mm hardware with 16-18 ft-lbs torque and 10mm hardware with 31-32 ft-lbs torque

STEP 8: The Other Side Running Board Installation

Repeat Steps 1-7 for the Other Side Running Board Installation.

And then installation is completed!!!

Attention

Do periodic inspections to the installation to make sure that all hardware is secure and tight.
In order to protect your bars/boards, please use mild soap/non-abrasive products for cleaning only.