



# iBoard® Series

## INSTALLATION INSTRUCTIONS

**PART#: IB-R922**

### BEFORE INSTALLATION

REMOVE CONTENTS FROM BOX. VERIFY ALL PARTS ARE PRESENT. READ INSTRUCTIONS CAREFULLY BEFORE STARTING INSTALLATION. ASSISTANCE IS RECOMMENDED. THANK YOU FOR CHOOSING OUR PRODUCT!

These instructions are provided for reference only. We strongly recommend installation by a professional installer for the best results. We are not responsible for any damage caused during installation.

**\*ROCKER PANEL MOUNT**

**\*DRILLING IS REQUIRED**

### Torque Value

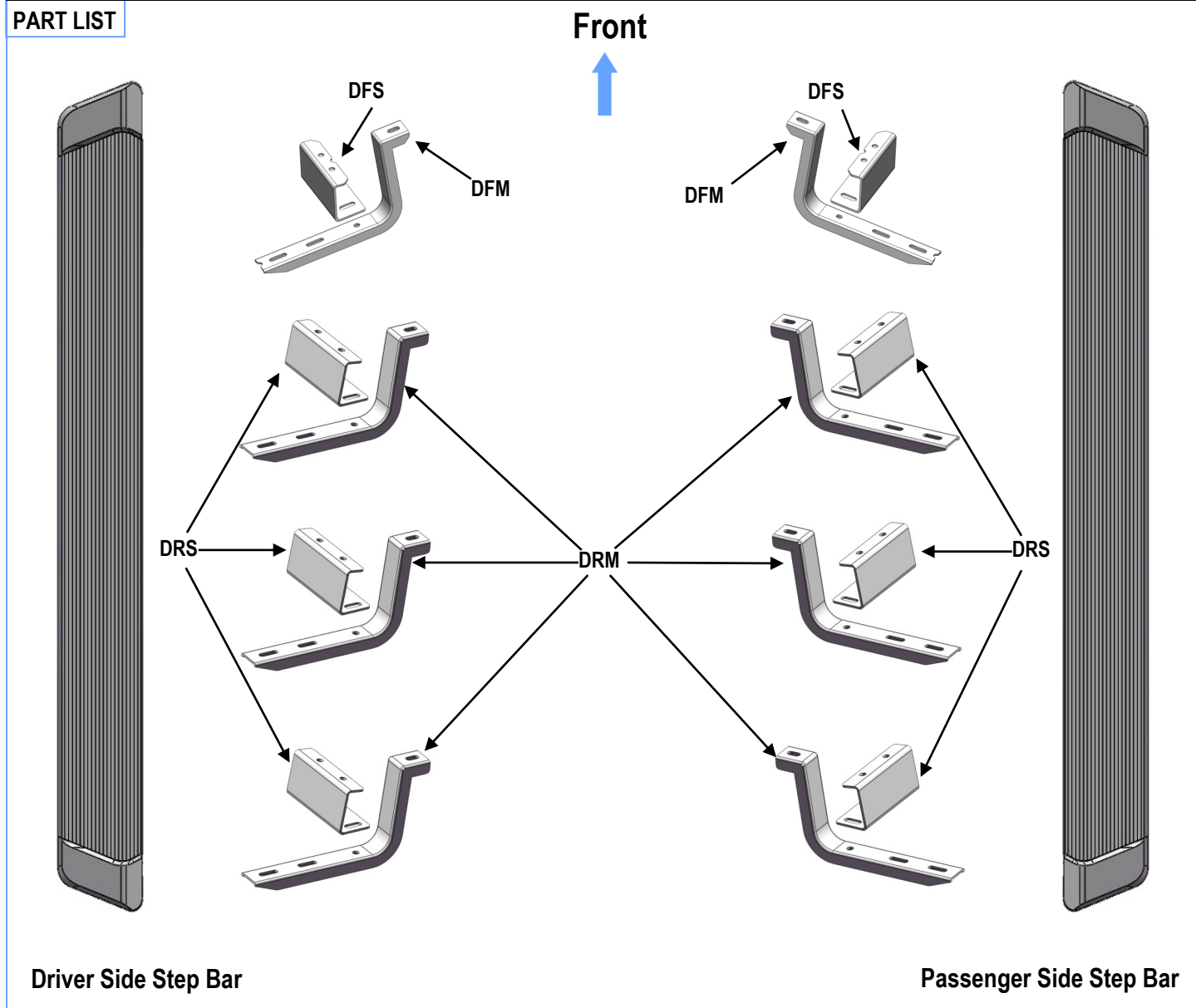
Fastener Size	Tightening Torque (ft-lbs)	Required
6mm	6-7	√
8mm	16-18	√
10mm	31-32	X
12mm	56-58	X
14mm	92-94	X



Mounting Bracket List							
Item	QTY	Bracket Label	Description	Item	QTY	Bracket Label	Description
1#	2	DFM	Mounting Bracket for Driver /Passenger Front	3#	6	DRM	Mounting Bracket for Driver /Passenger Center /Rear
2#	2	DFS	Support Bracket for Driver/ Passenger Front	4#	6	DRS	Support Bracket for Driver /Passenger Center /Rear

**PART LIST**

**Front**

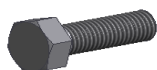




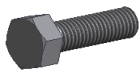
Scan for  
Installation Video

### Hardware Package A (For Bracket Installation)

Item	QTY	Description	Item	QTY	Description
A1	6	M8X1.25-25 Hex Bolts	A4	24	M8 Nylon Lock Nuts
A2	24	M8X1.25-20 Hex Bolts	A5	6	M8 Clip Nuts
A3	54	M8 Flat Washers	A6	2	ST6.3-25mm Hex Self Tapping Screws



A1



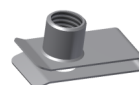
A2



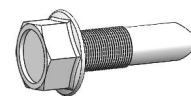
A3



A4



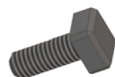
A5



A6

### Hardware Package B (For Step Bar Installation)

Item	QTY	Description	Item	QTY	Description
B1	16	M6X1-20mm Square Head Bolts	B3	16	M6 Nylon Lock Nuts
B2	16	M6 Large Flat Washers			



B1



B2

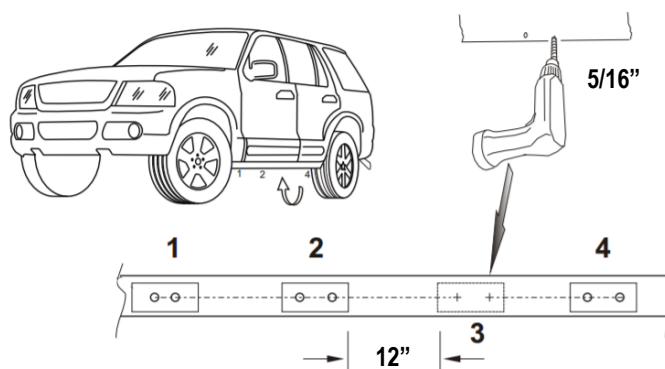


B3



## STEP 1: Locate Driver Side Mounting Positions

- (1) Remove splash guard from underside of vehicle.
- (2) Drill 5/16" holes on the 3rd mounting position pinch weld. (Fig 1).
  - \* **Measure 12" between 2nd and 3rd mounting positions**
  - \* **Use a Support Bracket (DRS) as a template, mark the locations of two mounting holes on the pinch weld.**



(Fig 1) Driver Side Mounting positions

## STEP 2: Install Driver Front & 2nd & 4nd Mounting Brackets

- (1) Attach the Driver Front Support Bracket (DFS) to the 1st Mounting Location with (Fig 2) :
  - (2) A2 (M8X1.25-20mm Hex Bolts)
  - (4) A3 (M8 Flat Washers)
  - (2) A4 (M8 Nylon Lock Nuts)
- (2) Select (1) A5 (M8 Clip Nut.) Line up the Clip Nut with the round hole beside the support bracket. (Fig 3).
- (3) Attach the upper mounting hole of the Deriver Front Mounting Bracket (DFM) to the installed M8 Clip Nut and connect the lower hole to the installed Driver Front Support Bracket (DFS) with (Fig 4) :
  - (1) A1 (M8X1.25-25mm Hex Bolt)
  - (3) A3 (M8 Flat Washers)
  - (1) A2 (M8X1.25-20mm Hex Bolt)
  - (1) A4 (M8 Nylon Lock Nut)
- (4) Repeat to install 2nd & 4nd Support Brackets (DCS) and Mounting Brackets (DCM).

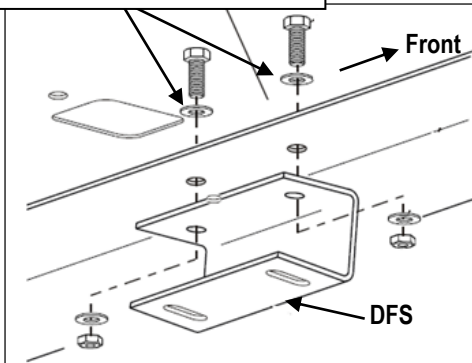
**NOTE: The Front Support Brackets are different with 2nd and 4nd Support Brackets.**

**The Front Mounting Brackets are different with 2nd and 4nd Mounting Brackets.**

**Do not fully tighten hardware at this time.**

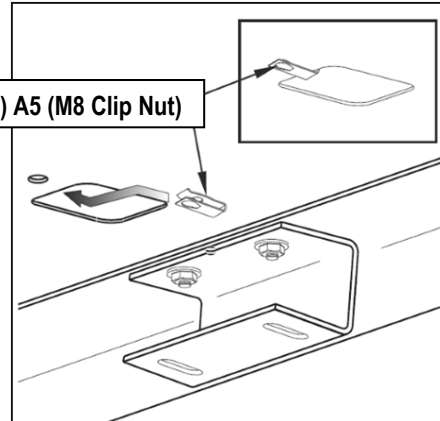


- (2) A2 (M8X1.25-20mm Hex Bolts)
- (4) A3 (M8 Flat Washers)
- (2) A4 (M8 Nylon Lock Nuts)



(Fig 2) Driver Front Support Bracket (DFS) Installation

- (1) A5 (M8 Clip Nut)

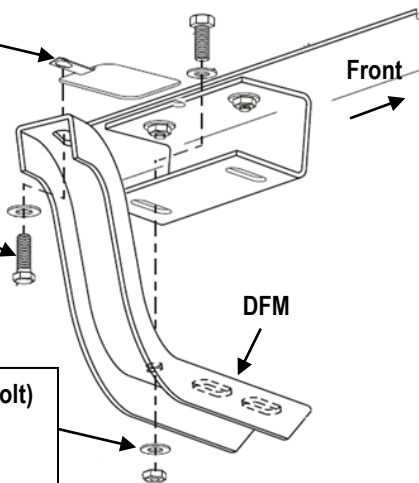


(Fig 3) A5 (M8 Clip Nut) Installation

- Installed M8 Clip Nut

- (1) A1 (M8X1.25-25mm Hex Bolt)
- (1) A3 (M8 Flat Washers)

- (1) A2 (M8X1.25-20mm Hex Bolt)
- (2) A3 (M8 Flat Washers)
- (1) A4 (M8 Nylon Lock Nut)



(Fig 4) Driver Front Mounting Bracket (DFM) Installation



## STEP 3: Install Driver 3rd Mounting Brackets

(1) Attach the Driver Center Support Bracket (**DRS**) to the 3rd Mounting Location (Drilled Holes on **Fig 1**) with (**Fig 5**) :

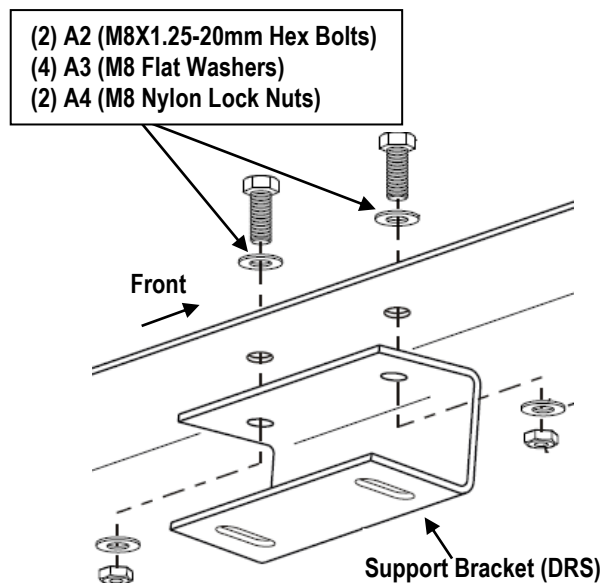
- (2) A2 (M8X1.25-20mm Hex Bolts)
- (4) A3 (M8 Flat Washers)
- (2) A4 (M8 Nylon Lock Nuts)

(2) Attach Center Mounting Bracket (**DRM**) to the installed Center Support Bracket (**DRS**) with (**Fig 6**)

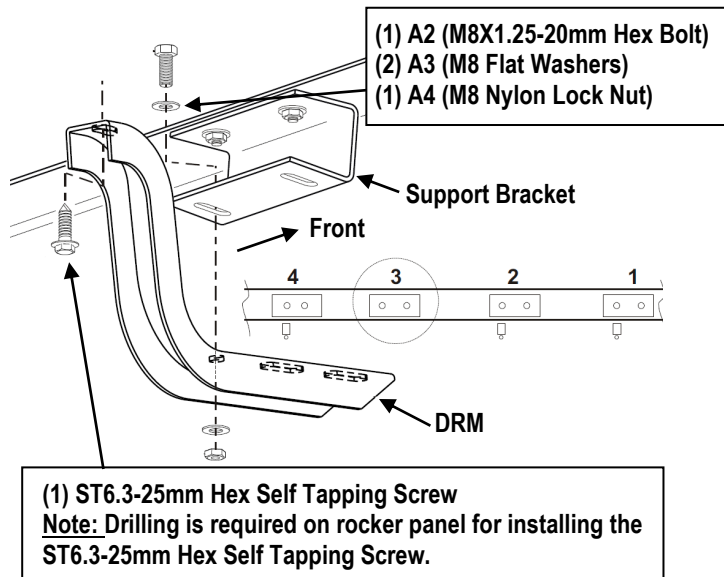
- (2) A3 (M8 Flat Washers)
- (1) A2 (M8X1.25-20mm Hex Bolt)
- (1) A4 (M8 Nylon Lock Nut)

(3) Adjust the Center Mounting Bracket properly. Mark and drill (1) 6mm hole on rocker panel. Attach the mounting Bracket to the drilled hole with (**Fig 6**) (1) A6 (ST6.3-25mm Hex Self Tapping Screws)

**NOTE: Do not fully tighten hardware at this time.**



(Fig 5) Support Bracket Installation  
(On the 3rd Mounting Location)



(Fig 6) Mounting Bracket Installation  
(On the 3rd Mounting Location)



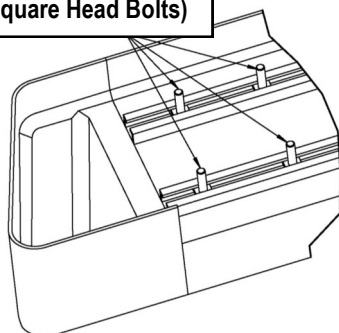
## STEP 4: Driver Side Running Board Installation

- (1) Slide (4) B1 (M6X1-20mm Square Head Bolts) into each bottom channel (**Fig 7**).
- (2) Carefully position the Running Board onto the (4) Mounting Brackets.
- (3) Attach the Running Board to each Mounting Brackets (**Fig 8**) with:

- (2) B1 (M6X1-20mm Square Head Bolts)
- (2) B2 (M6 X-Large Flat Washers )
- (2) B3 (M6 Nylon Lock Nuts)

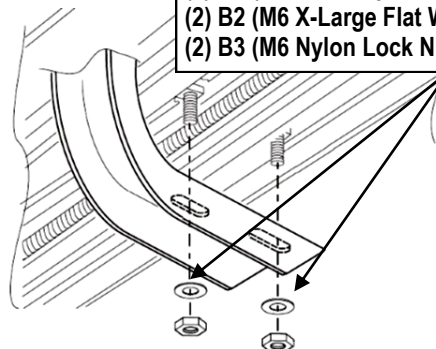
**Note: Do not slide the Running Board on the Brackets or the bottom surface of the board will be damaged.**

(4) B1 (M6X1-20mm Square Head Bolts)



(Fig 7) Slide M6X1-20mm Square Head Bolts Into  
The Bottom Channels

(2) B1 (M6X1-20 Square Head Bolts)  
(2) B2 (M6 X-Large Flat Washers)  
(2) B3 (M6 Nylon Lock Nuts)



(Fig 8) Running Board Installed Onto Mounting  
Bracket (Example)

## STEP 5: Driver Side Step Bar Adjustment

- Level and adjust the assembled Step Bar properly.
- Tighten all 6mm hardware with 6-7 ft-lbs torque; all 8mm hardware with 16-18 ft-lbs torque.

## STEP 6: The Other Side Step Bar Installation

Repeat Steps 1-5 for the Other Side Step Bar Installation.  
And then installation is completed!!!

### Attention

Do periodic inspections to the installation to make sure that all hardware is secure and tight.  
In order to protect your bars/boards, please use mild soap/non-abrasive products for cleaning only.