



iBoard® Series

INSTALLATION INSTRUCTIONS

PART#: IB-R552

BEFORE INSTALLATION

REMOVE CONTENTS FROM BOX. VERIFY ALL PARTS ARE PRESENT. READ INSTRUCTIONS CAREFULLY BEFORE STARTING INSTALLATION. ASSISTANCE IS RECOMMENDED. THANK YOU FOR CHOOSING OUR PRODUCT!

These instructions are provided for reference only. We strongly recommend installation by a professional installer for the best results. We are not responsible for any damage caused during installation.

***ROCKER PANEL MOUNT**

***NO DRILLING REQUIRED**

Torque Value

Fastener Size	Tightening Torque (ft-lbs)	Required
6mm	6-7	√
8mm	16-18	√
10mm	31-32	√
12mm	56-58	X
14mm	92-94	X



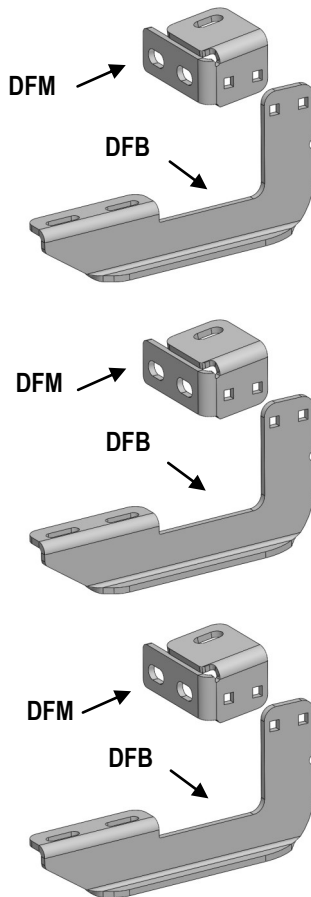
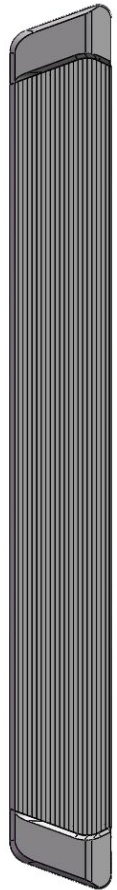
Scan for
Installation Video

Mounting Bracket List			
Item	QTY	Bracket Label	Description
1#	3	DFM	Mounting Brackets for Driver Front / Center / Rear
2#	3	DFB	Bar Brackets for Driver Front / Center / Rear
3#	3	PFM	Mounting Brackets for Passenger Front / Center / Rear
4#	3	PFB	Bar Brackets for Passenger Front / Center / Rear

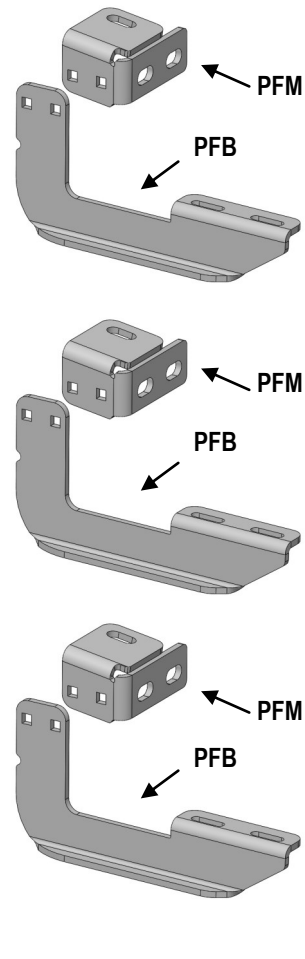
PART LIST

Front
↑

Driver



Passenger





Scan for
Installation Video

Hardware Package A (For Bracket Installation)

Item	QTY	Description	Item	QTY	Description
A1	6	M10X1.5-30mm Hex Bolts	A7	12	M8 Lock Washers
A2	6	M10 Large Flat Washers	A8	12	M8X1.25 Hex Nuts
A3	6	M10 Lock Washers	A9	12	M8X1.25-25 Carriage Bolts
A4	6	M10 Clip Nuts	A10	12	M8 Flat Washers
A5	12	M8X1.25-25mm Hex Bolts	A11	12	M8X1.25 Nylon Lock Nuts
A6	24	M8 Large Flat Washers			



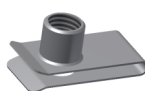
A1



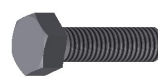
A2



A3



A4



A5



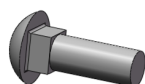
A6



A7



A8



A9



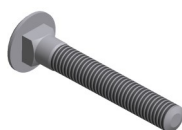
A10



A11

Hardware Package B (For Step Bar Installation)

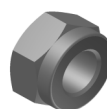
Item	QTY	Description	Item	QTY	Description
B1	12	M6X1-20 Carriage Bolts	B3	12	M6X1 Nylon Lock Nuts
B2	12	M6 X-Large Flat Washers			



B1



B2



B3



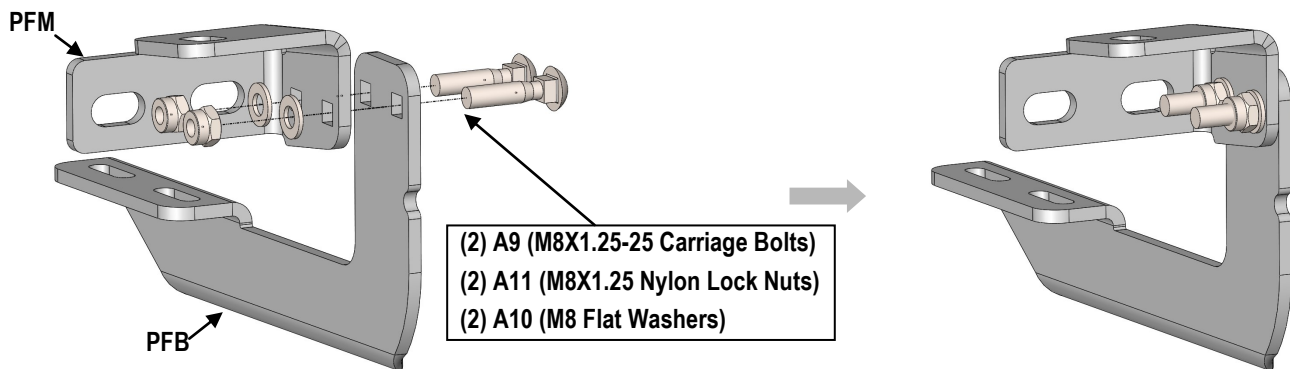
STEP 1: Assemble Passenger Side Mounting Brackets

(1) Assemble Passenger Front Mounting Brackets (**PFM+PFB**) (Fig 1) with:

- (2) A9 (M8X1.25-25 Carriage Bolts)
- (2) A11 (M8X1.25 Nylon Lock Nuts)
- (2) A10 (M8 Flat Washers)

(2) Repeat to assemble the remaining (2) Mounting Brackets (**PFMs+ PFBs**) for passenger Center & Rear.

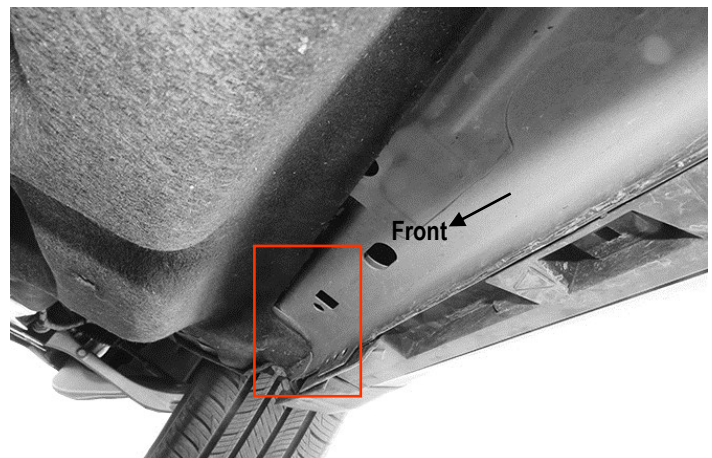
Note: The (3) Assembled Mounting Brackets (PFM+PFB) are universal for Mounting on Passenger Side.



(Fig 1) Passenger Side Mounting Bracket (PFM+PFB) Assembly

STEP 2: Locate Passenger Side Mounting Locations

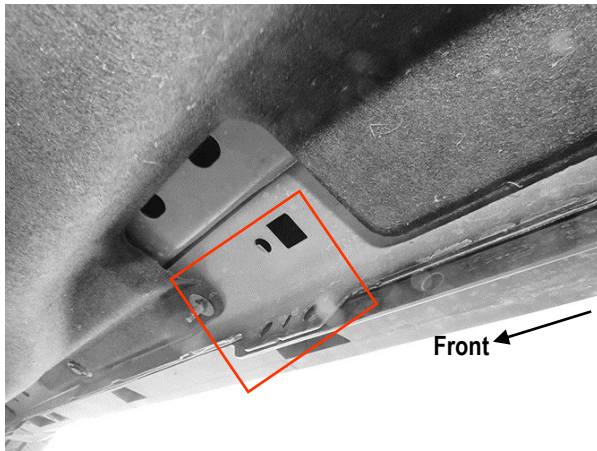
- (1) Start installation from the passenger side front of the vehicle, temporarily remove the plastic side panel.
- (2) Along the body panel, locate the typical square hole and a small round hole at the bottom of the body panel, and (2) round holes in the pinch weld (**Figs 2-4**). The mounting brackets will bolt to the round holes.



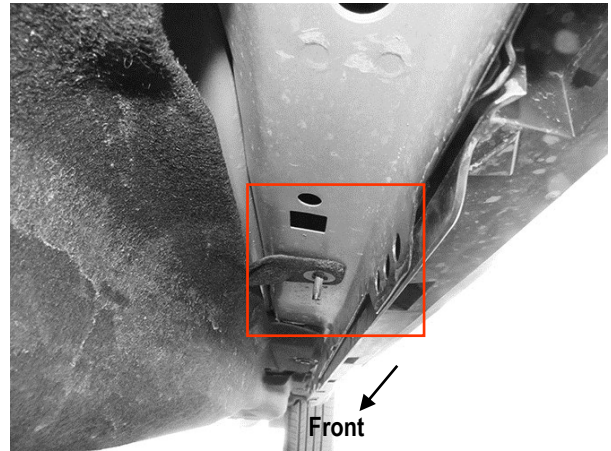
(Fig 2) Passenger Side Front Mounting Location



(3) Move to the Passenger Side Center & Rear Mounting Locations, (Figs 3 & 4).
Do not fully tighten hardware at this time.



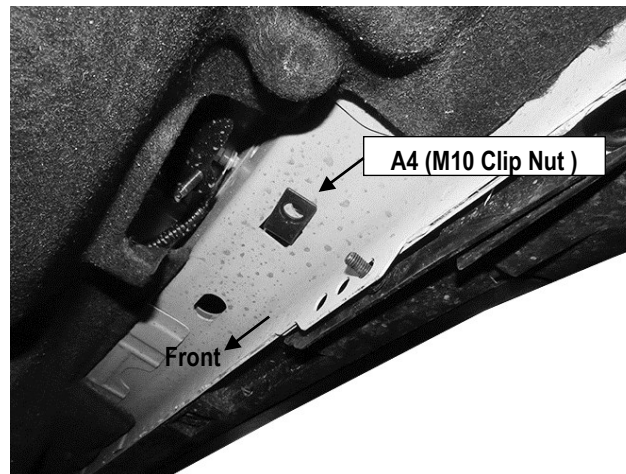
(Fig 3) Passenger Side Center Mounting Location



(Fig 4) Passenger Side Rear Mounting Location

STEP 3: Install M10 Clip Nut

Insert (1) A4 (M10 Clip Nut) to each square hole on the body panel, and line up the nut with each round hole, (Fig 5).



(Fig 5) Install The M10 Clip Nut



STEP 4: Install Passenger Front Mounting Bracket

(1) Attach (1) Passenger Front Mounting Bracket (**PFM+PFB**) to the installed M10 Clip Nut (**Figs 6-7**) with:

- (1) A1 (M10X1.5-30mm Hex Bolt)
- (1) A3 (M10 Lock Washer)
- (1) A2 (M10 Large Flat Washer)

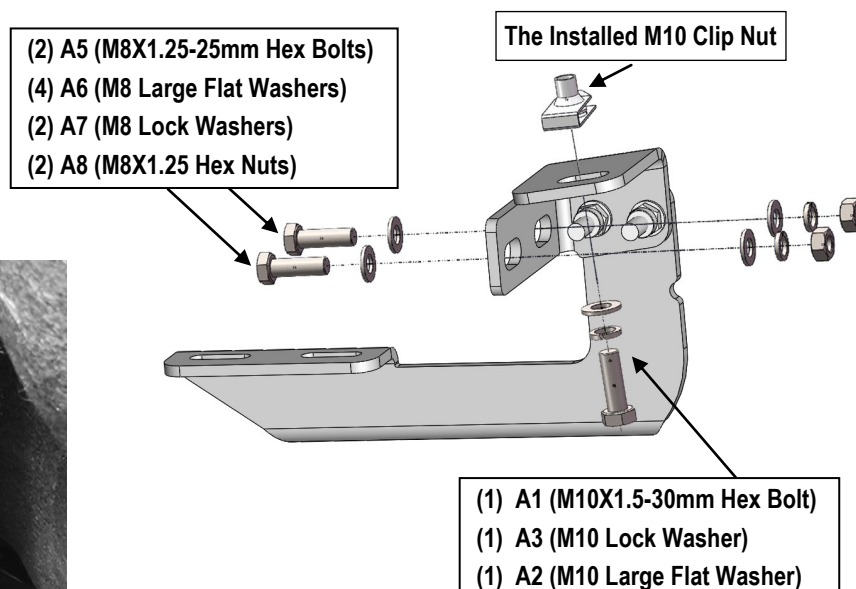
(2) Attach the Passenger Front Mounting Bracket (**PFM+PFB**) to the pinch weld with:

- (2) A5 (M8X1.25-25mm Hex Bolts)
- (4) A6 (M8 Large Flat Washers)
- (2) A7 (M8 Lock Washers)
- (2) A8 (M8X1.25 Hex Nuts)

Do not fully tighten hardware at this time.



(Fig 6) Passenger Front Mounting Bracket Installed



(Fig 7) Passenger Front Mounting Bracket Installation

STEP 5: Install Passenger Center & Rear Mounting Brackets

Move to the Passenger Side Center & Rear Mounting Locations (**Figs 3&4**).

Repeat **Step 4** to install the Assembled Passenger Center & Rear Mounting Brackets (**PFM+PFB**).

Do not fully tighten hardware at this time.



STEP 6: Install T-Bolts to the Passenger Running Board

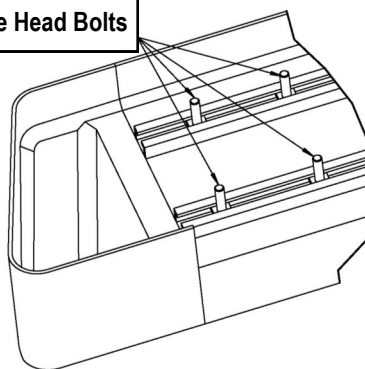
Once all (3) Passenger side mounting brackets are installed, then proceed to the Running Board installation (**Figs 8-9**).

- Select a Running Board. Slip (3) B1(M6X1-20mm Square Head Bolts) into each bottom channel (**Fig 8**).
- Carefully position the Running Board onto the (3) Mounting Brackets.
- Attach the Running Board to each Mounting Bracket with (**Fig 9**):
 - (2) B1 (M6X1-20mm Square Head Bolts)
 - (2) B2 (M6 Large Flat Washers)
 - (2) B3 (M6 Nylon Lock Nuts)

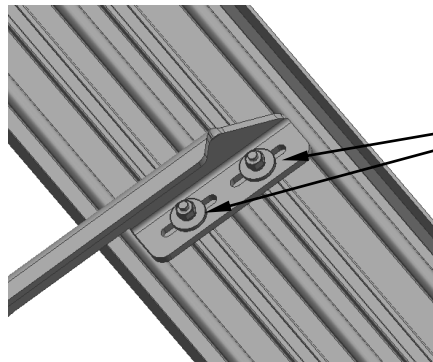
Note: Do not fully tighten at this time.

Do not slide the Running Board on the Brackets or the bottom surface of the board will be damaged.

M6X1-20mm Square Head Bolts



(Fig 8) Slip M6X1-20mm Square Head Bolts Into The Bottom Channels



- (2) B1 (M6X1-20mm Square Head Bolts)
- (2) B2 (M6 Large Flat Washers)
- (2) B3 (M6 Nylon Lock Nuts)

(Fig 9) Running Board Installed Onto Mounting Bracket



STEP 7: Passenger Side Running Board Adjustment

- Level and adjust the Running Board properly.
- Tighten all 6mm hardware with 6-7 ft-lbs torque, 8mm hardware with 16-18 ft-lbs torque and 10mm hardware with 31-32 ft-lbs torque.

STEP 8: The Other Side Running Board Installation

Move to the other side of the vehicle. Repeat **Steps 1-7** for the other Running Board bar installation.

Attention

Do periodic inspections to the installation to make sure that all hardware is secure and tight.
In order to protect your bars/boards, please use mild soap/non-abrasive products for cleaning only.