

# iBoard®



Scan for  
Installation Video

## iBoard® by APS

PART#: IB-P923Y&H

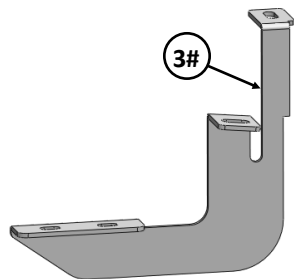
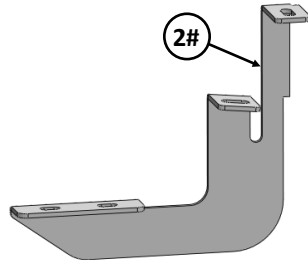
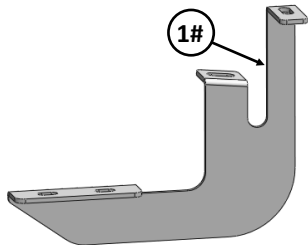
READ INSTRUCTIONS CAREFULLY BEFORE STARTING INSTALLATION. REMOVE CONTENTS FROM BOX AND VERIFY ALL PARTS ARE PRESENT. ASSISTANCE IS RECOMMENDED.

\*ROCKER PANEL MOUNT  
\*NO DRILLING REQUIRED

Fastener Size	Tightening Torque (ft-lbs)	Required
6mm	6-7	X
8mm	16-18	√
10mm	31-32	X
12mm	56-58	X
14mm	92-94	X

### PART LIST

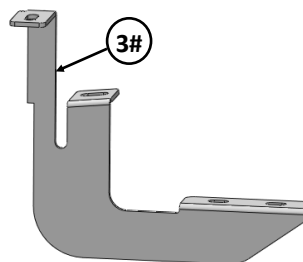
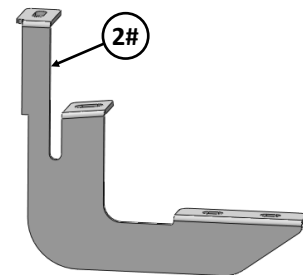
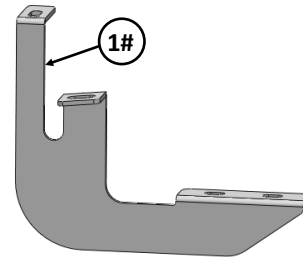
#### Driver Side Step Bar



Front



#### Passenger Side Step Bar

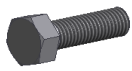


Customer Support: [info@iboardauto.com](mailto:info@iboardauto.com)



## Hardware Package A (For Bracket Installation)

Item	QTY	Description	Item	QTY	Description
1#	2	Driver / Passenger Front Mounting Brackets	5#	18	M8 Large Flat Washers
2#	2	Driver / Passenger Center Mounting Brackets	6#	12	M8 Lock Washers
3#	2	Driver / Passenger Rear Mounting Brackets	7#	6	M8 Hex Nuts
4#	12	M8X1.25-25mm Hex Bolts	8#	6	M8 Clip Nuts



4 #



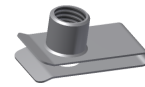
5 #



6 #



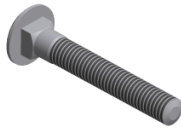
7 #



8 #

## Hardware Package B (For Step Bar Installation)

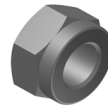
Item	QTY	Description	Item	QTY	Description
1#	12	M8X1.25-35mm Carriage Bolts	3#	12	M8 Nylon Lock Nuts
2#	12	M8 Large Flat Washers	4#	6	Sliders (Packed with Mounting Brackets)



1 #



2 #



3 #



4 #

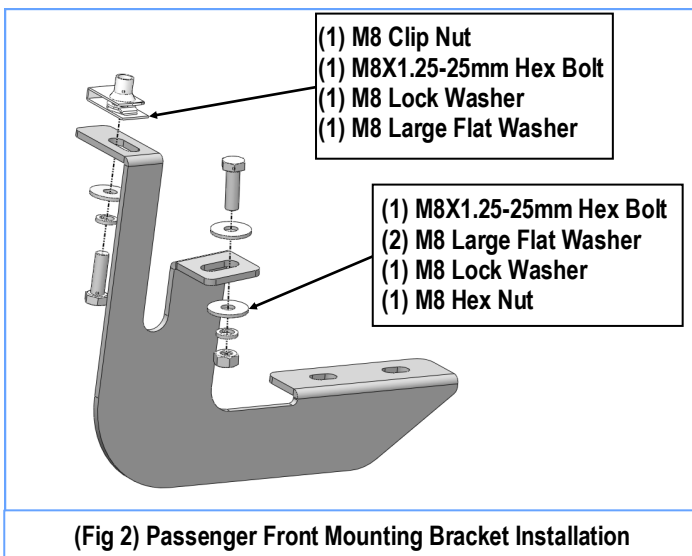
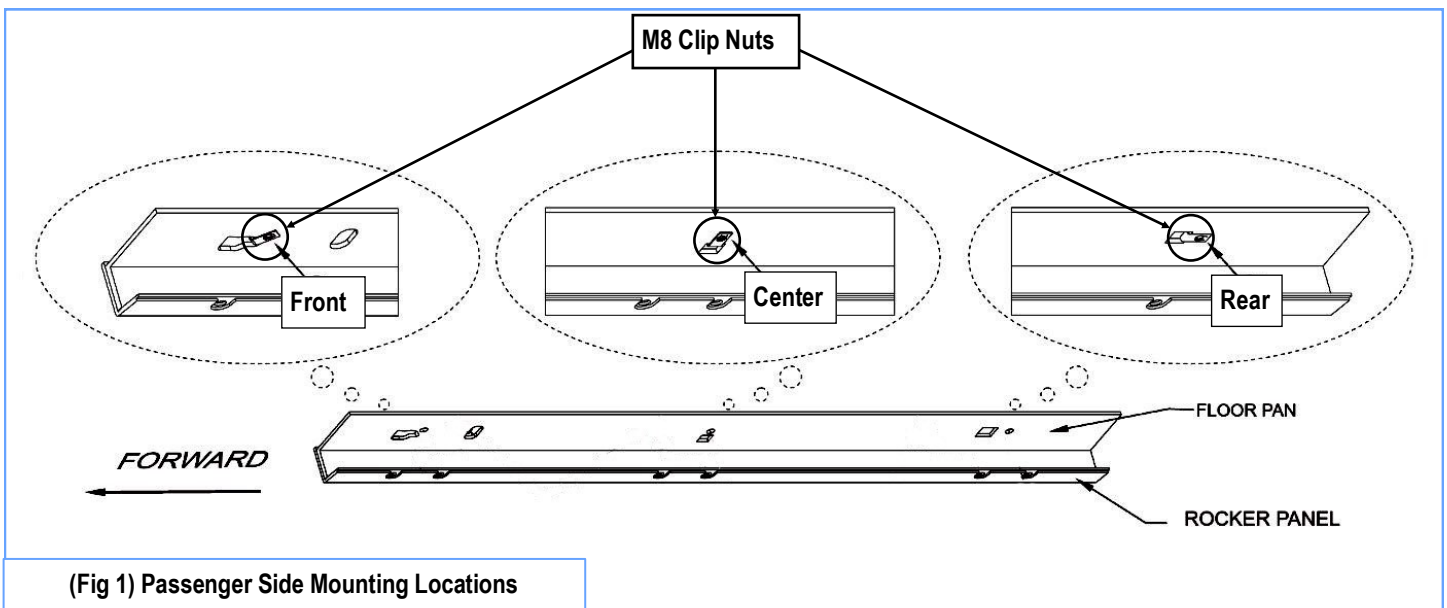


## STEP 1

Starting on the passenger side front of the vehicle. Locate the pair of holes on the bottom of the rocker panel and the square hole next to the round hole on the bottom of the floor pan. Insert M8 Clip Nuts through square hole in floor plan so it is positioned over the round hole, (**Fig 1**).

## STEP 2

Select the Passenger Front Mounting Bracket. Attach the Mounting Bracket to the installed M8 Clip Nut with (1) M8X1.25-25mm Hex Bolt, (1) M8 Lock Washer and (1) M8 Large Flat Washer; to the rocker panel with (1) M8X1.25-25mm Hex Bolt, (2) M8 Large Flat Washers (1) M8 Lock Washer and (1) M8 Hex Nut, (**Fig 2**). Do not fully tighten hardware at this time.



## STEP 3

Next, move to the passenger side center & rear mounting location, (**Fig 1**). Repeat **Steps 1-2** to install the Passenger Center Mounting Bracket & Passenger Rear Mounting Bracket.



## STEP 4

Once all (3) Passenger side mounting brackets are assembled, then proceed to the Step Bar installation. (**Figs 3 & 4**)

(1) Select (1) Slider and (2) M8X1.25-35mm Carriage Bolts;

(2) Install (2) M8X1.25-35mm Carriage Bolts in (1) Slider.

(3) Slide the Slider (with carriage bolts) to the **Step Bar**.

(4) Repeat to install the other (2) sliders to the step bar.

(5) Attach the Step Bar (with the Sliders) onto the installed mounting brackets. Position the Sliders to the installed brackets. Secure the Step Bar to the installed Brackets by using (6) M8 Large Flat Washers and (6) M8 Nylon Lock Nuts and (3) Sliders, (**Fig 4**). Do not fully tighten hardware at this time.

**Note:** The Sliders are packed with the Mounting Brackets.

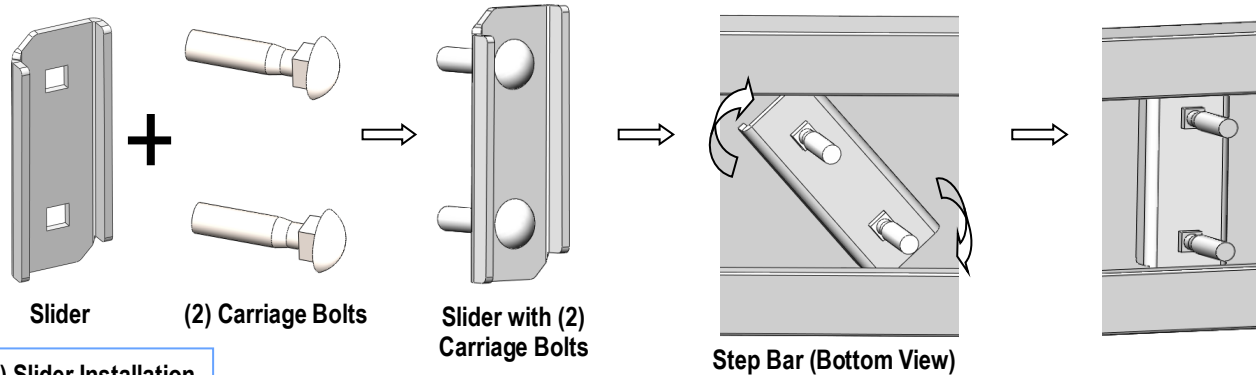
Level and adjust the Step Bar and fully tighten all hardware.

Repeat **Steps 1-4** for the other side Step Bar installation. **The installation is completed!!!**

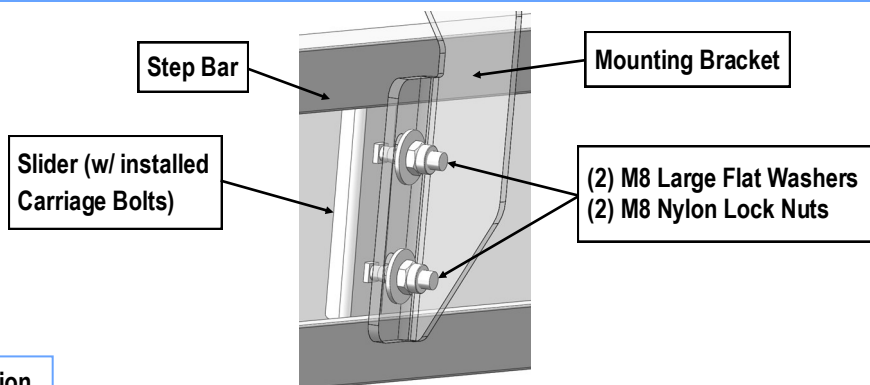
### Attention

**Do periodic inspections to the installation to make sure that all hardware is secure and tight.**

**In order to protect your bars/boards, please use mild soap/non-abrasive products for cleaning only.**



(Fig 3) Slider Installation



(Fig 4) Step Bar Installation