

iBoard®



Scan for
Installation Video

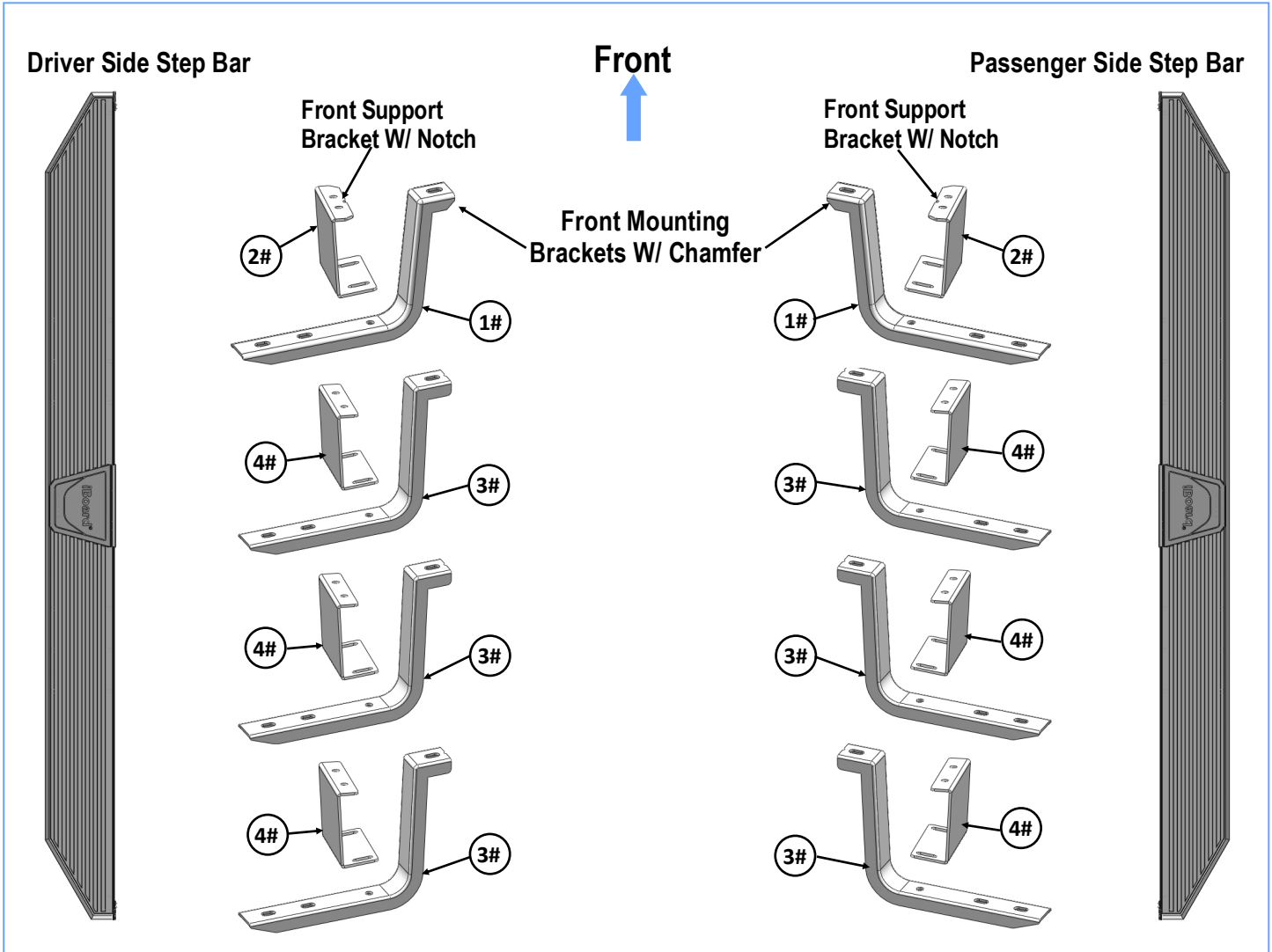
iBoard® by APS

PART#: IB-P922Y&H

READ INSTRUCTIONS CAREFULLY BEFORE STARTING INSTALLATION. REMOVE CONTENTS FROM BOX AND VERIFY ALL PARTS ARE PRESENT. ASSISTANCE IS RECOMMENDED.

*ROCKER PANEL MOUNT
*DRILLING IS REQUIRED

Fastener Size	Tightening Torque (ft-lbs)	Required
6mm	6-7	X
8mm	16-18	√
10mm	31-32	X
12mm	56-58	X
14mm	92-94	X

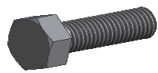


Customer Support: info@iboardauto.com

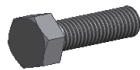


Hardware Package A (For Bracket Installation)

Item	QTY	Description	Item	QTY	Description
1#	2	Driver/Passenger Front Mounting Brackets	6#	24	M8X1.25-20mm Hex Bolts
2#	2	Driver/Passenger Front Support Brackets	7#	54	M8 Flat Washers
3#	6	Driver/Passenger/Center/Rear Mounting Brackets	8#	24	M8 Nylon Lock Nuts
4#	6	Driver/Passenger/Center/Rear Support Brackets	9#	6	M8 Clip Nuts
5#	6	M8X1.25-25mm Hex Bolts	10#	2	ST6.3-25mm Hex Self Tapping Screws



5 #



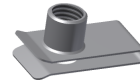
6 #



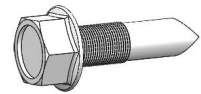
7 #



8 #



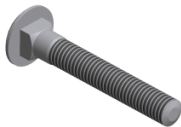
9 #



10 #

Hardware Package B (For Step Bar Installation)

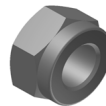
Item	QTY	Description	Item	QTY	Description
1#	16	M8X1.25-35mm Carriage Bolts	3#	16	M8 Nylon Lock Nuts
2#	16	M8 Large Flat Washers	4#	8	Sliders (Packed with Mounting Brackets)



1 #



2 #



3 #

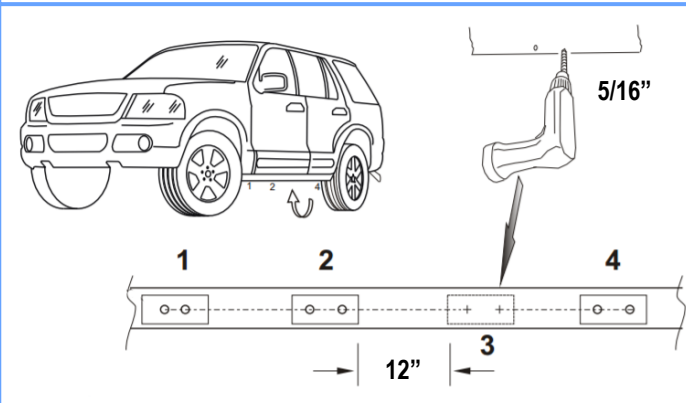


4 #



STEP 1

Start installation at the driver side of the vehicle, Remove splash guard from underside of vehicle. Drill 5/16" holes on the 3rd mounting location, (Fig 1).

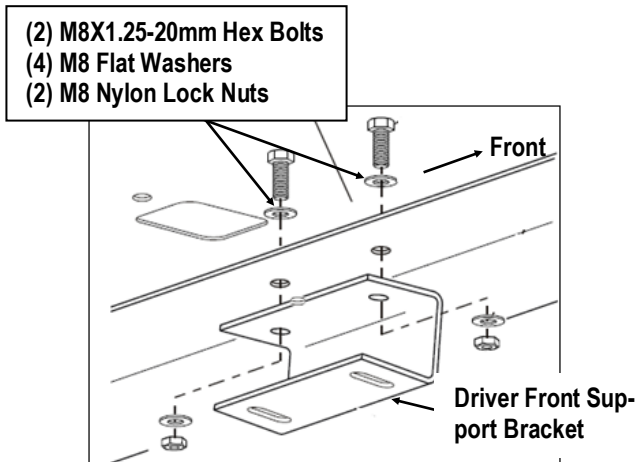


(Fig 1) Driver Side Mounting Locations

STEP 2

Attach the Driver Front Support Bracket to the 1st Mounting Location with (2) M8X1.25-20mm Hex Bolts, (4) M8 Flat Washers and (2) M8 Nylon Lock Nuts, (Fig 1). Don't fully tighten the hardware at this time.

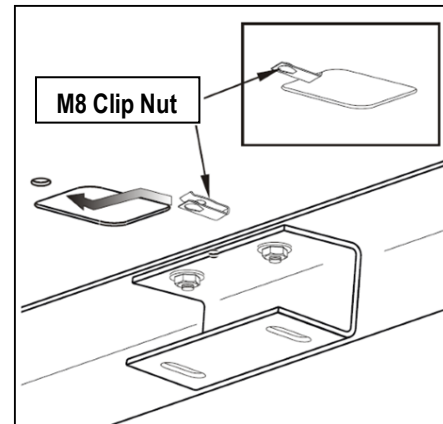
Note: The (2) Front Support Brackets are different with (6) Center and Rear Support Brackets.



(Fig 2) Driver Front Support Bracket Installation

STEP 3

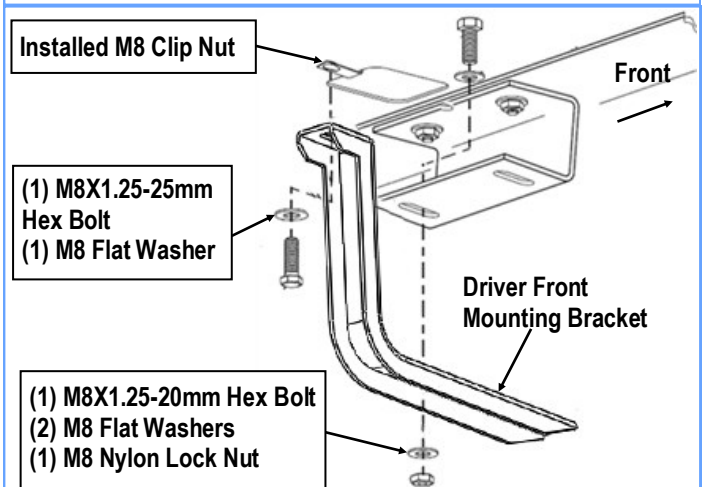
Select (1) M8 Clip Nut. Line up the Clip Nut with the round hole beside the support bracket, (Fig 3).



(Fig 3) M8 Clip Nut Installed

STEP 4

Attach the upper mounting hole of the Driver Front Mounting Bracket to the installed M8 Clip Nut and mount the lower hole to the installed Driver Front Support Bracket with (2) M8X1.25-25mm Hex Bolts, (3) M8 Flat Washers, (1) M8 Nylon Lock Nut (Fig 4). Don't fully tighten hardware at this time.



(Fig 4) Driver Front Mounting Bracket Installation



STEP 5

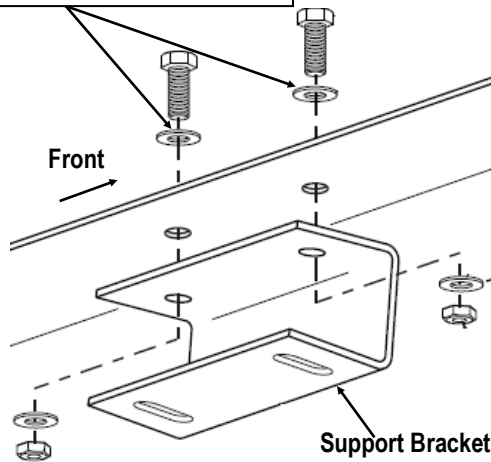
Move to the **Mounting locations 2 & 4**. Repeat **Steps 2-4** to install Support Brackets and Mounting Brackets. Do not fully tighten at this time.

STEP 6

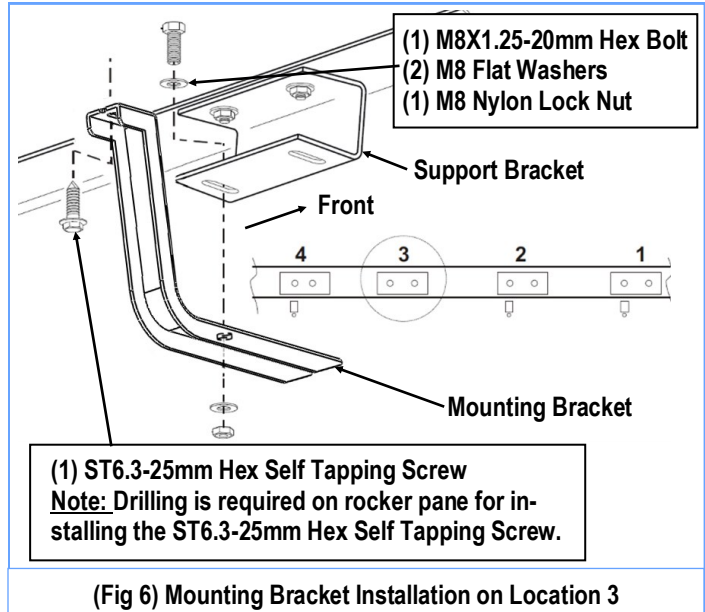
Move to the **location 3**. Drill (2) 5/16" holes on pinch weld, (**Fig 1**). And then attach (1) Center Support Bracket to the drilled holes with (2) M8X1.25-20mm Hex Bolts, (4) M8 Flat Washers, (2) M8 Nylon Lock Nuts, (**Fig 5**).

Attach (1) Center Mounting Bracket to the installed Center Support Bracket with (1) M8X1.25-20mm Hex Bolt, (2) M8 Flat Washers, (1) M8 Nylon Lock Nut, (**Fig 6**). Adjust the Center Mounting Bracket properly. Mark and drill (1) 6mm hole on rocker panel. Attach the mounting Bracket to the drilled hole with (1) ST6.3-25mm Hex Self tapping Screw, (**Fig 6**).

(2) M8X1.25-20mm Hex Bolts
(4) M8 Flat Washers
(2) M8 Nylon Lock Nuts



(Fig 5) Support Bracket Installation on Location 3



(Fig 6) Mounting Bracket Installation on Location 3

STEP 7

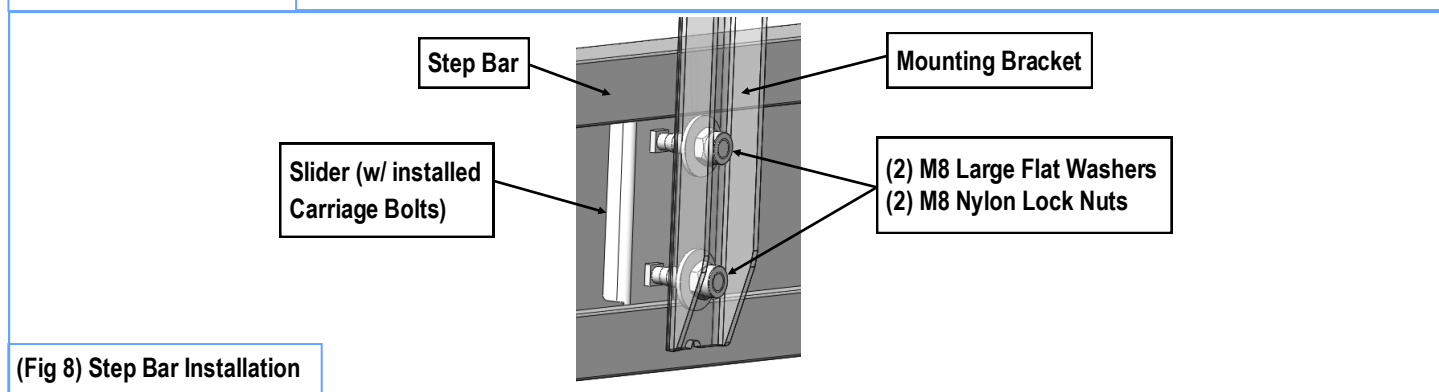
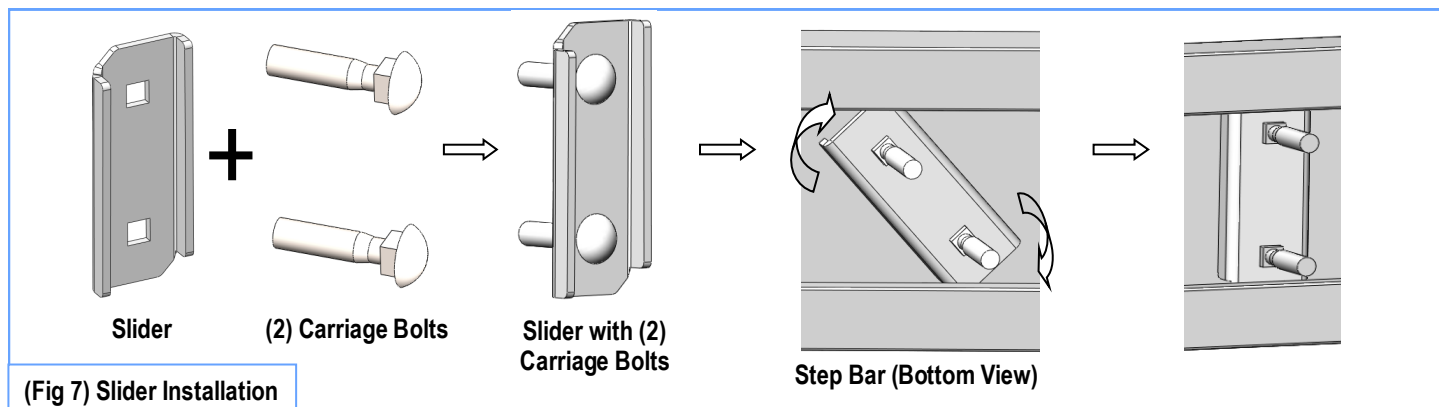
Once all (4) Driver side mounting brackets are installed, then proceed to the Step Bar installation. (**Figs 7 & 8**)

- (1) Select (1) Slider and (2) M8X1.25-35mm Carriage Bolts;
- (2) Install (2) M8X1.25-35mm Carriage Bolts in (1) Slider.
- (3) Slide the Slider (with carriage bolts) to the **Step Bar**.
- (4) Repeat to install the other (3) sliders to the step bar.
- (5) Attach the Step Bar (with the Sliders) onto the installed mounting brackets. Position the Sliders to the installed brackets. Secure the Step Bar to the installed Brackets by using (8) M8 Large Flat Washers and (8) M8 Nylon Lock Nuts and (4) Sliders, (**Fig 8**). Do not fully tighten hardware at this time.

Note: The Sliders are packed with the Mounting Brackets.

Level and adjust the Step Bar and fully tighten all hardware.

Repeat **Steps 1-7** for the other side Step Bar installation. **The installation is completed!!!**



Attention

Do periodic inspections to the installation to make sure that all hardware is secure and tight.
In order to protect your bars/boards, please use mild soap/non-abrasive products for cleaning only.