



iBoard® Series

INSTALLATION INSTRUCTIONS

PART#: IB-R912

BEFORE INSTALLATION

REMOVE CONTENTS FROM BOX. VERIFY ALL PARTS ARE PRESENT. READ INSTRUCTIONS CAREFULLY BEFORE STARTING INSTALLATION. ASSISTANCE IS RECOMMENDED. THANK YOU FOR CHOOSING OUR PRODUCT!

These instructions are provided for reference only. We strongly recommend installation by a professional installer for the best results. We are not responsible for damage caused by improper installation or misuse.

***ROCKER PANEL MOUNT**

***NO DRILLING REQUIRED**

Recommended Torque Values

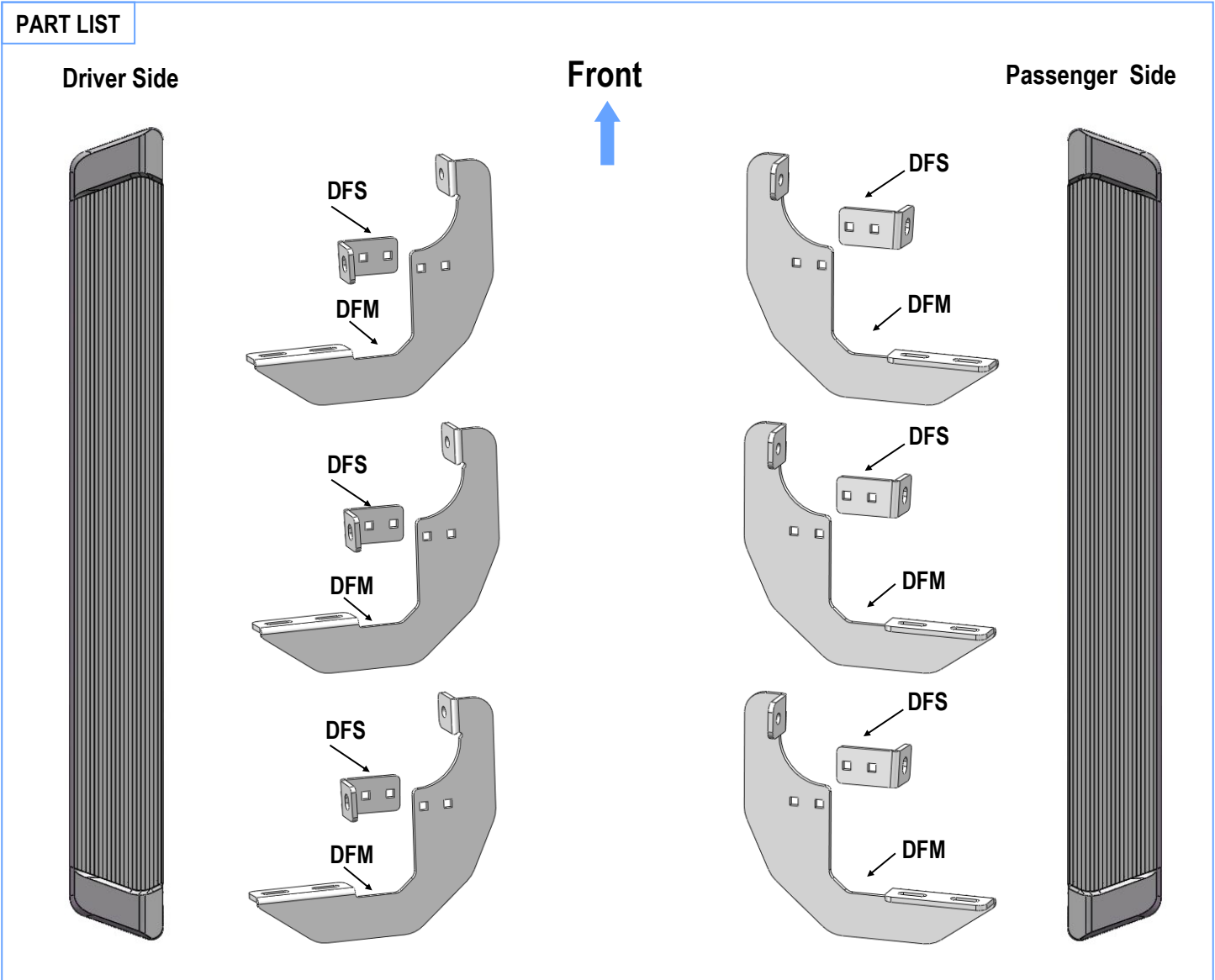
Fastener Size	Tightening Torque (ft-lbs)	Torque Wrench Required (Yes/No)
6mm	6-7	Yes
8mm	16-18	Yes
10mm	31-32	Yes
12mm	56-58	No
14mm	92-94	No



Scan for
Installation Video

Mounting Bracket List			
Item	QTY	Bracket Label	Description
1#	6	DFM	Mounting Bracket for Driver / Passenger Side
2	6	DFS	Support Bracket for Driver / Passenger Side

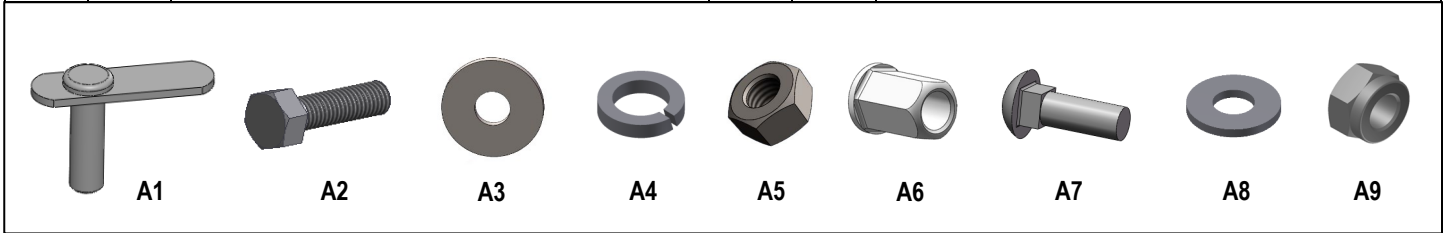
PART LIST



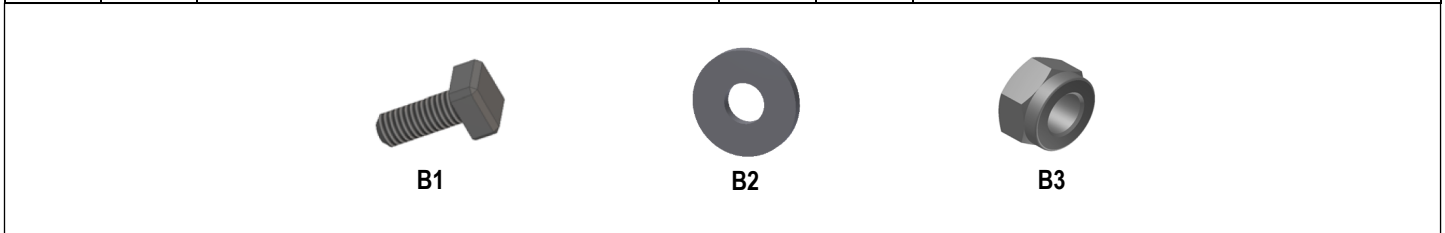


Scan for
Installation Video

Hardware Package A (For Bracket Installation)					
Item	QTY	Description	Item	QTY	Description
A1	6	M10X35 Bolt Plates	A6	6	M10 Rivet Nuts
A2	6	M10X1.5-25mm Hex Bolts	A7	12	M8X1.25-25 Carriage Bolts
A3	12	M10 Flat Washers	A8	12	M8 Flat Washers
A4	12	M10 Lock Washers	A9	12	M8X1.25 Nylon Lock Nuts
A5	6	M10X1.5 Hex Nuts			



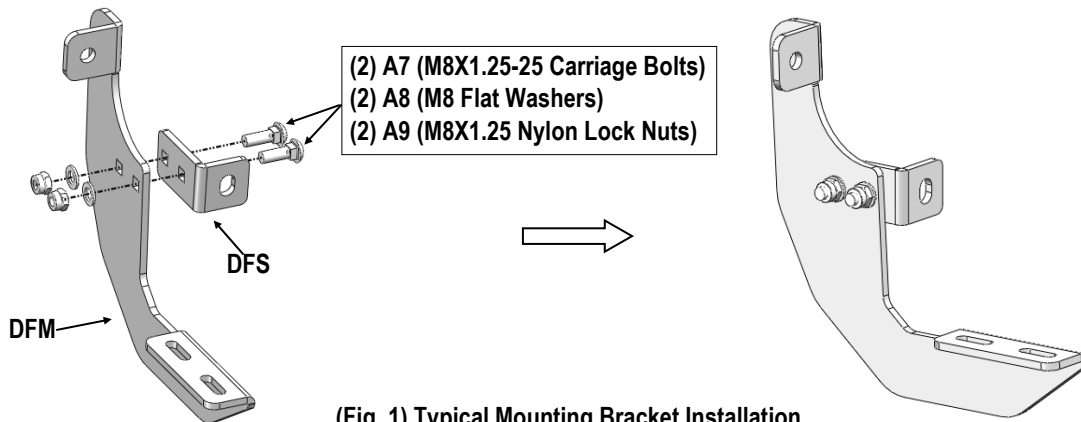
Hardware Package B (For Step Bar Installation)					
Item	QTY	Description	Item	QTY	Description
B1	12	M6X1-20mm Square Head Bolts	B3	12	M6 Nylon Lock Nuts
B2	12	M6 Large Flat Washers			





STEP 1: Assemble Mounting Brackets

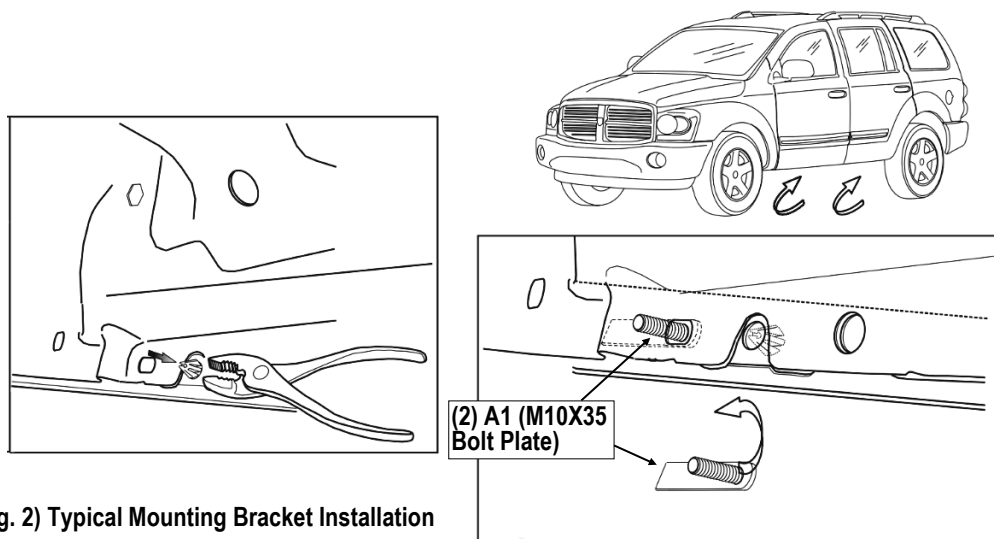
- Assemble Driver Front Mounting Bracket (**DFM+DFS**) with:
 - (2) A7 (M8X1.25-25 Carriage Bolts)
 - (2) A8 (M8 Flat Washers)
 - (2) A9 (M8X1.25 Nylon Lock Nuts)
- Repeat this procedure to assemble remaining Mounting Brackets (**DFM+DFS**).
- Note: All (6) **DFMs** are Universal; All (6) **DFSs** are Universal.



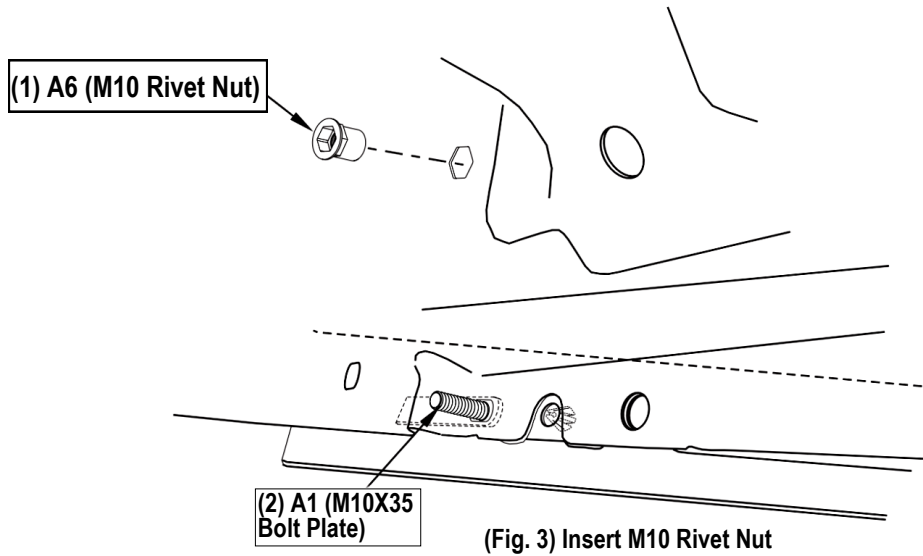
(Fig. 1) Typical Mounting Bracket Installation

STEP 2: Locate Driver Side Mounting Positions

- Separate trim from rocker panel to insert (1) A1 (M10x35 Bolt Plate) as shown (**Figs. 2-3**) on driver side front of the vehicle.
- Insert (1) A6 (M10 Rivet Nut) to a hex hole on rocker panel as shown (**Fig. 3**).



(Fig. 2) Typical Mounting Bracket Installation



STEP 3: Install Mounting Brackets

(1) Attach (1) assembled Mounting Bracket to the inserted A6 (M10 Rivet Nut) with **(Fig. 4)** :

- (1) A2 (M10X1.5-25mm Hex Bolt)
- (1) A4 (M10 Lock Washer)
- (1) A3 (M10 Flat Washer)

(2) Attach the assembled Mounting Bracket to the installed A1 (M10X35 Bolt Plate) with **(Fig. 4)** :

- (1) A3 (M10 Flat Washer)
- (1) A4 (M10 Lock Washer)
- (1) A5 (M10 Hex Nut)

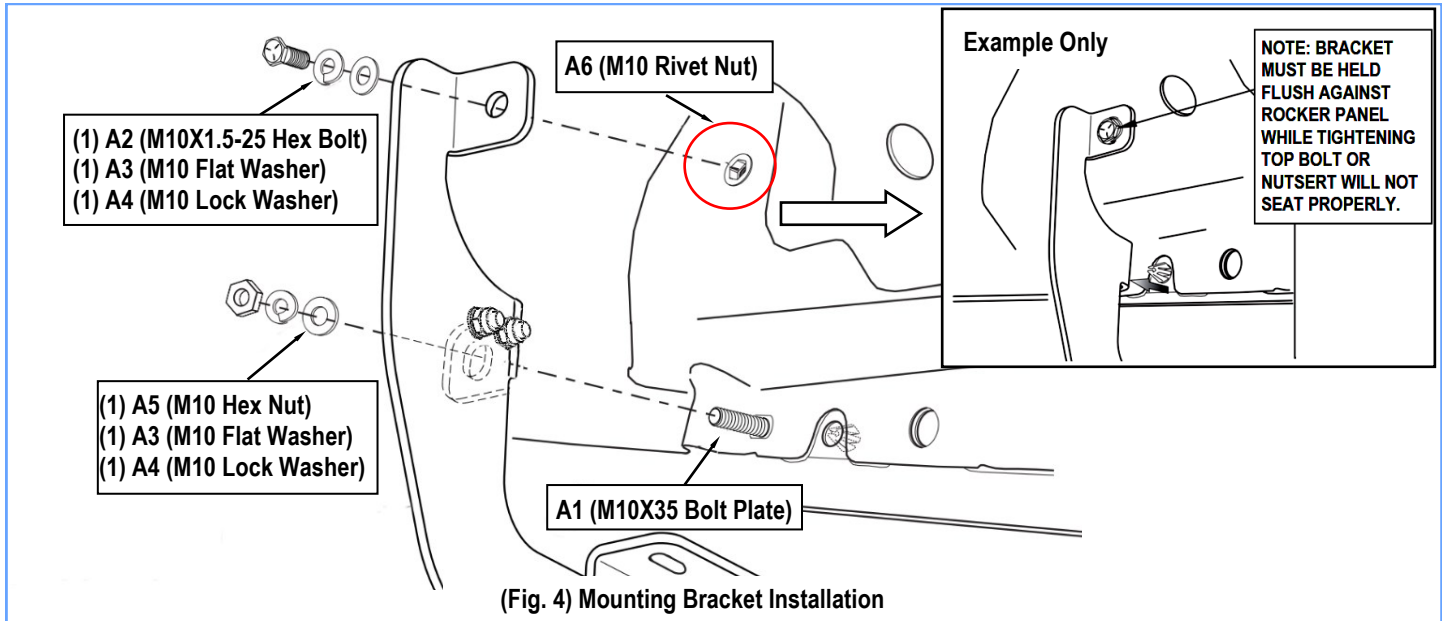
Note: Do not fully tighten hardware at this stage.

(3) Tighten top bolt to crimp Rivet Nut until increased resistance is felt. Verify M10 Rivet Nut is not loose in hole, otherwise re-tighten.

Note: BRACKET MUST BE HELD FLUSH AGAINST ROCKER PANEL WHILE TIGHTENING TOP BOLT OR THE M10 RIVET NUT WILL NOT SEAT PROPERLY.

(4) Hold the M10x35 Bolt Plate parallel to rocker panel and tighten bottom nut. Re-attach trim panel.

(5) Repeat to install remaining (2) driver side mounting brackets **(Fig.4)**.



STEP 4: Driver Side Step Bar Installation

Once all (3) Driver side mounting brackets are installed, then proceed to the Running Board installation (Figs. 5-6).

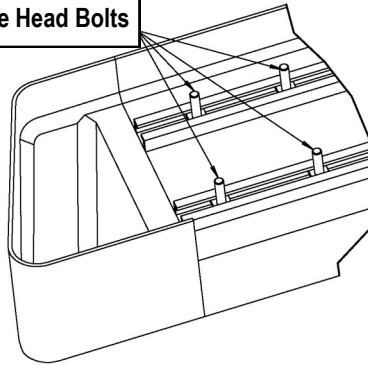
- Select a Running Board. Slip (2) B1 (M6X1-20mm Square Head Bolts) into each bottom channel (Fig. 5).
- Carefully position the Running Board onto the (3) Mounting Brackets.
- Attach the Running Board to each Mounting Bracket with (Fig. 6):
 - (2) B1 (M6X1-20mm Square Head Bolts)
 - (2) B2 (M6 Large Flat Washers)
 - (2) B3 (M6 Nylon Lock Nuts)

Note: Do not fully tighten hardware at this time.

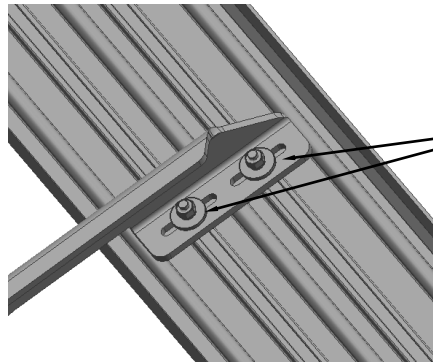
IMPORTANT: Do not slide the Running Board on the Brackets or the bottom surface of the board will be damaged.



M6X1-20mm Square Head Bolts



(Fig. 5) Slip M6X1-20mm Square Head Bolts Into The Bottom Channels



(2) B1 (M6X1-20mm Square Head Bolts)
(2) B2 (M6 Large Flat Washers)
(2) B3 (M6 Nylon Lock Nuts)

(Fig. 6) Running Board Installed Onto Mounting Bracket

STEP 5: Driver Side Running Board Adjustment

- Level and adjust the Running Board properly.
- Tighten all 6mm hardware with 6-7 ft-lbs torque. Tighten all 8mm hardware with 16-18 ft-lbs torque.
- Tighten all 10mm hardware with 31-32 ft-lbs torque.

Important: Please follow the recommended Tightening Torques shown in the table on page 1.

Don't over tighten, or the nuts/bolts will be damaged.

STEP 6: The Other Side Running Board Installation

Move to the other side of the vehicle. Repeat **Steps 1-5** for the other Running Board installation.

Attention

- Do periodic inspections to the installation to make sure that all hardware is secure and tight.
- In order to protect your bars/boards, please use mild soap/non-abrasive products for cleaning only.