



iBoard® Series

INSTALLATION INSTRUCTIONS

PART#: IB-R361

BEFORE INSTALLATION

REMOVE CONTENTS FROM BOX. VERIFY ALL PARTS ARE PRESENT. READ INSTRUCTIONS CAREFULLY BEFORE STARTING INSTALLATION. ASSISTANCE IS RECOMMENDED. THANK YOU FOR CHOOSING OUR PRODUCT!

These instructions are provided for reference only. We strongly recommend installation by a professional installer for the best results. We are not responsible for any damage caused during installation.

***ROCKER PANEL MOUNT**

***NO DRILLING REQUIRED**

Torque Value

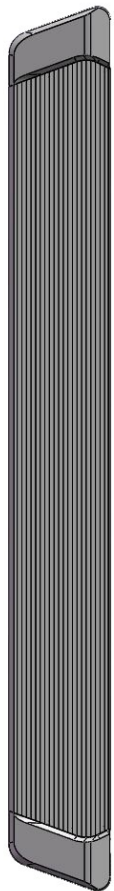
Fastener Size	Tightening Torque (ft-lbs)	Required
6mm	6-7	√
8mm	16-18	√
10mm	31-32	√
12mm	56-58	X
14mm	92-94	X



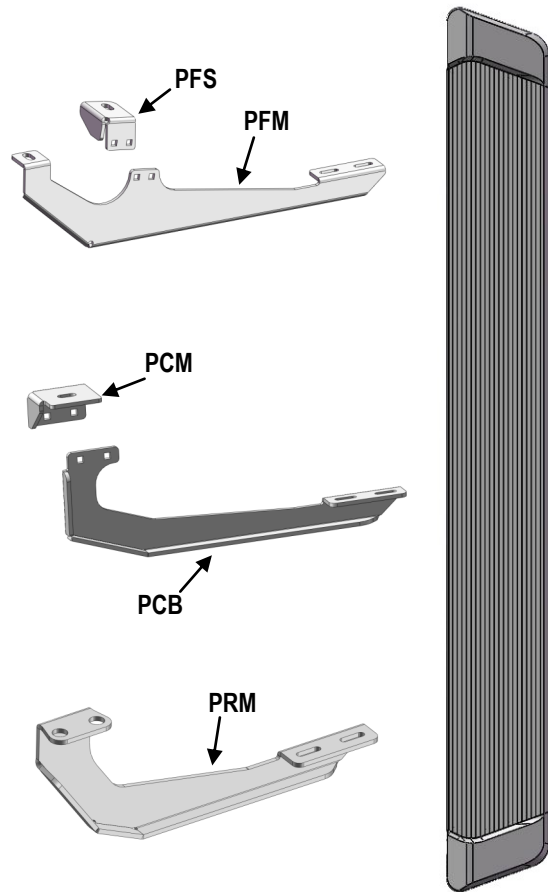
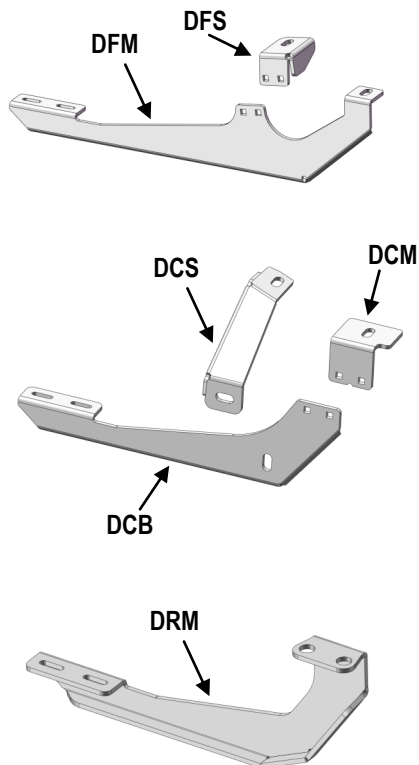
Mounting Bracket List							
Item	QTY	Bracket Label	Description	Item	QTY	Bracket Label	Description
1#	1	DFM	Mounting Bracket for Driver Front	7#	1	PFM	Mounting Bracket for Passenger Front
2#	1	DFS	Support Bracket for Driver Front	8#	1	PFS	Support Bracket for Passenger Front
3#	1	DCM	Mounting Bracket for Driver Center	9#	1	PCM	Mounting Bracket for Passenger Center
4#	1	DCB	Bar Bracket for Driver Center	10#	1	PCB	Bar Bracket for Passenger Center
5#	1	DCS	Support Bracket for Driver Center	11#	1	PRM	Mounting Bracket for Passenger Rear
6#	1	DRM	Mounting Bracket for Driver Rear				

PART LIST

Front



Driver Side



Passenger Side

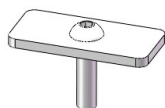


Hardware Package A (For Bracket Installation)

Item	QTY	Description	Item	QTY	Description
A1	5	M10 L Bolt Plates	A6	8	M10 Lock Washers
A2	2	M10 T Bolt Plates	A7	8	M10 Hex Nuts
A3	7	M10 Plastic Washers	A8	8	M8X1.25-25 Carriage Bolts
A4	1	M10X1.5-30mm Hex Bolt	A9	8	M8 Flat Washers
A5	9	M10 Large Flat Washers	A10	8	M8 Nylon Lock Nuts



A1



A2



A3



A4



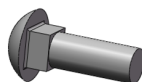
A5



A6



A7



A8



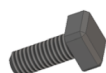
A9



A10

Hardware Package B (For Step Bar Installation)

Item	QTY	Description	Item	QTY	Description
B1	12	M6X1-20mm Square Head Bolts	B3	12	M6 Nylon Lock Nuts
B2	12	M6 X-Large Flat Washers			



B1



B2



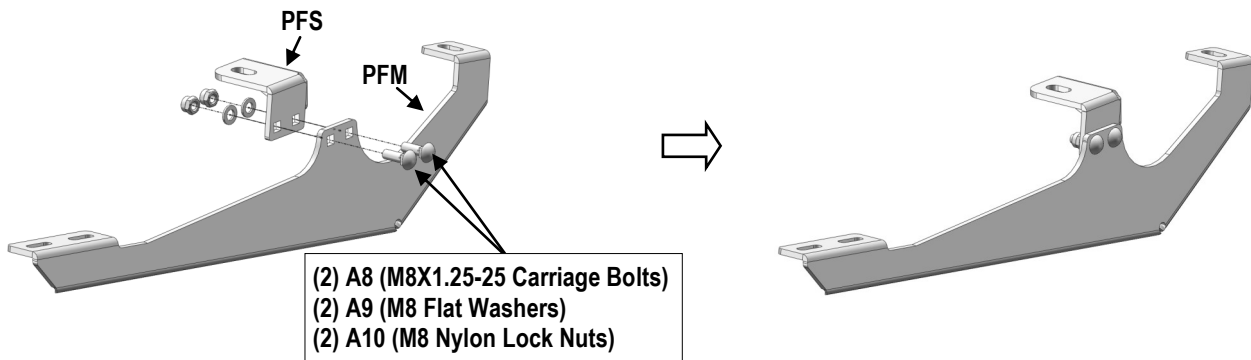
B3



STEP 1: Assemble Passenger Front Mounting Bracket

Assemble Passenger Front Mounting Bracket (PFM+PFS) (See Fig 1) with:

- (2) A8 (M8X1.25-25 Carriage Bolts)
- (2) A9 (M8 Flat Washers)
- (2) A10 (M8 Nylon Lock Nuts)

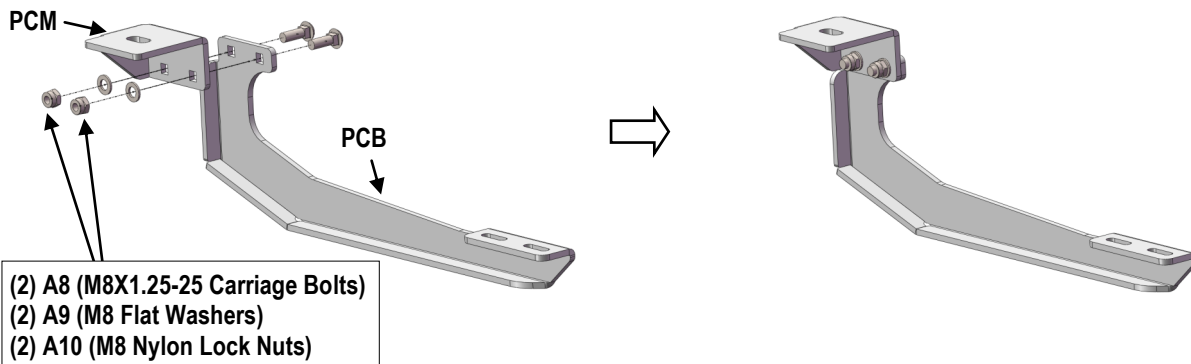


(Fig 1) Passenger Front Mounting Brackets Assembly

STEP 2: Assemble Passenger Center Mounting Bracket

Assemble Passenger Center Mounting Bracket (PCM+PCB) (See Fig 2) with:

- (2) A8 (M8X1.25-25 Carriage Bolts)
- (2) A9 (M8 Flat Washers)
- (2) A10 (M8 Nylon Lock Nuts)



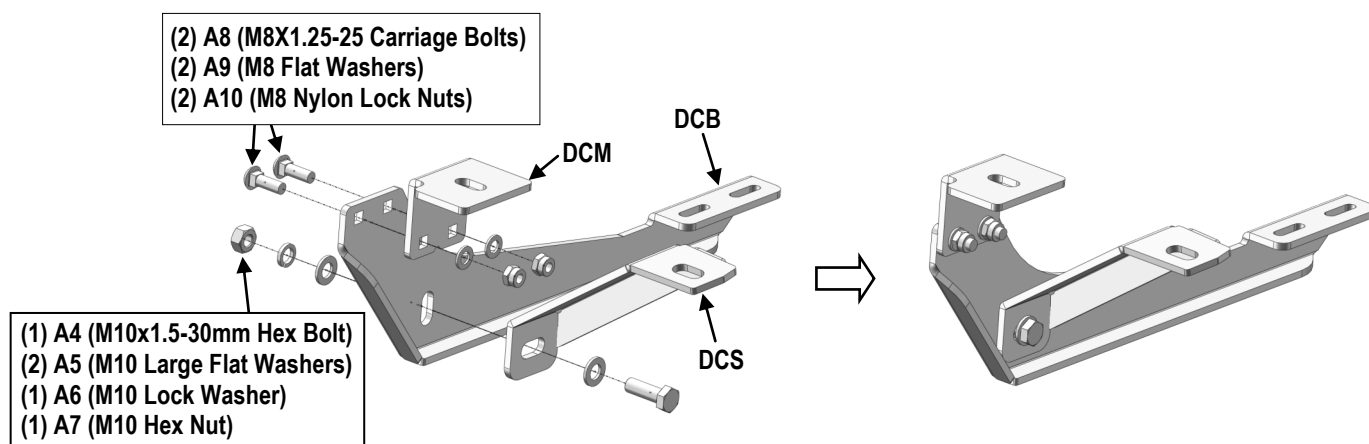
(Fig 2) Passenger Center Mounting Brackets Assembly



STEP 3: Assemble Driver Center Mounting Bracket

Assemble Driver Center Mounting Bracket (DCM+DCB+DCS) (See Fig 3) with:

- (2) A8 (M8X1.25-25 Carriage Bolts)
- (2) A9 (M8 Flat Washers)
- (2) A10 (M8 Nylon Lock Nuts)
- (1) A4 (M10x1.5-30mm Hex Bolt)
- (2) A5 (M10 Large Flat Washers)
- (1) A6 (M10 Lock Washer)
- (1) A7 (M10 Hex Nut)



(Fig 3) Driver Center Mounting Bracket Assembly

STEP 4: Locate Passenger Front Mounting Position

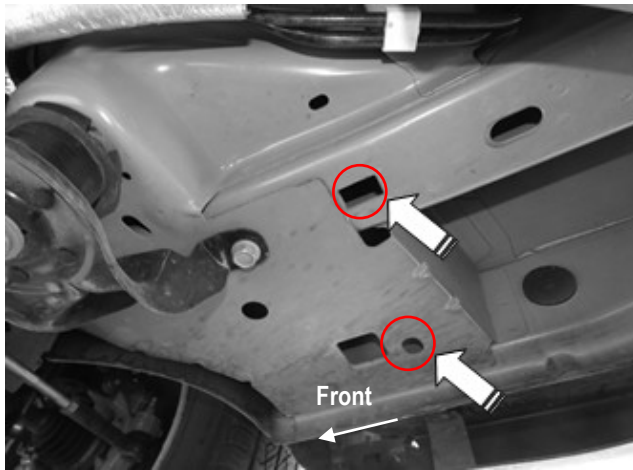
- (1) Locate the factory holes at the bottom of the Passenger Front Floor Panel. (See Fig 4)
- (2) Select (2) A1 (M10 L Bolt Plates) and (2) A3 (M10 Plastic Washers). Partially thread the Plastic Washers onto the M10 L Bolt Plates.
- (3) Insert the M10 L Bolt Plates with Plastic Washers into the front mounting holes, (Fig 5). Thread the Plastic Washer down until it is tight against the floor panel. The Plastic Washer is designed to hold the M10 L Bolt Plate in place during Bracket installation.

Note:

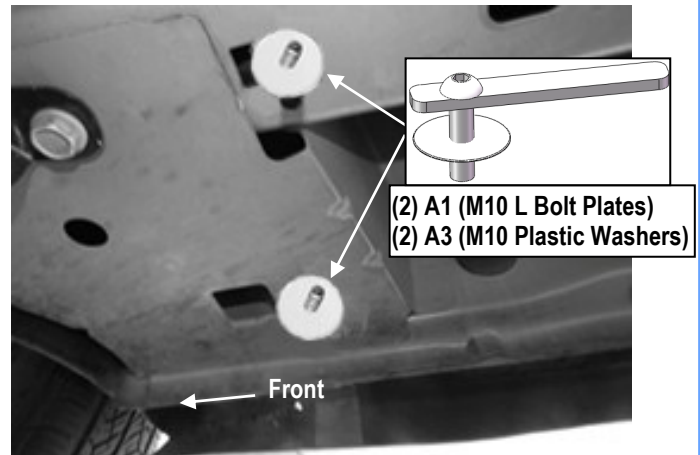
- The mounting locations may be covered by sealant or undercoating.
- Use a small screwdriver to poke through the sealant to uncover the hole.
- Hold the Assembled Passenger Front Mounting Bracket up to the passenger side front mounting location to help to determine the correct mounting holes.

IMPORTANT:

- Brackets must sit flat against sheet metal. Scrape any excess sealant from body panel before installing any Bracket.



(Fig 4) Passenger Side Front Mounting Position



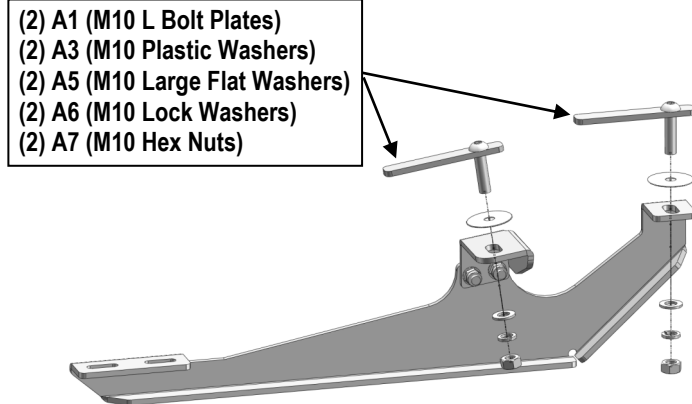
(Fig 5) M10 L Bolt Plates Installed In The Front Mounting Holes (With M10 Plastic Washers)

STEP 5: Install Passenger Front Mounting Bracket

Install the Assembled Passenger Front Mounting Bracket (**PFM+PFS**) to the Passenger Side Front Mounting Position (**See Figs 4-6**) with:

- (2) A1 (M10 L Bolt Plates)
- (2) A3 (M10 Plastic Washers)
- (2) A5 (M10 Large Flat Washers)
- (2) A6 (M10 Lock Washers)
- (2) A7 (M10 Hex Nuts)

Note: Do not fully tighten hardware at this time.



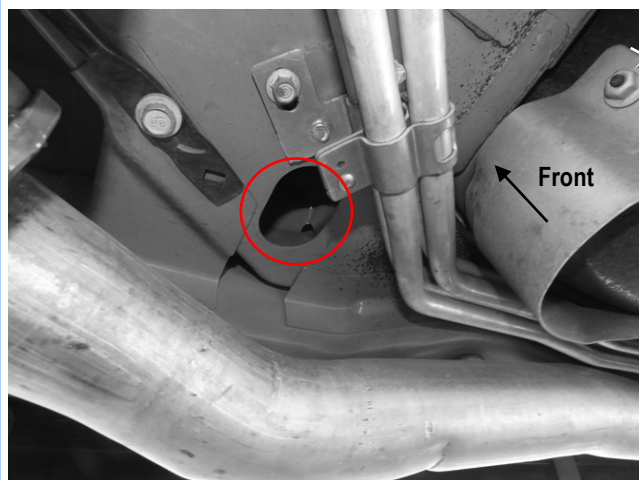
(Fig 6) Passenger Front Mounting Bracket Installation



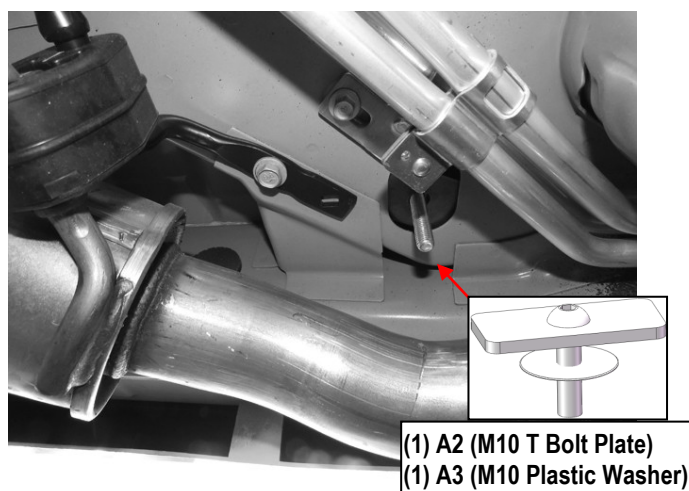
STEP 6: Locate Passenger Center Mounting Position

- Locate the large slot above the Passenger Center exhaust pipe, (See Fig 7).
- Partially thread A3 (M10 Plastic Washer) onto A2 (M10 T-Bolt Plate). Insert the M10 T Bolt Plate with Plastic Washer into the front mounting hole, (See Fig 8).
- Thread the Plastic Washer down until it is tight against the floor panel.

Note: The Plastic Washer is designed to hold the M10 T Bolt Plate in place from falling into the body panel during Bracket installation.



(Fig 7) Passenger Side Center Mounting Position



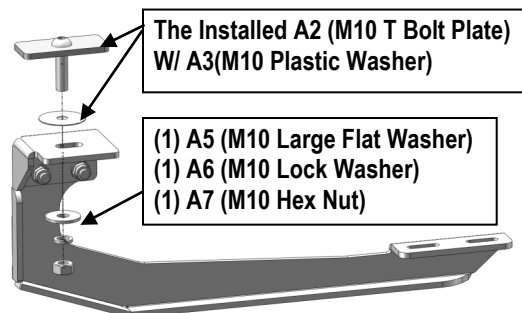
(Fig 8) M10 T Bolt Plate Installed
(on the Passenger Side Center Mounting Location)

STEP 7: Install Passenger Center Mounting Bracket

Install the Assembled Passenger Center Mounting Bracket (**PCM+PCB**) to the Passenger Side Center Mounting Position (See Fig 10) with:

- (1) A2 (M10 T Bolt Plates)
- (1) A3 (M10 Plastic Washers)
- (1) A5 (M10 Large Flat Washers)
- (1) A6 (M10 Lock Washers)
- (1) A7 (M10 Hex Nuts)

Note: Do not fully tighten hardware at this time.

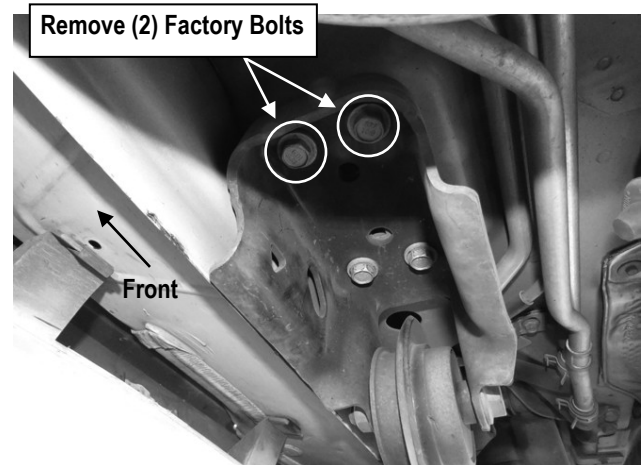


(Fig 10) Passenger Center Mounting Bracket Installation



STEP 8: Locate Passenger Rear Mounting Location

- (1) Locate the passenger side rear mounting location.
- (2) Remove the (2) factory hex bolts (**See Fig 8**).

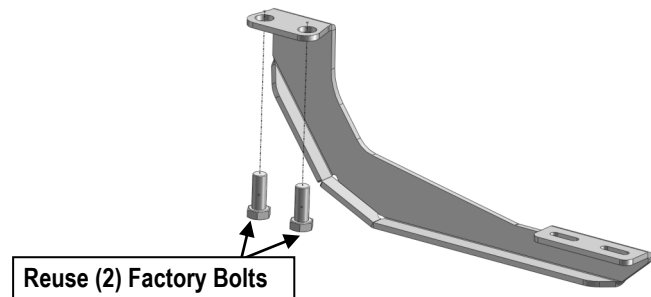


(Fig 8) Passenger Side Rear Mounting Position

STEP 9: Install Passenger Rear Mounting Bracket

Re-use the (2) factory hex bolts (Removed on Step 8) to attach the Passenger Rear Mounting Bracket (**PRM**) to the rear mounting Position. (**See Fig 11**)

Note: Do not fully tighten hardware at this time.



(Fig 11) Passenger Rear Mounting Bracket Installation

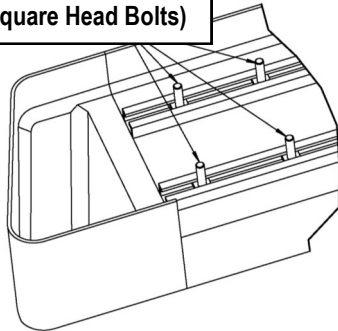
STEP 10: Passenger Side Running Board Installation

- (1) Slide (3) B1 (M6X1-20mm Square Head Bolts) into each bottom channel (**See Fig 12**).
- (2) Carefully position the Running Board onto the (3) Mounting Brackets.
- (3) Attach the Running Board to each Mounting Brackets (**See Fig 13**) with:
 - (2) B1 (M6X1-20mm Square Head Bolts)
 - (2) B2 (M6 X-Large Flat Washers)
 - (2) B3 (M6 Nylon Lock Nuts)

Note: Do not slide the Running Board on the Brackets or the bottom surface of the board will be damaged.

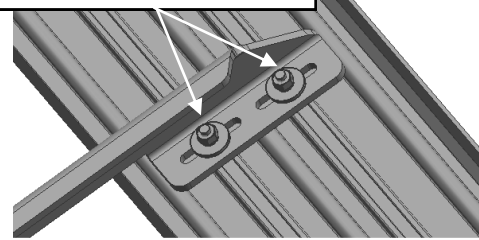


(3) B1 (M6X1-20 Square Head Bolts)



(Fig 12) Slide M6X1-20mm Square Head Bolts Into The Bottom Channels

(2) B1 (M6X1-20 Square Head Bolts)
(2) B2 (M6 X-Large Flat Washers)
(2) B3 (M6 Nylon Lock Nuts)



(Fig 13) Running Board Installed Onto Mounting Bracket (Example)

STEP 11: Passenger Side Step Bar Adjustment

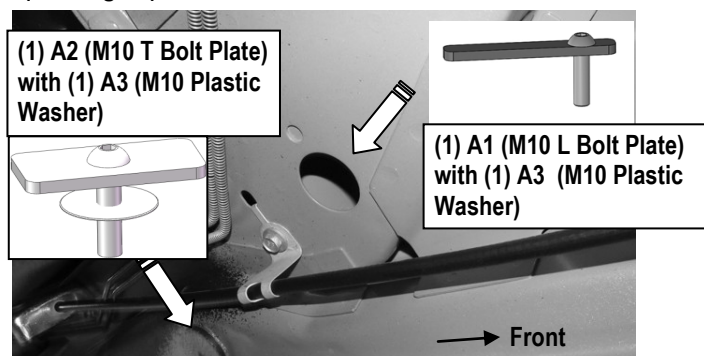
- Level and adjust the Step Bar properly.
- Tighten all 6mm hardware with 6-7 ft-lbs torque; all 8mm hardware with 16-17 ft-lbs torque; all 10mm hardware with 31-32 ft-lbs torque.

STEP 12: The Other Side Step Bracket Installation

- Refer to the Passenger Side installation and proceed to install the Driver Side front and rear mounting brackets.
- The installation of the Driver Center Mounting Bracket is different from the passenger side; refer to Steps 13&14.

STEP 13: Locate Driver Center Mounting Position

- (1) Move to the Driver Center Mounting Location. Locate the large hole and remove the plastic plug coving the hole on the frame channel. (See Fig 14).
- (2) Insert the remaining (1) A1 (M10 L Bolt Plate) with (1) A3 (M10 Plastic Washer) and (1) A2 (M10 T Bolt Plate) with (1) A3 (Plastic Washer) into the holes. (See Fig 14).



(Fig 14) Driver Side Center Mounting Position

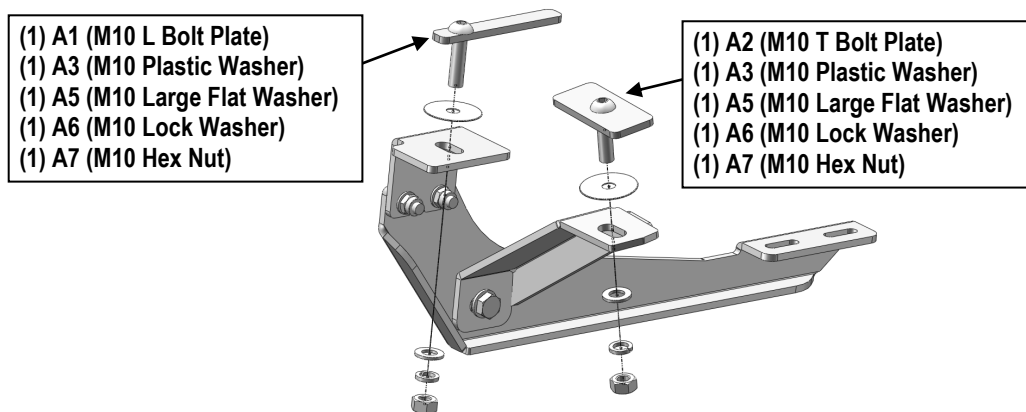


STEP 14: Install Driver Center Mounting Bracket

Install the Assembled Driver Center Mounting Bracket (**DCM+DCB+DCS**) to the Driver Side Center Mounting Position (**See Fig 15**) with:

- (1) A2 (M10 T Bolt Plate)
- (1) A1 (M10 L Bolt Plate)
- (2) A3 (M10 Plastic Washers)
- (2) A5 (M10 Large Flat Washers)
- (2) A6 (M10 Lock Washers)
- (2) A7 (M10 Hex Nuts)

Note: Do not fully tighten hardware at this time.



(Fig 15) Driver Center Mounting Bracket Installation

STEP 15: The Other Side Step Bar Installation

Repeat **Steps 10 & 11** for the Other Side Step Bar Installation.

And then installation is completed!!!

Attention

Do periodic inspections to the installation to make sure that all hardware is secure and tight.

In order to protect your bars/boards, please use mild soap/non-abrasive products for cleaning only.