



# iBoard® Series

## INSTALLATION INSTRUCTIONS

**PART#: IB-R208**

### BEFORE INSTALLATION

REMOVE CONTENTS FROM BOX. VERIFY ALL PARTS ARE PRESENT. READ INSTRUCTIONS CAREFULLY BEFORE STARTING INSTALLATION. ASSISTANCE IS RECOMMENDED. THANK YOU FOR CHOOSING OUR PRODUCT!

These instructions are provided for reference only. We strongly recommend installation by a professional installer for the best results. We are not responsible for any damage caused during installation.

**\*ROCKER PANEL MOUNT**

**\*NO DRILLING REQUIRED**

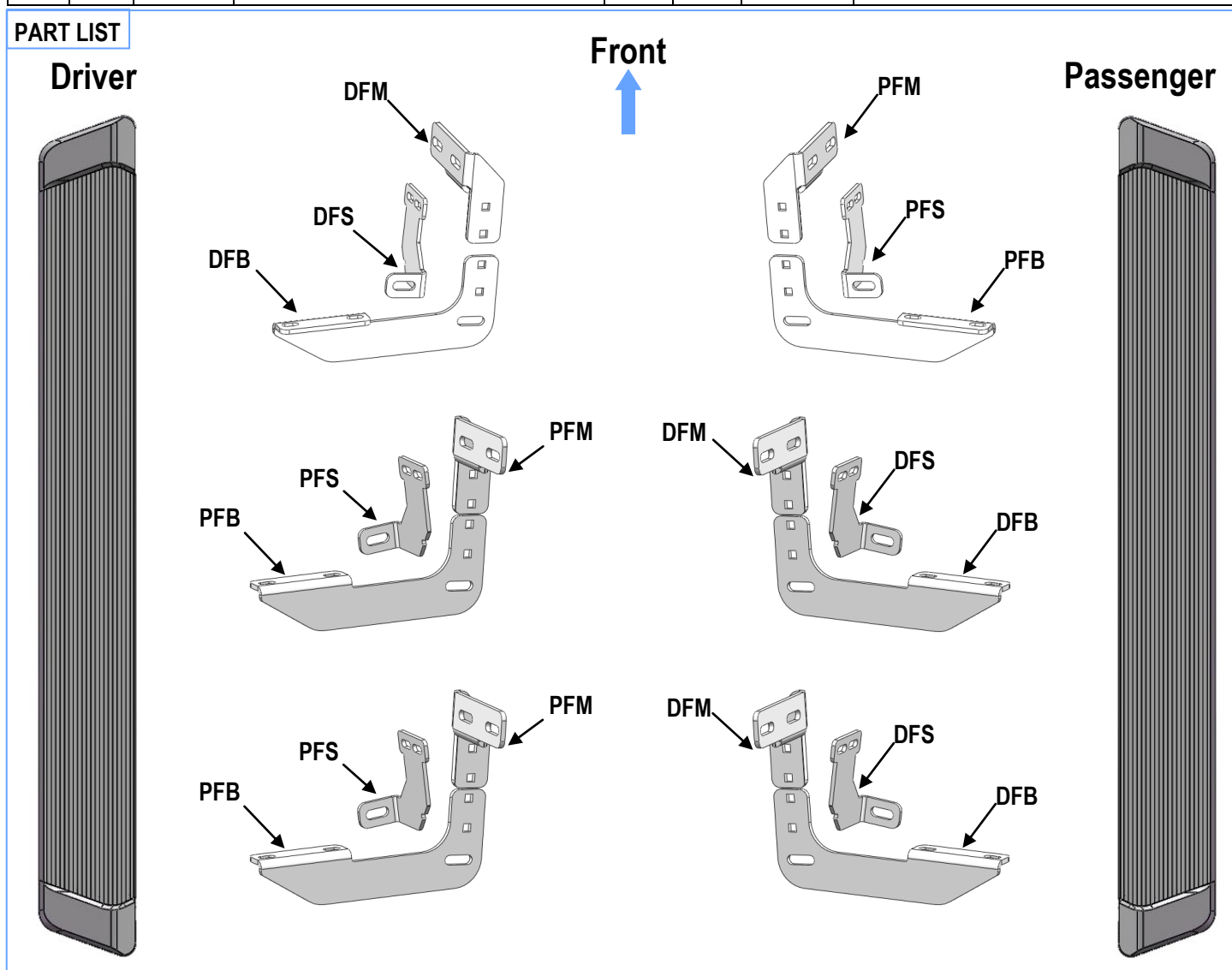
### Torque Value

| Fastener Size | Tightening Torque (ft-lbs) | Required |
|---------------|----------------------------|----------|
| 6mm           | 6-7                        | √        |
| 8mm           | 16-18                      | √        |
| 10mm          | 31-32                      | X        |
| 12mm          | 56-58                      | X        |
| 14mm          | 92-94                      | X        |



| Mounting Bracket List |     |               |  |      |     |               |  |
|-----------------------|-----|---------------|--|------|-----|---------------|--|
| Item                  | QTY | Bracket Label | Description  | Item | QTY | Bracket Label | Description  |
| 1#                    | 3   | DFM           | Mounting Bracket for Driver Front / Passenger Center /Rear | 4#   | 3   | PFM           | Mounting Bracket for Passenger Front / Driver Center /Rear |
| 2#                    | 3   | DFB           | Bar Brackets for Driver Front / Passenger Center /Rear     | 5#   | 3   | PFB           | Bar Bracket for Passenger Front / Driver Center /Rear      |
| 3#                    | 3   | DFS           | Support Bracket for Driver Front / Passenger Center /Rear  | 6#   | 3   | PFS           | Support Bracket for Passenger Front / Driver Center /Rear  |

## PART LIST

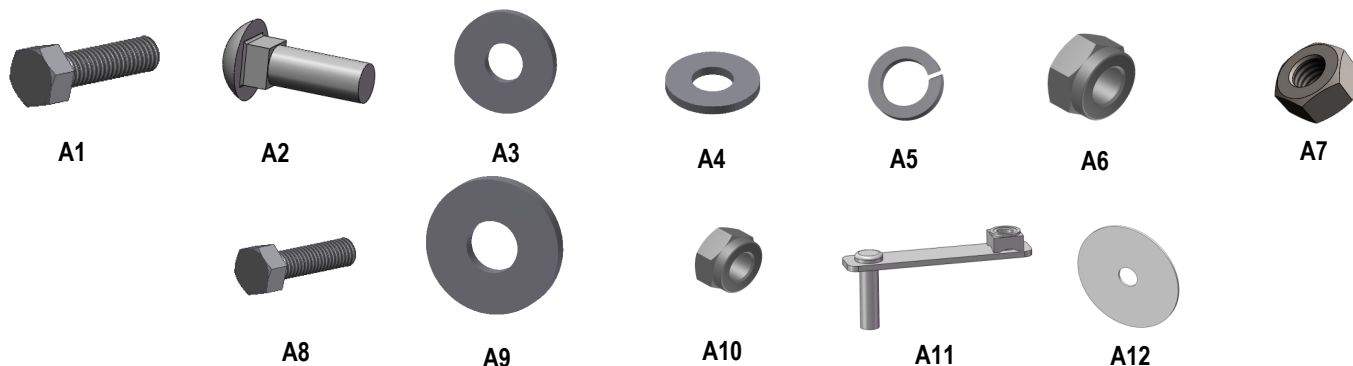




Scan for  
Installation Video

### Hardware Package A (For Bracket Installation)

| Item | QTY | Description               | Item | QTY | Description             |
|------|-----|---------------------------|------|-----|-------------------------|
| A1   | 18  | M8X1.25-30 Hex Bolts      | A7   | 6   | M8X1.25 Hex Nuts        |
| A2   | 12  | M8X1.25-25 Carriage Bolts | A8   | 12  | M6X1-25 Hex Bolts       |
| A3   | 24  | M8 Large Flat Washers     | A9   | 24  | M6 X-Large Flat Washers |
| A4   | 12  | M8 Flat washers           | A10  | 12  | M6X1 Nylon Lock Nuts    |
| A5   | 12  | M8 Lock Washers           | A11  | 6   | M8 Bolt/Nut Plates      |
| A6   | 18  | M8X1.25 Nylon Lock Nuts   | A12  | 6   | M8 Plastic Washers      |



### Hardware Package B (For Running Board Installation)

| Item | QTY | Description                 | Item | QTY | Description        |
|------|-----|-----------------------------|------|-----|--------------------|
| B1   | 12  | M6X1-20mm Square Head Bolts | B3   | 12  | M6 Nylon Lock Nuts |
| B2   | 12  | M6 Large Flat Washers       |      |     |                    |





## STEP 1: Driver Side Mounting Brackets Assembly

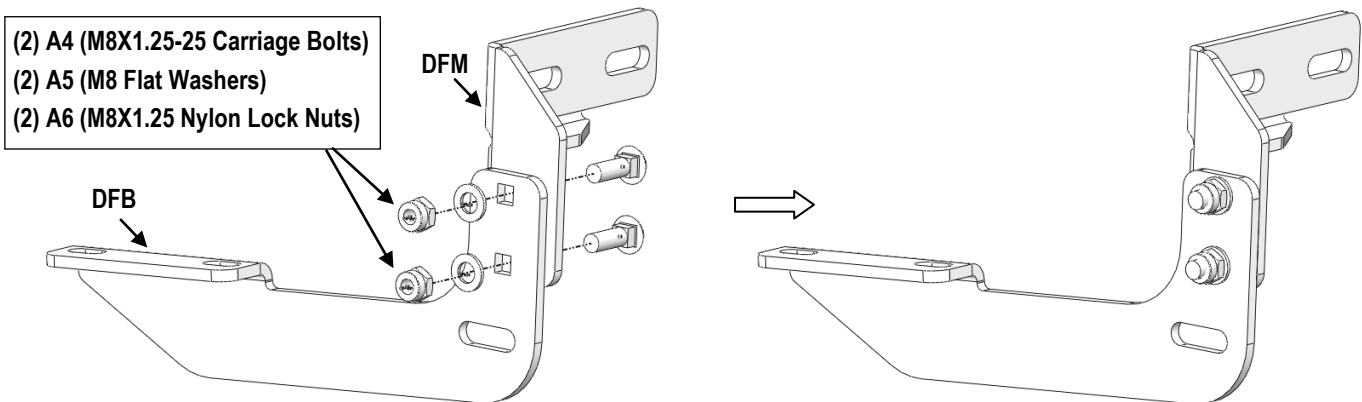
1. Assemble (1) Driver Front Mounting Brackets (**DFM+DFB**) (Fig 1) With:

- (2) A2 (M8X1.25-25mm Carriage Bolts)
- (2) A4 (M8 Flat Washers)
- (2) A6 (M8X1.25 Nylon Lock Nuts)

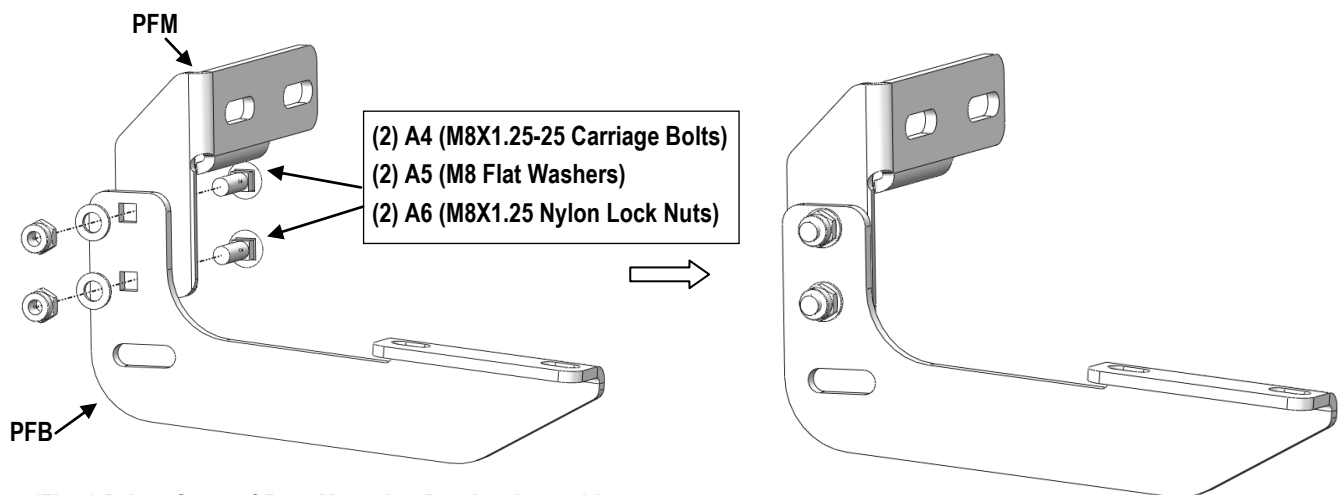
**Note:** All (3) DFM's and (3) DFB's are Universal.

2. Repeat to assemble (2) Driver Center & Rear Mounting Brackets (**PFM+PFB**) (Fig 2).

**Note :** All (3) PFM's and (3) PFB's are Universal.



(Fig 1) Driver Front Mounting Bracket Assembly



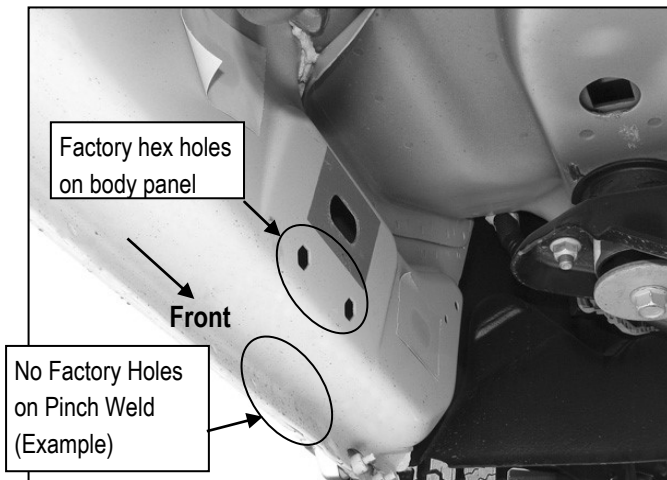
(Fig 2) Driver Center & Rear Mounting Bracket Assembly



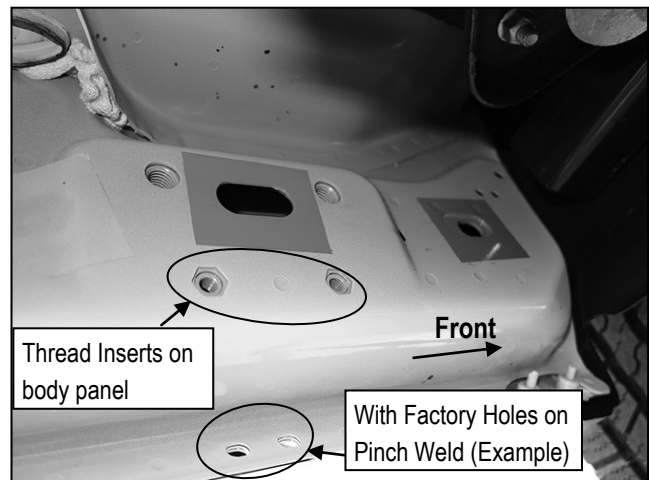
## STEP 2: Locate Driver Side Mounting Positions

1. Locate the oval holes along the inner side of the body panel on driver side, (Figs 3-7).
2. Remove the sealing tape covering the factory holes if equipped.
3. Identify the style of the mounting position on your vehicle.
  - **Models without factory threaded inserts in body panel (Figs 3,5,6)**
  - **Models with factory threaded inserts in body panel (Figs 4&7)**

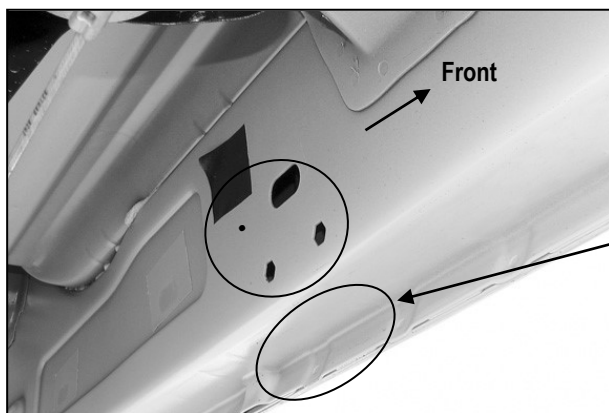
### Driver Side Front Mounting Position



(Fig 3) Without Factory threaded Inserts on body panel



(Fig 4) With Factory threaded Inserts on body panel

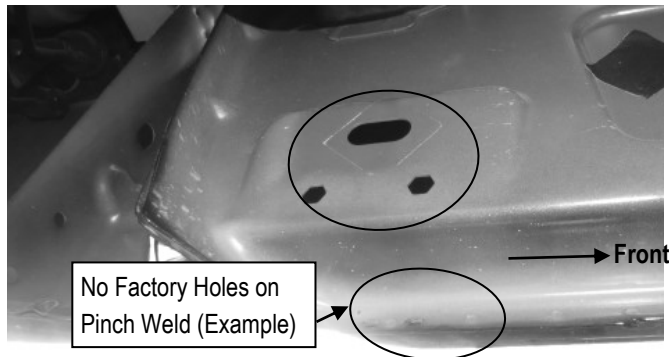


Example for models w/o factory holes on the pinch weld  
(some models may have holes)

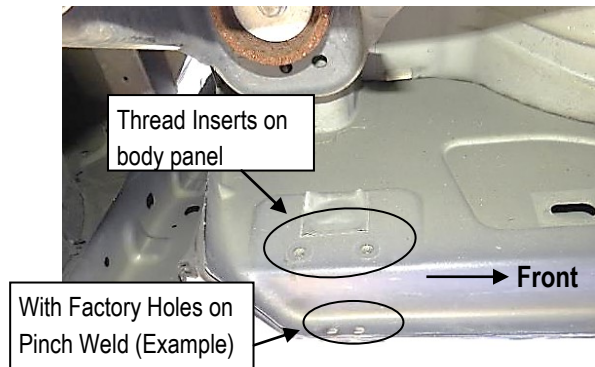
(Fig 5) Driver Side Center Mounting Position



### Driver Side Rear Mounting Position



(Fig 6) Without Factory threaded Inserts on body panel



(Fig 7) With Factory threaded Inserts on body panel

## STEP 3: Driver Front Mounting Bracket Installation

**Determine the correct procedure base on the style of the mounting position on the body panel:**

### 1. For Models without factory threaded inserts in body panel (Figs 3,5,6):

#### (1) M8 Bolt/Nut Plate installation:

- Thread (1) A1 (M8X1.25-30 Hex Bolt) into the welded nut on A13 (M8 Bolt/Nut Plate) until it is flush with the welded nut, (Fig 8).
- Use the M8 hex bolt as a handle and insert the M8 Bolt/Nut Plate into the oval hole; Feed the thread end through a factory hex hole, (Fig 9).
- Thread (1) A14 (M8 Plastic Washer) onto the M8 Bolt/Nut Plate and tighten against the body panel, (Fig 10). Then remove the A3 (M8 Hex Bolt).

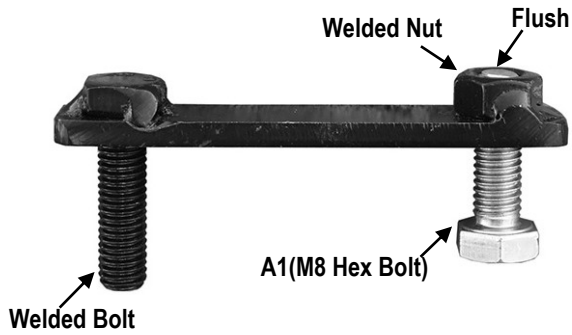
**NOTE:** The Plastic washer is designed to keep the Bolt/Nut Plate from falling into the body panel and to aid in bracket installation.

#### (2) The Assembled Driver Front Mounting Bracket (DFM+DFB) Installation:

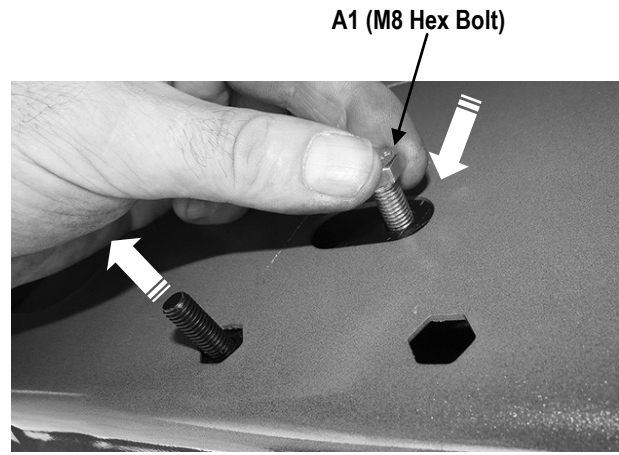
Attach (1) Assembled driver side mounting Bracket to the installed A13 (M8 Bolt/Nut Plate) (Fig 11) by using:

- (2) A4 (M8 Large Flat Washer)
- (2) A5 (M8 Lock Washer)
- (1) A6 (M8 Hex Nut)
- (1) A3 (M8X1.25-30 Hex Bolt)

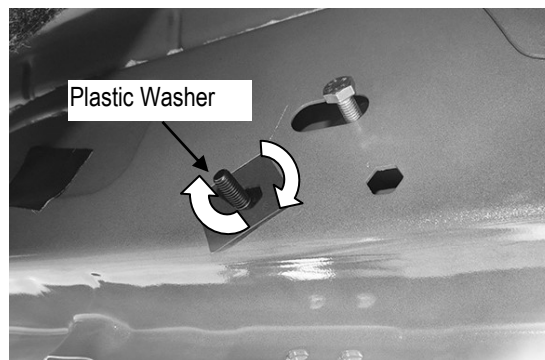




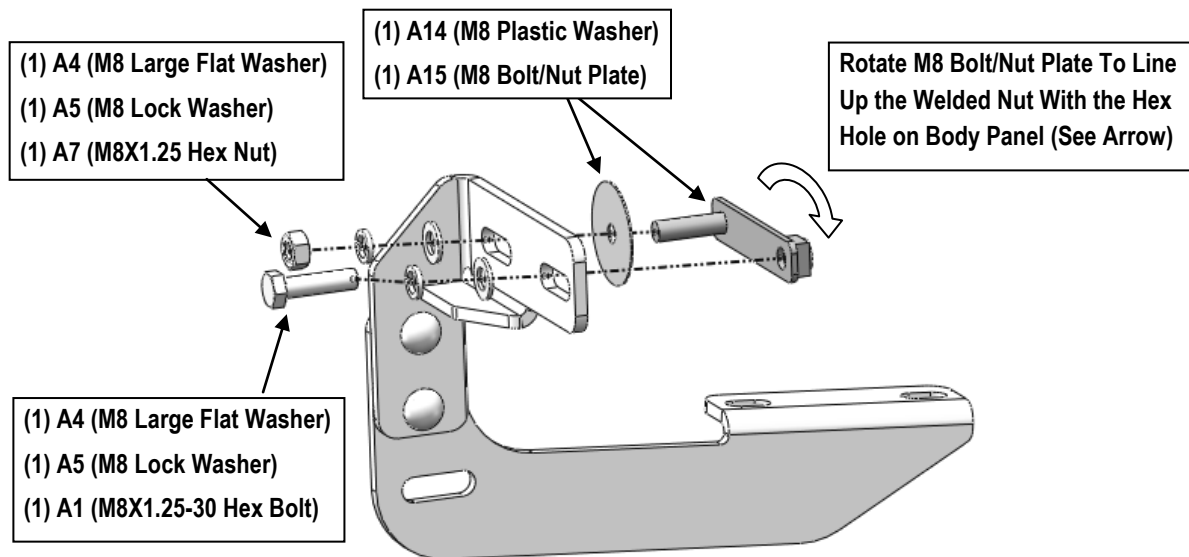
(Fig 8) M8 Bolt/Nut Plate with M8 Hex Bolt



(Fig 9) Insert M8 Bolt/Nut Plate to Hex Hole



(Fig 10) M8 Plastic Washer Installation



(Fig 11) The Assembled Driver Front Mounting Bracket Installation (For Models without factory threaded inserts in body panel )

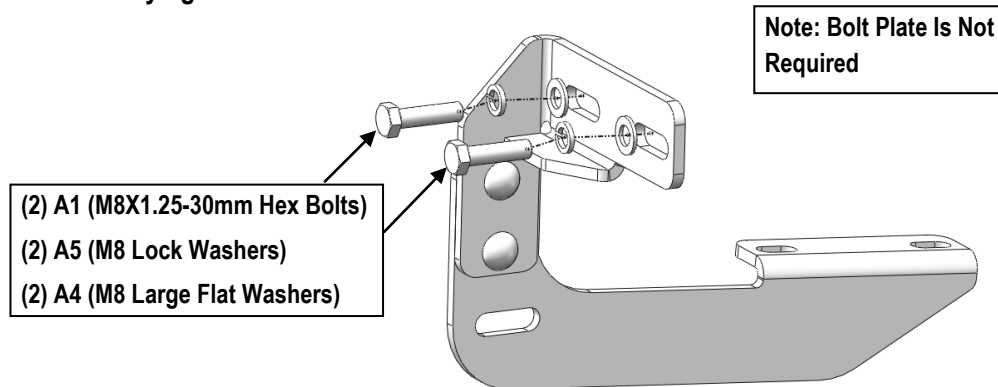


## 2. For Models with factory threaded inserts (Figs 4&7):

Directly Bolt the Assembled Driver Front Mounting Bracket (**DFM+DFB**) to the factory threaded inserts (**Fig 12**) by using :

- (2) A1 (M8X1.25-30mm Hex Bolts)
- (2) A5 (M8 Lock Washers)
- (2) A4 (M8 Large Flat Washer)

**Note: Do not fully tighten hardware at this time.**

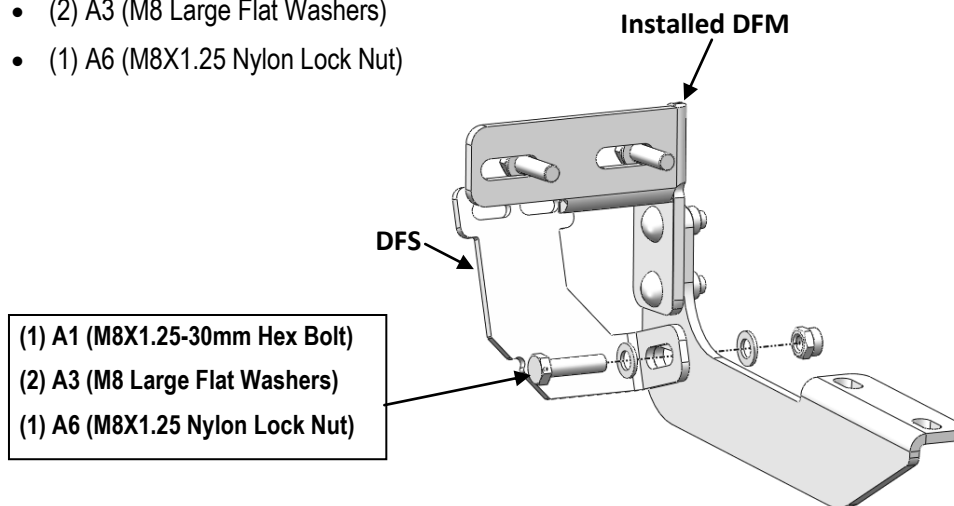


(Fig 12) Driver Front Mounting Bracket Installation (For Models With Factory Threaded Inserts)

## STEP 4: Install Driver Front Support Bracket

1. Attach (1) Driver Side Support Bracket (**DFS**) to the installed Driver Front Mounting Bracket (**Fig 13**).with

- (1) A1 (M8X1.25-30 Hex Bolt)
- (2) A3 (M8 Large Flat Washers)
- (1) A6 (M8X1.25 Nylon Lock Nut)



(Fig 13) Driver Front Support Bracket and Driver Front Mounting Bracket Assembly





## 2. Secure the Driver Front Support Bracket to the Pinch Weld:

- (1) Rotate and position the support bracket (**DFS**) against the inner surface of the pinch weld.
- (2) **For Models with factory holes on Pinch weld (Fig 4):**  
Align and secure the support bracket to the two factory holes in the pinch weld (**Fig 14**) using:
  - (2) A8 (M6X1-25 Hex Bolts)
  - (4) A9 (M6 X-Large Flat Washers)
  - (2) A10 (M6X1 Nylon Lock Nuts),

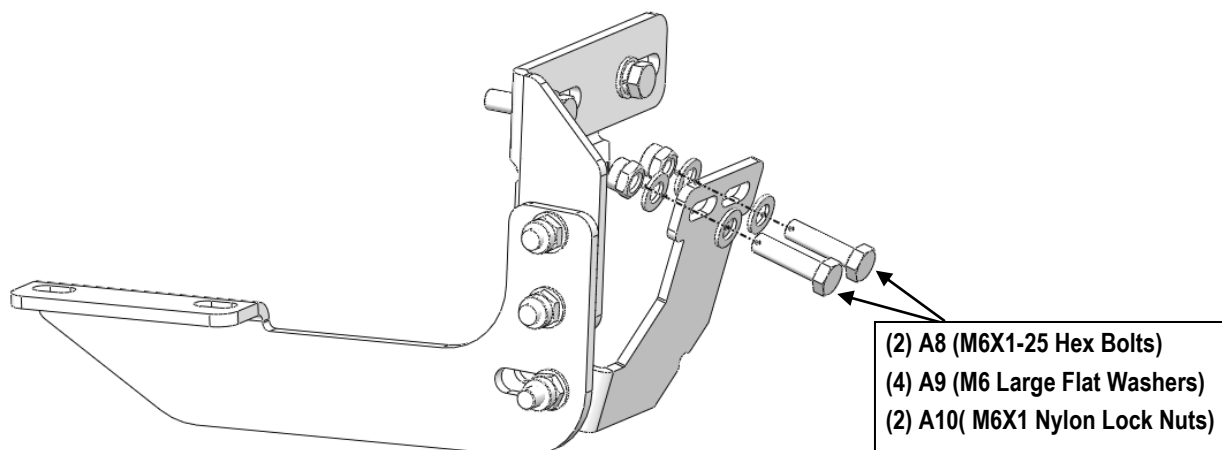
**Note: Do not fully tighten hardware at this time.**

### (3) For Models without factory holes on Pinch Weld (Figs 3&6):

- Position the Driver Front Support Bracket (DFS) against the pinch weld and ensure proper alignment.
- Using the support bracket as a template, mark the locations for two mounting holes on the pinch weld.
- Drill two 1/4" holes at the marked locations. (**Refer to Step 9**)

**NOTE: Before drilling, verify that the step bar is level and properly positioned. It is recommended to drill the holes after completing the step bar installation in Step 8. Don't Drill at this time.**

- Secure the Support Bracket onto the drilled holes (**Fig 14**).



(Fig 14) Driver Side Support Bracket Installation

## STEP 5: Install Driver Side Center & Rear Mounting Brackets

- Move to the Driver center and rear mounting locations, (**Figs 5-7**).
- Repeat **Steps 3&4** to install the assembled driver side center & rear mounting brackets (**PFM+PFB**).



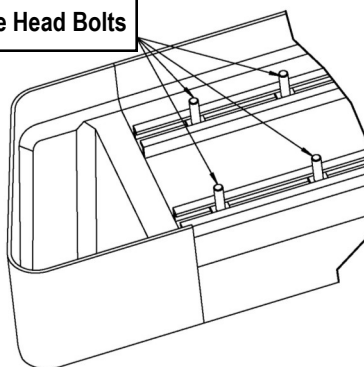
## STEP 6: Driver Side Running Board Installation

Once all (3) mounting brackets are installed, then proceed to the Running Board installation.

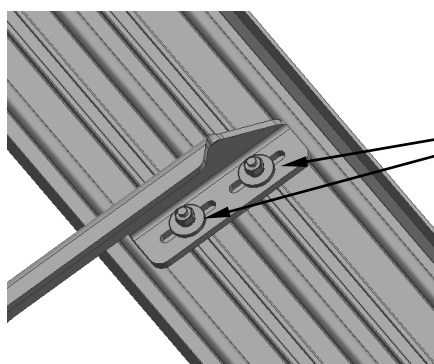
- (1) Select a Running Board. Slide (3) B1 M6X1-20mm Square Head Bolts into each bottom channel (**Fig 8**).
- (2) Carefully position the Running Board onto the (3) Mounting Brackets.
- (3) Attach the Running Board to each Mounting Bracket (**Fig 9**) with
  - (2) B1 M6X1-20mm Square Head Bolts
  - (2) B2 M6 Large Flat Washers and
  - (2) B3 M6 Nylon Lock Nuts

**Note: Do not slide the Running Board on the Brackets or the bottom surface of the board will be damaged.**

M6X1-20mm Square Head Bolts



(Fig 8) Slip M6X1-20mm Square Head Bolts Into The Bottom Channels



- (2) B1 (M6X1-20mm Square Head Bolts)
- (2) B2 (M6 Large Flat Washers)
- (2) B3 (M6 Nylon Lock Nuts)

(Fig 9) Running Board Installed Onto Mounting Bracket

## STEP 7: Driver Side Running Board Adjustment

- Level and adjust the Running Board properly.
- **For Models without factory holes on Pinch Weld:** Mark and Drill holes for the installed support brackets (**Refer to step 4**), And then secure the Support Brackets to the Drilled holes.
- Tighten all 6mm hardware with 6-7 ft-lbs torque and 8mm hardware with 16-18 ft-lbs torque.



## STEP 8: The Other Side Running Board Installation

Repeat **Steps 1-7** for the Other Side Running Board Installation.  
And then installation is completed!!!

### Attention

Do periodic inspections to the installation to make sure that all hardware is secure and tight.  
In order to protect your bars/boards, please use mild soap/non-abrasive products for cleaning only.