



iBoard® Series

INSTALLATION INSTRUCTIONS

PART#: IB-R258

BEFORE INSTALLATION

REMOVE CONTENTS FROM BOX. VERIFY ALL PARTS ARE PRESENT. READ INSTRUCTIONS CAREFULLY BEFORE STARTING INSTALLATION. ASSISTANCE IS RECOMMENDED. THANK YOU FOR CHOOSING OUR PRODUCT!

These instructions are provided for reference only. We strongly recommend installation by a professional installer for the best results. We are not responsible for any damage caused during installation.

***ROCKER PANEL MOUNT**

***NO DRILLING REQUIRED**

Torque Value

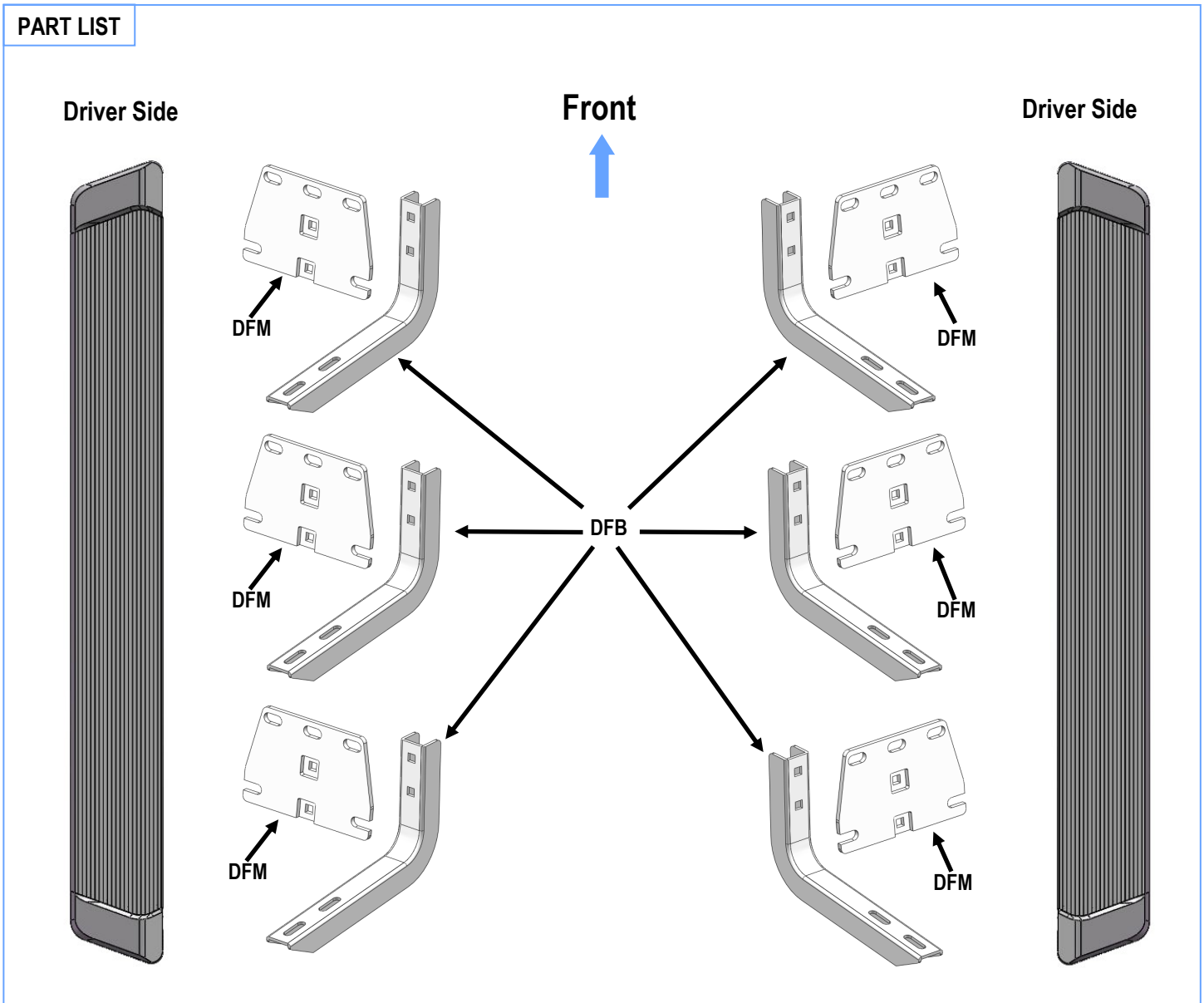
Fastener Size	Tightening Torque (ft-lbs)	Required
6mm	6-7	√
8mm	16-18	√
10mm	31-32	X
12mm	56-58	X
14mm	92-94	X



Scan for
Installation Video

Mounting Bracket List			
Item	QTY	Part Name	Description
1#	6	DFM	Mounting Bracket for Driver / Passenger Side
2#	6	DFB	Bar Bracket for Driver / Passenger Side

PART LIST





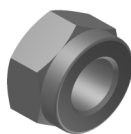
Scan for
Installation Video

Hardware Package A (For Bracket Installation)

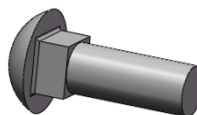
Item	QTY	Description	Item	QTY	Description
A1	18	M8 Large Flat Washers	A3	12	M8X1.25-25 Carriage Bolts
A2	30	M8X1.25 Nylon Lock Nuts	A4	12	M8 Flat Washers



A1



A2



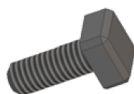
A3



A4

Hardware Package B (For Step Bar Installation)

Item	QTY	Description	Item	QTY	Description
B1	12	M6X1-20mm Square Head Bolts	B3	12	M6 Nylon Lock Nuts
B2	12	M6 Large Flat Washers			



B1



B2

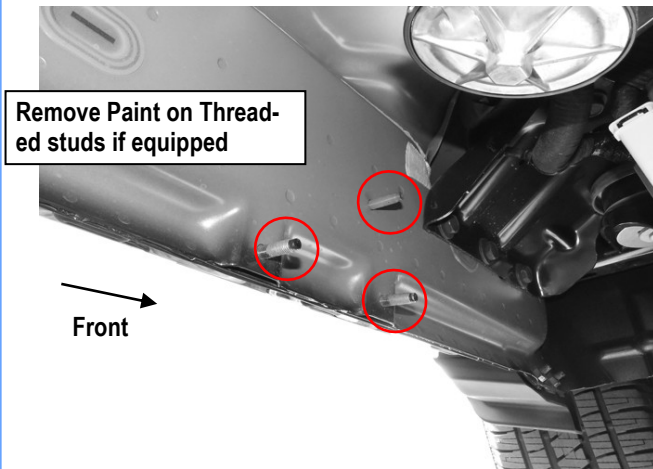


B3

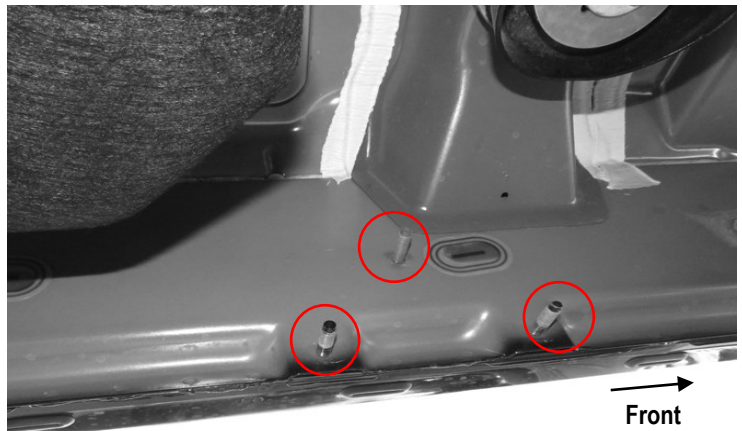


STEP 1: Locate Driver Side Mounting Locations

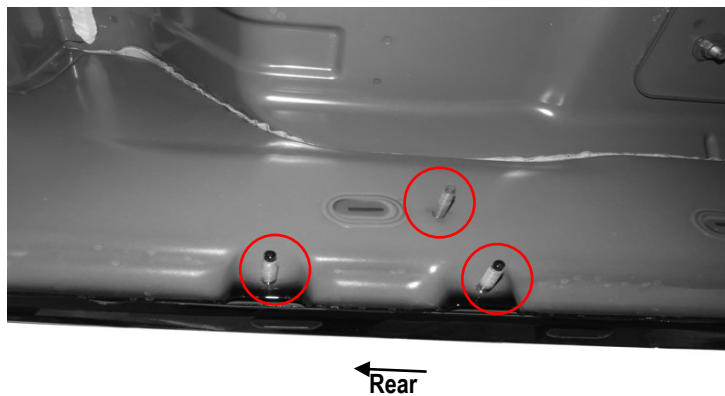
- Locate (3) factory studs along the inner side of driver side body panel. (Figs 1-3).
- Use a wire brush to remove paint on the threaded studs if equipped.



(Fig 1) Driver Side Front Mounting Location



(Fig 2) Driver Side Center Mounting Location



(Fig 3) Driver Side Rear Mounting Position



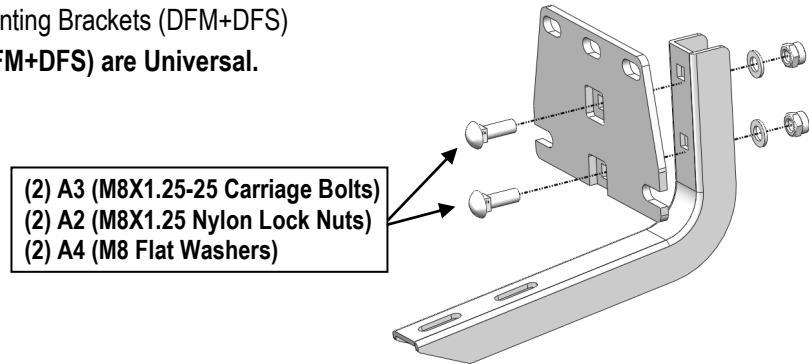
STEP 2: Assemble Driver Side Mounting Brackets

(1) Assemble (1) Driver Side Mounting Bracket (DFM+DFS) (Fig 4) with:

- (2) A3 (M8X1.25-25 Carriage Bolts)
- (2) A4 (M8 Flat Washers)
- (2) A2 (M8X1.25 Nylon Lock Nuts)

(2) Repeat to Assemble the remaining (5) Mounting Brackets (DFM+DFS)

Note: All (6) Assembled Mounting Brackets (DFM+DFS) are Universal.



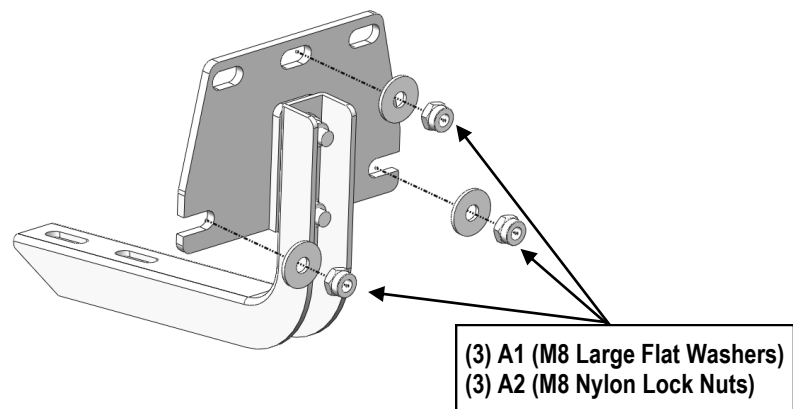
(Fig 4) Typical Mounting Bracket (DFM+DFS) Assembly

STEP 3: Install Driver Side Mounting Brackets

(1) Attach (1) Assembled Mounting Bracket to the Driver Front Mounting Position (Figs 1&5) with:

- (3) A1 (M8 Large Flat Washers)
- (3) A2 (M8X1.25 Nylon Lock Nuts)

(2) Repeat to install (2) Assembled Mountings (DFM+DFB) to Driver Center Mounting Position and Driver Rear Mounting Position.



(Fig 5) Typical Driver Side Mounting Bracket (DFM+DFB) Installation



STEP 4: Driver Side Running Board Installation

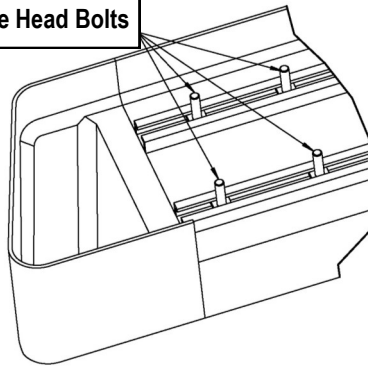
Once all (3) Driver side mounting brackets are installed, then proceed to the Running Board installation (**Figs 6-7**).

- Select a Running Board. Slip (3) B1(M6X1-20mm Square Head Bolts) into each bottom channel (**Fig 6**).
- Carefully position the Running Board onto the (3) Mounting Brackets.
- Attach the Running Board to each Mounting Bracket with (**Fig 7**):
 - (2) B1 (M6X1-20mm Square Head Bolts)
 - (2) B2 (M6 Large Flat Washers)
 - (2) B3 (M6 Nylon Lock Nuts)

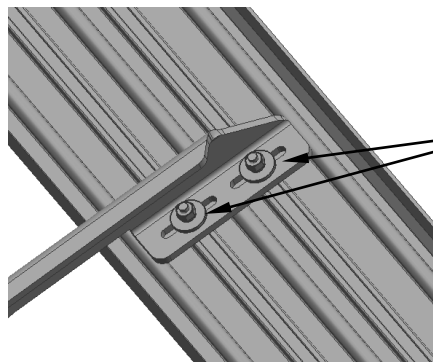
Note: Do not fully tighten hardware at this time.

IMPORTANT: Do not slide the Running Board on the Brackets or the bottom surface of the board will be damaged.

M6X1-20mm Square Head Bolts



(Fig 6) Slip M6X1-20mm Square Head Bolts Into The Bottom Channels



(2) B1 (M6X1-20mm Square Head Bolts)
(2) B2 (M6 Large Flat Washers)
(2) B3 (M6 Nylon Lock Nuts)

(Fig 7) Running Board Installed Onto Mounting Bracket



STEP 5: Driver Side Running Board Adjustment

- Level and adjust the Running Board properly.
- Tighten all 6mm hardware with 6-7 ft-lbs torque.
- Tighten all 8mm hardware with 16-18 ft-lbs torque.

Important: Please follow the recommended Tightening Torques shown in the table on page 1.

Don't over tighten, or the nuts/bolts will be damaged.

STEP 6: The Other Side Running Board Installation

Move to the other side of the vehicle. Repeat **Steps 1-5** for the other Running Board installation.

Attention

- Do periodic inspections to the installation to make sure that all hardware is secure and tight.
- In order to protect your bars/boards, please use mild soap/non-abrasive products for cleaning only.