



iBoard® Series

INSTALLATION INSTRUCTIONS

PART#: IB-R906

BEFORE INSTALLATION

REMOVE CONTENTS FROM BOX. VERIFY ALL PARTS ARE PRESENT. READ INSTRUCTIONS CAREFULLY BEFORE STARTING INSTALLATION. ASSISTANCE IS RECOMMENDED. THANK YOU FOR CHOOSING OUR PRODUCT!

These instructions are provided for reference only. We strongly recommend installation by a professional installer for the best results. We are not responsible for any damage caused during installation.

***ROCKER PANEL MOUNT**

***NO DRILLING REQUIRED**

Torque Value

Fastener Size	Tightening Torque (ft-lbs)	Required
6mm	6-7	√
8mm	16-18	√
10mm	31-32	X
12mm	56-58	X
14mm	92-94	X

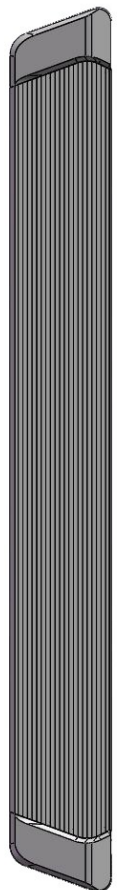


Scan for
Installation Video

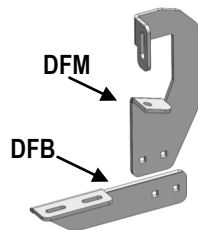
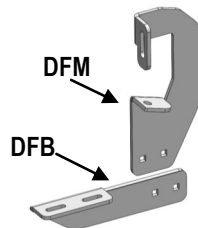
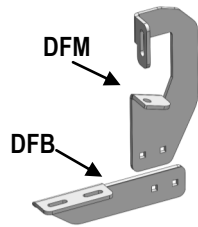
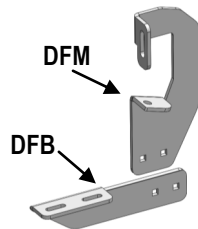
Mounting Bracket List			
Item	QTY	Bracket Label	Description
1#	8	DFM	Mounting Brackets for Driver / Passenger Side (Universal)
2#	8	DFB	Bar Brackets for Driver / Passenger Side (Universal)

PART LIST

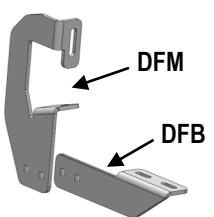
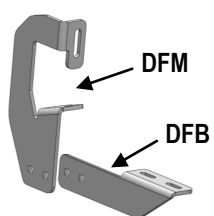
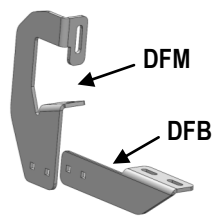
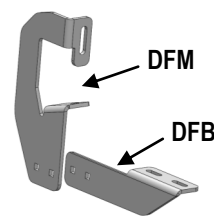
Driver



Front



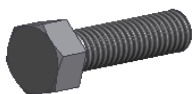
Passenger





Scan for
Installation Video

Item	QTY	Description	Item	QTY	Description
A1	16	M8X1.25-20mm Hex Bolts	A5	16	M8X1.25-25 Carriage Bolts
A2	16	M8 Large Flat Washers	A6	16	M8 Flat Washers
A3	16	M8 Lock Washers	A7	16	M8X1.25 Nylon Lock Nuts
A4	12	M8X1.25 Hex Nuts			



A1



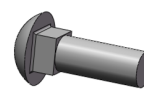
A2



A3



A4



A5



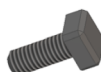
A6



A7

Hardware Package B (For Step Bar Installation)

Item	QTY	Description	Item	QTY	Description
B1	16	M6X1-20mm Square Head Bolts	B3	16	M6 Nylon Lock Nuts
B2	16	M6 Large Flat Washers			



B1



B2



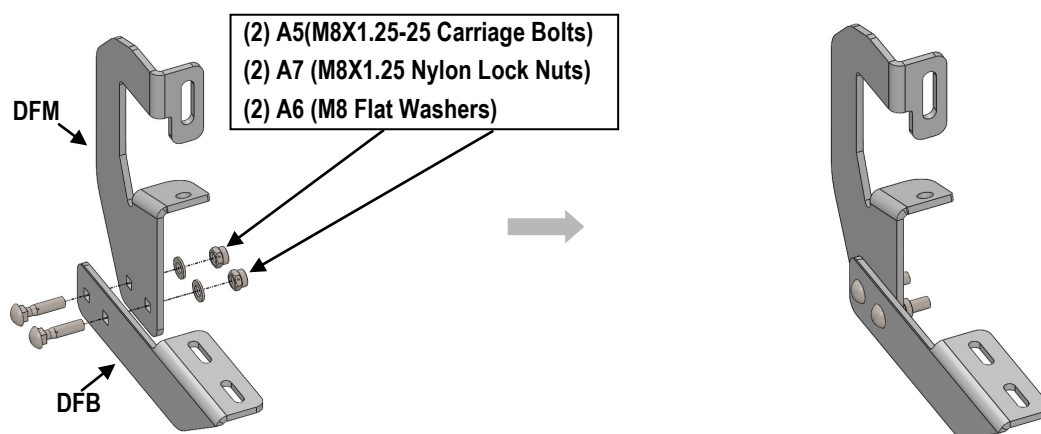
B3



STEP 1: Assemble Mounting Brackets

- (1) Assemble (1) Mounting Bracket (**DFM+DFB**) (Fig 1) with:
 - (2) A5 (M8X1.25-25 Carriage Bolts)
 - (2) A7 (M8X1.25 Nylon Lock Nuts)
 - (2) A6 (M8 Flat Washers)
- (2) Repeat to assemble remaining (7) Mounting Brackets (DFM +DFB).

Note: All (8) Assembled Mounting Brackets (DFM+DFB) are universal for Both Driver and Passenger Side.



(Fig 1) Universal Mounting Bracket (DFM+DFB) Assembly

STEP 2: Install Driver Front Mounting Bracket

Attach (1) Assembled Mounting Bracket (**DFM+DFB**) to the Driver Side Front Mounting Position.

(1) For Models with threaded stud on Rocker Panel using (Fig 2) :

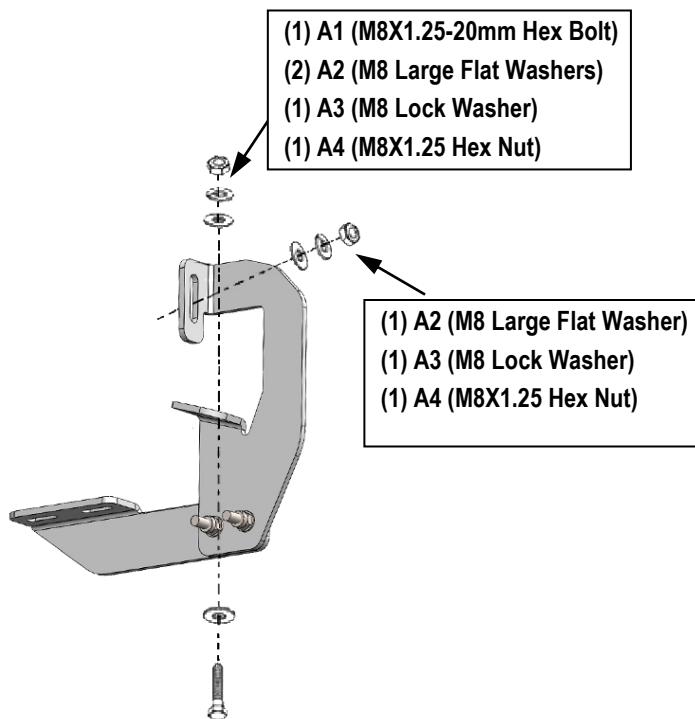
- (3) A2 (M8 Large Flat Washers)
- (2) A4 (M8X1.25 Lock Nuts)
- (1) A1 (M8X1.25-20 Hex Bolt)
- (2) A3 (M8 Lock Washers)

Do not tighten hardware at this time.

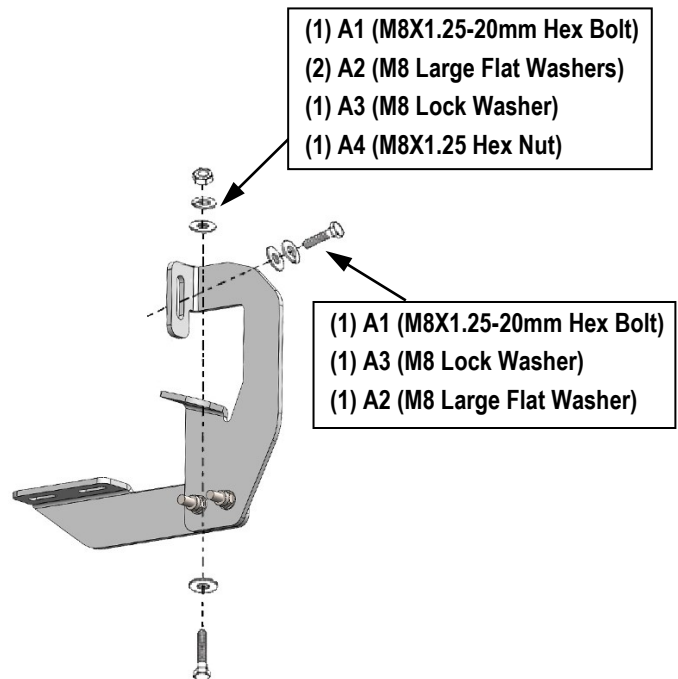


(2) For Models with threaded hole on Rocker Panel using (Fig 3) :

- (3) A2 (M8 Large Flat Washers)
- (2) A4 (M8X1.25 Lock Nuts)
- (2) A1 (M8X1.25-20 Hex Bolts)
- (2) A3 (M8 Lock Washers)



(Fig 2) Typical Mounting Bracket Installation
(For Models with threaded Stud On Rocker Panel)



(Fig 3) Typical Mounting Bracket Installation
(For Models With threaded Hole on Rocker Panel)

STEP 3: Install Driver Center & Rear Mounting Brackets

Move to the Driver Side Center & Rear Mounting Locations.

Repeat **Step 2** to install the other (3) Assembled Mounting Brackets.

Do not fully tighten hardware at this time.



STEP 4: Driver Running Board Installation

Once all (4) mounting brackets are installed, then proceed to the Running Board installation.

(1) Select a Running Board. Slide (4) B1 M6X1-20mm Square Head Bolts into each bottom channel (**Fig 4**).

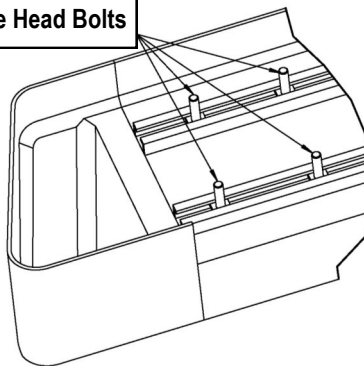
(2) Carefully position the Running Board onto the (3) Mounting Brackets.

(3) Attach the Running Board to each Mounting Bracket (**Fig 5**) with

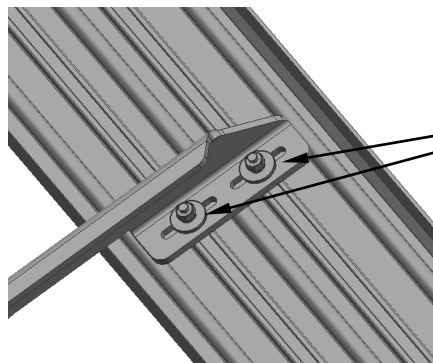
- (2) B1 M6X1-20mm Square Head Bolts
- (2) B2 M6 Large Flat Washers and
- (2) B3 M6 Nylon Lock Nuts

Note: Do not slide the Running Board on the Brackets or the bottom surface of the board will be damaged.

M6X1-20mm Square Head Bolts



(Fig 4) Slip M6X1-20mm Square Head Bolts Into The Bottom Channels



- (2) B1 (M6X1-20mm Square Head Bolts)
- (2) B2 (M6 Large Flat Washers)
- (2) B3 (M6 Nylon Lock Nuts)

(Fig 5) Running Board Installed Onto Mounting Bracket



STEP 5: Driver Side Running Board Adjustment

- Level and adjust the Running Board properly.
- Tighten all 6mm hardware with 6-7 ft-lbs torque and 8mm hardware with 16-18 ft-lbs torque.

STEP 6: The Other Side Running Board Installation

Move to the other side of the vehicle. Repeat **Steps 2-5** for the other side Running Board installation.

Attention

Do periodic inspections to the installation to make sure that all hardware is secure and tight.
In order to protect your bars/boards, please use mild soap/non-abrasive products for cleaning only.