



iBoard® Series

INSTALLATION INSTRUCTIONS

PART#: IB-R331

BEFORE INSTALLATION

REMOVE CONTENTS FROM BOX. VERIFY ALL PARTS ARE PRESENT. READ INSTRUCTIONS CAREFULLY BEFORE STARTING INSTALLATION. ASSISTANCE IS RECOMMENDED. THANK YOU FOR CHOOSING OUR PRODUCT!

These instructions are provided for reference only. We strongly recommend installation by a professional installer for the best results. We are not responsible for any damage caused during installation.

***ROCKER PANEL MOUNT**

***NO DRILLING REQUIRED**

Torque Value

Fastener Size	Tightening Torque (ft-lbs)	Required
6mm	6-7	√
8mm	16-18	√
10mm	31-32	X
12mm	56-58	X
14mm	92-94	X



Scan for
Installation Video

Mounting Bracket List			
Item	QTY	Part Name	Description
1#	6	Mounting Bracket	All (6) Mounting Bracket are universal.

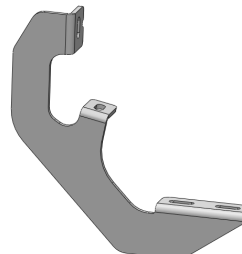
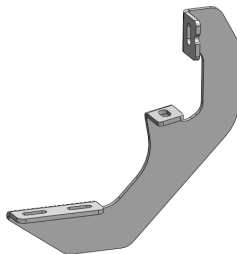
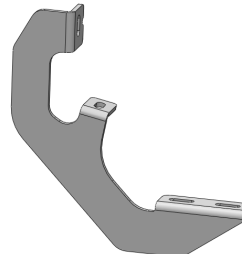
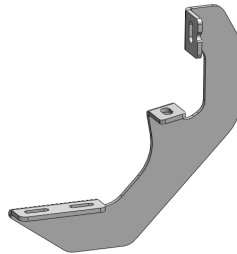
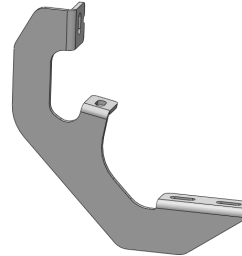
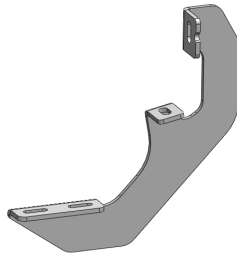
PART LIST

Front



Driver

Passenger







Scan for
Installation Video

Hardware Package A (For Bracket Installation)


Item	QTY	Description	Item	QTY	Description
A1	12	M8X1.25-30mm Hex Bolts	A3	12	M8 Lock Washers
A2	12	M8 Large Flat Washers			



A1



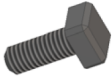
A2




A3

Hardware Package B (For Step Bar Installation)


Item	QTY	Description	Item	QTY	Description
B1	12	M6X1-20mm Square Head Bolts	B3	12	M6 Nylon Lock Nuts
B2	12	M6 Large Flat Washers			



B1



B2



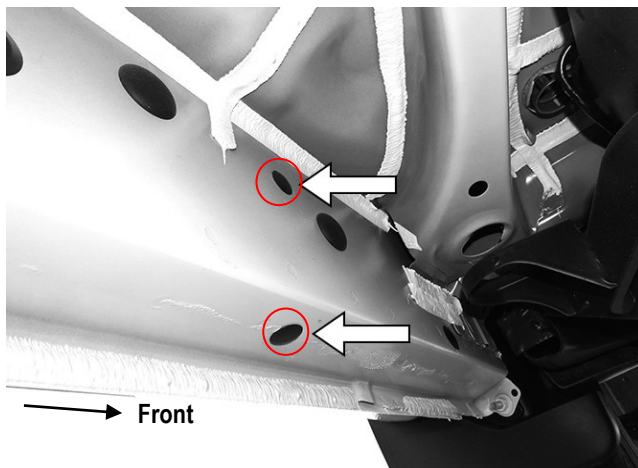
B3



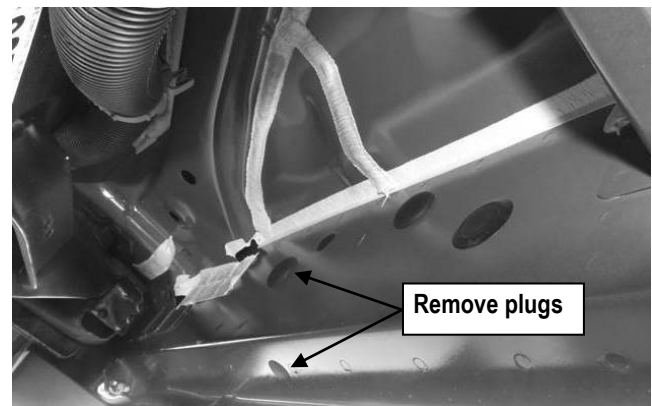
STEP 1: Locate the Driver Side Mounting Locations

- Locate the 6 plugs along the bottom edge of the body, Mounting Brackets will be bolted to the 1st, 2nd and 4th threaded mounting holes. **(Figs 1&3&4)**.
- Remove the plastic plugs from each mounting location, if required. **(Fig 2)**. Hold a Bracket up in place to help determine the mounting holes to use along the body. **(Figs 1-4)**.

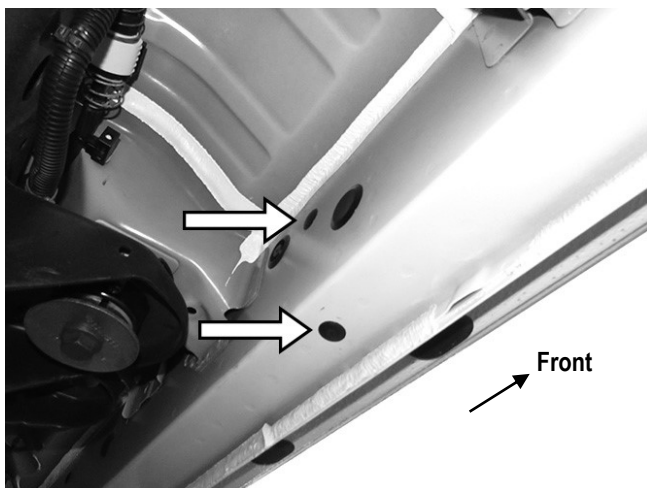
NOTE: Thread an 8mm Hex Bolt into the threaded inserts to clear paint as required.



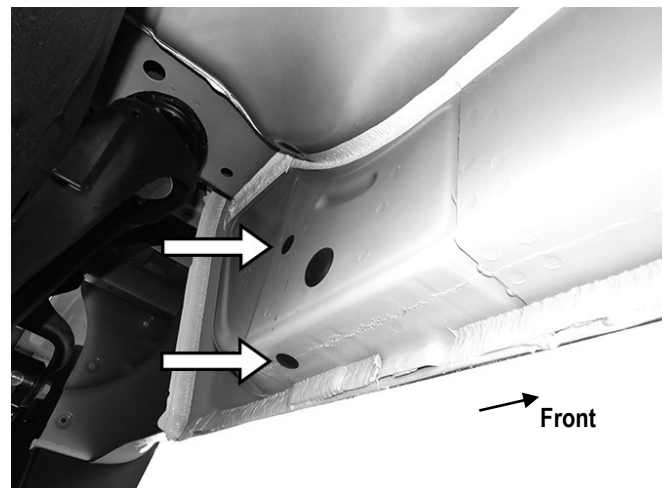
(Fig 1) Driver Side Front Mounting Location



(Fig 2) Remove Plastic Plugs to Uncover Threaded Inserts



(Fig 3) Driver Side Center Mounting Location



(Fig 4) Driver Rear Side Mounting Location

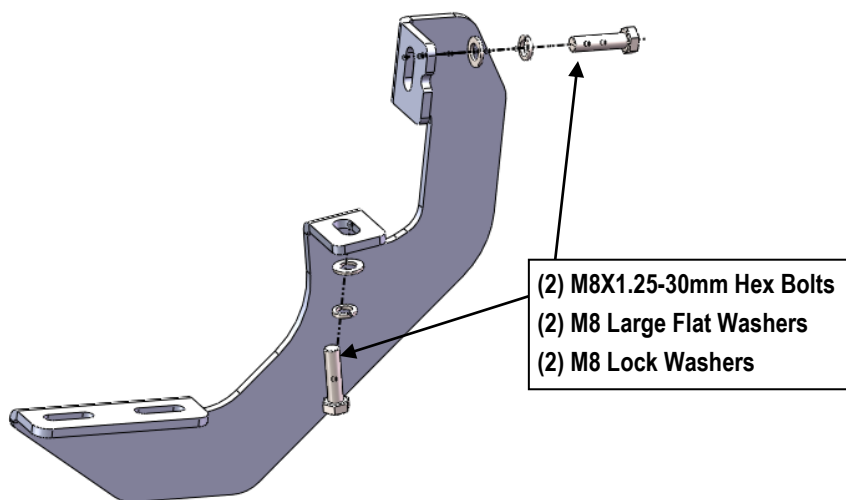


STEP 2: Install Driver Front Mounting Brackets

Bolt the (1) Mounting Bracket to the factory threaded holes on the Driver Side Front Mounting Position (**Figs 1&5**) with

- A1 (M8X1.25-30mm Hex Bolts)
- A2 (M8 Large Flat Washers)
- A3 (M8 Lock Washers)

NOTE: Do not fully tighten hardware at this time.



(Fig 5) Driver Front Mounting Bracket Installation

STEP 3: Install The Driver Center & Rear Mounting Brackets

Move to the Driver Side Center & Rear Locations of the vehicle.

Repeat **Step 2** to install the Driver Center and Rear Mounting Brackets .(**Figs 1&3&4**)

NOTE: All (3) Driver Side Mounting Brackets are universal.

STEP 4: Driver Running Board Installation

Once all (3) mounting brackets are installed, then proceed to the Running Board installation.

(1) Select a Running Board. Slide (3) B1 M6X1-20mm Square Head Bolts into each bottom channel (**Fig 6**).

(2) Carefully position the Running Board onto the (3) Mounting Brackets.

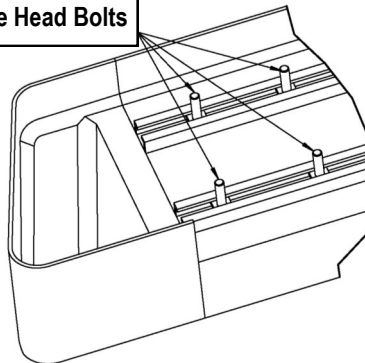
(3) Attach the Running Board to each Mounting Bracket (**Fig 7**) with

- (2) B1 M6X1-20mm Square Head Bolts
- (2) B2 M6 Large Flat Washers and
- (2) B3 M6 Nylon Lock Nuts

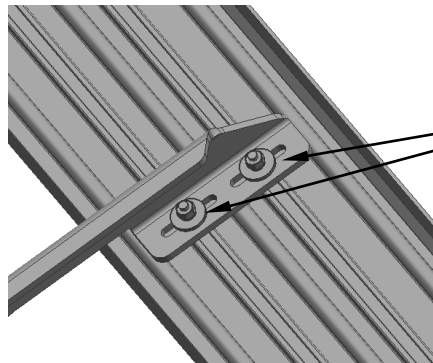
Note: Do not slide the Running Board on the Brackets or the bottom surface of the board will be damaged.



M6X1-20mm Square Head Bolts



(Fig 6) Slip M6X1-20mm Square Head Bolts Into The Bottom Channels



(2) B1 (M6X1-20mm Square Head Bolts)
(2) B2 (M6 Large Flat Washers)
(2) B3 (M6 Nylon Lock Nuts)

(Fig 7) Running Board Installed Onto Mounting Bracket

STEP 5: Driver Side Step Bar Adjustment

- Level and adjust the assembled Step Bar properly.
- Tighten all 6mm hardware with 6-7 ft-lbs torque and 8mm hardware with 16-18 ft-lbs torque.

STEP 6: The Other Side Step Bar Installation

Repeat Steps 1-5 for the Other Side Step Bar Installation.
And then installation is completed!!!

Attention

Do periodic inspections to the installation to make sure that all hardware is secure and tight.
In order to protect your bars/boards, please use mild soap/non-abrasive products for cleaning only.