



## iBoard® by APS

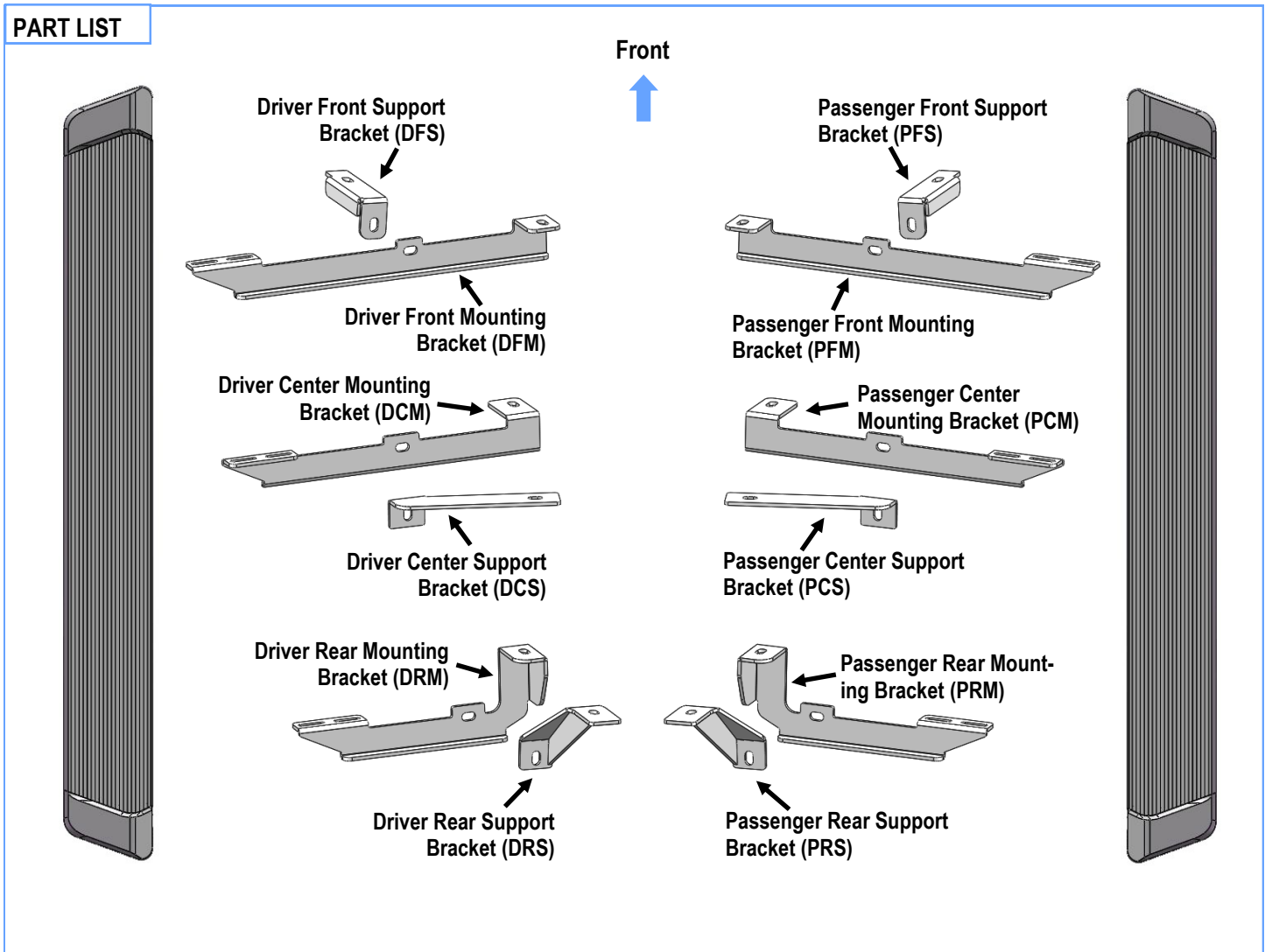
PART#: IB-R326

READ INSTRUCTIONS CAREFULLY BEFORE STARTING INSTALLATION. REMOVE CONTENTS FROM BOX AND VERIFY ALL PARTS ARE PRESENT. ASSISTANCE IS RECOMMENDED.

\*ROCKER PANEL MOUNT  
\*NO DRILLING/CUTTING REQUIRED

Fastener Size	Tightening Torque (ft-lbs)	Required
6mm	6-7	√
8mm	16-18	X
10mm	31-32	√
12mm	56-58	X
14mm	92-94	X

### PART LIST

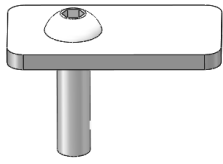


Customer Support: [info@iboardauto.com](mailto:info@iboardauto.com)

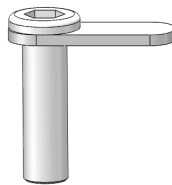


## Hardware Package A (For Bracket Installation)

Item	QTY	Description	Item	QTY	Description
1#	6	M10X40 Bolt Plates	5#	12	M10 Large Flat Washers
2#	6	M0X35 Bolt Plates	6#	12	M10 Flat Washers
3#	12	M10 Plastic Washers	7#	18	M10 Lock Washers
4#	6	M10 Hex Bolts	8#	18	M10 Hex Nuts



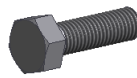
1#



2#



3#



4#



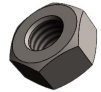
5#



6#



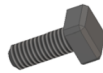
7#



8#

## Hardware Package B (For Step Bar Installation)

Item	QTY	Description	Item	QTY	Description
1#	12	M6X1-20mm Square Head Bolts	3#	12	M6 Nylon Lock Nuts
2#	12	M6 Large Flat Washers			



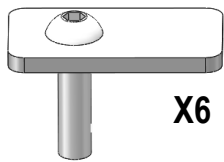
1#



2#

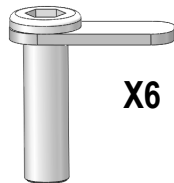


3#



X6

M10X40 Bolt Plate



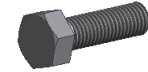
X6

M10X35 Bolt Plate



X12

M10 Plastic Washer



X6

M10X1.5-30mm Hex Bolt



X12

M10 Large Flat Washer



X12

M10 Flat Washer



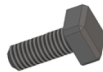
X18

M10 Lock Washer



X18

M10X1.5 Hex Nut



X12

M6X1-20mm Square Head Bolt



X12

M6 Large Flat Washer

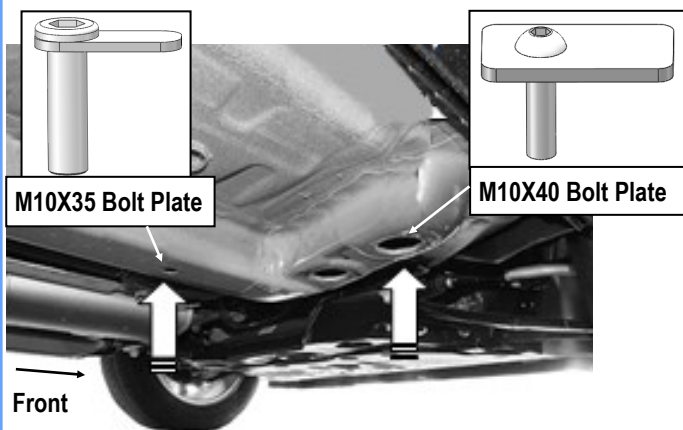


X12

M6X1 Nylon Lock Nut

## STEP 1

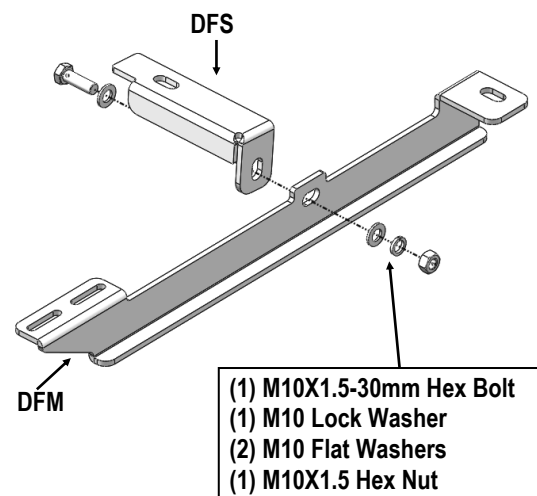
Start the installation from the Driver Side Front Mounting Location of the vehicle. Insert (1) M10X35 Bolt Plate into the small hole, insert (1) M10X40 Bolt Plate into the large hole as show on, (Fig 1).



(Fig 1) Insert The M10 Bolt Plates  
(Driver Side Front Mounting Location)

## STEP 2

Assemble the Driver Front Mounting Bracket (DFM) and the Driver Front Support Bracket (DFS) with (1) M10X1.5-30mm Hex Bolt, (2) M10 Flat Washers, (1) M10 Lock Washer and (1) M10X1.5 Hex Nut, (Fig 2). Do not fully tighten at this time.



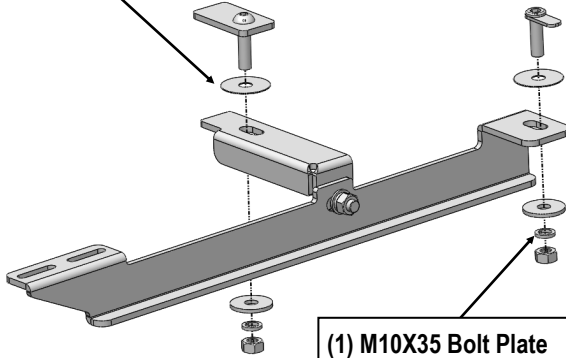
(Fig 2) Driver Side Front Brackets Assembly



## STEP 3

Attach the Driver Front Mounting Bracket (**DFM**) to the installed M10X35 Bolt Plates with (1) M10 Plastic Washers, (1) M10 Large Flat Washer, (1) M10 Lock Washer and (1) M10X1.5 Hex Nut; attach the Driver Front Support Bracket (**DFS**) to the installed M10X40 Bolt Plates with (1) M10 Plastic Washer, (1) M10 Large Flat Washer, (1) M10 Lock Washer and (1) M10X1.5 Hex Nut, (**Fig 3**). Do not fully tighten at this time.

- (1) M10X40 Bolt Plate
- (1) M10 Plastic Washer
- (1) M10 Large Flat Washer
- (1) M10 Lock Washer
- (1) M10X1.5 Hex Nut



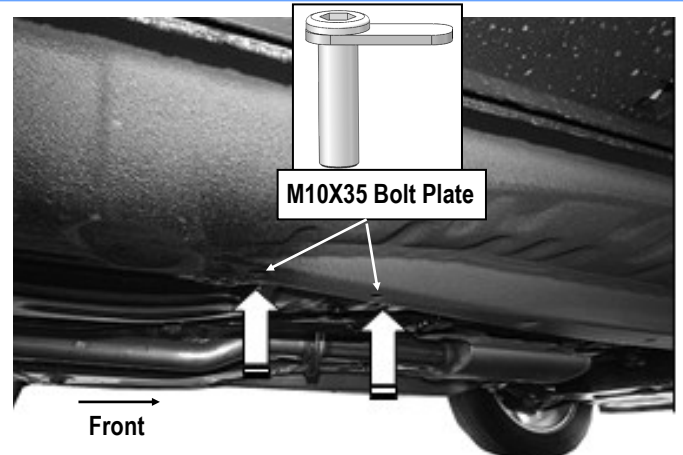
- (1) M10X35 Bolt Plate
- (1) M10 Plastic Washer
- (1) M10 Large Flat Washer
- (1) M10 Lock Washer
- (1) M10X1.5 Hex Nut

(Fig 3) Driver Side Front Brackets Installation

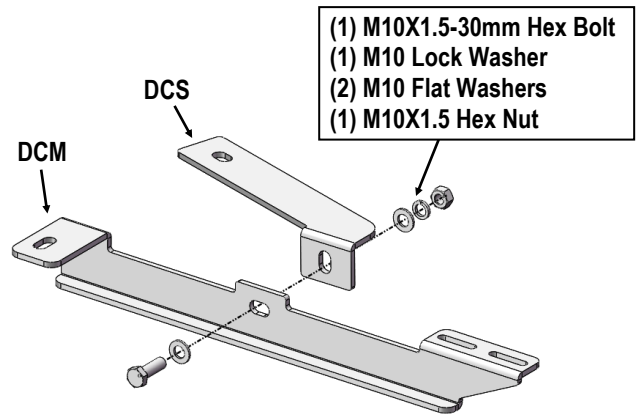
## STEP 4

Move to the Driver Side Center Mounting Location, (**Fig 4**). Repeat **Steps 1—3** to assemble and install the Driver Center Mounting Bracket (**DCM**) and Driver Center Support Bracket (**DCS**), (**Figs 5 & 6**). Do not fully tighten at this time.

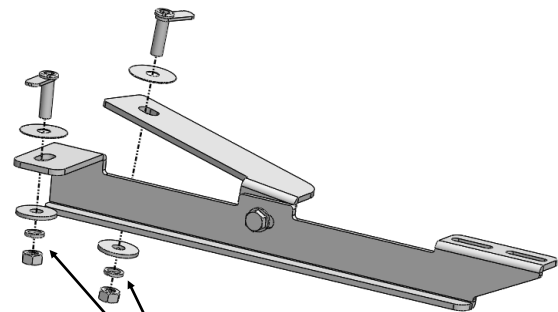
**Note:** Only use (2) M10X35 Bolt Plates for installation.



(Fig 4) Insert (2) M10X35 Bolt Plates  
(Driver Side Center Mounting Location)



(Fig 5) Driver Side Center Brackets Assembly



- (2) M10X35 Bolt Plates
- (2) M10 Plastic Washers
- (2) M10 Large Flat Washers
- (2) M10 Lock Washers
- (2) M10X1.5 Hex Nuts

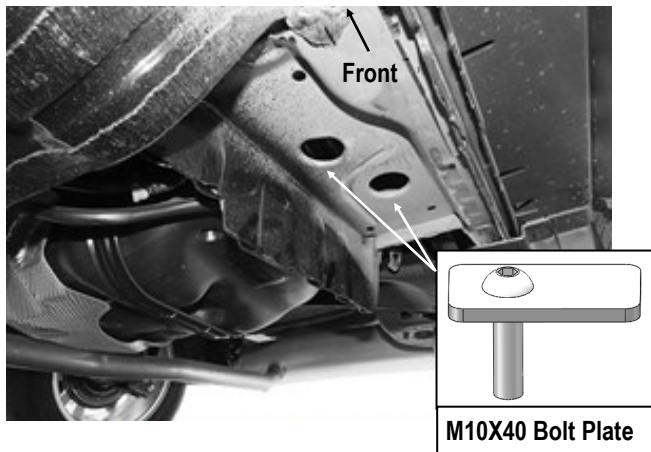
(Fig 6) Driver Side Center Brackets Installation



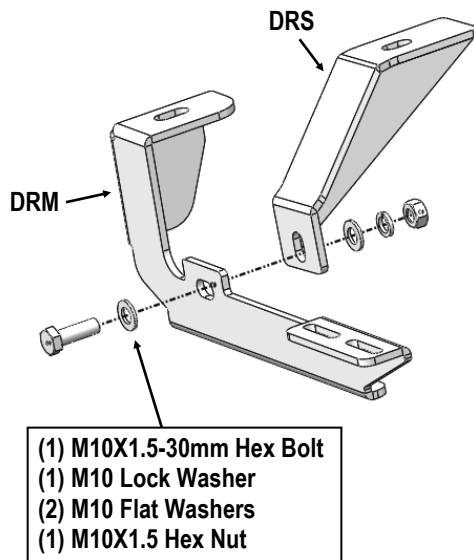
## STEP 5

Move to the Driver Side Rear Mounting Location, (Fig 7). Repeat **Steps 1-3** to assemble and install the Driver Rear Mounting Bracket (DRM) and Driver Rear Support Bracket (DRS), (Figs 8 & 9). Do not fully tighten at this time.

**Note:** Only use (2) M10X40 Bolt Plates for installation.

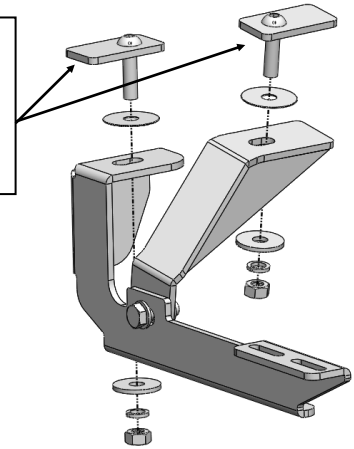


(Fig 7) Insert (2) M10X40 Bolt Plates  
(Driver Side Rear Mounting Location)



(Fig 8) Driver Side Rear Brackets Assembly

- (2) M10X40 Bolt Plates
- (2) M10 Plastic Washers
- (2) M10 Large Flat Washers
- (2) M10 Lock Washers
- (2) M10X1.5 Hex Nuts



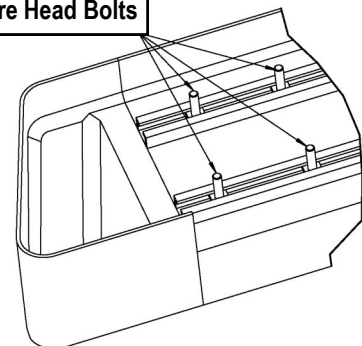
(Fig 9) Driver Side Rear Brackets Installation

## STEP 6

Once all (3) mounting brackets are installed. Select a Running Board. Slip (3) M6X1-20mm Square Head Bolts into each bottom channel (Fig 10). Carefully position the Running Board onto the (3) Mounting Brackets. Attach the Running Board to each Mounting Bracket with (2) M6X1-20mm Square Head Bolts, (2) M6 Large Flat Washers and (2) M6 Nylon Lock Nuts (Fig 11). Do not fully tighten at this time.

**IMPORTANT:** Do not slide the Running Board on the Brackets or the bottom surface of the board will be damaged.

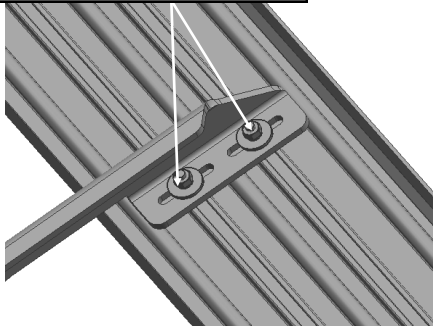
- M6X1-20mm Square Head Bolts



(Fig 10) Slip M6X1-20mm Square Head Bolts Into The Bottom



- (2) M6X1-20mm Square Head Bolts
- (2) M6 Large Flat Washers
- (2) M6 Nylon Lock Nuts



(Fig 11) Running Board Installed Onto Mounting Bracket

## STEP 7

Level and adjust the Running Board and fully tighten all hardware.

**Important:** Please follow the recommended Tightening Torques shown in the table on page 1. Don't over tighten, or the nuts/bolts will be damaged.

## STEP 8

Repeat **Steps 1-7** for the other side Running Board installation. The installation is completed.

### Attention

Do periodic inspections to the installation to make sure that all hardware is secure and tight.

In order to protect your bars/boards, please use mild soap/non-abrasive products for cleaning only.