



iBoard® Series

INSTALLATION INSTRUCTIONS

PART#: IB-R296

BEFORE INSTALLATION

REMOVE CONTENTS FROM BOX. VERIFY ALL PARTS ARE PRESENT. READ INSTRUCTIONS CAREFULLY BEFORE STARTING INSTALLATION. ASSISTANCE IS RECOMMENDED. THANK YOU FOR CHOOSING OUR PRODUCT!

These instructions are provided for reference only. We strongly recommend installation by a professional installer for the best results. We are not responsible for any damage caused during installation.

***ROCKER PANEL MOUNT**

***NO DRILLING REQUIRED**

Torque Value

| Fastener Size | Tightening Torque (ft-lbs) | Required |
|---------------|----------------------------|----------|
| 6mm | 6-7 | √ |
| 8mm | 16-18 | √ |
| 10mm | 31-32 | X |
| 12mm | 56-58 | X |
| 14mm | 92-94 | X |



Scan for
Installation Video

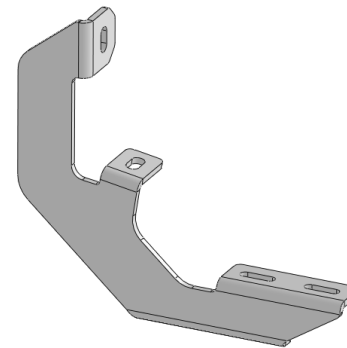
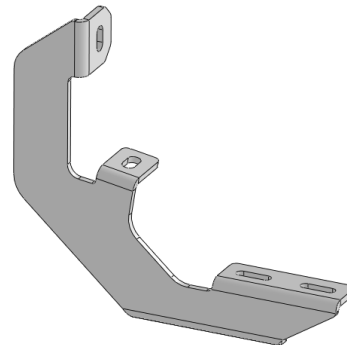
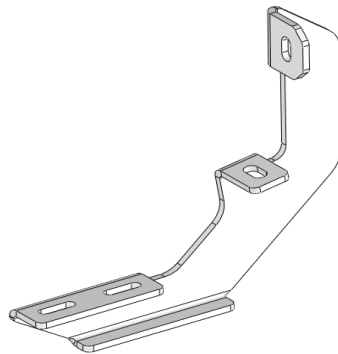
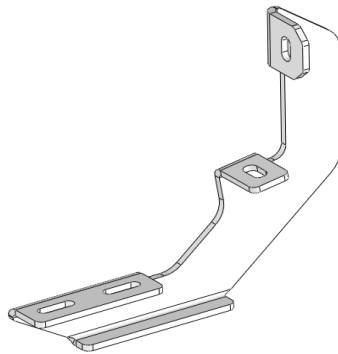
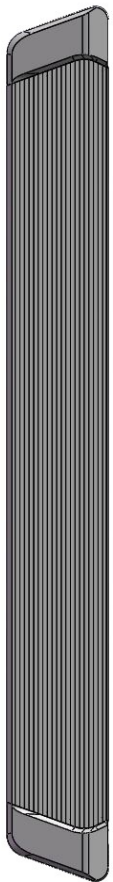
| Mounting Bracket List | | | |
|-----------------------|-----|------------------|---|
| Item | QTY | Part Name | Description |
| 1# | 4 | Mounting Bracket | Mounting Brackets for Driver / Passenger side (All Mounting Brackets are Universal) |

PART LIST

Front
↑

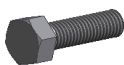


Driver

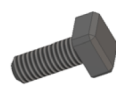


Passenger





Scan for
Installation Video

| Hardware Package A (For Bracket Installation) | | | | | |
|---|-----|------------------------|------|-----|-----------------|
| Item | QTY | Description | Item | QTY | Description |
| A1 | 8 | M8X1.25-30mm Hex Bolts | A3 | 8 | M8 Lock Washers |
| A2 | 8 | M8 Large Flat Washers | | | |
| <div style="display: flex; justify-content: space-around; align-items: center;"> <div style="text-align: center;">  <p>A1</p> </div> <div style="text-align: center;">  <p>A2</p> </div> <div style="text-align: center;">  <p>A3</p> </div> </div> | | | | | |

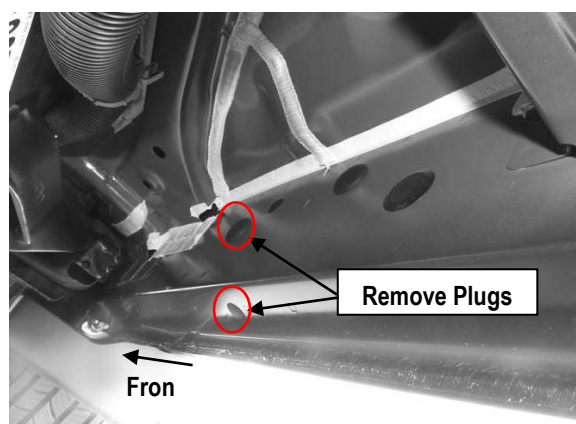
| Hardware Package B (For Step Bar Installation) | | | | | |
|--|-----|-----------------------------|------|-----|--------------------|
| Item | QTY | Description | Item | QTY | Description |
| B1 | 8 | M6X1-20mm Square Head Bolts | B3 | 8 | M6 Nylon Lock Nuts |
| B2 | 8 | M6 Large Flat Washers | | | |
| <div style="display: flex; justify-content: space-around; align-items: center;"> <div style="text-align: center;">  <p>B1</p> </div> <div style="text-align: center;">  <p>B2</p> </div> <div style="text-align: center;">  <p>B3</p> </div> </div> | | | | | |



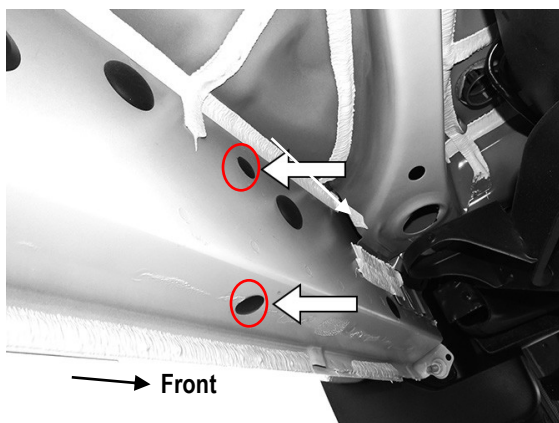
STEP 1: Locate Driver Side Mounting Locations

- Locate the plastic plugs along the bottom edge of the body panel. Mounting Brackets will be attached to the threaded mounting holes at the front and rear of the cab. **(Figs 1-3)**
- Remove the plastic plugs from each mounting location if equipped. **(Fig 1)**
- Hold a Bracket up in place to help determine the correct mounting holes to use along the body.

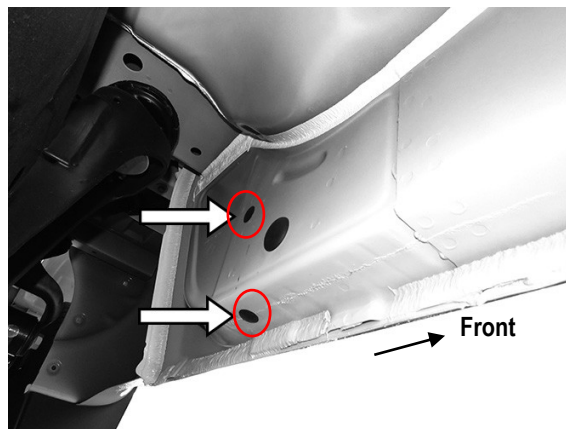
NOTE: Thread (1) M8X1.25-30 Hex Bolt into the threaded inserts to clear paint as required.



(Fig 1) Remove The Plastic Plugs (Typical)



(Fig 2) Driver Side Front Mounting Position (Typical)



(Fig 3) Driver Side Rear Mounting Position (Typical)

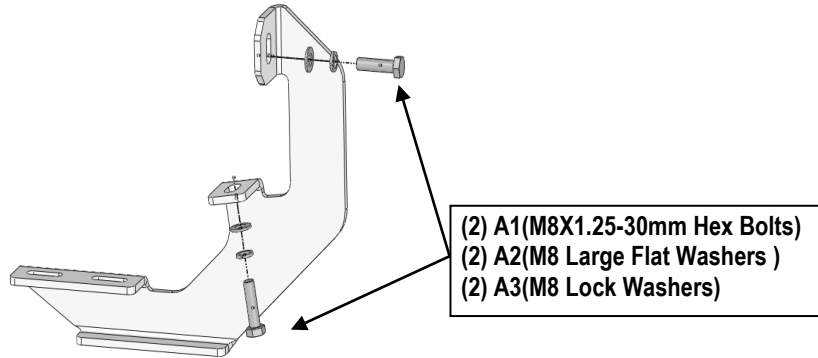


STEP 2: Install Driver Front Mounting Bracket

Attach (1) Mounting Bracket to the factory threaded holes (**Figs 2&4**) on Driver Side Front Mounting Position with :

- (2) A1 (M8X1.25-30 Hex Bolts)
- (2) A2 (M8 Large Flat Washers)
- (2) A3 (M8 Lock Washers)

Note: Do not fully tighten at this time.



(Fig 4) Typical Mounting Bracket Installation

STEP 3: Install Driver Rear Mounting Bracket

Move to the Driver Side Rear Mounting Position (**Fig 3**). Repeat **Step 2** to install (1) Mounting Bracket (**Fig 4**).

Note: *(4) Mounting Brackets are universal.

*** Do not fully tighten hardware at this time.**

STEP 4: Driver Side Running Board Installation

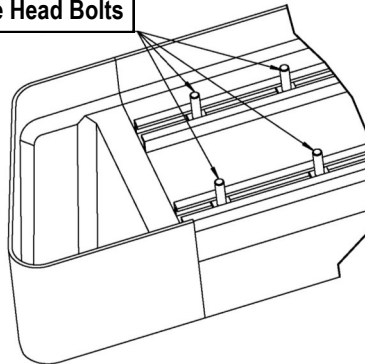
Once all (2) mounting brackets are installed, then proceed to the Running Board installation.

- (1) Select a Running Board. Slide (2) B1 (M6X1-20mm Square Head Bolts) into each bottom channel (**Fig 5**).
- (2) Carefully position the Running Board onto the (2) Mounting Brackets.
- (3) Attach the Running Board to each Mounting Bracket (**Fig 6**) with
 - (2) B1 (M6X1-20mm Square Head Bolts)
 - (2) B2 (M6 Large Flat Washers)
 - (2) B3 (M6 Nylon Lock Nuts)

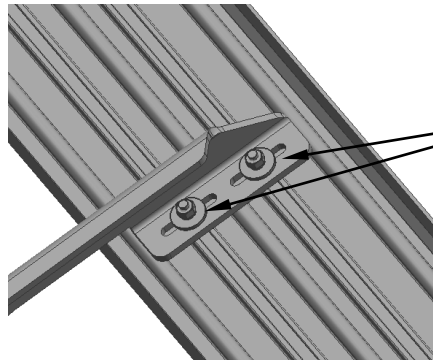
Note: Do not slide the Running Board on the Brackets or the bottom surface of the board will be damaged.



M6X1-20mm Square Head Bolts



(Fig 5) Slip M6X1-20mm Square Head Bolts Into The Bottom Channels



(2) B1 (M6X1-20mm Square Head Bolts)
(2) B2 (M6 Large Flat Washers)
(2) B3 (M6 Nylon Lock Nuts)

(Fig 6) Running Board Installed Onto Mounting Bracket

STEP 5: Driver Side Running Board Adjustment

- Level and adjust the Running Board properly.
- Tighten all 6mm hardware with 6-7 ft-lbs torque and 8mm hardware with 16-18 ft-lbs torque.

STEP 6: The Other Side Running Board Installation

Repeat Steps 1-5 for the Other Side Running Board Installation.

And then installation is completed!!!

Attention

Do periodic inspections to the installation to make sure that all hardware is secure and tight.
In order to protect your bars/boards, please use mild soap/non-abrasive products for cleaning only.