



## iBoard® by APS

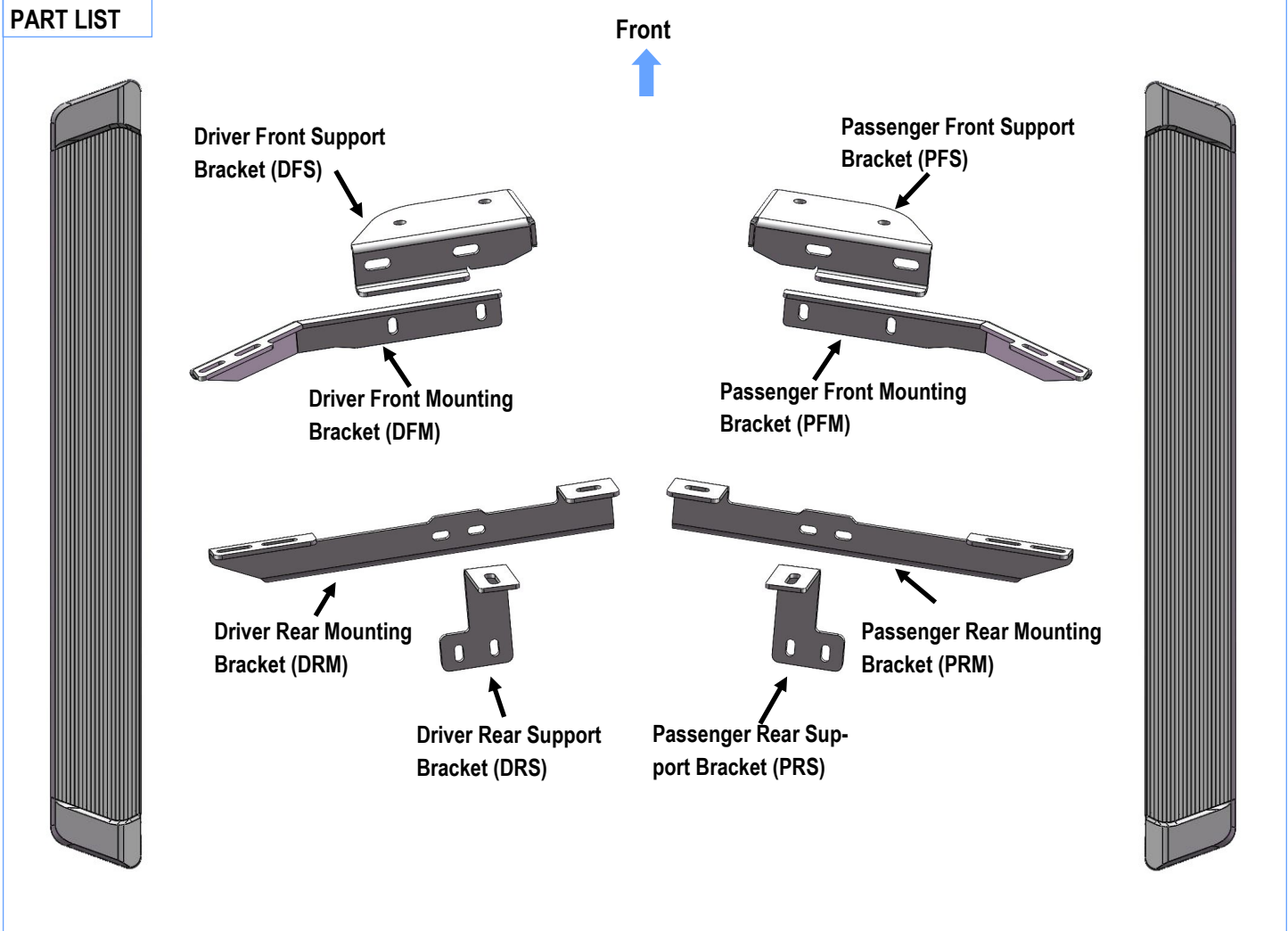
PART#: IB-R233

**READ INSTRUCTIONS CAREFULLY BEFORE STARTING INSTALLATION. REMOVE CONTENTS FROM BOX AND VERIFY ALL PARTS ARE PRESENT. ASSISTANCE IS RECOMMENDED.**

**\*ROCKER PANEL MOUNT  
\*NO DRILLING REQUIRED**

Fastener Size	Tightening Torque (ft-lbs)	Required
6mm	6-7	√
8mm	16-18	X
10mm	31-32	√
12mm	56-58	X
14mm	92-94	X

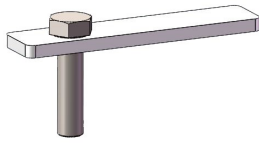
### PART LIST



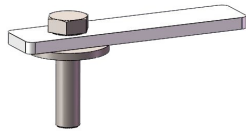


### Hardware Package A (For Bracket Installation)

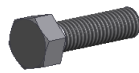
Item	QTY	Description	Item	QTY	Description
1#	2	M10X45 Bolt Plates	5#	16	M10 Flat Washers
2#	6	M10X40 Bolt Plates	6#	16	M10 Lock Washers
3#	8	M10X1.5-30mm Hex Bolts	7#	16	M10 Hex Nuts
4#	8	M10 Large Flat Washers			



1#



2#



3#



4#



5#



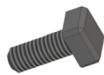
6#



7#

### Hardware Package B (For Step Bar Installation)

Item	QTY	Description	Item	QTY	Description
1#	8	M6X1-20mm Square Head Bolts	3#	8	M6 Nylon Lock Nuts
2#	8	M6 Large Flat Washers			



1#



2#

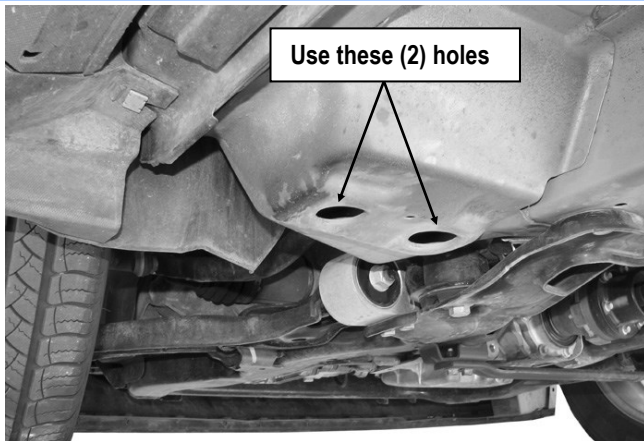


3#



## STEP 1

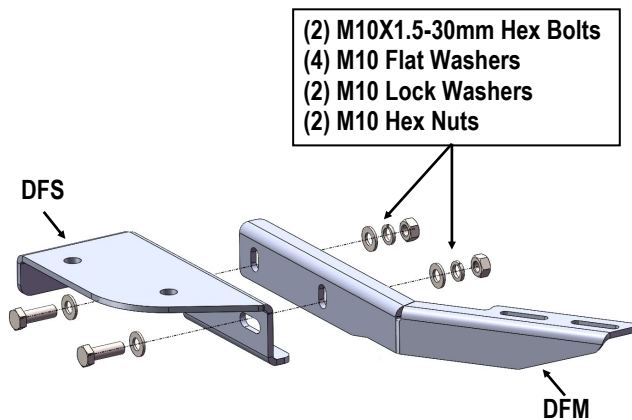
Starting from the driver side front of the vehicle. Locate the (2) large factory holes in the floor panel by the front tires, **(Fig 1)**.



**(Fig 1) Driver Side Front Mounting Location**

## STEP 2

Assemble Driver Front Mounting Bracket (**DFM**) and Driver Front Support Bracket (**DFS**) with (2) M10X1.5-30mm Hex Bolts, (4) M10 Flat Washers, (2) M10 Lock Washers and (2) M10 Hex Nuts, **(Fig 2)**. Do not fully tighten hardware at this time.

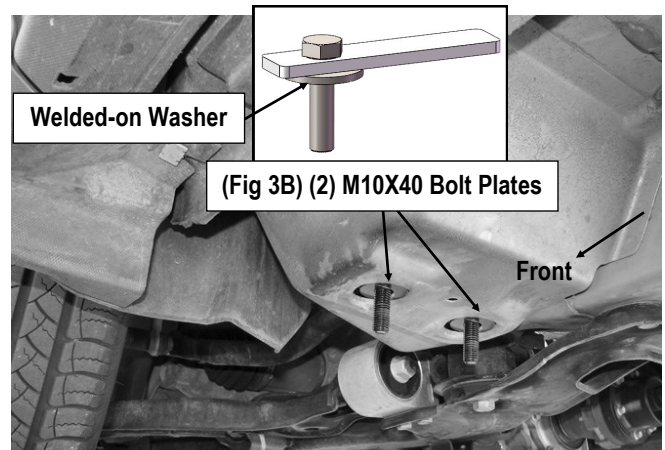


**(Fig 2) Driver Side Front Brackets Assembly**

## STEP 3

Select (2) M10x40 Bolt Plates. Insert (1) M10x40 Bolt Plate into each of the factory holes, **(Fig 3A)**.

**IMPORTANT:** Once you have inserted the Bolt Plates, make sure that the welded washer on each Bolt Plate is in the center of the factory hole. **(Figs 3A & 3B)**.



**(Fig 3A) (2) M10x40 Bolt Plates Installed  
(On Driver Side Front Mounting Location)**

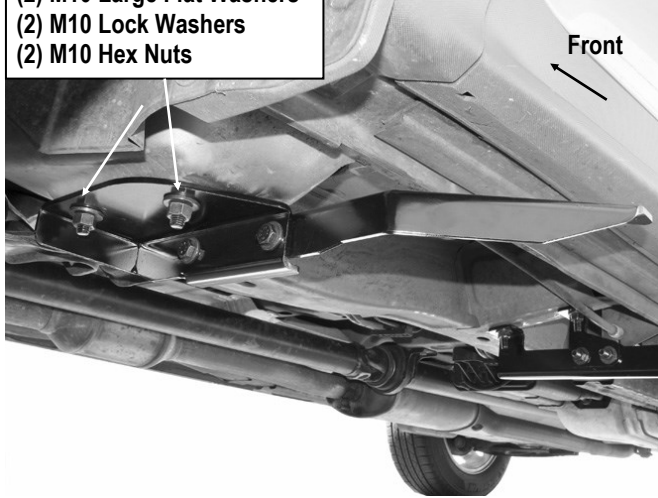
## STEP 4

Attach the Assembled Driver Front Mounting Bracket (**DFM**) to the installed (2) M10x40 Bolt Plates with (2) M10 Large Flat Washers, (2) M10 Lock Washers and (2) M10 Hex Nuts, **(Fig 4)**.

**NOTE:** Make sure that the welded-on washers are fully seated in the large openings on the floor before tightening hardware. Do not fully tighten hardware at this time.



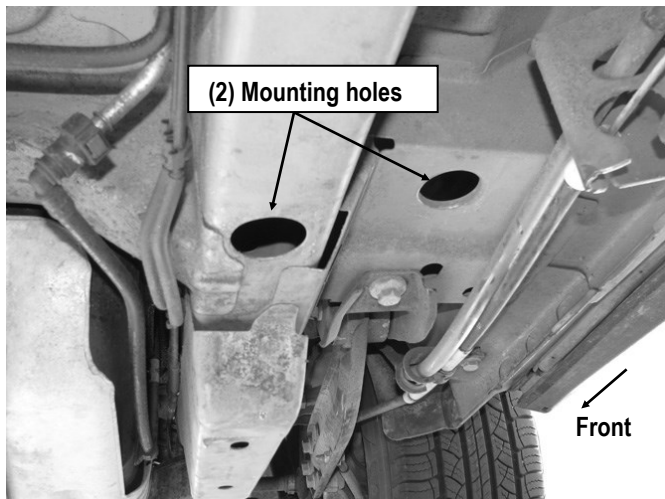
- (2) M10x40 Bolt Plates
- (2) M10 Large Flat Washers
- (2) M10 Lock Washers
- (2) M10 Hex Nuts



(Fig 4) Passenger Side Front Brackets Installed

## STEP 5

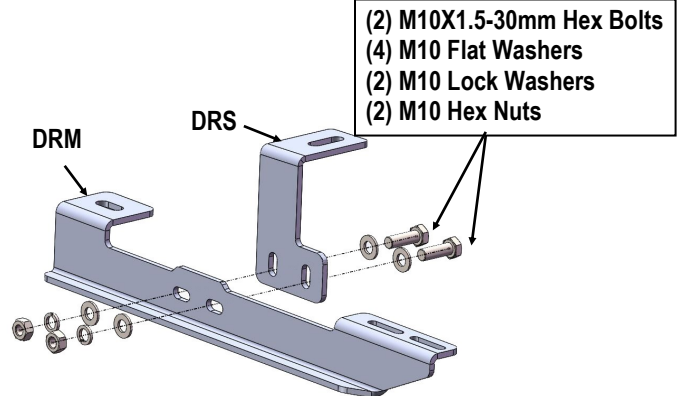
Move to the Driver side rear mounting location, (Fig 5). Locate the (2) large factory holes at the bottom of the frame channel.



(Fig 5) Driver Side Rear Mounting Location

## STEP 6

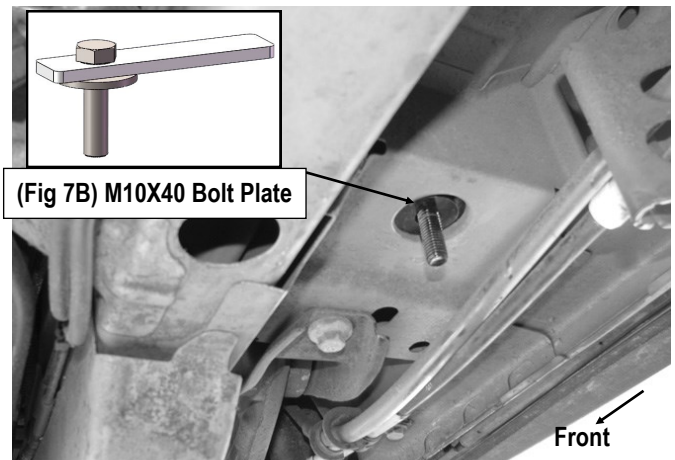
Repeat **Step 2** to assemble Driver Rear Mounting Bracket (DRM) and Driver Rear Support Bracket (DRS), (Fig 6). Do not fully tighten hardware at this time.



(Fig 6) Driver Side Rear Brackets Assembly

## STEP 7

Insert (1) M10x40 Bolt Plate into the large hole in the suspension mount as described in **Step 3**, (Figs 7A & 7B). Next, locate the factory hole in the bottom of the inner frame channel. Insert (1) M10x45 Bolt Plate, (no welded washer), into the hole in the bottom of the frame channel, (Figs 8A & 8B).



(Fig 7A) M10X40 Bolt Plate Installed  
(On Driver Side Rear Mounting Location)



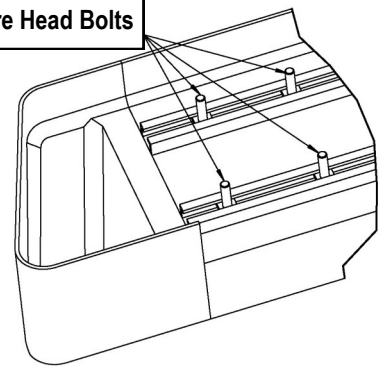


## STEP 9

Once all (2) mounting brackets are installed. Select a Running Board. Slip (2) M6X1-20mm Square Head Bolts into each bottom channel (Fig 10). Carefully position the Running Board onto the (2) Mounting Brackets. Attach the Running Board to each Mounting Brackets with (2) M6x1-20mm Square Head Bolts, (2) M6 Large Flat Washers and (2) M6 Nylon Lock Nuts (Fig 11). Do not fully tighten at this time.

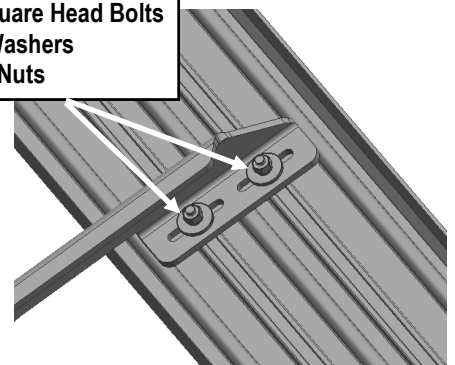
**IMPORTANT:** Do not slide the Running Board on the Brackets or the bottom surface of the board will be damaged.

M6X1-20mm Square Head Bolts



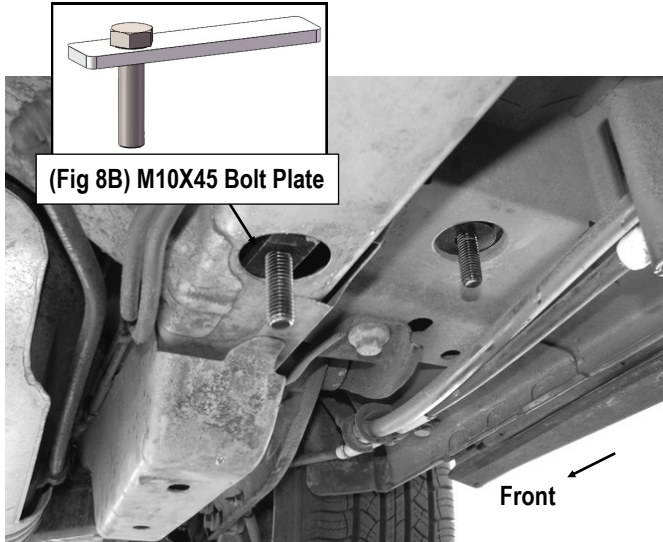
(Fig 10) Slip M6X1-20mm Square Head Bolts Into The Bottom Channels

(2) M6X1-20mm Square Head Bolts  
(2) M6 Large Flat Washers  
(2) M6 Nylon Lock Nuts



(Fig 11) Running Board Installed Onto Mounting Bracket

(Fig 8B) M10X45 Bolt Plate



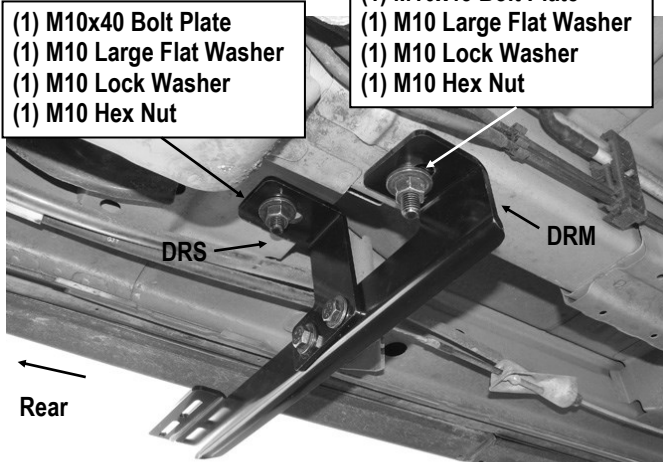
(Fig 8A) M10x45 Bolt Plate Installed  
(On Driver Side Rear Mounting Location)

## STEP 8

Attach the assembled Driver Rear Mounting Bracket (DRM) to the installed (2) M10 Bolt Plates with (2) M10 Large Flat Washers, (2) M10 Lock Washers and (2) M10 Hex Nuts. (Fig 9). Do not fully tighten hardware at this time.

(1) M10x40 Bolt Plate  
(1) M10 Large Flat Washer  
(1) M10 Lock Washer  
(1) M10 Hex Nut

(1) M10x45 Bolt Plate  
(1) M10 Large Flat Washer  
(1) M10 Lock Washer  
(1) M10 Hex Nut



(Fig 9) Passenger Side Rear Brackets Installed



## STEP 10

Level and adjust the Running Board and fully tighten all hardware.

**Important:** Please follow the recommended Tightening Torques shown in the table on page 1. Don't over tighten, or the nuts/bolts will be damaged.

## STEP 11

Repeat **Steps 1-10** for the other side Running Board installation. The installation is completed.

### Attention

Do periodic inspections to the installation to make sure that all hardware is secure and tight.

In order to protect your bars/boards, please use mild soap/non-abrasive products for cleaning only.