



# iBoard® Series

## INSTALLATION INSTRUCTIONS

**PART#: IB-R222**

### BEFORE INSTALLATION

REMOVE CONTENTS FROM BOX. VERIFY ALL PARTS ARE PRESENT. READ INSTRUCTIONS CAREFULLY BEFORE STARTING INSTALLATION. ASSISTANCE IS RECOMMENDED. THANK YOU FOR CHOOSING OUR PRODUCT!

These instructions are provided for reference only. We strongly recommend installation by a professional installer for the best results. We are not responsible for any damage caused during installation.

**\*ROCKER PANEL MOUNT**

**\*NO DRILLING REQUIRED**

### Torque Value

Fastener Size	Tightening Torque (ft-lbs)	Required
6mm	6-7	√
8mm	16-18	√
10mm	31-32	X
12mm	56-58	X
14mm	92-94	X



Scan for  
Installation Video

Mounting Bracket List			
Item	QTY	Bracket Label	Description
1#	8	DFM	Mounting Brackets for Driver /Passenger Side

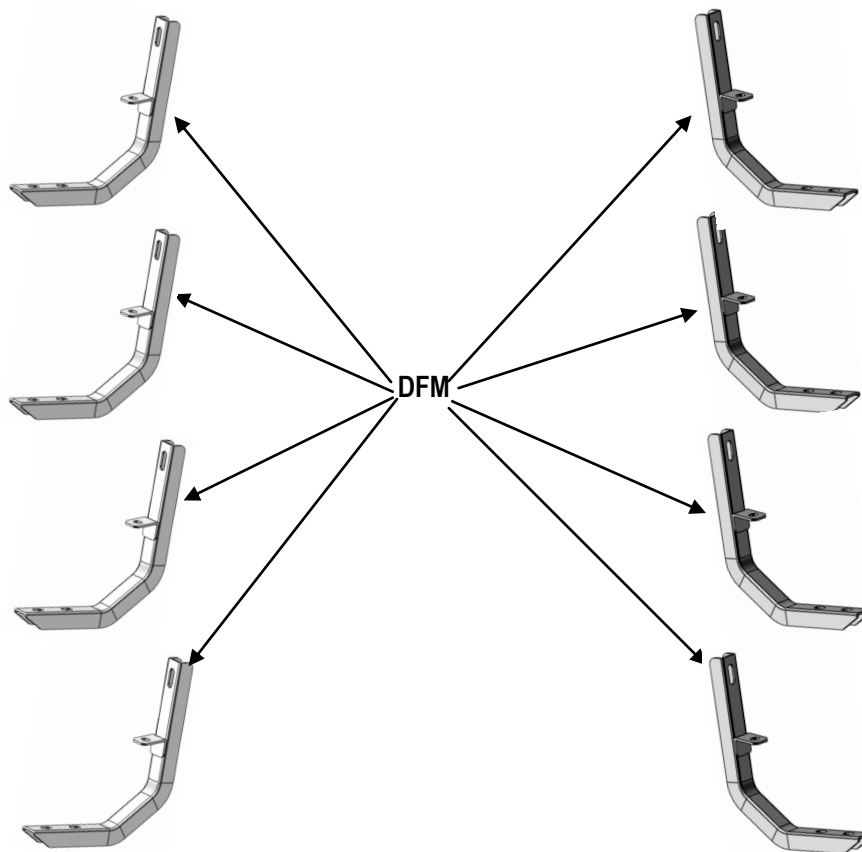
#### PART LIST

**Driver**

**Front**






**Passenger**

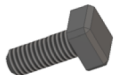




**NOTE: All (8) Mounting Brackets are universal.**



Scan for  
Installation Video

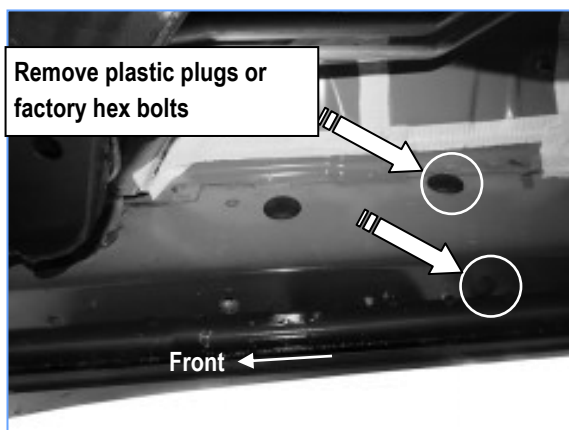
Hardware Package A (For Bracket Installation)		
Item	QTY	Description
A1	16	M8X1.25-30mm Hex Bolts
A2	16	M8 Flat Washers
A3	16	M8 Lock Washers
<div style="display: flex; justify-content: space-around; align-items: center;"> <div style="text-align: center;">  <p>A1</p> </div> <div style="text-align: center;">  <p>A2</p> </div> <div style="text-align: center;">  <p>A3</p> </div> </div>		

Hardware Package B (For Running Board Installation)					
Item	QTY	Description	Item	QTY	Description
B1	16	M6X1-20mm Square Head Bolts	B3	16	M6 Nylon Lock Nuts
B2	16	M6 Large Flat Washers			
<div style="display: flex; justify-content: space-around; align-items: center;"> <div style="text-align: center;">  <p>B1</p> </div> <div style="text-align: center;">  <p>B2</p> </div> <div style="text-align: center;">  <p>B3</p> </div> </div>					

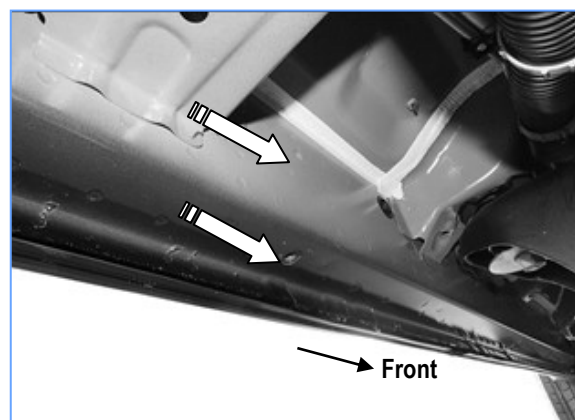


## STEP 1: Locate Passenger Side Mounting Locations

- Locate the Passenger Side Mounting Locations along the inner side of the body panel of the vehicle (Figs 1-4).
- Mounting Brackets will be install to the four mounting locations.
- Remove the plastic plugs or factory hex bolts from the mounting locations if equipped (Fig 1).



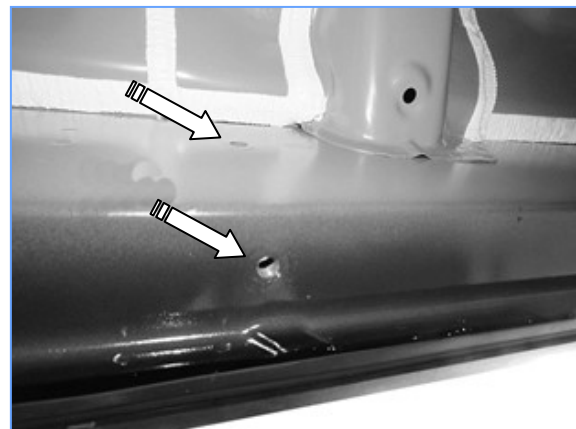
(Fig 1) Passenger Side Front Mounting Location



(Fig 2) Passenger Side 2nd Mounting Location



(Fig 3) Passenger Side 3rd Mounting Location



(Fig 4) Passenger Rear Mounting Location



## STEP 2: Install (4) Passenger Side Mounting Brackets

(1) Install (1) Mounting Bracket (**DFM**) to the Passenger Side front mounting Location (**Figs 1&5**) by using:

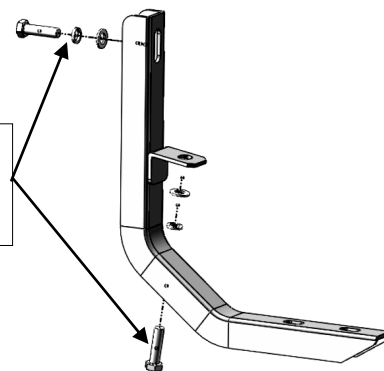
- (2) A1 (M8X1.25-30mm Hex Bolts)
- (2) A2 (M8 Flat Washers)
- (2) A3 (M8 Lock Washers)

(2) Repeat to install the mounting brackets to the 2nd, 3rd and rear mounting locations. (**Figs 2-5**)

**NOTE: \* All (8) Mounting Brackets are universal.**

**\* Don't fully tighten the hardware at this time.**

(2) A1(M8X1.25-30mm Hex Bolts)  
(2) A2 (M8 Flat Washers)  
(2) A3 (M8 Lock Washers)



(Fig 5):Typical Mounting Bracket Installation

## STEP 3: Driver Running Board Installation

Once all (4) mounting brackets are installed, then proceed to the Running Board installation.

(1) Select a Running Board. Slide (4) B1 M6X1-20mm Square Head Bolts into each bottom channel (**Fig 6**).

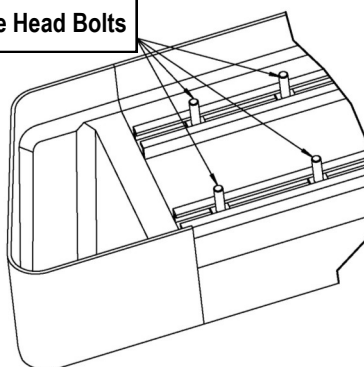
(2) Carefully position the Running Board onto the (4) Mounting Brackets.

(3) Attach the Running Board to each Mounting Bracket (**Fig 7**) with

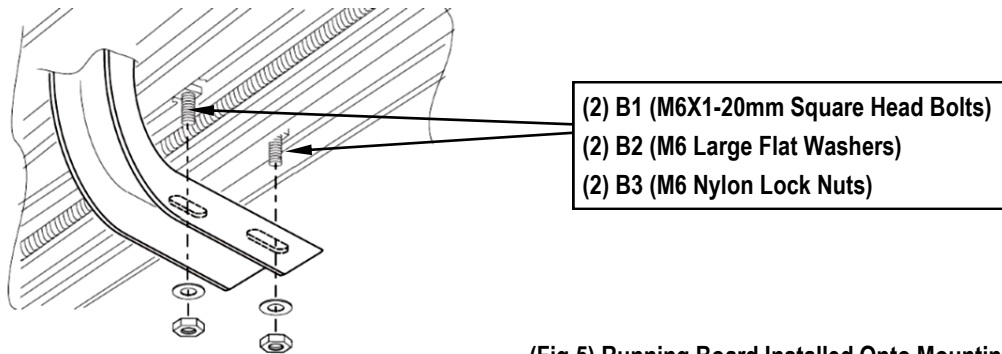
- (2) B1 M6X1-20mm Square Head Bolts
- (2) B2 M6 Large Flat Washers and
- (2) B3 M6 Nylon Lock Nuts

**Note: Do not slide the Running Board on the Brackets or the bottom surface of the board will be damaged.**

M6X1-20mm Square Head Bolts



(Fig 6) Slip M6X1-20mm Square Head Bolts Into The Bottom Channels



(Fig 5) Running Board Installed Onto Mounting Bracket

## STEP 4: Driver Side Running Board Adjustment

- Level and adjust the Running Board properly.
- Tighten all 6mm hardware with 6-7 ft-lbs torque and 8mm hardware with 16-18 ft-lbs torque.

## STEP 5: The Other Side Running Board Installation

Repeat Steps 2-4 for the Other Side Running Board Installation.  
And then installation is completed!!!

### Attention

Do periodic inspections to the installation to make sure that all hardware is secure and tight.  
In order to protect your bars/boards, please use mild soap/non-abrasive products for cleaning only.