



iBoard® Series

INSTALLATION INSTRUCTIONS

PART#: IB-R197/R198

BEFORE INSTALLATION

REMOVE CONTENTS FROM BOX. VERIFY ALL PARTS ARE PRESENT. READ INSTRUCTIONS CAREFULLY BEFORE STARTING INSTALLATION. ASSISTANCE IS RECOMMENDED. THANK YOU FOR CHOOSING OUR PRODUCT!

These instructions are provided for reference only. We strongly recommend installation by a professional installer for the best results. We are not responsible for any damage caused during installation.

***ROCKER PANEL MOUNT**

***NO DRILLING REQUIRED**

Torque Value

Fastener Size	Tightening Torque (ft-lbs)	Required
6mm	6-7	√
8mm	16-18	√
10mm	31-32	X
12mm	56-58	X
14mm	92-94	X



Scan for
Installation Video

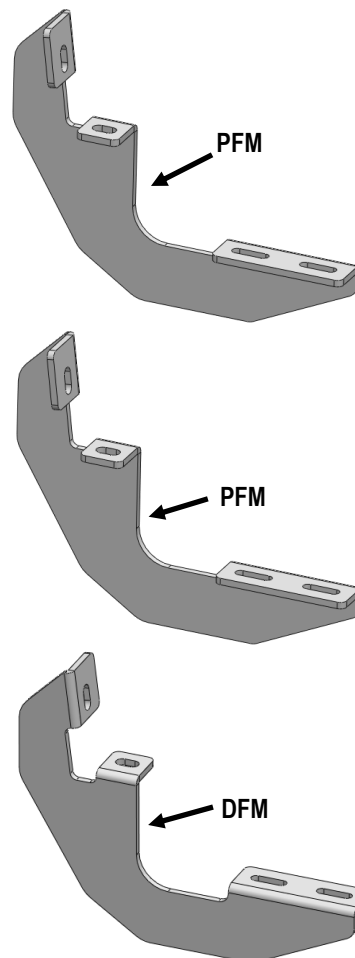
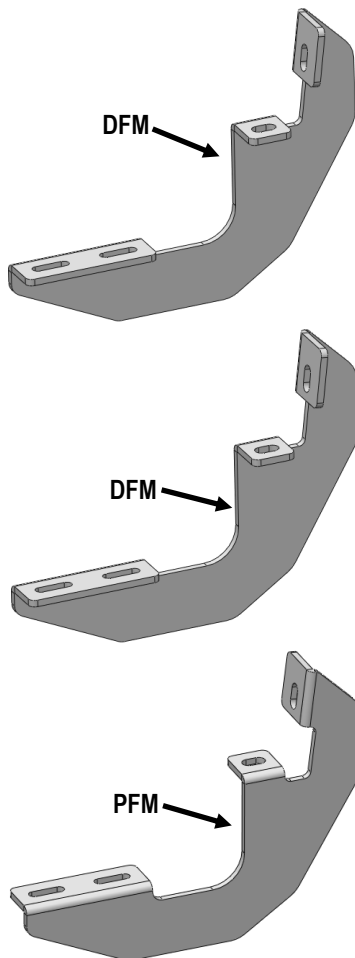
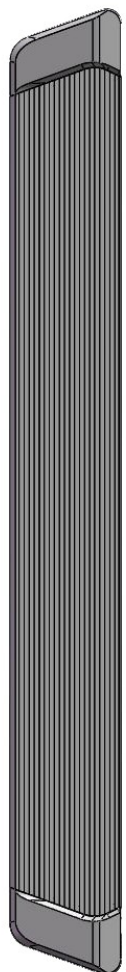
Mounting Bracket List			
Item	QTY	Bracket Label	Description
1#	3	DFM	Mounting Bracket for Driver Front / Center / Passenger Rear
2#	3	PFM	Mounting Bracket for Passenger Front / Center / Driver Rear

PART LIST

Driver Side

Front

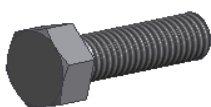
Passenger Side





Hardware Package A (For Bracket Installation)

Item	QTY	Description	Item	QTY	Description
A1	12	M8X1.25-30 Hex Bolts	A3	12	M8 Lock Washers
A2	12	M8 Large Flat Washers	A4	12	M8 Clip Nuts



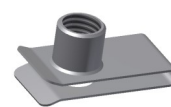
A1



A2



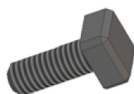
A3



A4

Hardware Package B (For Step Bar Installation)

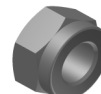
Item	QTY	Description	Item	QTY	Description
B1	12	M6X1-20mm Square Head Bolts	B3	12	M6 Nylon Lock Nuts
B2	12	M6 Large Flat Washers			



B1



B2



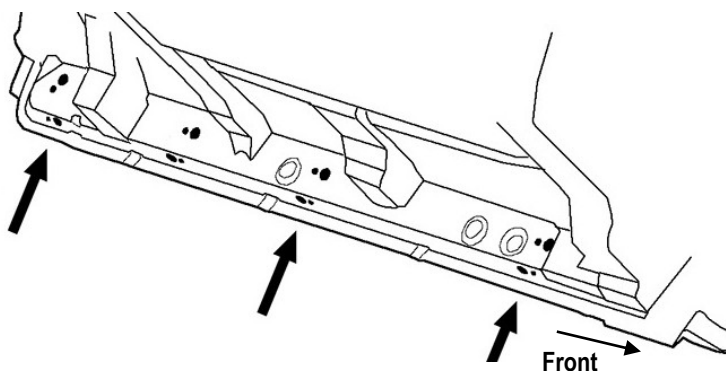
B3



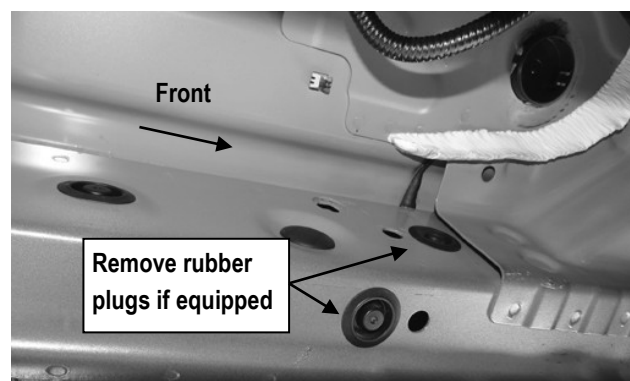
STEP 1: Locate Driver Side Mounting Locations

- Locate the mounting locations along the bottom and inner side of the body panel (**Fig 1**).
- Remove rubber plugs from each mounting location if equipped (**Fig 2**).
- Slide each Clip Nut into the large hole and over the smaller hole next to it. Line up threaded nut on the Clip Nut with smaller hole in body panel. (2) A4 (M8 Clip Nuts) for each Mounting Location, (**Figs 3-4**).

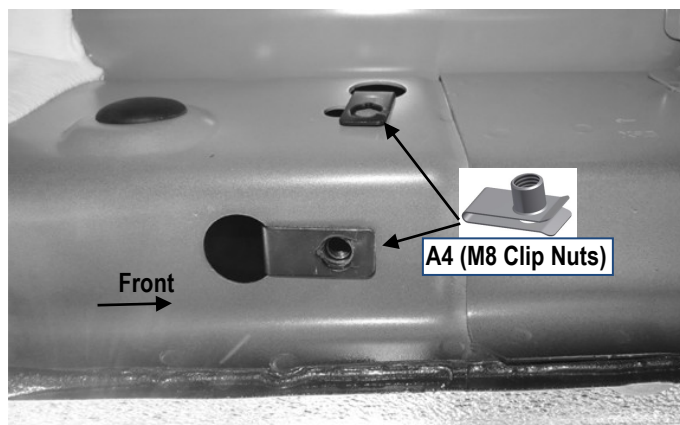
NOTE: It will be helpful for identifying the mounting holes to hold up a mounting bracket in place.



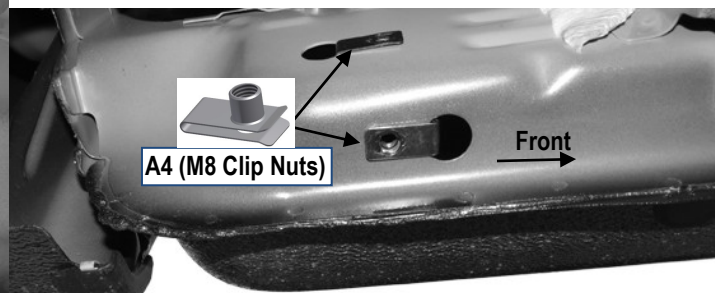
(Fig 1) Driver Side Mounting Locations



(Fig 2) Driver Side Front Mounting Location



(Fig 3) Driver Side Center Mounting Location



(Fig 4) Driver Side Rear Mounting Position



STEP 2: Install Driver Side Mounting Brackets

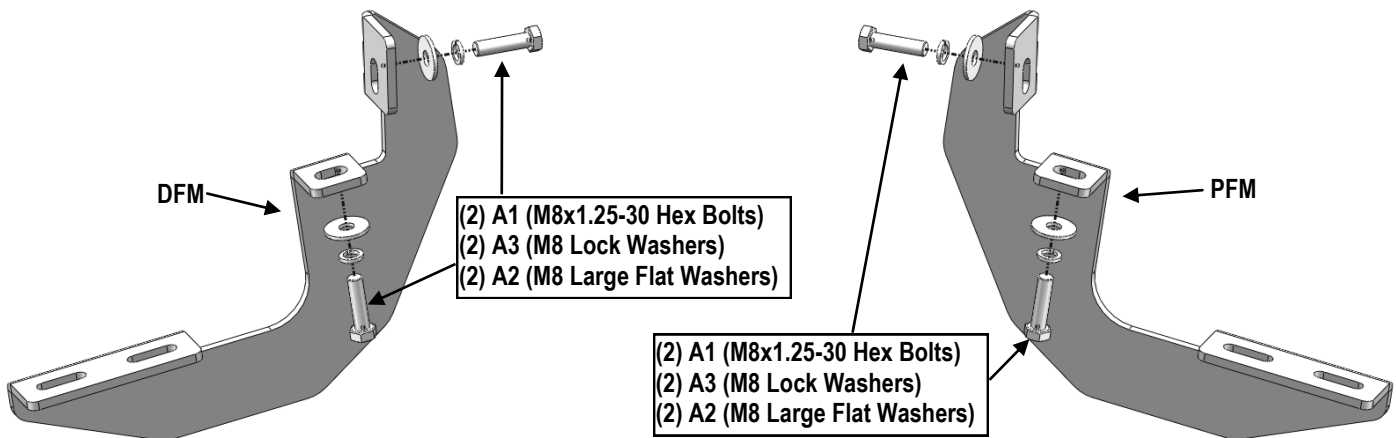
(1) Attach (1) Mounting Bracket (**DFM**) to the Driver Front Mounting Position (**Figs 2&5**) with:

- (2) A1 (M8X1.25-30 Hex Bolts)
- (2) A2 (M8 Large Flat Washers)
- (2) A3 (M8 Lock Washers)

(2) Repeat to install (1)r Mounting Bracket (**DCM**) to Driver Center Mounting Position, (**Figs 3&5**).

(3) Repeat to install (1) Mounting Bracket (**PFM**) to Driver Rear Mounting Position, (**Figs 4&6**).

Note: All (3) DFM's are Universal; All (3) PFM's are Universal.



(Fig 5) Driver Front/Center Mounting Bracket (DFM) Installation

(Fig 6) Driver Rear Mounting Bracket (PFM) Installation



STEP 3: Driver Side Running Board Installation

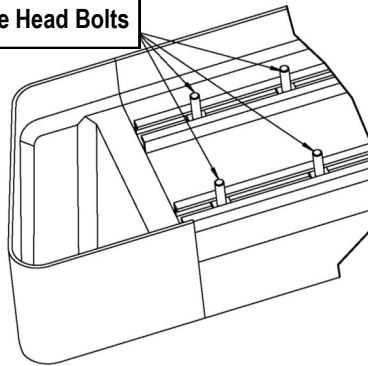
Once all (3) Driver side mounting brackets are installed, then proceed to the Running Board installation (**Figs 7-8**).

- Select a Running Board. Slip (3) B1 (M6X1-20mm Square Head Bolts) into each bottom channel (**Fig 7**).
- Carefully position the Running Board onto the (3) Mounting Brackets.
- Attach the Running Board to each Mounting Bracket with (**Fig 8**):
 - (2) B1 (M6X1-20mm Square Head Bolts)
 - (2) B2 (M6 Large Flat Washers)
 - (2) B3 (M6 Nylon Lock Nuts)

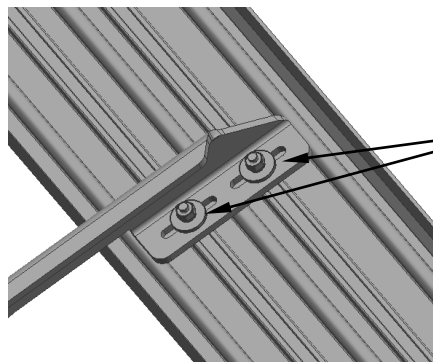
Note: Do not fully tighten hardware at this time.

IMPORTANT: Do not slide the Running Board on the Brackets or the bottom surface of the board will be damaged.

M6X1-20mm Square Head Bolts



(Fig 6) Slip M6X1-20mm Square Head Bolts Into The Bottom Channels



(2) B1 (M6X1-20mm Square Head Bolts)
(2) B2 (M6 Large Flat Washers)
(2) B3 (M6 Nylon Lock Nuts)

(Fig 7) Running Board Installed Onto Mounting Bracket



STEP 4: Driver Side Running Board Adjustment

- Level and adjust the Running Board properly.
- Tighten all 6mm hardware with 6-7 ft-lbs torque.
- Tighten all 8mm hardware with 16-18 ft-lbs torque.

Important: Please follow the recommended Tightening Torques shown in the table on page 1.

Don't over tighten, or the nuts/bolts will be damaged.

STEP 5: The Other Side Running Board Installation

Move to the other side of the vehicle. Repeat **Steps 1-4** for the other Running Board installation.

Attention

- Do periodic inspections to the installation to make sure that all hardware is secure and tight.
- In order to protect your bars/boards, please use mild soap/non-abrasive products for cleaning only.