



iBoard® Series

INSTALLATION INSTRUCTIONS

PART#: IB-R171

BEFORE INSTALLATION

REMOVE CONTENTS FROM BOX. VERIFY ALL PARTS ARE PRESENT. READ INSTRUCTIONS CAREFULLY BEFORE STARTING INSTALLATION. ASSISTANCE IS RECOMMENDED. THANK YOU FOR CHOOSING OUR PRODUCT!

These instructions are provided for reference only. We strongly recommend installation by a professional installer for the best results. We are not responsible for any damage caused during installation.

***ROCKER PANEL MOUNT**

***NO DRILLING REQUIRED**

Torque Value

Fastener Size	Tightening Torque (ft-lbs)	Required
6mm	6-7	√
8mm	16-18	√
10mm	31-32	X
12mm	56-58	X
14mm	92-94	X

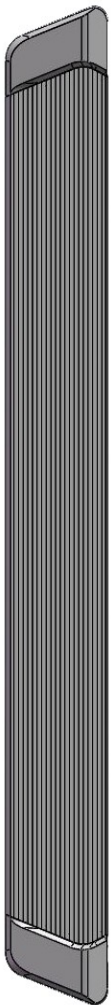


Scan for
Installation Video

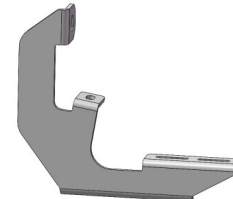
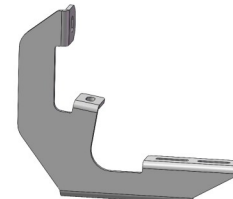
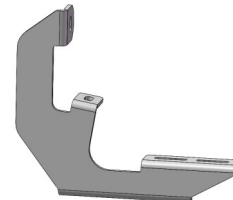
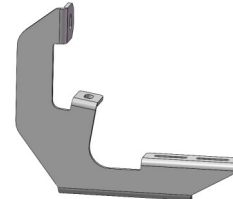
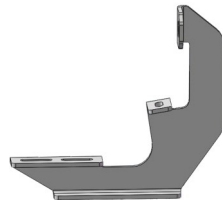
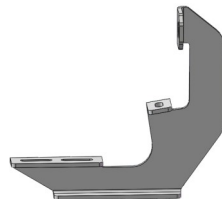
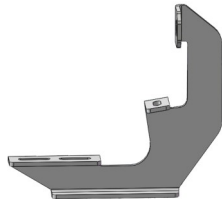
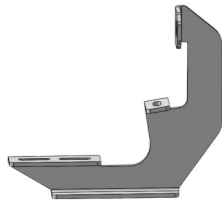
Mounting Bracket List			
Item	QTY	Part Name	Description
1#	8	Mounting Bracket	Mounting Brackets For Driver/Passenger Side (All Brackets are Universal)

PART LIST

Front






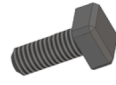


Driver Side Step Bar



Passenger Side Step Bar



Hardware Package A (For Bracket Installation)					
Item	QTY	Description	Item	QTY	Description
A1	16	M8X1.25-30 Hex Bolts	A3	16	M8 Lock Washers
A2	16	M8 Large Flat Washers			
<div style="display: flex; justify-content: space-around; align-items: center;"> <div style="text-align: center;">  2# </div> <div style="text-align: center;">  3# </div> <div style="text-align: center;">  4# </div> </div>					

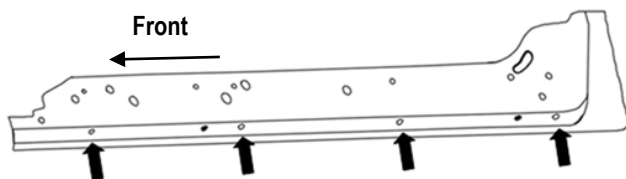
Hardware Package B (For Step Bar Installation)					
Item	QTY	Description	Item	QTY	Description
B1	16	M6X1-20mm Square Head Bolts	B3	16	M6 Nylon Lock Nuts
B2	16	M6 Large Flat Washers			
<div style="display: flex; justify-content: space-around; align-items: center;"> <div style="text-align: center;">  B1 </div> <div style="text-align: center;">  B2 </div> <div style="text-align: center;">  B3 </div> </div>					



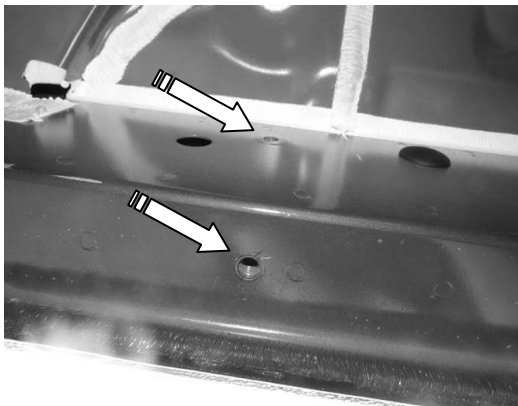
STEP 1: Locate Passenger Side Mounting Positions

- (1) Locate the 6 plugs along the bottom edge of the body panel (Pinch Weld). Mounting Brackets will bolt to the 1st, 3rd, 4th and 6th threaded mounting holes. **(Fig 1).**
- (2) Directly above each threaded insert is a top mounting location on the side of the body panel. **(Figs 2-5).**
- (3) Hold a Bracket up in place to help determine the mounting holes to use along the body.
- (4) Remove the plastic plugs from each mounting location if equipped.

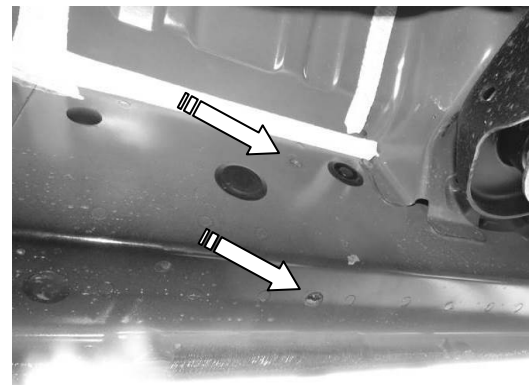
Note: Thread an 8mm Hex Bolt into the threaded inserts to clear paint as required.



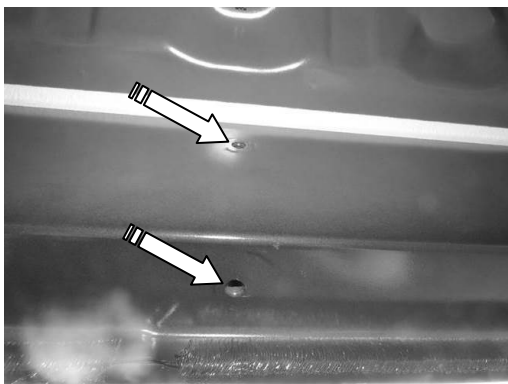
(Fig 1) Passenger Side Mounting Positions



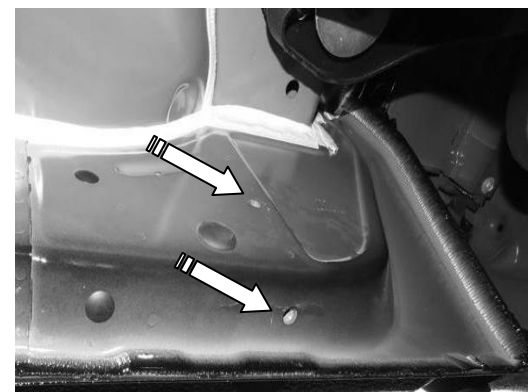
(Fig 2) Passenger Side Front Mounting Position



(Fig 3) Passenger Side 2nd Mounting Position



(Fig 4) Passenger Side 3rd Mounting Position



(Fig 5) Passenger Side Rear Mounting Position

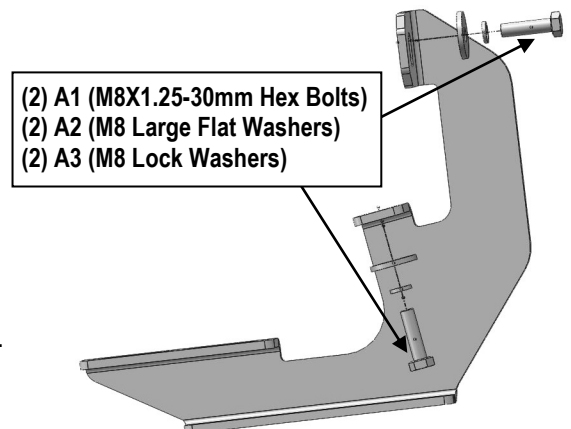


STEP 2: Install Passenger Side Mounting Brackets

- (1) Attach the Passenger Front Mounting Bracket to the Passenger Side Front Mounting Position (**Fig 2 & 6**) with:
 - (2) A1 (M8X1.25-30mm Hex Bolts)
 - (2) A2 (M8 Large Flat Washers)
 - (2) A3 (M8 Lock Washers)
- (2) Repeat to Install the Passenger 2nd Mounting Bracket (**See Fig 3 & 6**).
- (3) Repeat to install the Passenger 3rd Mounting Bracket (**See Fig 4 & 6**).
- (4) Repeat to install the Passenger Rear Mounting Bracket (**See Fig 5 & 6**).

NOTE: All (8) Mounting Brackets are universal.

Do not fully tighten hardware at this time.

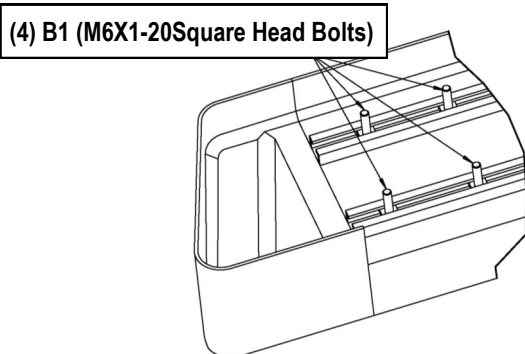


(Fig 6) Typical Passenger Front Mounting Bracket Installation

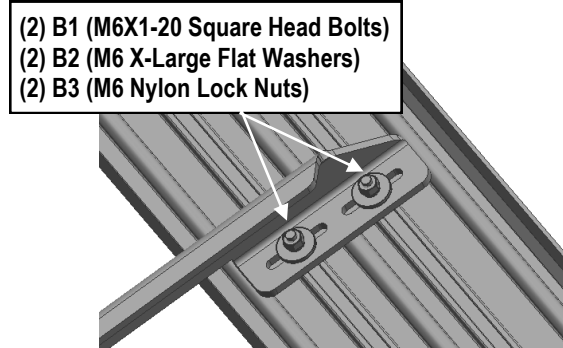
STEP 3: Passenger Side Running Board Installation

- (1) Slide (4) B1 (M6X1-20mm Square Head Bolts) into each bottom channel (**Fig 7**).
- (2) Carefully position the Running Board onto the (4) Mounting Brackets.
- (3) Attach the Running Board to each Mounting Brackets (Fig 8) with:
 - (2) B1 (M6X1-20mm Square Head Bolts)
 - (2) B2 (M6 X-Large Flat Washers)
 - (2) B3 (M6 Nylon Lock Nuts)

Note: Do not slide the Running Board on the Brackets or the bottom surface of the board will be damaged.



(Fig 7) Slide M6X1-20mm Square Head Bolts Into The Bottom Channels



(Fig 8) Running Board Installed Onto Mounting Bracket (Example)



STEP 4: Passenger Side Step Bar Adjustment

- Level and adjust the Step Bar properly.
- Tighten all 6mm hardware with 6-7 ft-lbs torque; all 8mm hardware with 16-18 ft-lbs torque.

STEP 5: The Other Side Step Bar Installation

Repeat Steps 1-4 for the Other Side Step Bar Installation.
And then installation is completed!!!

Attention

Do periodic inspections to the installation to make sure that all hardware is secure and tight.
In order to protect your bars/boards, please use mild soap/non-abrasive products for cleaning only.