

IARMOR EDGE™

PART#: IA-N298H

BEFORE INSTALLATION

REMOVE CONTENTS FROM BOX. VERIFY ALL PARTS ARE PRESENT. READ INSTRUCTIONS CAREFULLY BEFORE STARTING INSTALLATION. ASSISTANCE IS RECOMMENDED. THANK YOU FOR CHOOSING OUR PRODUCT!

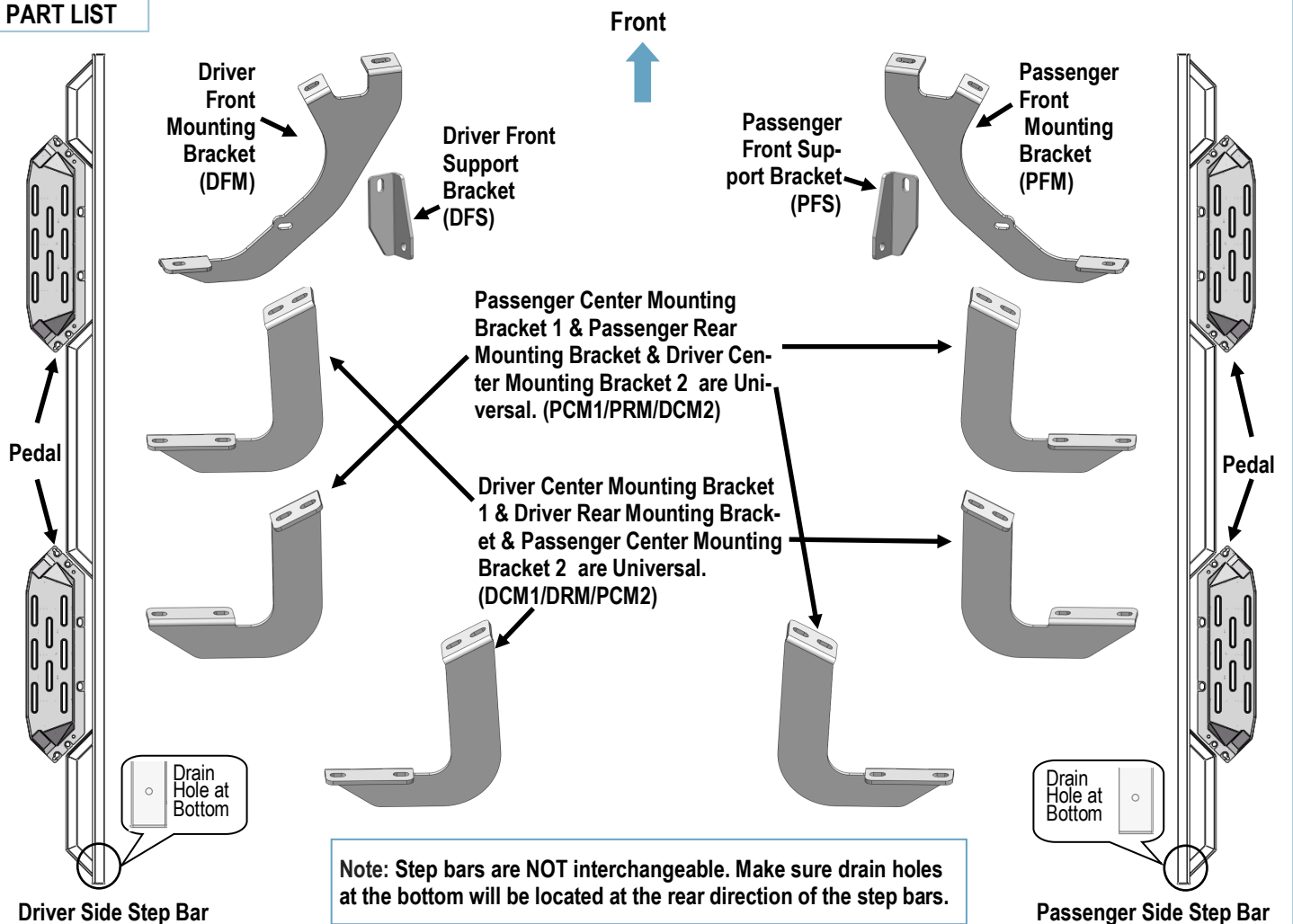
*ROCKER PANEL MOUNT

*DRILLING NOT REQUIRED

Torque Value

Fastener Size	Tightening Torque (ft-lbs)	Required
6mm	6-7	√
8mm	16-18	√
10mm	31-32	X
12mm	56-58	X
14mm	92-94	X

PART LIST



iArmor®

Hardware Package A (For Brackets & Bars Installation)					
Item	QTY	Description	Item	QTY	Description
1#	16	M8X1.25-30mm Hex Bolts	6#	2	M6X1-20 Square Head Bolts
2#	2	M8X1.25-25mm Hex Bolts	7#	2	M6 Large Flat Washers
3#	34	M8 Large Flat Washers	8#	2	M6X1 Nylon Lock Nuts
4#	16	M8 Lock Washers	9#	14	M8X1.25-20 T Bolts
5#	16	M8 Nylon Lock Nuts	10#	14	M8 Plastic Washers

Hardware Package B (For Step Pedals Installation)					
Item	QTY	Description	Item	QTY	Description
1#	24	M8X1.25-25 Hex Bolts	3#	24	M8 Lock Washers
2#	24	M8 Large Flat Washers			

Customer Support: info@iarmorauto.com

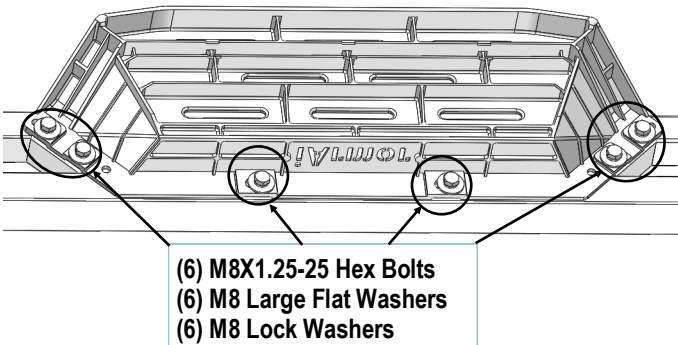
iArmor®

The instruction here is for your reference only. We strongly recommend the professional installer for best result. We are not responsible for any damage caused by the installation.

STEP 1

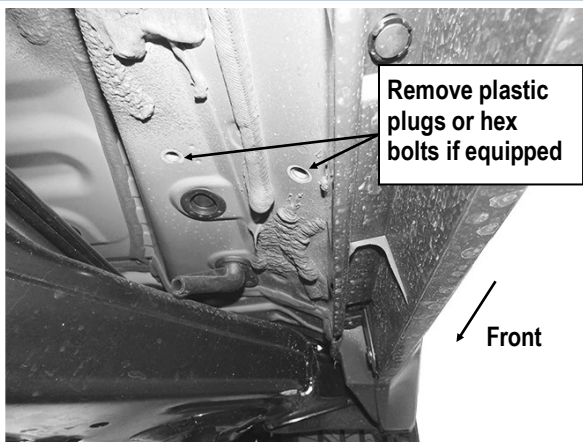
Install (4) Pedals onto the step bars with (24) M8X1.25-25mm Hex Bolts, (24) M8 Large Flat Washers and (24) M8 Lock Washers.

IMPORTANT: Don't punch the pedal with any metal hammer within pedal installation, or the pedal will be damaged.



STEP 2

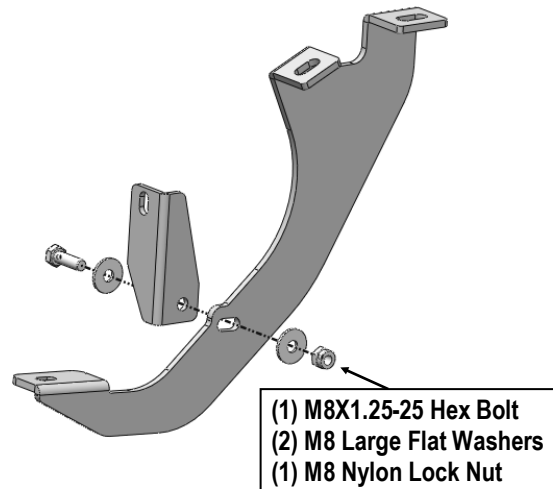
Start from the passenger side front of the vehicle. Remove the plastic plugs or hex bolts if equipped, (Fig 1).



(Fig 1) Passenger Side Front Mounting Location

STEP 3

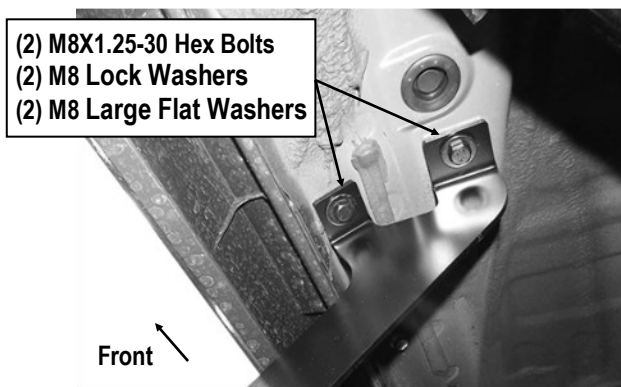
Assemble Passenger Side Front Mounting Bracket (PFM) and Passenger Front Support Bracket (PFS) with (1) M8X1.25-25 Hex Bolt, (2) M8 Large Flat Washers, (1) M8X1.25 Nylon Lock Nut, (Fig 2). Do not fully tighten hardware at this time.



(Fig 2) Passenger Front Brackets Assembly

STEP 4

Attach the Assembled Passenger Front Brackets to the mounting location with (2) M8X1.25-30 Hex Bolts, (2) M8 Lock Washers and (2) M8 Large Flat Washers, (Fig 3). Do not fully tighten at this time.

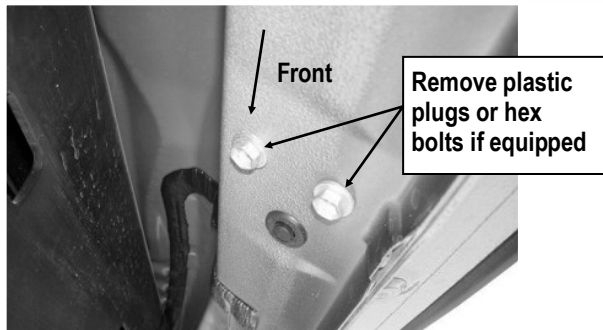


(Fig 3) Passenger Front Mounting Bracket Installed

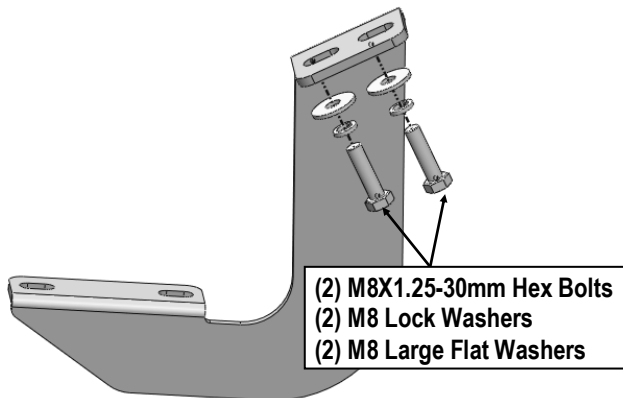
iArmor®

STEP 5

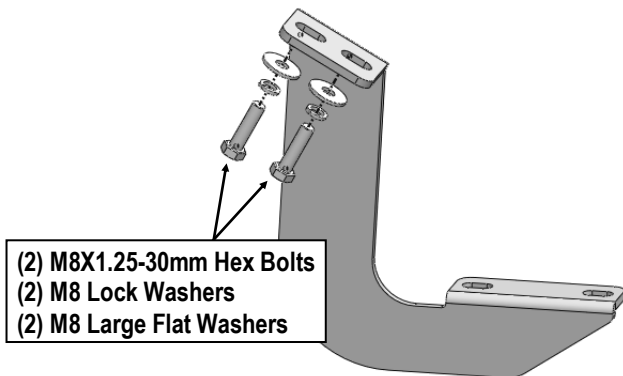
Repeat **Step 4** to install the (3) Passenger Center / Rear Mounting Brackets (**PCM1/ PCM2 /PRM**), (**Figs 4-6**). Do not fully tighten at this time.



(Fig 4) Passenger Side Center/ Rear Mounting Location



(Fig 5) Passenger Center Mounting Bracket 1 & Passenger Rear Bracket Installation

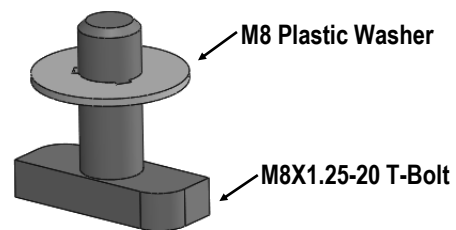


(Fig 6) Passenger Center Mounting Bracket 2 Installation

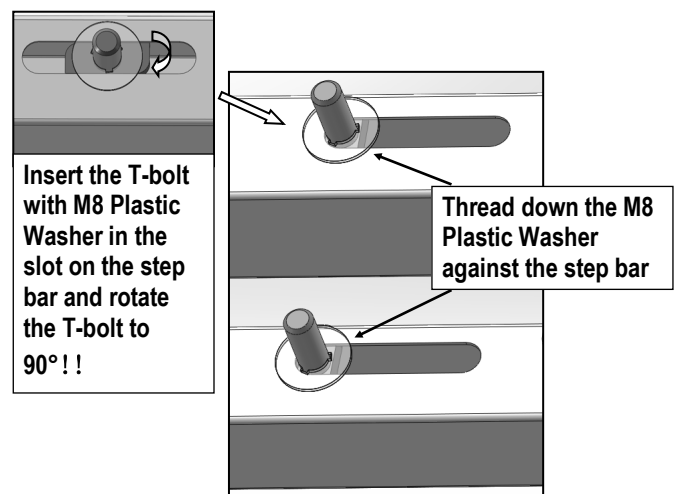
STEP 6

Once all (4) brackets have been installed, select (7) M8X1.25-20mm T-Bolts, thread (1) M8 Plastic Washer on each T-Bolt, (**Fig 7**). Install the (7) M8X1.25-20mm T-Bolts with plastic washers in the slots on the assembled Passenger side step bar. Rotate the T-Bolts to 90 degree, thread down the M8 Plastic Washers against the step bar (**Fig 8**).

NOTE: The Plastic Washer is designed to keep the T-Bolt in place to avoid falling into the tube during installation.



(Fig 7) Thread (1) M8 Plastic Washer on each T-Bolt Before Inserting into the slot !!!



(Fig 8) T-Bolt with plastic washer in the slot

iArmor®

STEP 7

Attach the Assembled Passenger Side Step Bar onto the Mounting Brackets with (7) M8 Plastic Washers, (7) M8X1.25-20mm T-Bolts, (7) M8 Large Flat Washers, (7) M8 Nylon Lock Nuts, (Fig 9). Do not fully tighten hardware at this time.

NOTE: Passenger Front Mounting Bracket is located under front pedal. Slide (1) M6X1-20mm Square Head Bolt into the channel at the bottom of front pedal (Fig 10). And secure the Passenger Front Mounting Bracket to pedal with (1) M6 Large Flat Washer and (1) M6 Nylon Lock Nut1, (Fig 9). Do not fully tighten hardware at this time.

STEP 8

Level and adjust the assembled Step Bar properly and tighten all hardware.

Move to the other side of the vehicle. Repeat **Steps 2-7** for the other Side Step Bar installation.

Attention

Do periodic inspections to the installation to make sure that all hardware is secure and tight.

In order to protect your bars/boards, please use mild soap/non-abrasive products for cleaning only.

