

**PART#: IA-N158H**

# iArmor® Series

**BEFORE INSTALLATION**

REMOVE CONTENTS FROM BOX. VERIFY ALL PARTS ARE PRESENT. READ INSTRUCTIONS CAREFULLY BEFORE STARTING INSTALLATION. ASSISTANCE IS RECOMMENDED. THANK YOU FOR CHOOSING OUR PRODUCT!

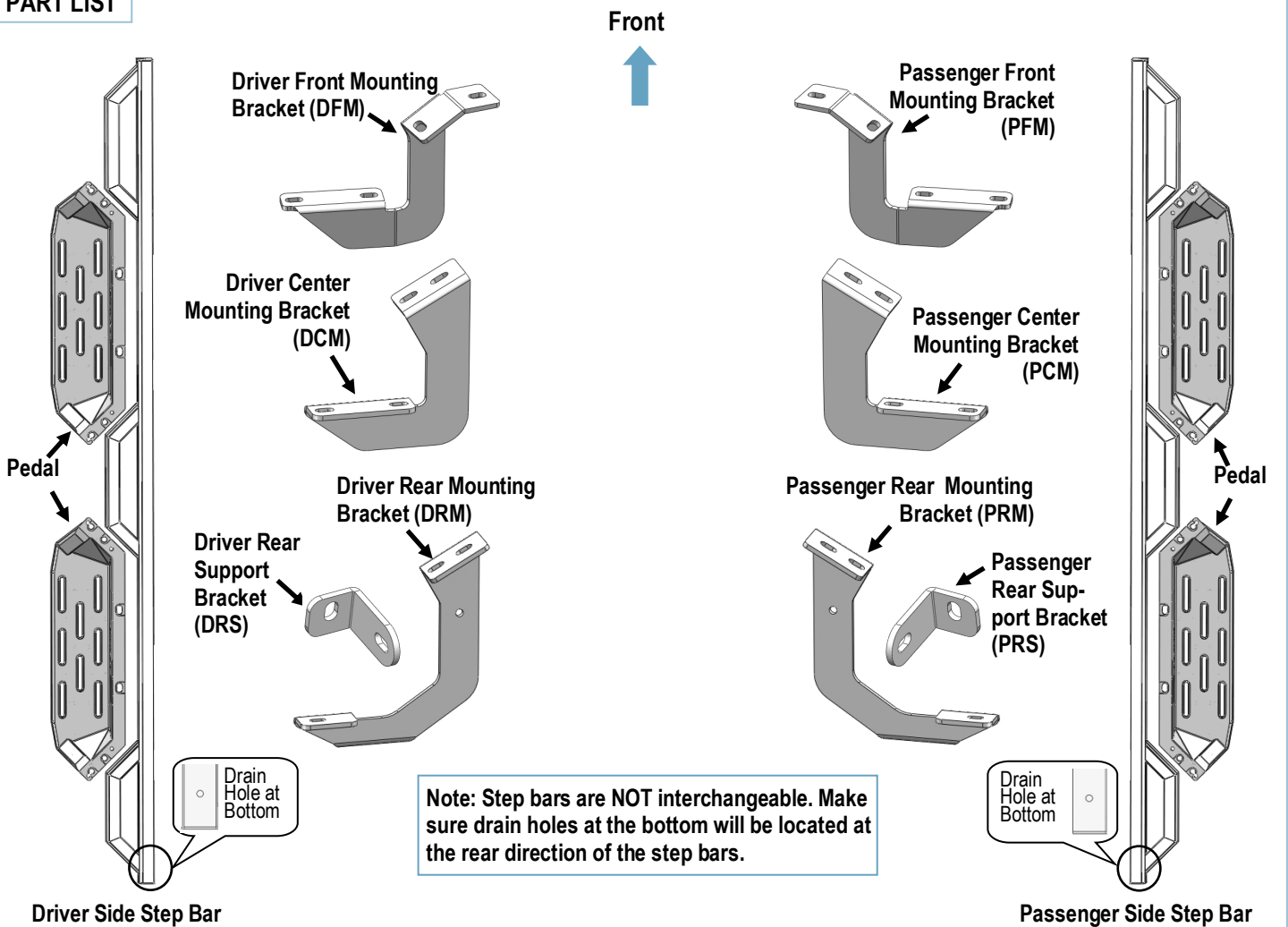
**\*ROCKER PANEL MOUNT**

**\*DRILLING IS REQUIRED**

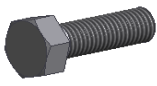
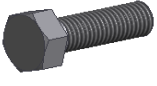



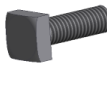




**Torque Value**

Fastener Size	Tightening Torque (ft-lbs)	Required
6mm	6-7	√
8mm	16-18	√
10mm	31-32	X
12mm	56-58	X
14mm	92-94	X

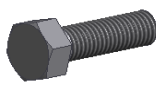


**PART LIST**



Hardware Package A (For Brackets & Bars Installation)					
Item	QTY	Description	Item	QTY	Description
1#	12	M8X1.25-30 Hex Bolts	6#	2	M6X1-20 Square Head Bolts
2#	2	M8X1.25-25 Hex Bolts	7#	2	M6 Large Flat Washers
3#	26	M8 Large Flat Washers	8#	2	M6 Nylon Lock Nuts
4#	12	M8 Lock Washers	9#	10	M8X1-20 T-Bolts
5#	12	M8 Nylon Lock Nuts	10#	10	M8 Plastic Washers

Hardware Package B (For Step Pedals Installation)					
Item	QTY	Description	Item	QTY	Description
1#	24	M8X1.25-25 Hex Bolts	3#	24	M8 Lock Washers
2#	24	M8 Large Flat Washers			

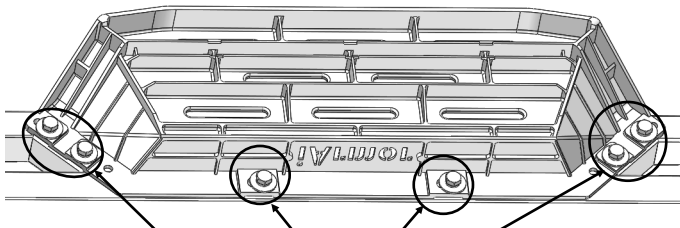




The instruction here is for your reference only. We strongly recommend the professional installer for best result. We are not responsible for any damage caused by the installation.

## STEP 1

Install (4) Pedals onto the step bars with (24) M8X1.25-25mm Hex Bolts, (24) M8 Large Flat Washers and (24) M8 Lock Washers.

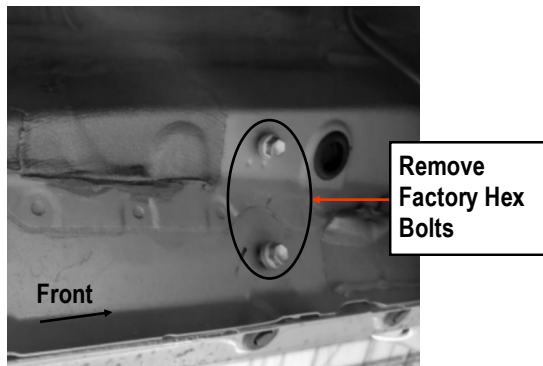
**IMPORTANT:** Don't punch the pedal with any metal hammer within pedal installation, or the pedal will be damaged.



(6) M8X1.25-25 Hex Bolts  
(6) M8 Large Flat Washers  
(6) M8 Lock Washers

## STEP 2

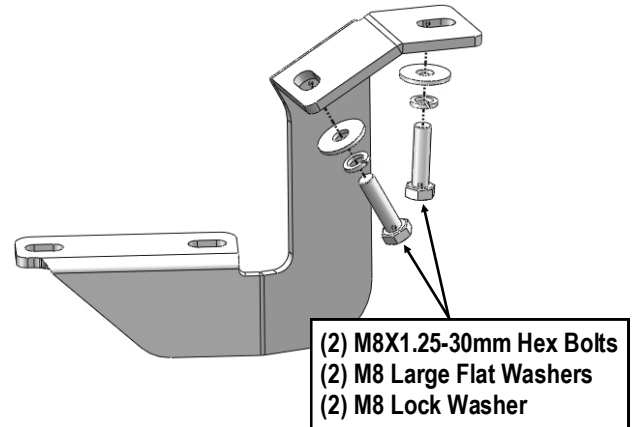
Start from the driver side front of the vehicle, remove the existing (2) factory bolts, (Fig 1). This will be the mounting location for the Driver Front Mounting Bracket.



(Fig 1) Driver Side Front Mounting Location

## STEP 3

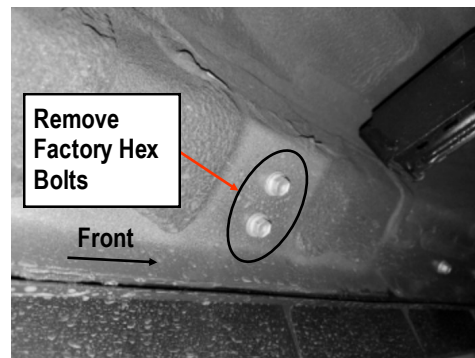
Select the Driver Front Mounting Bracket, attach the Bracket to the vehicle using (2) M8X1.25-30mm Hex Bolts, (2) M8 Lock Washers and (2) M8 Large Flat Washers, (Fig 2). Do not fully tighten hardware at this time.



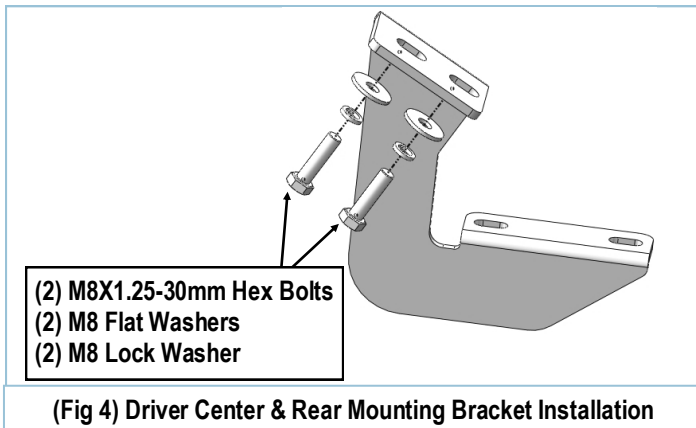
(Fig 2) Driver Front Mounting Bracket Installation

## STEP 4

Move along the side panel to the Driver Side Center Mounting Location, (Fig 3). Repeat Step 2 to install the Driver Center Mounting Bracket, (Fig 4).



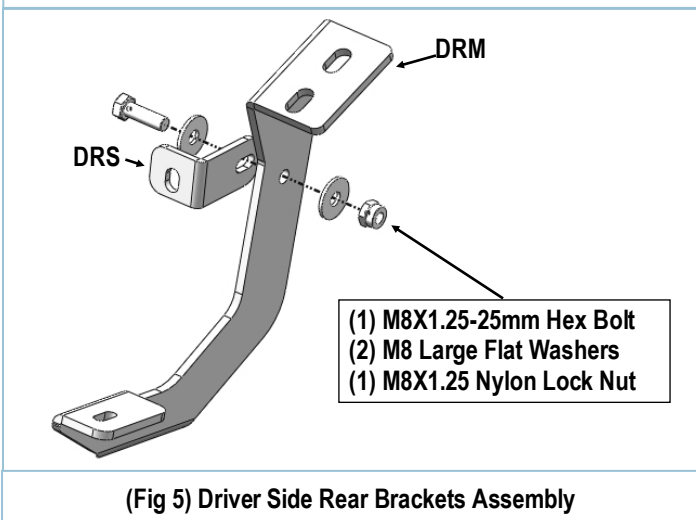
(Fig 3) Driver Side Center & Rear Mounting Location



(Fig 4) Driver Center & Rear Mounting Bracket Installation

## STEP 5

Assemble Driver Rear Mounting Bracket (DRM) and Driver Rear Support Bracket (DRS) with (1) M8X1.25-25mm Hex Bolt, (2) M8 Large Flat Washers and (1) M8 Nylon Lock Nut, (Fig 5). Repeat Step 4 to install Driver Rear Mounting Bracket (DRM).



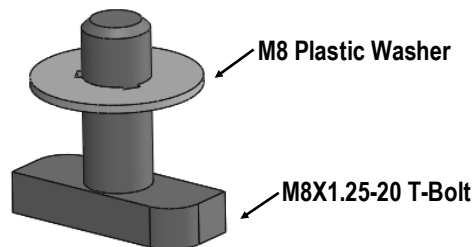
(Fig 5) Driver Side Rear Brackets Assembly

## STEP 6

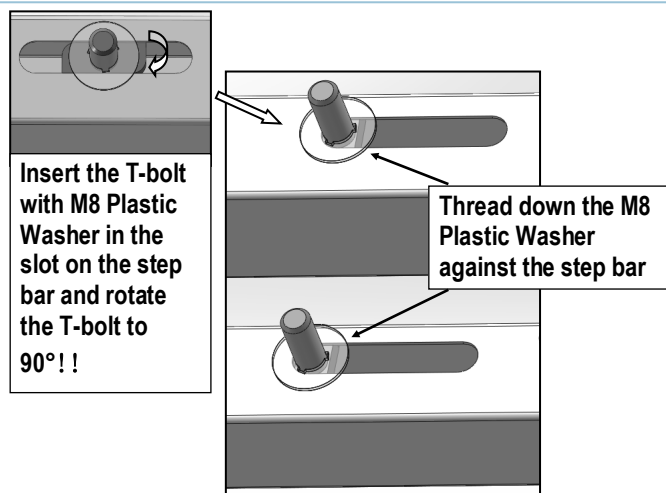
Once all (3) brackets have been installed, select (5) M8X1.25-20mm T-Bolts, thread (1) M8 Plastic Washer on each T-Bolt, (Fig 6). Install the (5) M8X1.25-20mm T-Bolts with plastic washers in the slots on the assembled Driver side step bar.

Rotate the T-Bolts to 90 degree, thread down the M8 Plastic Washers against the step bar (Fig 7).

**NOTE:** The Plastic Washer is designed to keep the T-Bolt in place to avoid falling into the tube during installation.



(Fig 6) Thread (1) M8 Plastic Washer on each T-Bolt Before Inserting into the slot !!!



(Fig 7) T-Bolt with plastic washer in the slot

## STEP 7

Attach the Assembled Driver Side Step Bar onto the Mounting Brackets with (5) M8 Plastic Washers, (5) M8X1.25-20mm T-Bolts, (5) M8 Large Flat Washers, (5) M8 Nylon Lock Nuts, (Fig 8). Do not fully tighten hardware at this time.

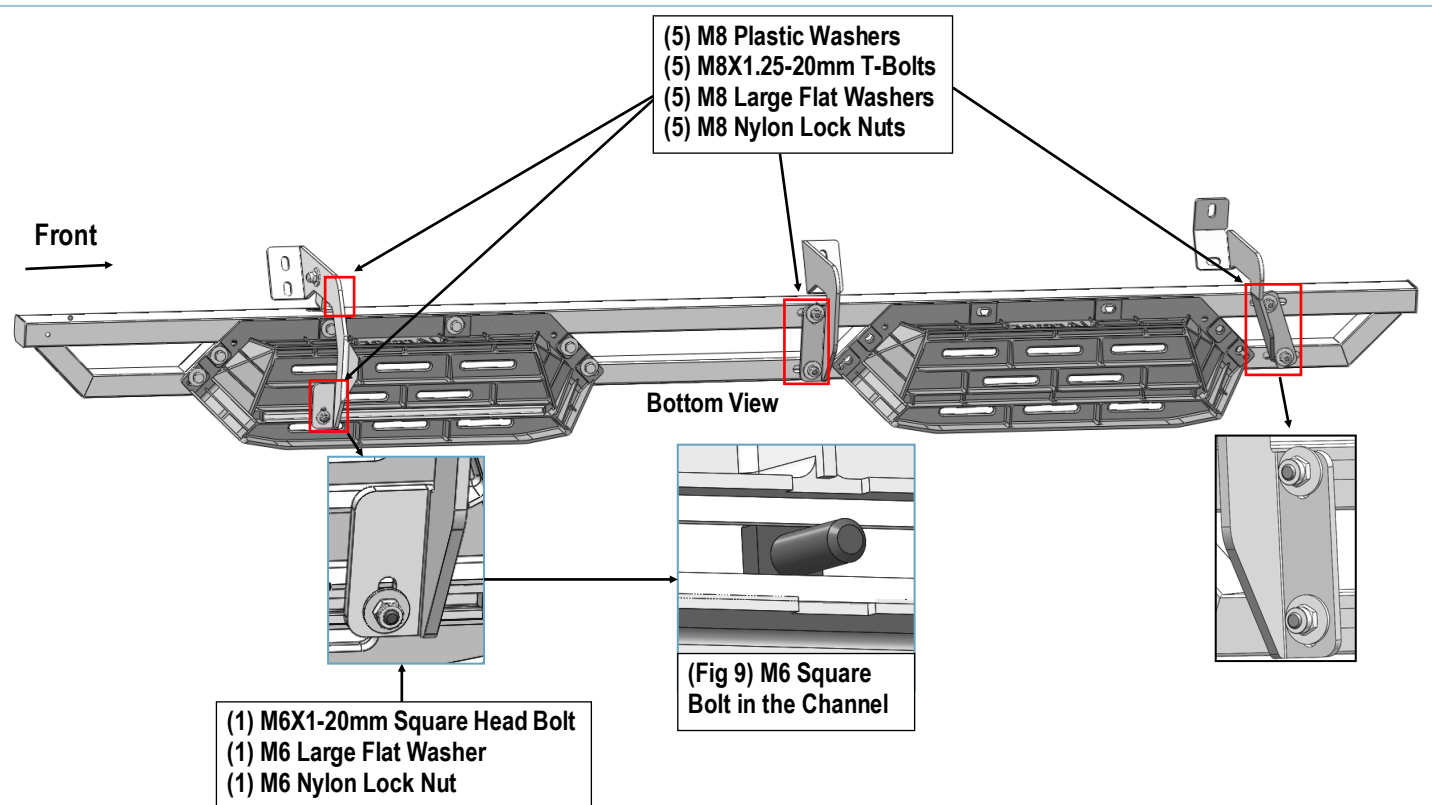
**NOTE:** the Driver Rear Mounting Bracket is located under the rear pedal. Slide (1) M6X1-20mm Square Head Bolt into the channel at the bottom of the rear pedal (Fig 9). And secure the

Driver Rear Mounting Bracket to the pedal with (1) M6 Large Flat Washer and (1) M6 Nylon Lock Nut, **(Fig 9)**. Do not fully tighten hardware at this time.

## STEP 8

Level and adjust the assembled Step Bar properly and tighten all hardware.

Move to the other side of the vehicle. Repeat **Steps 2-8** for the other Side Step Bar installation.



(Fig 8) Driver Side Step Bar Installation

### Attention

Do periodic inspections to the installation to make sure that all hardware is secure and tight.  
 In order to protect your bars/boards, please use mild soap/non-abrasive products for cleaning only.