

iArmor[®]

iArmor[®] by APS

PART#: IA-S003&S011

BEFORE INSTALLATION

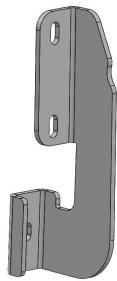
REMOVE CONTENTS FROM BOX. VERIFY ALL PARTS ARE PRESENT. READ INSTRUCTIONS CAREFULLY BEFORE STARTING INSTALLATION. ASSISTANCE IS RECOMMENDED. THANK YOU FOR CHOOSING OUR PRODUCT!

Fastener Size	Tightening Torque (ft-lbs)
6mm	6-7
8mm	16-18
10mm	31-32
12mm	56-58
14mm	92-94

PART LIST

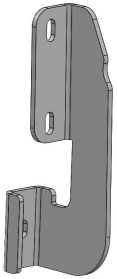


Driver Side Step Bar



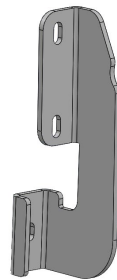
X1

Driver Front Mounting Bracket (DFM/DCM/DRM)



X1

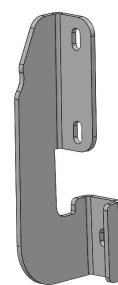
Driver Center Mounting Bracket (DFM/DCM/DRM)



X1

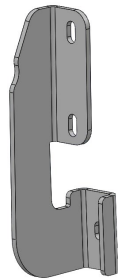
Driver Rear Mounting Bracket (DFM/DCM/DRM)

Front
↑



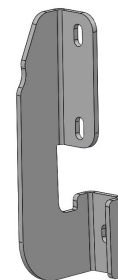
X1

Passenger Front Mounting Bracket (PFM/PCM/PRM)



X1

Passenger Center Mounting Bracket (PFM/PCM/PRM)



X1

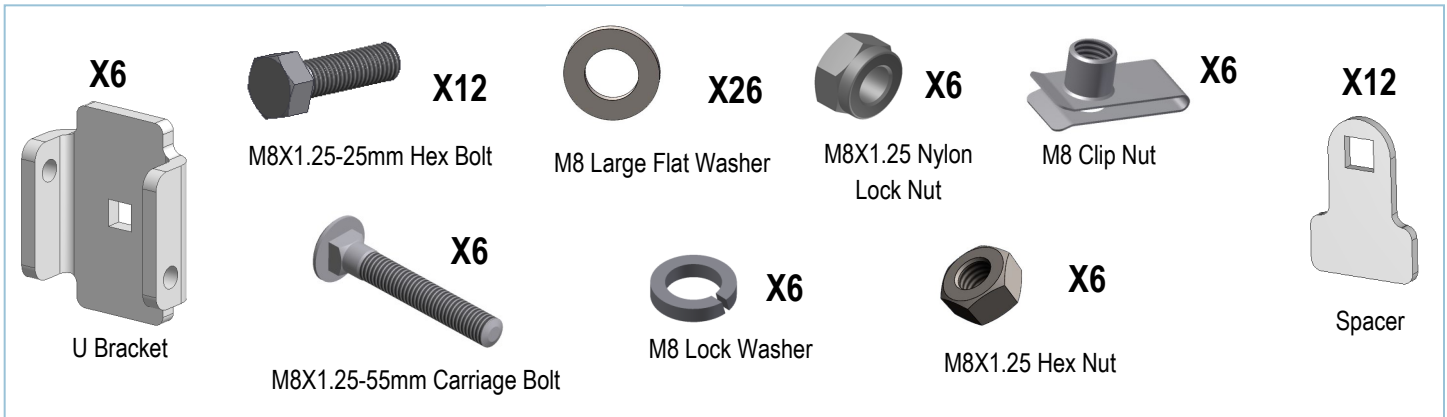
Passenger Rear Mounting Bracket (PFM/PCM/PRM)



Passenger Side Step Bar

Customer Support: info@iarmorauto.com

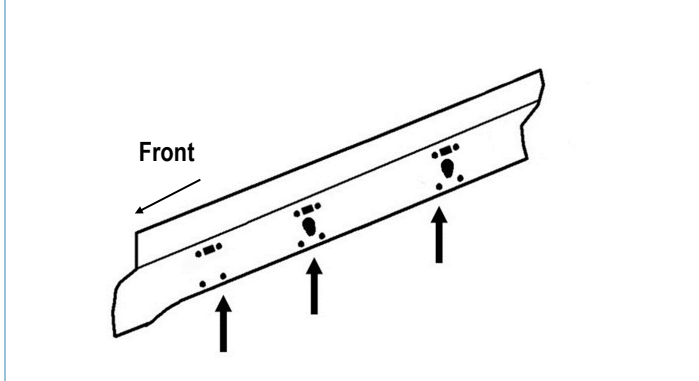
iArmor®



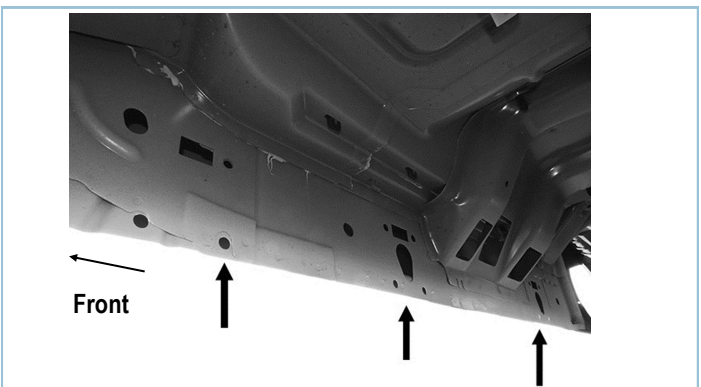
The instruction here is for your reference only. We strongly recommend the professional installer for best result. We are not responsible for any damage caused by the installation.

STEP 1

Starting on the passenger side of the vehicle, locate the (2) holes through the bottom of the body panel, (pinch weld). Next locate the rectangular opening and (2) small holes in the inner body panel directly above the holes in the pinch weld, **(Figs 1 & 2)**. **NOTE:** The holes in the inner panel may be covered with sealing tape or insulation, remove as required.



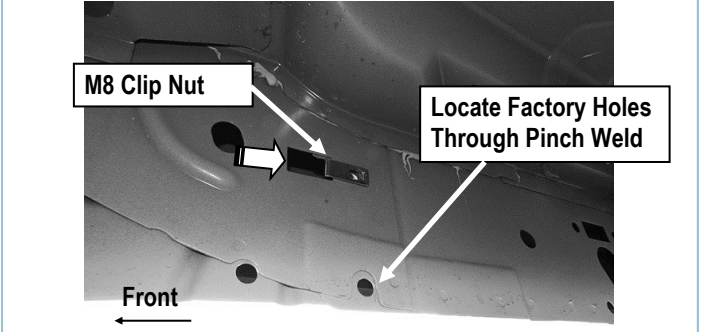
(Fig 1) Passenger Side Mounting Area Illustrated For Instruction Purposes



(Fig 2) Passenger Side Mounting Location Pictured

STEP 2

Slide (1) M8 Clip Nut into the rectangular opening with the nut towards the inside. Line up the threaded nut on the clip with the round hole toward the rear, **(Fig 3)**.



(Fig 3) Slide M8 Clip Nut Into Rectangular Opening

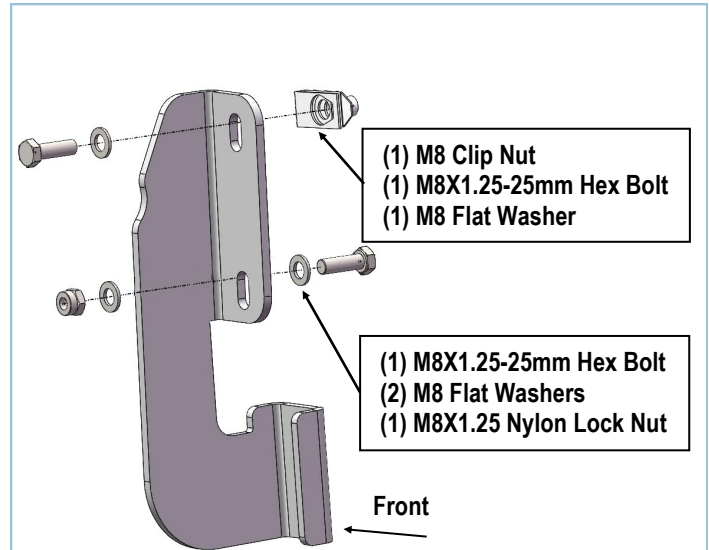
iArmor®

STEP 3

Select (1) Passenger Front Mounting Bracket (**PFM/PCM/PRM**). Attach the top of the Bracket to the M8 Clip Nut with (1) M8X1.25-25mm Hex Bolt and (1) M8 Flat Washer, (**Fig 4**). Leave loose at this time. Line up the lower hole in the Bracket with the hole through the pinch weld. Bolt the Bracket to the pinch weld with (1) M8X1.25-25mm Hex Bolt, (2) M8 Flat Washers and (1) M8X1.25 Nylon Lock Nut, (**Fig 4**). Snug but do not fully tighten Bracket hardware.

STEP 4

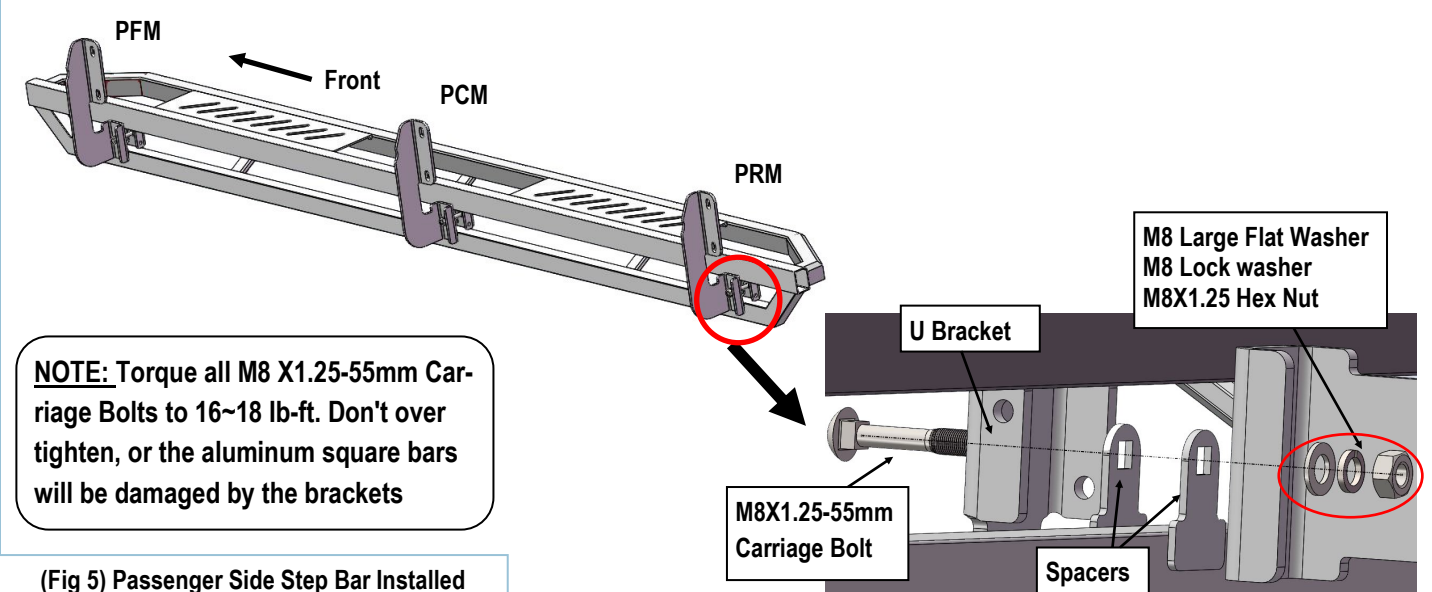
Repeat Steps 1-3 for Passenger Center & Rear Mounting Brackets (**PFM/PCM/PRM**) installation.



(Fig 4) Passenger Front Mounting Bracket (DFM /DCM/DRM) Installation Pictured

STEP 5

Once all (3) passenger side mounting brackets are installed, select and attach the Passenger Side Step Bar onto the Mounting Brackets with (3) U Brackets, (6) Spacers, (3) M8X1.25-55mm Carriage Bolts, (3) M8 Large Flat Washers, (3) M8 Lock Washers and (3) M8X1.25 Hex Nuts (**Fig 5**). Do not fully tighten hardware at this time.



NOTE: Torque all M8 X1.25-55mm Carriage Bolts to 16~18 lb-ft. Don't over tighten, or the aluminum square bars will be damaged by the brackets

(Fig 5) Passenger Side Step Bar Installed

iArmor®

STEP 6

Properly level and adjust the Step Bar and fully tighten all hardware.

STEP 7

Move to the driver side of the vehicle. Repeat **Steps 1-6** to install driver side step bar.

Installation completed (**Fig 6**).



(Fig 6) Installation Completed

Attention

Do periodic inspections to the installation to make sure that all hardware is secure and tight.

In order to protect your bars/boards, please use only mild soap/non-abrasive products for cleaning.