

iArmor®

IARMOR EDGE™

PART#: IA-N239H

BEFORE INSTALLATION

REMOVE CONTENTS FROM BOX. VERIFY ALL PARTS ARE PRESENT. READ INSTRUCTIONS CAREFULLY BEFORE STARTING INSTALLATION. ASSISTANCE IS RECOMMENDED. THANK YOU FOR CHOOSING OUR PRODUCT!

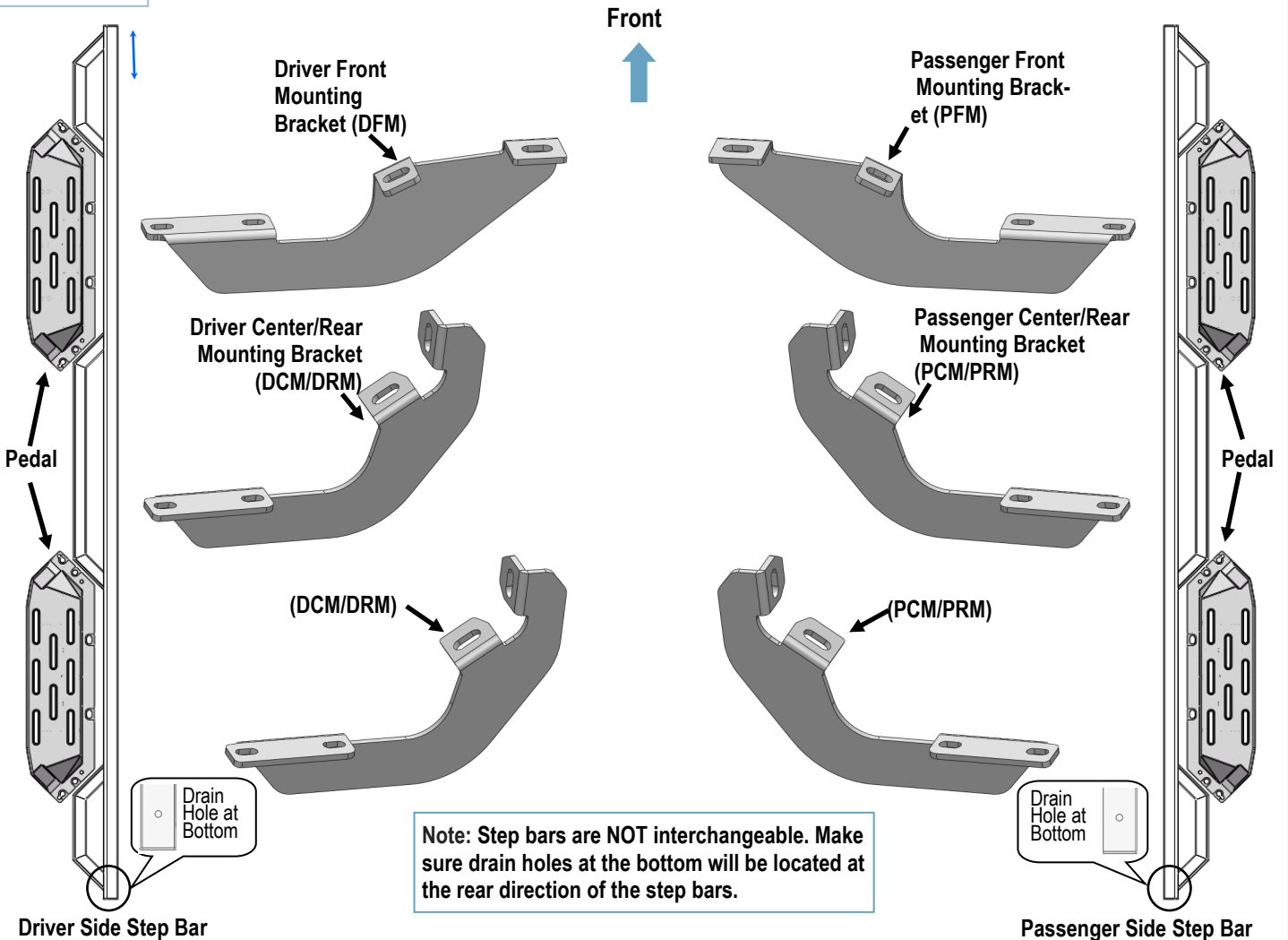
*ROCKER PANEL MOUNT

*DRILLING NOT REQUIRED

Torque Value

Fastener Size	Tightening Torque (ft-lbs)	Required
6mm	6-7	X
8mm	16-18	√
10mm	31-32	√
12mm	56-58	X
14mm	92-94	X

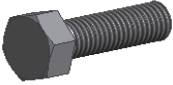






PART LIST



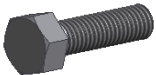


Customer Support: info@iarmorauto.com

iArmor®

Hardware Package A (For Brackets & Bars Installation)					
Item	QTY	Description	Item	QTY	Description
1#	12	M10X1.5-25mm Hex Bolts	5#	12	M8 Plastic Washers
2#	12	M10 Large Flat Washers	6#	12	M8 Large Flat Washers
3#	12	M10 Lock Washers	7#	12	M8 Nylon Lock Nuts
4#	12	M8X1.25-20 T-Bolt			

						
1 #	2 #	3 #	4 #	5 #	6 #	7 #

Hardware Package B (For Step Pedals Installation)					
Item	QTY	Description	Item	QTY	Description
1#	24	M8X1.25-25 Hex Bolts	3#	24	M8 Lock Washers
2#	24	M8 Large Flat Washers			

		
1 #	2 #	3 #

Customer Support: info@iarmorauto.com

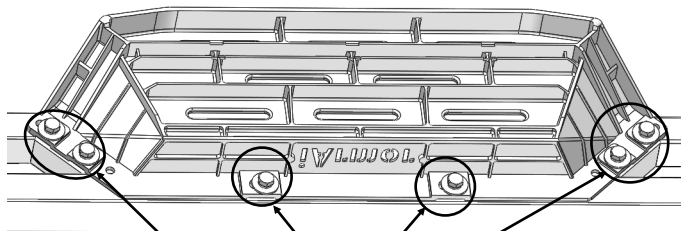
iArmor®

The instruction here is for your reference only. We strongly recommend the professional installer for best result. We are not responsible for any damage caused by the installation.

STEP 1

Install (4) Pedals onto the step bars with (24) M8X1.25-25mm Hex Bolts, (24) M8 Large Flat Washers and (24) M8 Lock Washers.

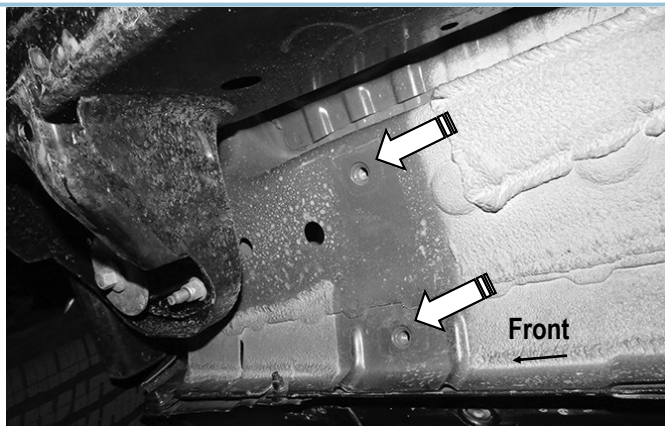
IMPORTANT: Don't punch the pedal with any metal hammer within pedal installation, or the pedal will be damaged.



(6) M8X1.25-25 Hex Bolts
(6) M8 Large Flat Washers
(6) M8 Lock Washers

STEP 2

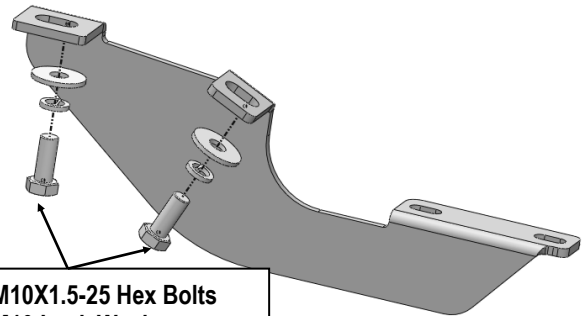
Start the installation under the passenger side of the vehicle. Locate the passenger side front mounting location on the inner side of the body panel, (Fig 1).



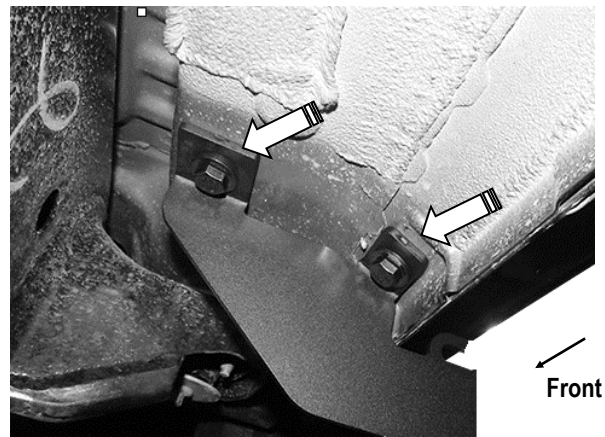
(Fig 1) Passenger Side Front Mounting Location

STEP 3

Remove the plastic plugs covering the mounting holes if equipped. Attach the Passenger Front Mounting Bracket (PFM) to passenger side front mounting location with (2) M10X1.5-25 Hex Bolts, (2) M10 Lock Washers and (2) M10 Large Flat Washers, (Fig 2 & 3). Do not fully tighten hardware at this time.



(Fig 2) Passenger Front Mounting Bracket (PFM) Installation

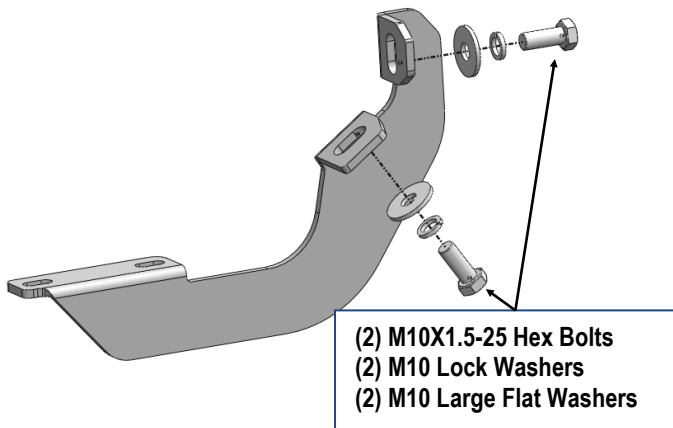


(Fig 3) Passenger Front Mounting Bracket (PFM) Installed

STEP 4

Move to the passenger side center threaded mounting holes. Select and attach (1) Passenger Center Mounting Bracket (PCM/PRM) with (2) M10X1.5-25 Hex Bolts, (2) M10 Lock Washers and (2) M10 Large Flat Washers, (Fig 4). Do not fully tighten hardware at this time.

iArmor®



(2) M10X1.5-25 Hex Bolts
(2) M10 Lock Washers
(2) M10 Large Flat Washers

(Fig 4) Passenger Center/Rear Mounting Bracket (PCM/PRM) Installation

STEP 5

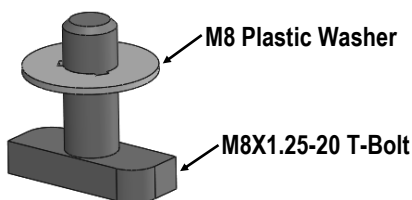
Repeat **Step 4** to install Passenger Rear Mounting Bracket (PRM). Do not fully tighten hardware at this time.

Note: Passenger Center & Rear Mounting Bracket are universal.

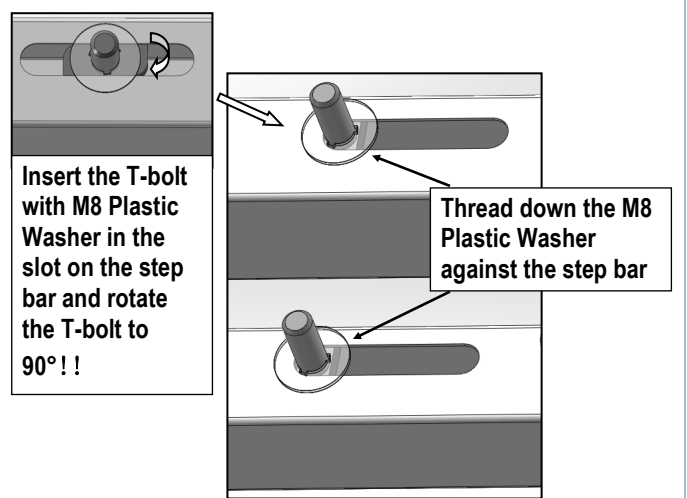
STEP 6

Once all (3) brackets have been installed, select (6) M8X1.25-20mm T-Bolts, thread (1) M8 Plastic Washer on each T-Bolt, (Fig 5). Install the (6) M8X1.25-20mm T-Bolts with plastic washers in the slots on the assembled Passenger side step bar. Rotate the T-Bolts to 90 degree, thread down the M8 Plastic Washers against the step bar (Fig 6).

NOTE: The Plastic Washer is designed to keep the T-Bolt in place to avoid falling into the tube during installation.



(Fig 5) Thread (1) M8 Plastic Washer on each T-Bolt Before inserting into the slot !!!



Insert the T-bolt with M8 Plastic Washer in the slot on the step bar and rotate the T-bolt to 90° !!

Thread down the M8 Plastic Washer against the step bar

(Fig 6) T-Bolt with plastic washer in the slot

STEP 7

Attach the Assembled Passenger Side Step Bar onto the Mounting Brackets with (6) M8 Plastic Washers, (6) M8X1.25-20mm T-Bolts, (6) M8 Large Flat Washers, (6) M8 Nylon Lock Nuts, (Fig 7). Do not fully tighten hardware at this time.

STEP 8

Level and adjust the assembled Step Bar properly and tighten all hardware.

Move to the other side of the vehicle. Repeat **Steps 2-7** for the other Side Step Bar installation.

Attention

Do periodic inspections to the installation to make sure that all hardware is secure and tight.

In order to protect your bars/boards, please use mild soap/non-abrasive products for cleaning only.

iArmor[®]

