

# iArmor®

## IARMOR EDGE™

PART#: IA-N188H

### BEFORE INSTALLATION

REMOVE CONTENTS FROM BOX. VERIFY ALL PARTS ARE PRESENT. READ INSTRUCTIONS CAREFULLY BEFORE STARTING INSTALLATION. ASSISTANCE IS RECOMMENDED. THANK YOU FOR CHOOSING OUR PRODUCT!

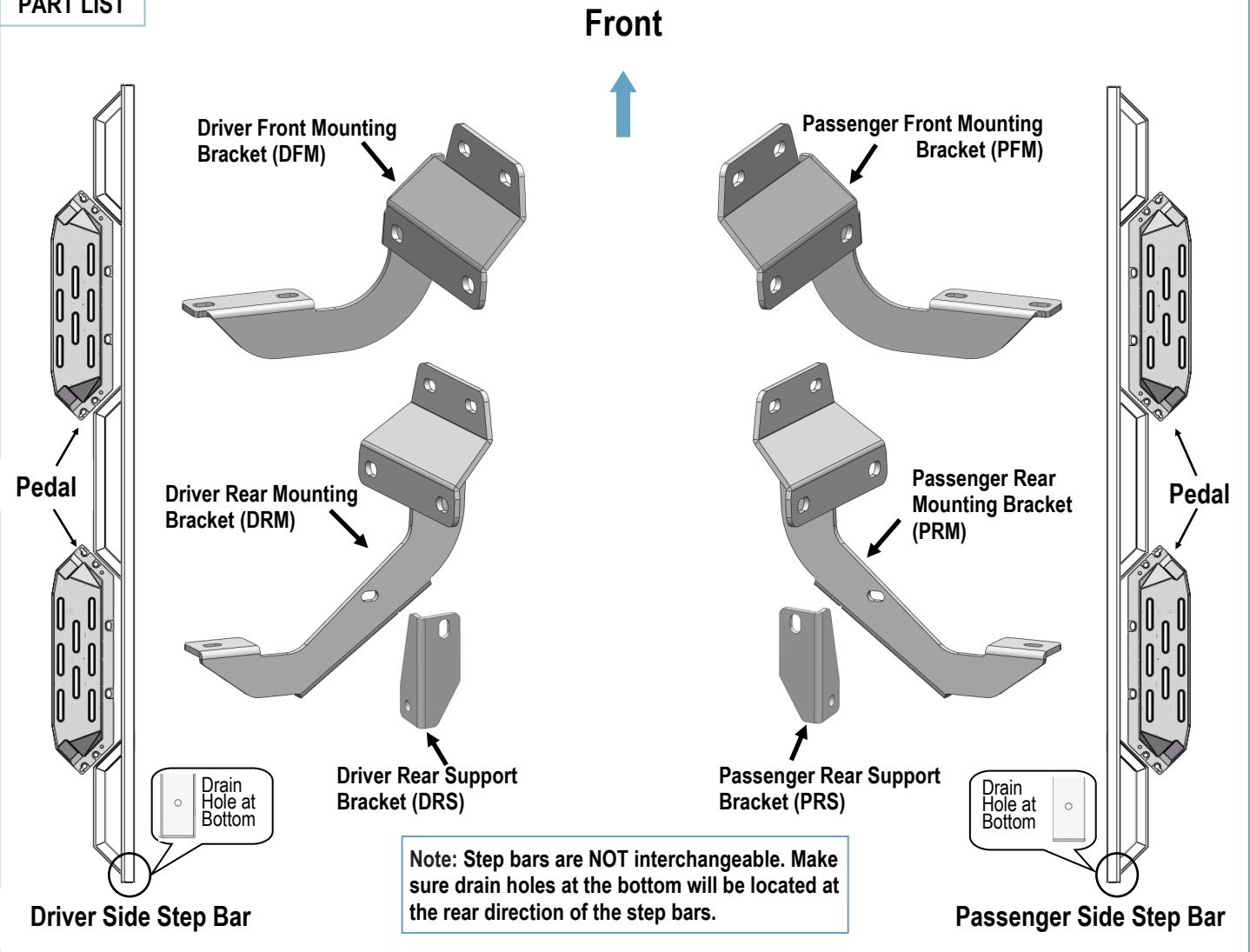
\*ROCKER PANEL MOUNT

\*DRILLING NOT REQUIRED

### Torque Value

Fastener Size	Tightening Torque (ft-lbs)	Required
6mm	6-7	√
8mm	16-18	√
10mm	31-32	X
12mm	56-58	X
14mm	92-94	X

### PART LIST


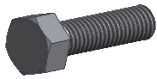


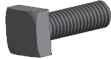






Customer Support: [info@iarmorauto.com](mailto:info@iarmorauto.com)

# iArmor®

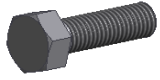


Hardware Package A (For Brackets & Bars Installation)					
Item	QTY	Description	Item	QTY	Description
1#	12	M8 Plastic Washers	6#	2	M6 Large Flat Washers
2#	2	M8X1.25-30 Hex Bolts	7#	2	M6X1 Nylon Lock Nuts
3#	22	M8 Large Flat Washers	8#	6	M8X1.25-20 T Bolts
4#	20	M8 Nylon Lock Nuts	9#	6	M8 Plastic Washers
5#	2	M6X1-20 Square Head Bolts			

								
1#	2#	3#	4#	5#	6#	7#	8#	9#

Hardware Package B (For Step Pedals Installation)					
Item	QTY	Description	Item	QTY	Description
1#	24	M8X1.25-25 Hex Bolts	3#	24	M8 Lock Washers
2#	24	M8 Large Flat Washers			

		
1#	2#	3#

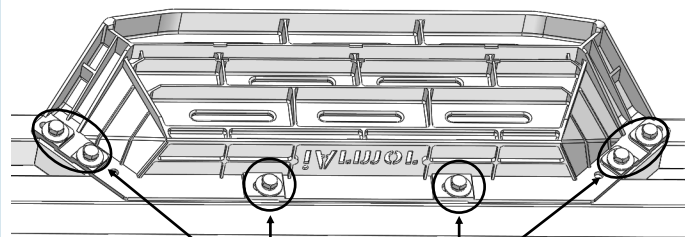
# iArmor®

The instruction here is for your reference only. We strongly recommend the professional installer for best result. We are not responsible for any damage caused by the installation.

## STEP 1

Install (4) Pedals onto the step bars with (24) M8X1.25-25mm Hex Bolts, (24) M8 Large Flat Washers and (24) M8 Lock Washers.

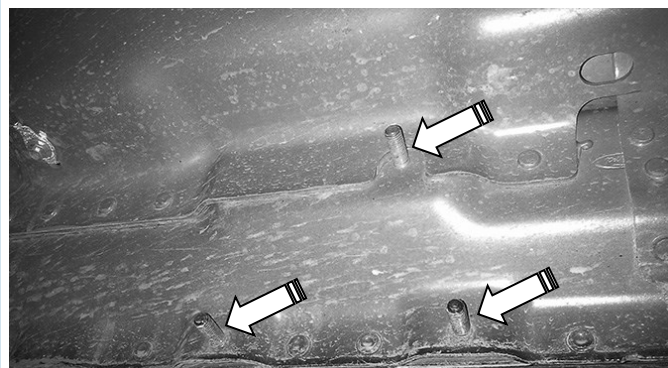
**IMPORTANT:** Don't punch the pedal with any metal hammer within pedal installation, or the pedal will be damaged.



(6) M8X1.25-25 Hex Bolts  
(6) M8 Large Flat Washers  
(6) M8 Lock Washers

## STEP 2

Start the installation from the driver side of the vehicle. Locate the driver side front mounting location on the inner side of the body panel, (Fig 1).

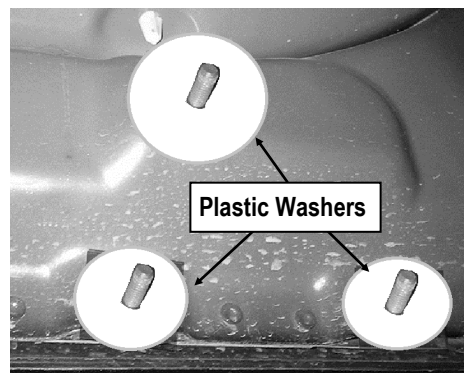


(Fig 1) Driver Side Mounting Location

## STEP 3

Slide (3) Plastic Washers over the (3) factory mounting studs on the body panel, (Fig 2).

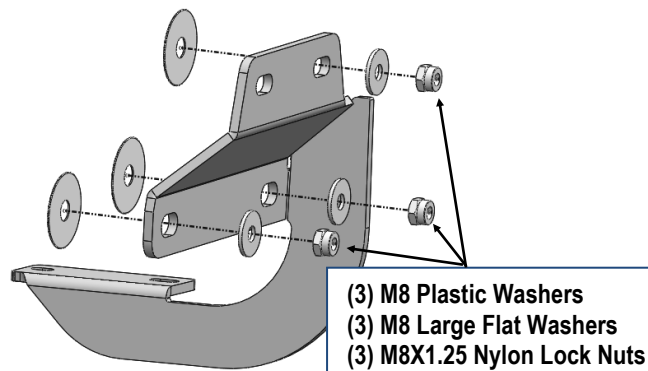
**IMPORTANT:** The Plastic Washers are designed to prevent corrosion between the rocker panel and the steel mounting brackets.



(Fig 2) Thread Plastic Washers Onto (3) Mounting Studs

## STEP 4

Attach the Driver Front Mounting Bracket to the (3) factory studs with (3) M8 Large Flat Washers and (3) M8X1.25 Nylon Lock Nuts, (Fig 3). Leave brackets loose at this time.

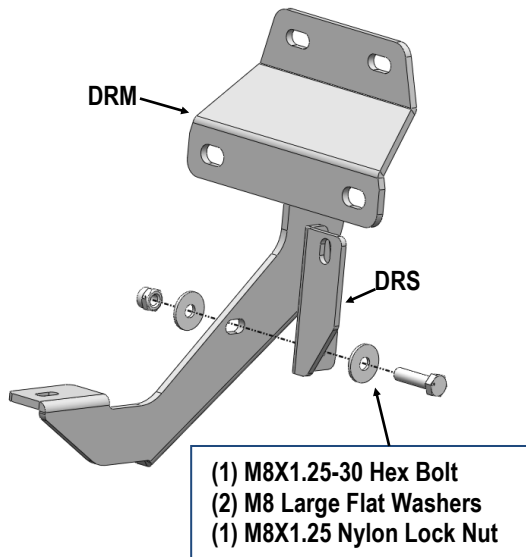


(Fig 3) Driver Front Mounting Bracket Installation

# iArmor®

## STEP 5

Assemble Driver Side Rear Mounting Bracket (**DRM**) and Driver Rear Support Bracket (**DRS**) with (1) M8X1.25-30 Hex Bolt, (2) M8 Large Flat Washers, (1) M8X1.25 Nylon Lock Nut, (**Fig 4**). Do not fully tighten hardware at this time.

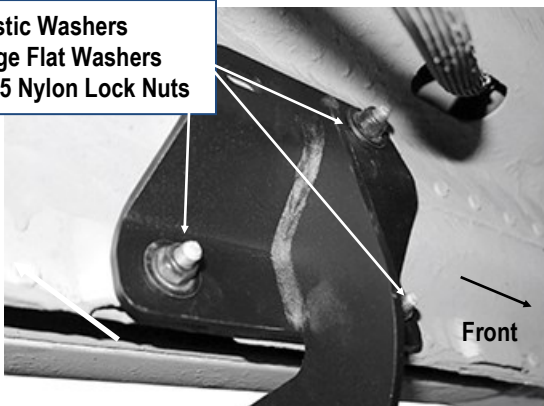


(Fig 4) Driver Side Rear Brackets Assembly

## STEP 6

Repeat **Steps 3&4** to install the Driver Rear Mounting Bracket to the factory studs (**Fig 5**). Do not fully tighten hardware at this time.

- (3) M8 Plastic Washers
- (3) M8 Large Flat Washers
- (3) M8X1.25 Nylon Lock Nuts

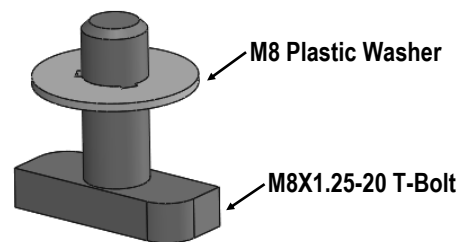


(Fig 5) Driver Rear Mounting Bracket Installed

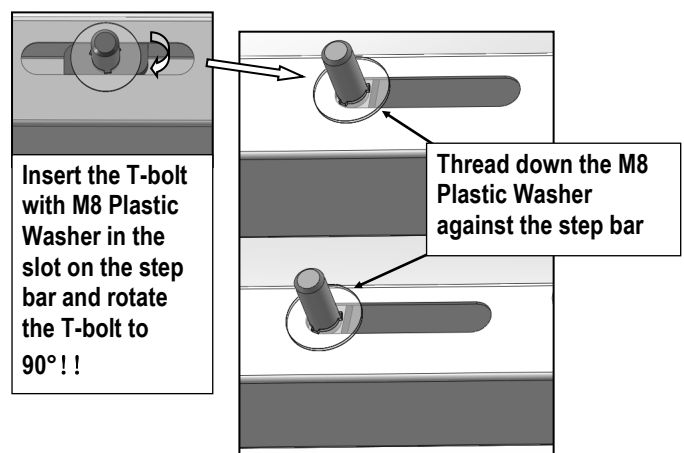
## STEP 7

Once all (2) brackets have been installed, select (3) M8X1.25-20mm T-Bolts, thread (1) M8 Plastic Washer on each T-Bolt, (**Fig 6**). Install the (3) M8X1.25-20mm T-Bolts with plastic washers in the slots on the assembled Driver side step bar. Rotate the T-Bolts to 90 degree, thread down the M8 Plastic Washers against the step bar (**Fig 7**).

**NOTE:** The Plastic Washer is designed to keep the T-Bolt in place to avoid falling into the tube during installation.



(Fig 6) Thread (1) M8 Plastic Washer on each T-Bolt Before Inserting into the slot !!!



(Fig 7) T-Bolt with plastic washer in the slot

# iArmor®

## STEP 8

Attach the Assembled Driver Side Step Bar onto the Mounting Brackets with (3) M8 Plastic Washers, (3) M8X1.25-20mm T-Bolts, (3) M8 Large Flat Washers, (3) M8 Nylon Lock Nuts, (Fig 8). Do not fully tighten hardware at this time.

**NOTE:** Driver Rear Mounting Bracket is located under rear pedal. Slide (1) M6X1-20mm Square Head Bolt into the channel at the bottom of pedal (Fig 9). And secure the Driver Rear Mounting Bracket to the pedal with (1) M6 Large Flat Washer and (1) M6 Nylon Lock Nut, (Fig 8). Do not fully tighten hardware at this time.

## STEP 9

Level and adjust the assembled Step Bar properly and tighten all hardware.

Move to the other side of the vehicle. Repeat **Steps 2-8** for the other side step bar installation.

### Attention

Do periodic inspections to the installation to make sure that all hardware is secure and tight.

In order to protect your bars/boards, please use mild soap/non-abrasive products for cleaning only.

(Fig 8) Driver Side Step Bar Installation

