

# iArmor<sup>®</sup>

## iArmor<sup>®</sup> by APS

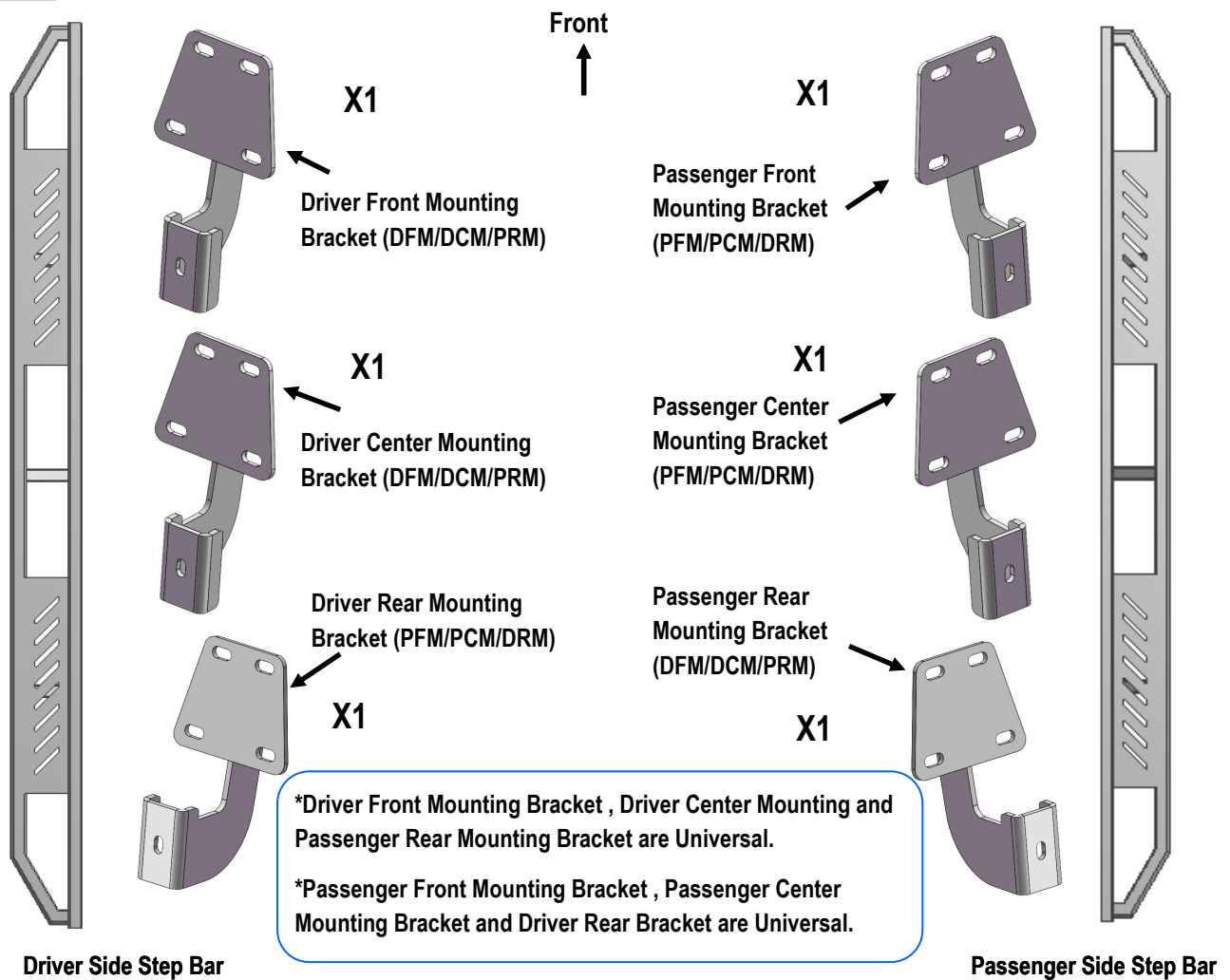
PART#: IA-S159

### BEFORE INSTALLATION

REMOVE CONTENTS FROM BOX. VERIFY ALL PARTS ARE PRESENT. READ INSTRUCTIONS CAREFULLY BEFORE STARTING INSTALLATION. ASSISTANCE IS RECOMMENDED. THANK YOU FOR CHOOSING OUR PRODUCT!

Fastener Size	Tightening Torque (ft-lbs)
6mm	6-7
8mm	16-18
10mm	31-32
12mm	56-58
14mm	92-94

### PART LIST



Customer Support: [info@iarmorauto.com](mailto:info@iarmorauto.com)

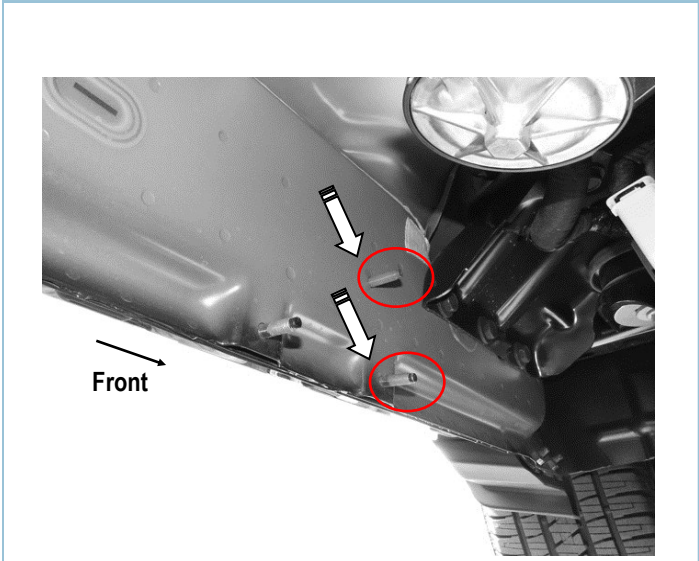
# iArmor®



The instruction here is for your reference only. We strongly recommend the professional installer for best result. We are not responsible for any damage caused by the installation.

## STEP 1

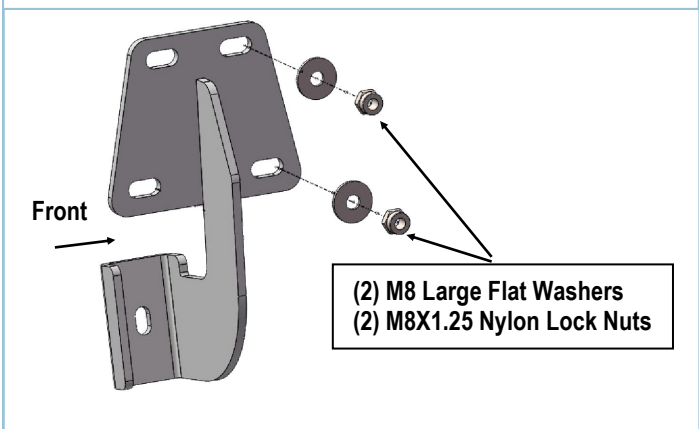
Start the installation under the driver side of the vehicle. Locate the front (2) factory studs along the inner side of the body panel, (Fig 1). **NOTE:** Chase threads on the studs first before installing Brackets to remove paint buildup.



(Fig 1) Driver Front Mounting Bracket Location Pictured

## STEP 2

Select (1) Driver Front Mounting Bracket. **NOTE: Driver Front Mounting Bracket, Driver Center Mounting Bracket and Passenger Rear Mounting Bracket are universal.** Attach the Mounting Bracket to the (2) factory studs with (2) M8 Large Flat Washers and (2) M8X1.25 Nylon Lock Nuts (Fig 2). Leave bracket loose at this time.

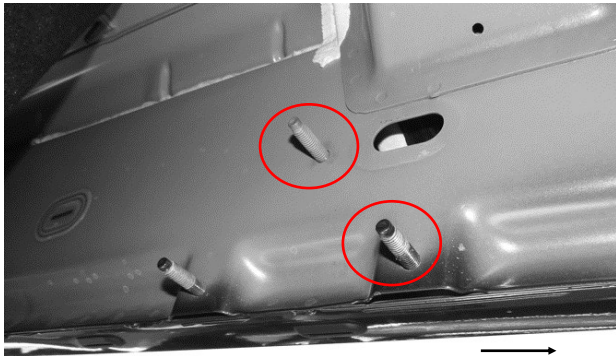


(Fig 2) Driver Front Mounting Bracket Installation

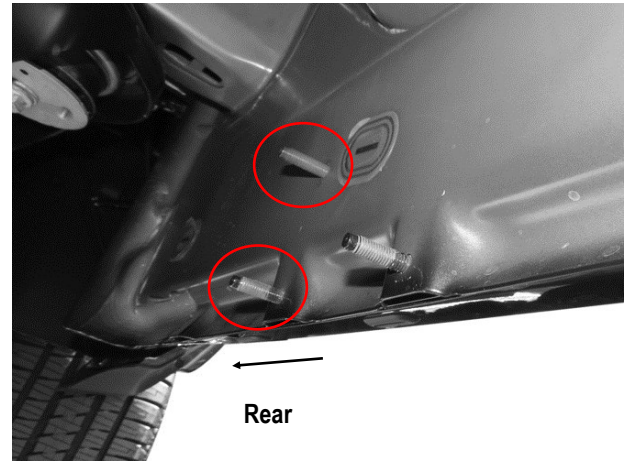
## STEP 3

Move to Driver Side Center & Rear Mounting Locations (Figs 3 & 4). Repeat Steps 1-2 to install the Mounting Brackets. Leave brackets loose at this time.

# iArmor®



(Fig 3) Driver Center Mounting Bracket Location Pictured

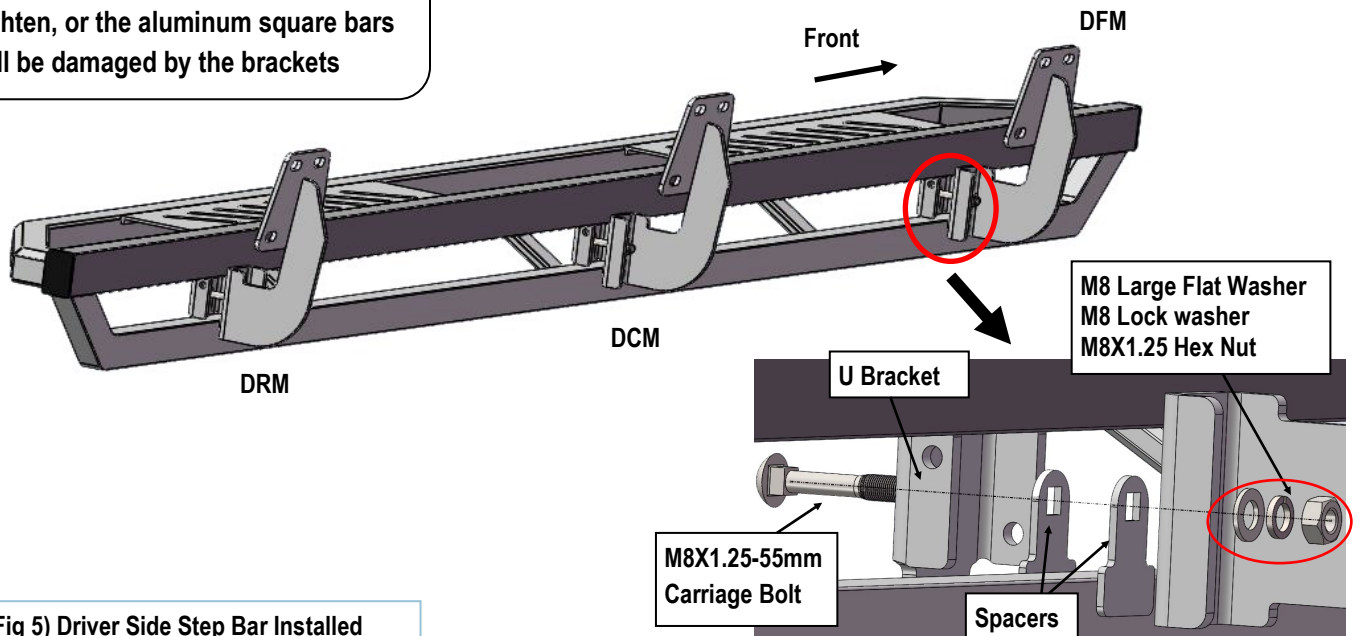


(Fig 4) Driver Rear Mounting Bracket Location Pictured

## STEP 4

Once all (3) driver side mounting brackets are installed, select and attach the Driver Side Step Bar onto the Mounting Brackets with (3) U Brackets, (6) Spacers, (3) M8X1.25-55mm Carriage Bolts, (3) M8 Large Flat Washers, (3) M8 Lock Washers and (3) M8X1.25 Hex Nuts (Fig 5). Do not fully tighten hardware at this time.

**NOTE:** Torque all M8 X1.25-55mm Carriage Bolts to 16~18 lb-ft. Don't over tighten, or the aluminum square bars will be damaged by the brackets



(Fig 5) Driver Side Step Bar Installed

# iArmor<sup>®</sup>

## STEP 5

Properly level and adjust the Step Bar and fully tighten all hardware.

## STEP 6

Move to the passenger side of the vehicle. Repeat **Steps 1-5** to install passenger side step bar.

Installation completed (**Fig 6**).



(Fig 6) Installation Completed

### Attention

**Do periodic inspections to the installation to make sure that all hardware is secure and tight.**

**In order to protect your bars/boards, please use only mild soap/non-abrasive products for cleaning.**