

iArmor®

IARMOR EDGE™

PART#: IA-N258H

BEFORE INSTALLATION

REMOVE CONTENTS FROM BOX. VERIFY ALL PARTS ARE PRESENT. READ INSTRUCTIONS CAREFULLY BEFORE STARTING INSTALLATION. ASSISTANCE IS RECOMMENDED. THANK YOU FOR CHOOSING OUR PRODUCT!

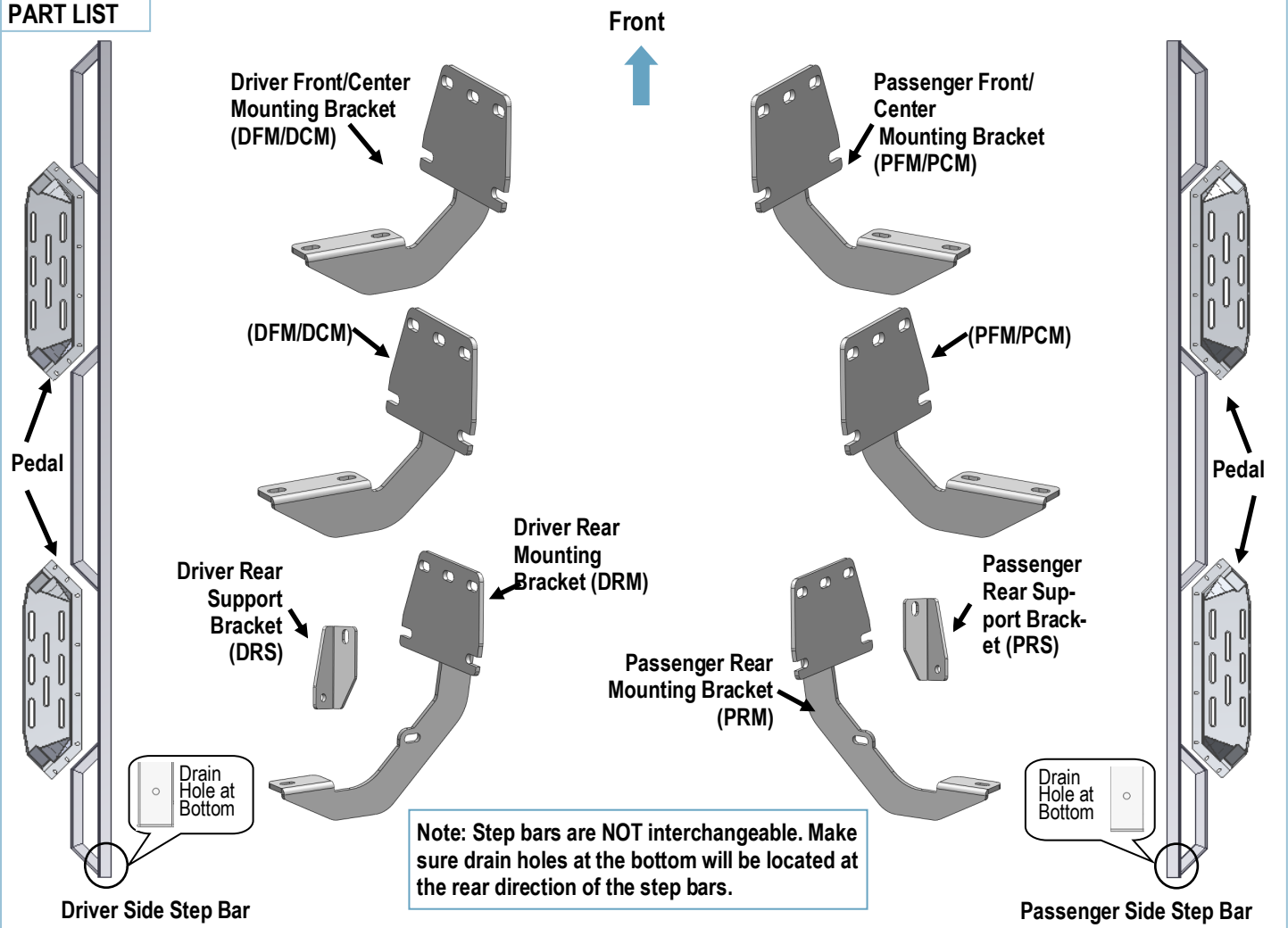
*ROCKER PANEL MOUNT

*DRILLING/TRIMMING NOT REQUIRED

Torque Value

Fastener Size	Tightening Torque (ft-lbs)	Required
6mm	6-7	√
8mm	16-18	√
10mm	31-32	X
12mm	56-58	X
14mm	92-94	X

PART LIST



Customer Support: info@iarmorauto.com

iArmor®

Hardware Package A (For Brackets & Bars Installation)					
Item	QTY	Description	Item	QTY	Description
1#	2	M8X1.25-30 Hex Bolts	5#	2	M6 Large Flat Washers
2#	32	M8 Large Flat Washers	6#	2	M6X1 Nylon Lock Nuts
3#	30	M8X1.25 Nylon Lock Nuts	7#	10	M8X1.25-20 T-Bolts
4#	2	M6X1-20 Square Head Bolt	8#	10	M8 Plastic Washers

1# 2# 3# 4# 5# 6# 7# 8#

Hardware Package B (For Step Pedals Installation)					
Item	QTY	Description	Item	QTY	Description
1#	24	M8X1.25-25 Hex Bolts	3#	24	M8 Lock Washers
2#	24	M8 Large Flat Washers			

1# 2# 3#

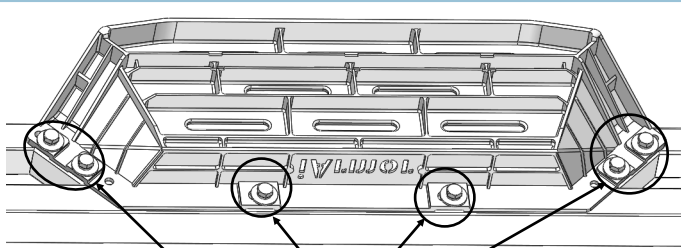
iArmor®

The instruction here is for your reference only. We strongly recommend the professional installer for best result. We are not responsible for any damage caused by the installation.

STEP 1

Install (4) Pedals onto the step bars with (24) M8X1.25-25mm Hex Bolts, (24) M8 Large Flat Washers and (24) M8 Lock Washers.

IMPORTANT: Don't punch the pedal with any metal hammer within pedal installation, or the pedal will be damaged.

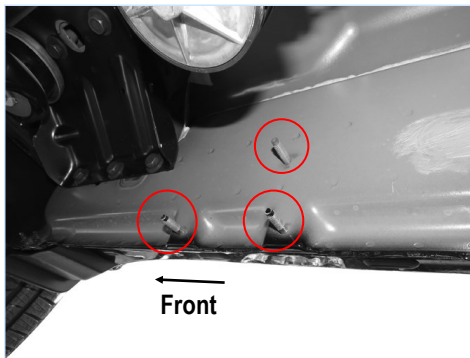


(6) M8X1.25-25 Hex Bolts
(6) M8 Large Flat Washers
(6) M8 Lock Washers

STEP 2

Start the installation under the passenger side of the vehicle. Locate the front (3) factory studs on the body panel, (Fig 1).

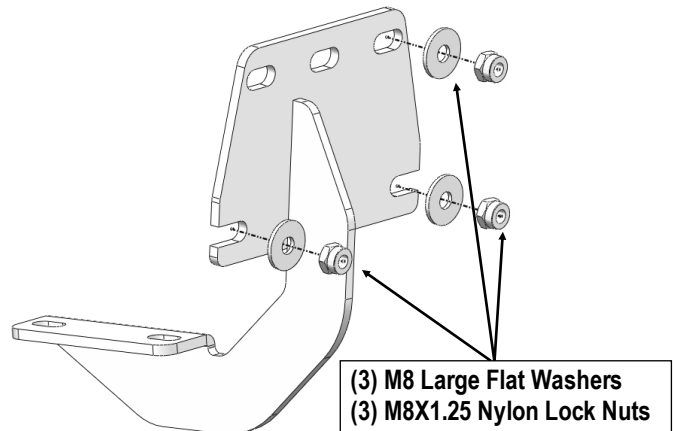
NOTE: Use a wire brush to remove paint buildup on the threaded studs before installing brackets.



(Fig 1) Passenger Side Front Mounting Location

STEP 3

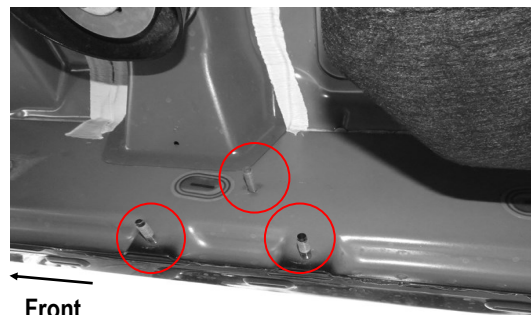
Select (1) Passenger Front Mounting Bracket (PFM/PCM). Attach the Bracket to the (3) factory studs with (3) M8 Large Flat Washers and (3) M8X1.25 Nylon Lock Nuts, (Fig 2). Leave brackets loose at this time.



(Fig 2) Passenger Front Mounting Bracket Installation

STEP 4

Move to the Passenger Center Mounting position (Fig 3), and repeat step 3 to install the Passenger Center Mounting Bracket (PFM/PCM).

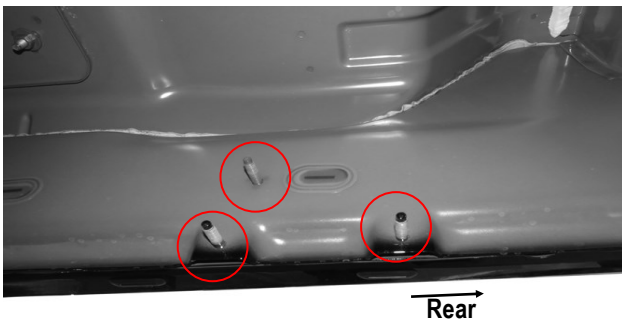


(Fig 3) Passenger Side Center Mounting Location

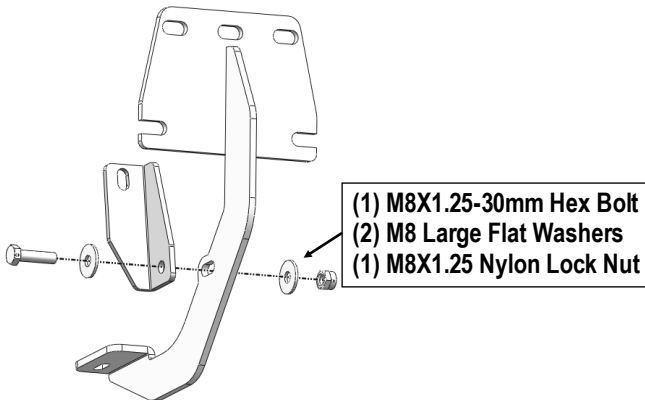
iArmor®

STEP 5

Move to the Passenger Rear Mounting position (**Fig 4**), attach the Passenger Rear Support Bracket (**PRS**) to the Passenger Rear Mounting Bracket (**PRM**) with (1) M8X1.25-30mm Hex Bolt, (2) M8 Large Flat Washers and (1) M8X1.25 Nylon Lock Nut, (**Fig 5**).



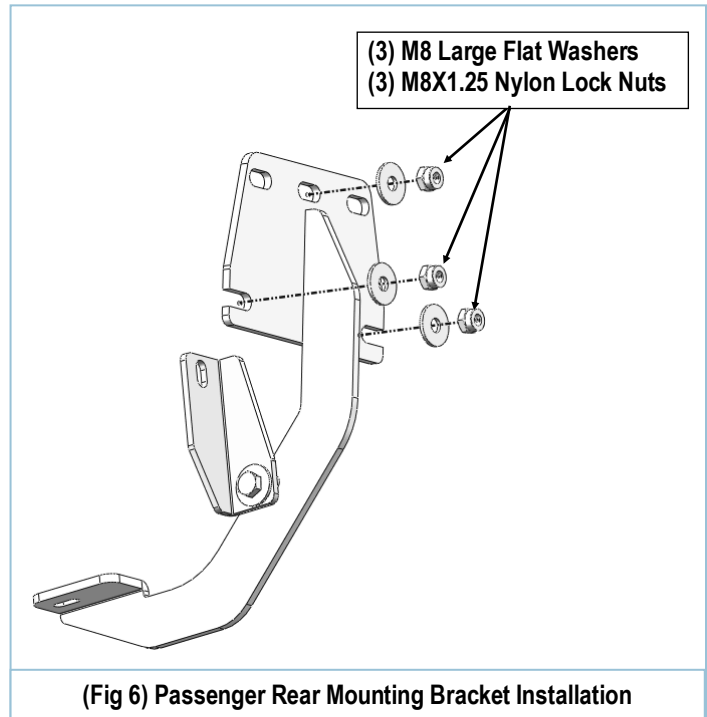
(Fig 4) Passenger Side Rear Mounting Location



(Fig 5) Passenger Side Rear Brackets Assembly

STEP 6

Repeat **step 3** to install the Passenger Rear Mounting Bracket (**PRM**) (**Fig 6**).

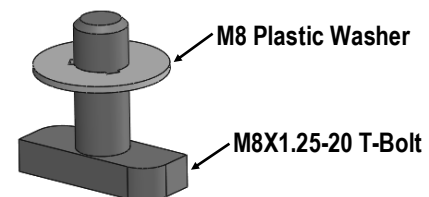


(Fig 6) Passenger Rear Mounting Bracket Installation

STEP 7

Once all (3) brackets have been installed, select (5) M8X1.25-20mm T-Bolts, thread (1) M8 Plastic Washer on each T-Bolt, (**Fig 7**). Install the (5) M8X1.25-20mm T-Bolts with plastic washers in the slots on the assembled Passenger side step bar. Rotate the T-Bolts to 90 degree, thread down the M8 Plastic Washers against the step bar (**Fig 8**).

NOTE: The Plastic Washer is designed to keep the T-Bolt from falling into the bar tube during installation.



(Fig 7) Thread (1) M8 Plastic Washer on each T-Bolt Before Inserting into the bar tube!!!

iArmor®

STEP 9

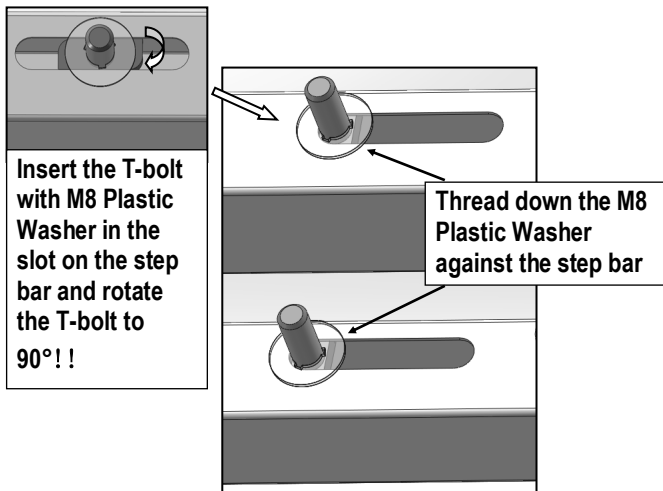
Level and adjust the assembled Step Bar properly and tighten all hardware.

Move to the other side of the vehicle. Repeat **Steps 2-8** for the other Side Step Bar installation.

Attention

Do periodic inspections to the installation to make sure that all hardware is secure and tight.

In order to protect your bars/boards, please use mild soap/non-abrasive products for cleaning only.



(Fig 8) T-Bolt with plastic washer in the slot

STEP 8

Attach the Assembled Passenger Side Step Bar onto the Mounting Brackets with (5) M8 Plastic Washers, (5) M8X1.25-20mm T-Bolts, (5) M8 Large Flat Washers, (5) M8 Nylon Lock Nuts, (**Fig 9**). Do not fully tighten hardware at this time.

NOTE: the Passenger Rear Mounting Bracket is located under the rear pedal. Slide (1) M6X1-20mm Square Head Bolt into the channel at the bottom of the rear pedal (**Fig 10**). And secure the Passenger Rear Mounting Bracket to the pedal with (1) M6 Large Flat Washer and (1) M6 Nylon Lock Nut, (**Fig 9**). Do not fully tighten hardware at this time.

iArmor®

