

iArmor®

IARMOR EDGE™

PART#: IA-N159H

BEFORE INSTALLATION

REMOVE CONTENTS FROM BOX. VERIFY ALL PARTS ARE PRESENT. READ INSTRUCTIONS CAREFULLY BEFORE STARTING INSTALLATION. ASSISTANCE IS RECOMMENDED. THANK YOU FOR CHOOSING OUR PRODUCT!

*ROCKER PANEL MOUNT

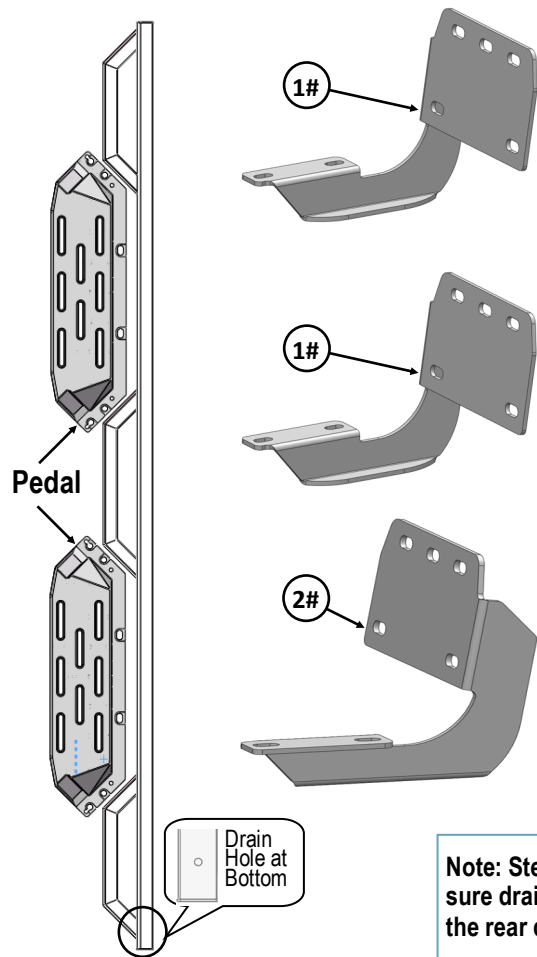
*DRILLING NOT REQUIRED

Torque Value

Fastener Size	Tightening Torque (ft-lbs)	Required
6mm	6-7	X
8mm	16-18	√
10mm	31-32	X
12mm	56-58	X
14mm	92-94	X

PART LIST

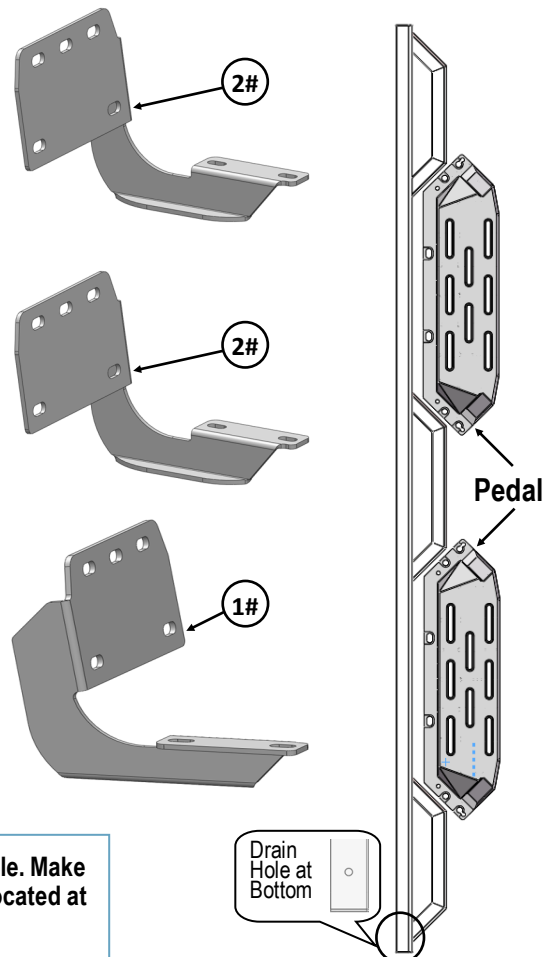
Driver Side Step Bar



Front



Passenger Side Step Bar



Note: Step bars are NOT interchangeable. Make sure drain holes at the bottom will be located at the rear direction of the step bars.

Customer Support: info@iarmorauto.com

iArmor®

Hardware Package A (For Brackets & Bars Installation)

Item	QTY	Description	Item	QTY	Description
1#	3	Driver Front / Center & Passenger Rear Mounting Brackets	4#	30	M8 Nylon Lock Nuts
2#	3	Passenger Front / Center & Driver Rear Mounting Brackets	5#	12	M8X1.25-20 T-Bolts
3#	30	M8 Large Flat Washers	6#	12	M8 Plastic Washers



3 #



4 #



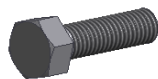
5 #



6 #

Hardware Package B (For Step Pedals Installation)

Item	QTY	Description	Item	QTY	Description
1#	24	M8X1.25-25 Hex Bolts	3#	24	M8 Lock Washers
2#	24	M8 Large Flat Washers			



1#



2#



3#

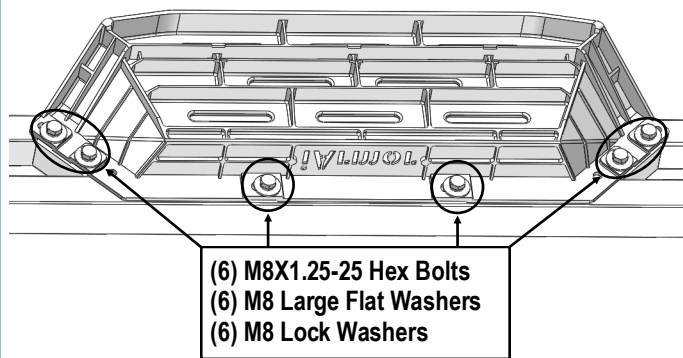
iArmor®

The instruction here is for your reference only. We strongly recommend the professional installer for best result. We are not responsible for any damage caused by the installation.

STEP 1

Install (4) Pedals onto the step bars with (24) M8X1.25-25mm Hex Bolts, (24) M8 Large Flat Washers and (24) M8 Lock Washers.

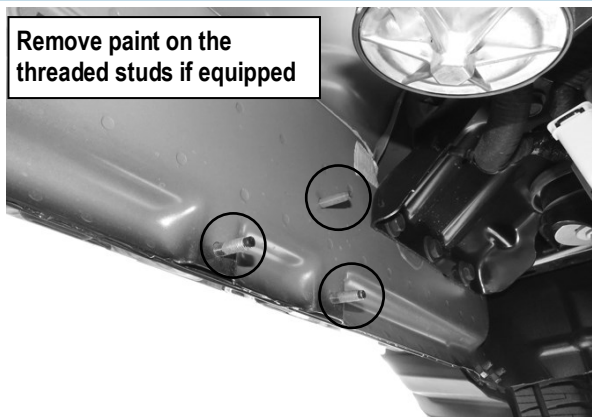
IMPORTANT: Don't punch the pedal with any metal hammer within pedal installation, or the pedal will be damaged.



STEP 2

Start the installation from the Driver side front of the vehicle. Locate the front (3) factory studs along the inner side of the body panel. (Fig 1). Use a wire brush to remove paint on the threaded studs if equipped.

Remove paint on the threaded studs if equipped

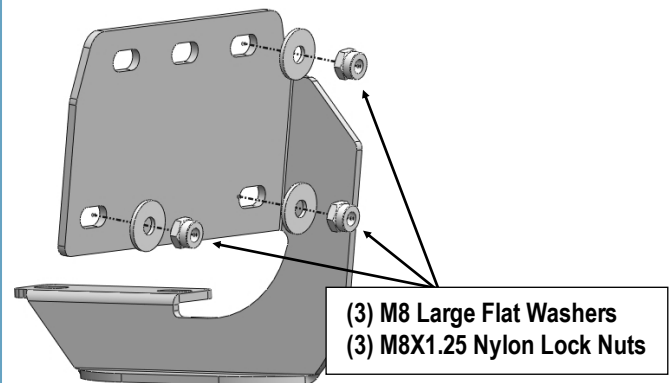


(Fig 1) Driver Side Front Mounting Location

STEP 3

Select (1) Driver Front Mounting Bracket. Attach the mounting bracket to the (3) factory studs with (3) M8 Large Flat Washers and (3) M8X1.25 Nylon Lock Nuts, (Fig 2). Do not fully tighten hardware at this time.

NOTE: Driver Front / Center & Passenger Rear Mounting Brackets are Universal.

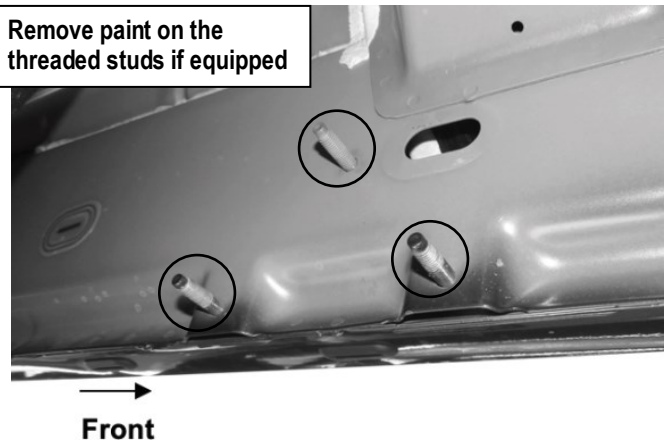


(Fig 2) Driver Front Mounting Bracket Installation

STEP 4

Move to Driver Side Center & Rear Mounting Locations (Figs 3 & 4). Repeat Step 3 to install the Mounting Brackets. Leave brackets loose at this time.

Remove paint on the threaded studs if equipped



(Fig 3) Driver Side Center Mounting Location

iArmor®

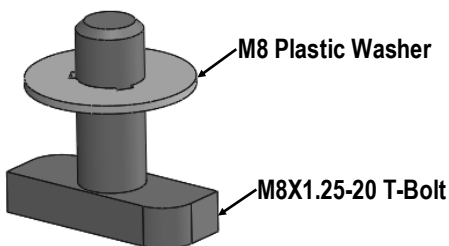


(Fig 4) Driver Rear Mounting Bracket Location

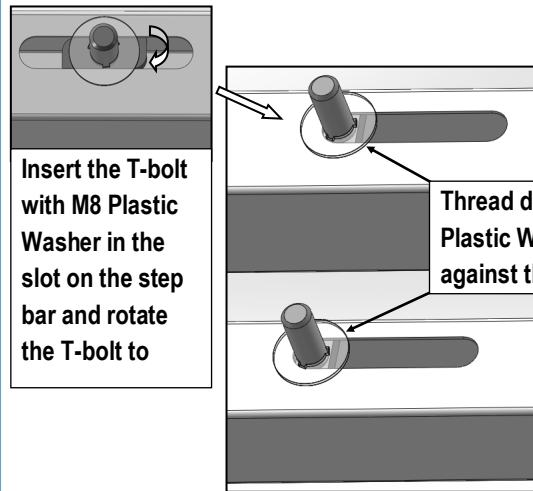
STEP 5

Once all (3) brackets have been installed, select (6) M8X1.25-20mm T-Bolts, thread (1) M8 Plastic Washer on each T-Bolt, (Fig 5). Install the (6) M8X1.25-20mm T-Bolts with plastic washers in the slots on the assembled Driver side step bar. Rotate the T-Bolts to 90 degree, thread down the M8 Plastic Washers against the step bar (Fig 6).

NOTE: The Plastic Washer is designed to keep the T-Bolt from falling into the bar tube during installation.



(Fig 5) Thread (1) M8 Plastic Washer on each T-Bolt Before Inserting into the bar tube!!!



(Fig 6) T-Bolt with plastic washer in the slot

STEP 6

Attach the Assembled Driver Side Step Bar onto the Mounting Brackets with (6) M8 Plastic Washers, (6) M8X1.25-20mm T-Bolts, (6) M8 Large Flat Washers, (6) M8 Nylon Lock Nuts, (Fig 7). Do not fully tighten hardware at this time.

STEP 7

Level and adjust the assembled Step Bar properly and tighten all hardware.

Move to the other side of the vehicle. Repeat **Steps 2-6** to install the other side step bar.

Attention

Do periodic inspections to the installation to make sure that all hardware is secure and tight.

In order to protect your bars/boards, please use mild soap/non-abrasive products for cleaning only.

iArmor®

(Fig 7) Driver Side Step Bar Installation

