

iArmor[®]

iArmor[®] by APS

PART#: IA-S197H

BEFORE INSTALLATION

REMOVE CONTENTS FROM BOX. VERIFY ALL PARTS ARE PRESENT. READ INSTRUCTIONS CAREFULLY BEFORE STARTING INSTALLATION. ASSISTANCE IS RECOMMENDED. THANK YOU FOR CHOOSING OUR PRODUCT!

*ROCKER PANEL MOUNT

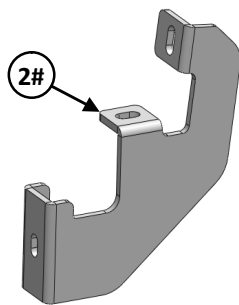
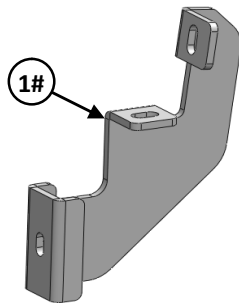
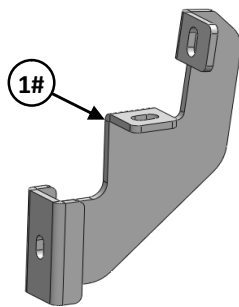
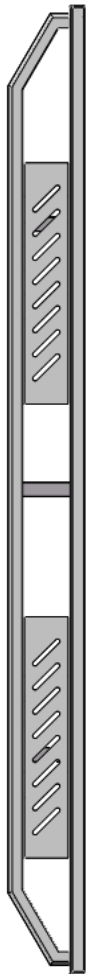
*DRILLING NOT REQUIRED

Torque Value

Fastener Size	Tightening Torque (ft-lbs)	Required
6mm	6-7	X
8mm	16-18	√
10mm	31-32	X
12mm	56-58	X
14mm	92-94	X

PART LIST

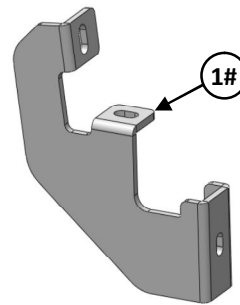
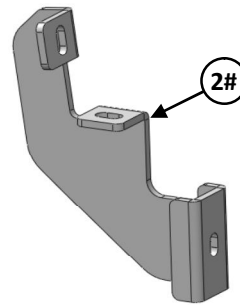
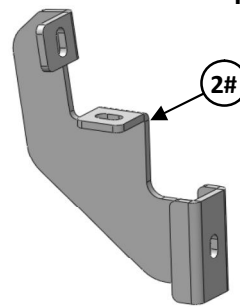
Driver Side Step Bar



Front



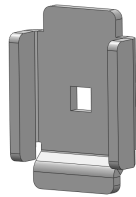
Passenger Side Step Bar



iArmor®

Hardware Package A (For Bracket Installation)

Item	QTY	Description	Item	QTY	Description
1#	3	Driver Front / Center / Passenger Rear Mounting Brackets	5#	12	M8 Large Flat Washers
2#	3	Passenger Front / Center / Driver Rear Mounting Brackets	6#	12	M8 Lock Washers
3#	6	U Brackets	7#	12	M8 Clip Nuts
4#	12	M8X1.25-30mm Hex Bolts			



3 #



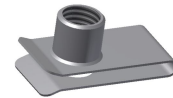
4 #



5 #



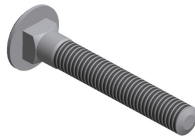
6 #



7 #

Hardware Package B (For Step Bar Installation)

Item	QTY	Description	Item	QTY	Description
1#	6	M8X1.25-55mm Carriage Bolts	3#	6	M8 Lock Washers
2#	6	M8 Large Flat Washers	4#	6	M8 Hex Nuts



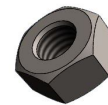
1 #



2#



3 #



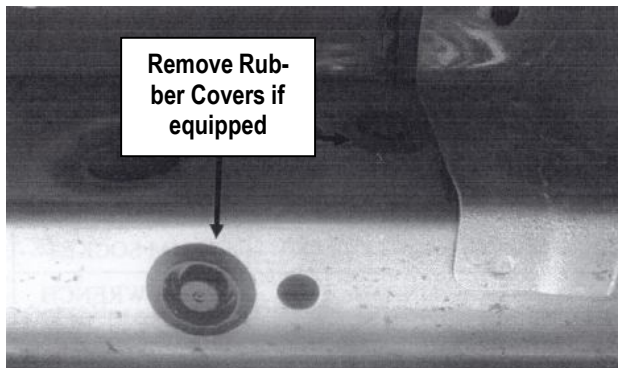
4 #

iArmor®

The instruction here is for your reference only. We strongly recommend the professional installer for best result. We are not responsible for any damage caused by the installation.

STEP 1

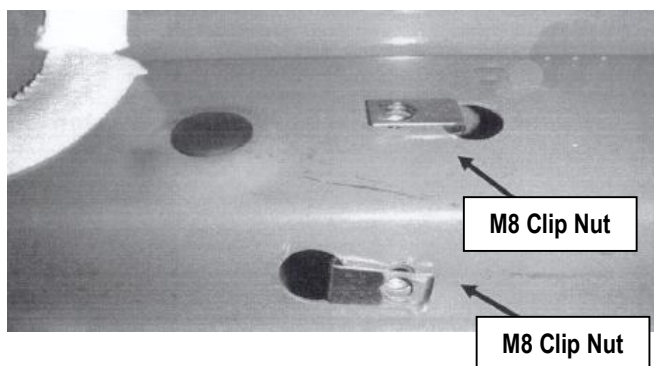
Start the installation under the driver side of the vehicle. If vehicle has plastic covers, remove the designated covers from the rocker panel where mounts will be placed (**Fig 1**).



(Fig 1) Remove Rubber Covers

STEP 2

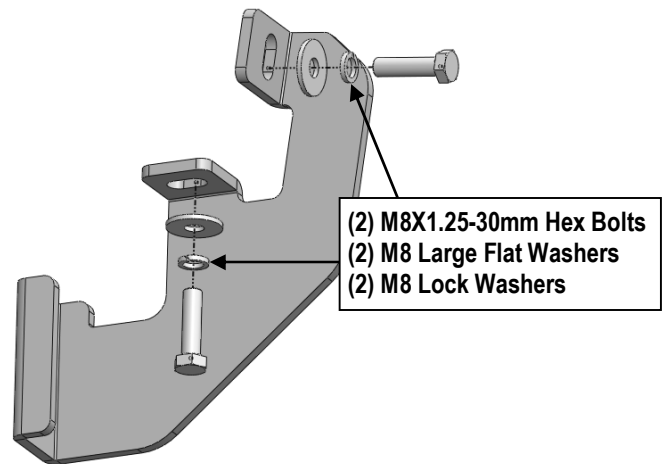
Install M8 Clip Nuts in the holes where the plastic covers were removed, (**Fig 2**).



(Fig 2) Install Supplied M8 Clip Nuts In Designated Areas

STEP 3

Loosely install mounting brackets to the installed M8 Clip Nuts with (2) M8X1.25-30mm Hex Bolts, (2) M8 Large Flat Washers, (2) M8 Lock Washers, (**Fig 3**). Do not fully tighten hardware at this time.



(Fig 3) Driver Front Mounting Bracket Installation

STEP 4

Repeat **Steps 2-3** to install the remaining Driver Center and Driver Rear Mounting Brackets on the driver side mounting locations along the body panel.

STEP 5

Once all (3) driver side mounting brackets are installed, select and attach the Driver Side Step Bar onto the Mounting Brackets with (3) U Brackets, (3) M8X1.25-55 Carriage Bolts, (3) M8 Large Flat Washers, (3) M8 Lock Washers and (3) M8X1.25 Hex Nuts, (**Fig 4**). Do not fully tighten hardware at this time.

iArmor®

STEP 6

Properly level and adjust the Step Bar and fully tighten all hardware.

STEP 7

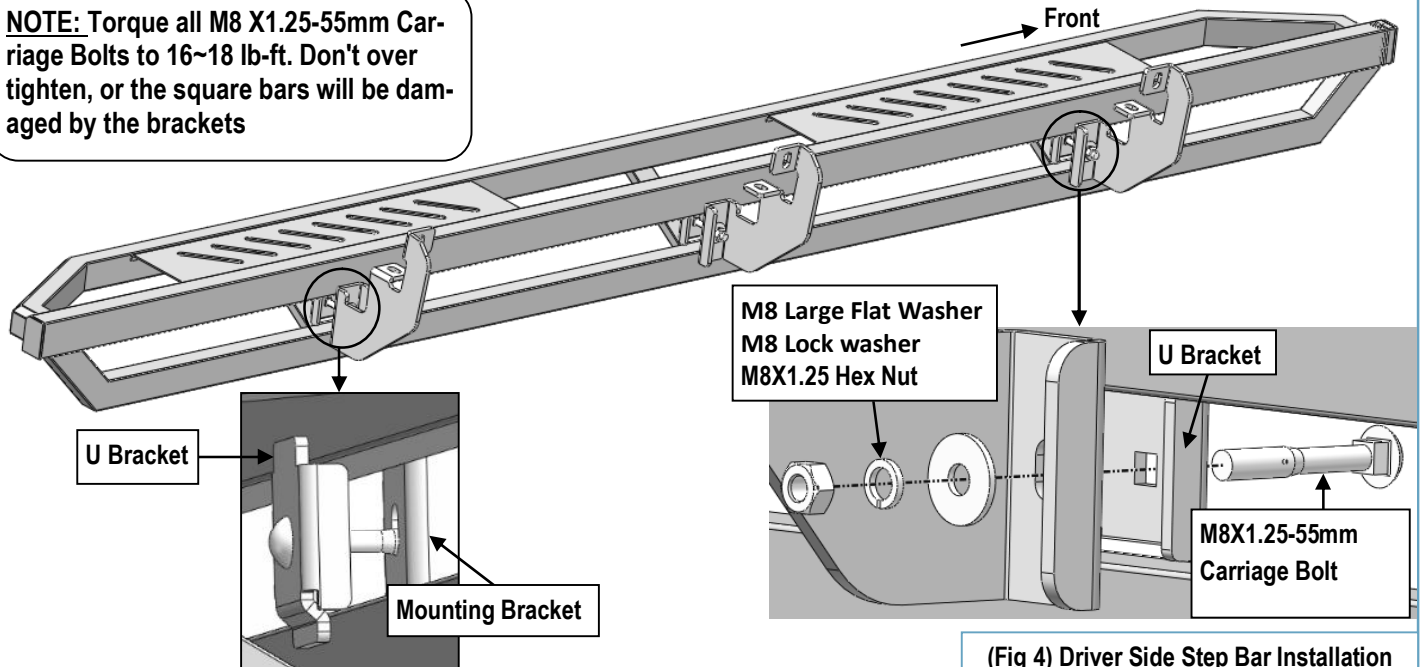
Move to the passenger side of the vehicle. Repeat **Steps 1-6** to install the passenger side step bar.

Installation completed.

Attention

Do periodic inspections to the installation to make sure that all hardware is secure and tight.
In order to protect your bars/boards, please use mild soap/non-abrasive products for cleaning only.

NOTE: Torque all M8 X1.25-55mm Carriage Bolts to 16~18 lb-ft. Don't over tighten, or the square bars will be damaged by the brackets



(Fig 4) Driver Side Step Bar Installation