

iArmor[®]

iArmor[®] by APS

PART#: IA-S133H

BEFORE INSTALLATION

REMOVE CONTENTS FROM BOX. VERIFY ALL PARTS ARE PRESENT. READ INSTRUCTIONS CAREFULLY BEFORE STARTING INSTALLATION. ASSISTANCE IS RECOMMENDED. THANK YOU FOR CHOOSING OUR PRODUCT!

*ROCKER PANEL MOUNT

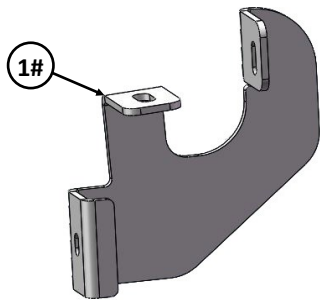
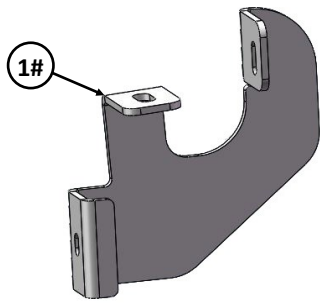
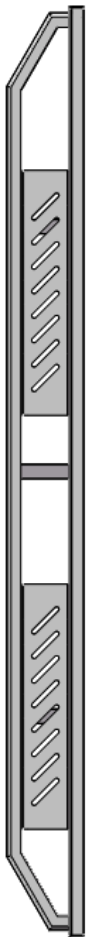
*DRILLING NOT REQUIRED

Torque Value

Fastener Size	Tightening Torque (ft-lbs)	Required
6mm	6-7	X
8mm	16-18	√
10mm	31-32	√
12mm	56-58	X
14mm	92-94	X

PART LIST

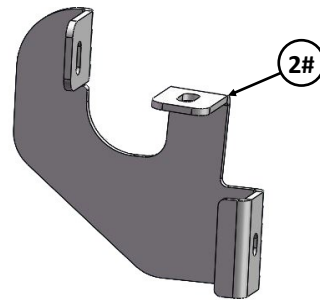
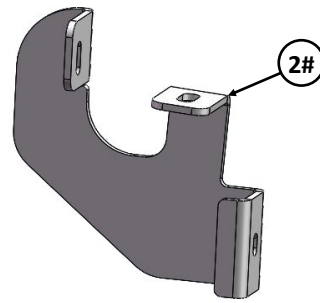
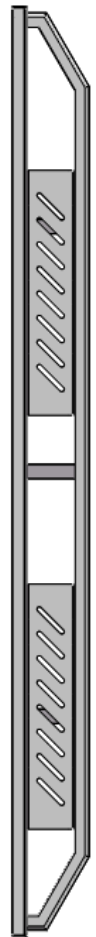
Driver Side Step Bar



Front



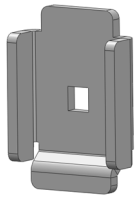
Passenger Side Step Bar



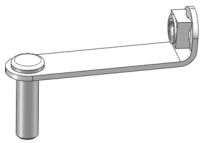
iArmor[®]

Hardware Package A (For Bracket Installation)

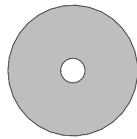
Item	QTY	Description	Item	QTY	Description
1#	2	Driver Front / Rear Mounting Brackets	7#	4	M10 Lock Washers
2#	2	Passenger Front / Rear Mounting Brackets	8#	4	M10X1.5 Hex Nuts
3#	4	U Brackets	9#	4	M8X1.25-30mm Hex Bolts
4#	4	M10 Bolt / M8 Nut Plates	10#	4	M8 Large Flat Washers
5#	4	M10 Plastic Washers	11#	4	M8 Lock Washers
6#	4	M10 Large Flat Washers			



3 #



4 #



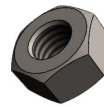
5 #



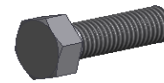
6 #



7 #



8 #



9 #



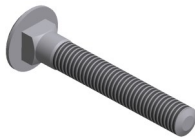
10 #



11 #

Hardware Package B (For Step Bar Installation)

Item	QTY	Description	Item	QTY	Description
1#	4	M8X1.25-55mm Carriage Bolts	3#	4	M8 Lock Washers
2#	4	M8 Large Flat Washers	4#	4	M8 Hex Nuts



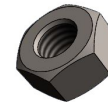
1 #



2 #



3 #



4 #

iArmor®

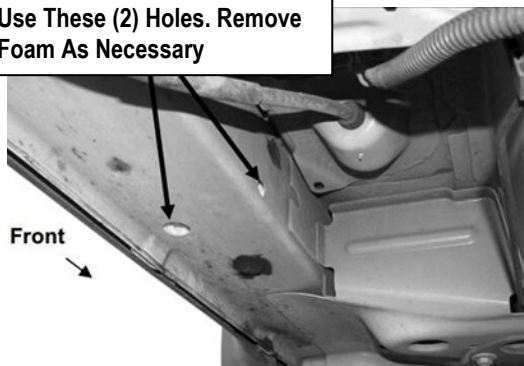
The instruction here is for your reference only. We strongly recommend the professional installer for best result. We are not responsible for any damage caused by the installation.

STEP 1

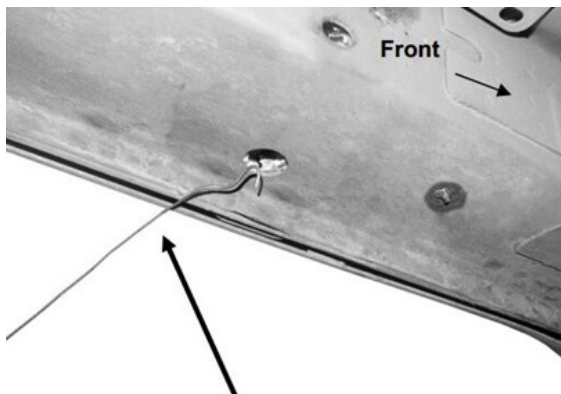
Start installation on the driver side. Locate the factory holes at the bottom and inner side of the floor panel, (Fig 1).

IMPORTANT: On some vehicles, the body panel may be filled with expanding foam insulation. Clear out the foam inside the mounting holes, (Fig 2).

Use These (2) Holes. Remove Foam As Necessary



(Fig 1) Driver Side Front Mounting Location



(Fig 2) Clear Out The Foam In The Mounting Holes (Use Wire To Pull Foam From Floor Panel)

STEP 2

Select (1) M10 Bolt / M8 Nut Plate. Insert the bent end with the 8mm nut into the hole in the bottom of the floor panel, (Fig 3). Line up the hex nut with the hole in the side of the floor panel. Thread (1) M10 Plastic Washer onto the M10 Bolt end of the Bolt /Nut Plate, (Fig 3). **NOTE:** The Plastic Washer is provided to hold the Bolt /Nut Plate in position during Bracket installation.

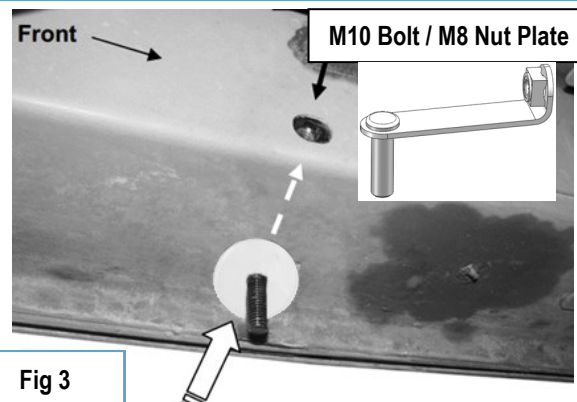
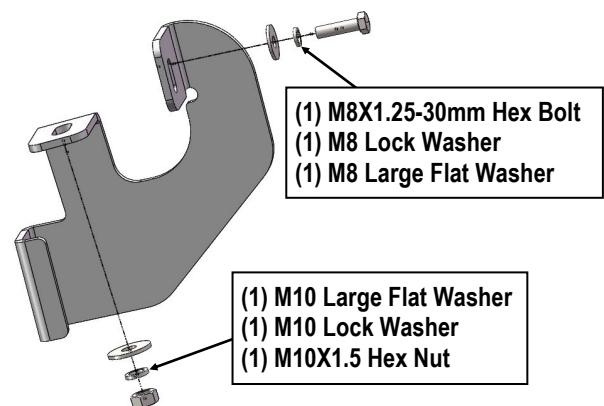


Fig 3

STEP 3

Select (1) Driver Front Mounting Bracket. Attach the Bracket to the installed M10 Bolt /M8 Nut Plate with (1) M10 Large Flat Washer, (1) M10 Lock Washer and (1) M10X1.5 Hex Nut. Attach the Bracket to the M8 Nut with (1) M8X1.25-30mm Hex Bolt, (1) M8 Lock Washer and (1) M8 Large Flat Washer, (Fig 4). Do not fully tighten hardware at this time.



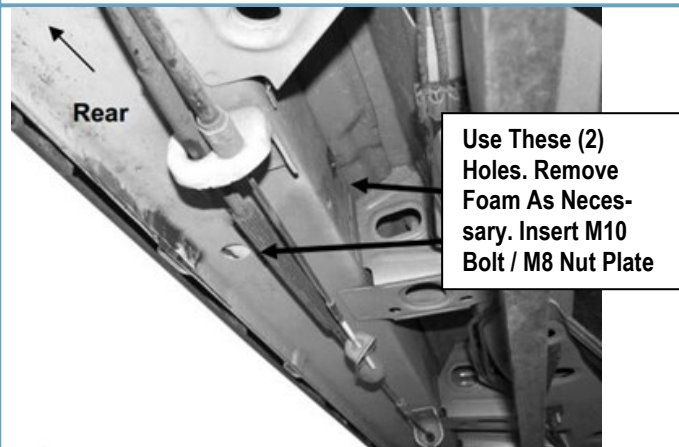
(Fig 4) Driver Front Mounting Bracket Installation

iArmor[®]

STEP 4

Move to the Driver Side Rear Mounting Location of the vehicle. Locate the round hole in the bottom of the floor panel as described in **Step 1, (Fig 5)**. Repeat **Steps 2 – 3** to install the Driver Rear Mounting Bracket in the rear location.

Note: Driver Front Mounting Bracket and Driver Rear Mounting Bracket are universal.



(Fig 5) Driver Side Rear Mounting Location

STEP 5

Once all (2) driver side mounting brackets are installed, select and attach the Driver Side Step Bar onto the Mounting Brackets with (2) U Brackets, (2) M8X1.25-55mm Carriage Bolts, (2) M8 Large Flat Washers, (2) M8 Lock Washers and (2) M8X1.25 Hex Nuts, **(Fig 6)**. Do not fully tighten hardware at this time.

STEP 6

Properly level and adjust the Step Bar and fully tighten all hardware.

STEP 7

Move to the passenger side of the vehicle. Repeat **Steps 1-6** to install the passenger side step bar.

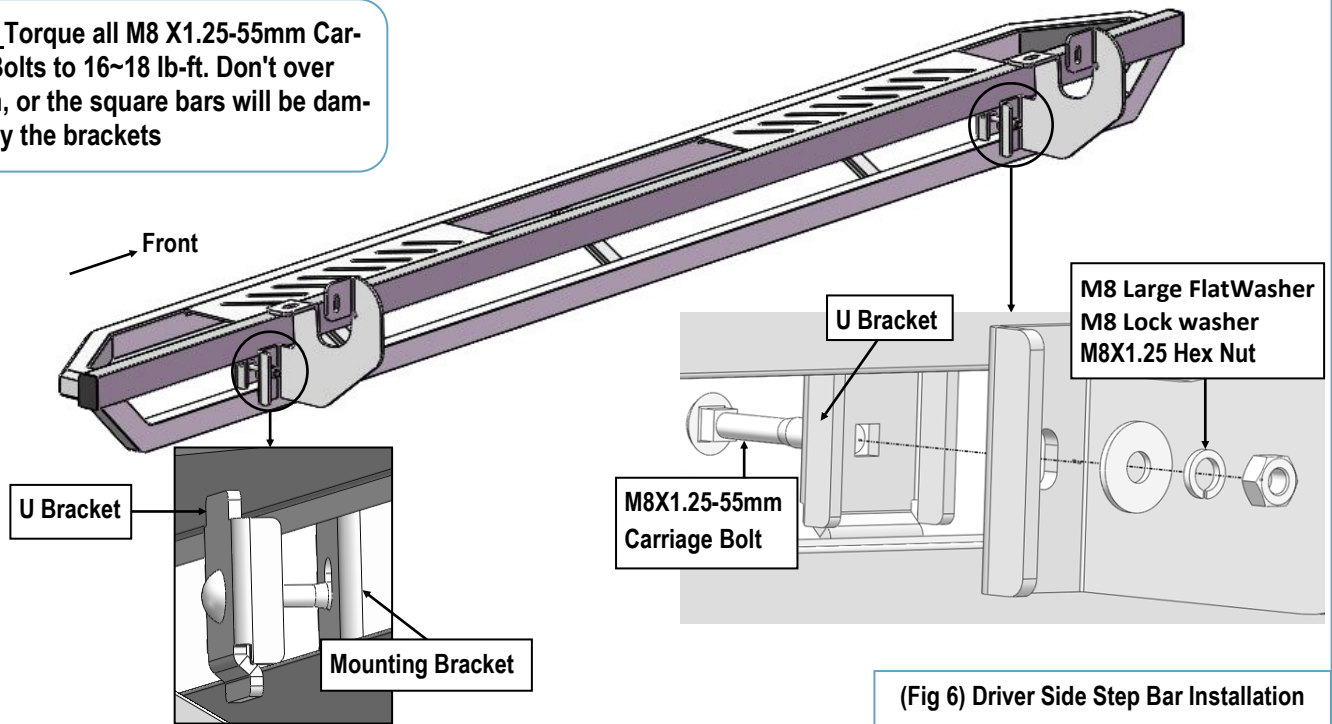
Installation completed.

Attention

Do periodic inspections to the installation to make sure that all hardware is secure and tight.
In order to protect your bars/boards, please use mild soap/non-abrasive products for cleaning only.

iArmor[®]

NOTE: Torque all M8 X1.25-55mm Carriage Bolts to 16~18 lb-ft. Don't over tighten, or the square bars will be damaged by the brackets



(Fig 6) Driver Side Step Bar Installation