

# iArmor®

## IARMOR EDGE™

PART#: IA-N296H

### BEFORE INSTALLATION

REMOVE CONTENTS FROM BOX. VERIFY ALL PARTS ARE PRESENT. READ INSTRUCTIONS CAREFULLY BEFORE STARTING INSTALLATION. ASSISTANCE IS RECOMMENDED. THANK YOU FOR CHOOSING OUR PRODUCT!

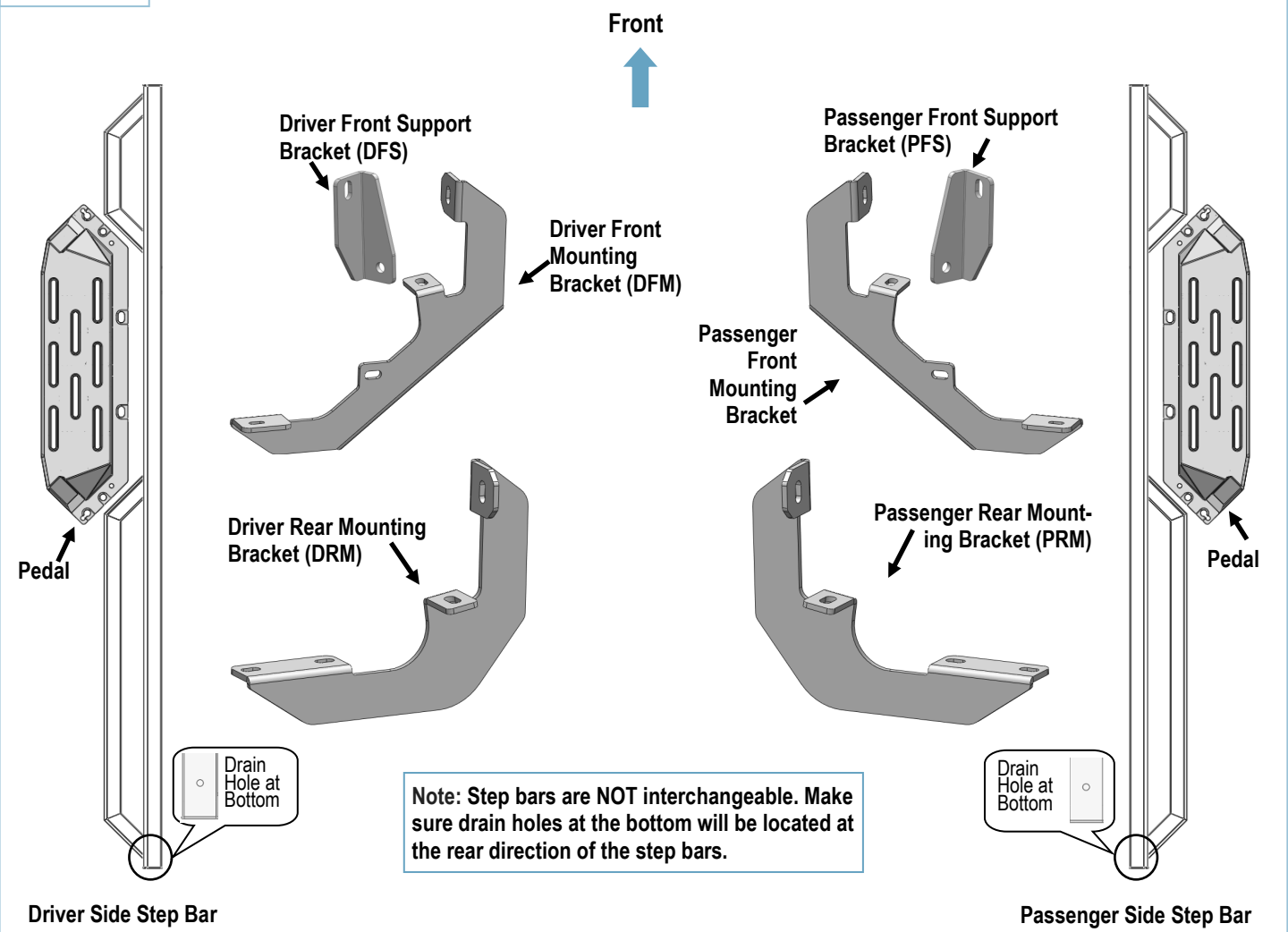
\*ROCKER PANEL MOUNT

\*DRILLING NOT REQUIRED

### Torque Value

Fastener Size	Tightening Torque (ft-lbs)	Required
6mm	6-7	√
8mm	16-18	√
10mm	31-32	X
12mm	56-58	X
14mm	92-94	X

### PART LIST

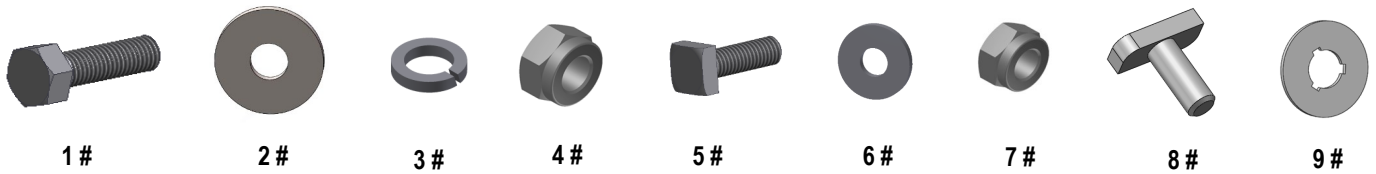


Customer Support: [info@iarmorauto.com](mailto:info@iarmorauto.com)

# iArmor®

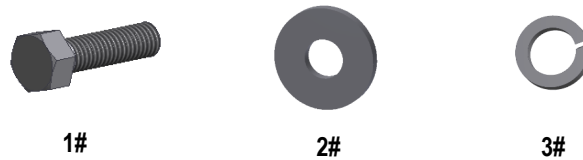
## Hardware Package A (For Brackets & Bars Installation)

Item	QTY	Description	Item	QTY	Description
1#	10	M8X1.25-30 Hex Bolts	6#	2	M6 Large Flat Washers
2#	18	M8 Large Flat Washers	7#	2	M6X1 Nylon Lock Nuts
3#	8	M8 Lock Washers	8#	6	M8X1.25-20 T-Bolts
4#	8	M8 Nylon Lock Nuts	9#	6	M8 Plastic Washers
5#	2	M6X1-20 Square Head Bolts			



## Hardware Package B (For Step Pedals Installation)

Item	QTY	Description	Item	QTY	Description
1#	12	M8X1.25-25 Hex Bolts	3#	12	M8 Lock Washers
2#	12	M8 Large Flat Washers			



Customer Support: [info@iarmorauto.com](mailto:info@iarmorauto.com)

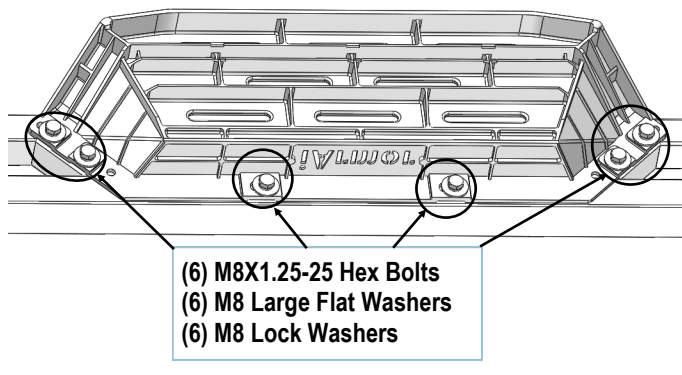
# iArmor<sup>®</sup>

The instruction here is for your reference only. We strongly recommend the professional installer for best result. We are not responsible for any damage caused by the installation.

## STEP 1

Install (2) Pedals onto the step bars with (12) M8X1.25-25mm Hex Bolts, (12) M8 Large Flat Washers and (12) M8 Lock Washers.

**IMPORTANT:** Don't punch the pedal with any metal hammer within pedal installation, or the pedal will be damaged.



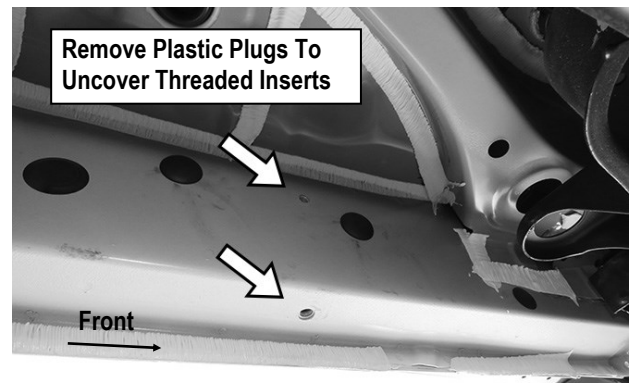
## STEP 2

Start the installation under the Driver side of the vehicle. Locate the plastic plugs along the bottom edge of the body panel. Mounting Brackets will be attached to the threaded mounting holes at the front and rear of the cab.

Remove the plastic plugs from the Driver Side Front Mounting Location. Directly above each threaded insert is a top mounting location with a threaded insert on the side of the body panel, (Fig 1).

Hold a bracket up in place to help determine the correct mounting holes along the body.

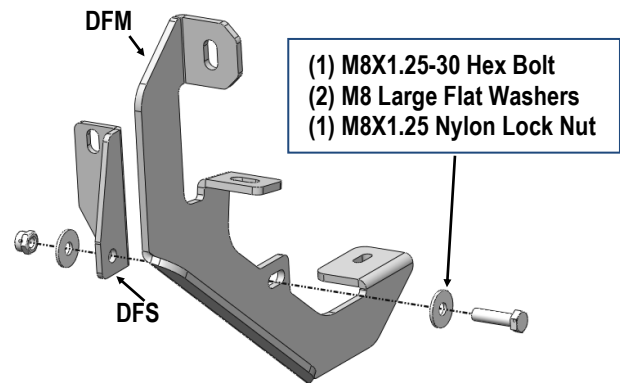
**NOTE:** Thread (1) M8X1.25-30 Hex Bolt into the threaded inserts to clear paint as required.



(Fig 1) Driver Side Front Mounting Location

## STEP 3

Assemble the Driver Front Mounting Bracket (DFM) and Driver Front Support Bracket (DFS) with (1) M8X1.25-30 Hex Bolt, (2) M8 Large Flat Washers and (1) M8X1.25 Nylon Lock Nut, (Fig 2). Do not fully tighten hardware at this time.

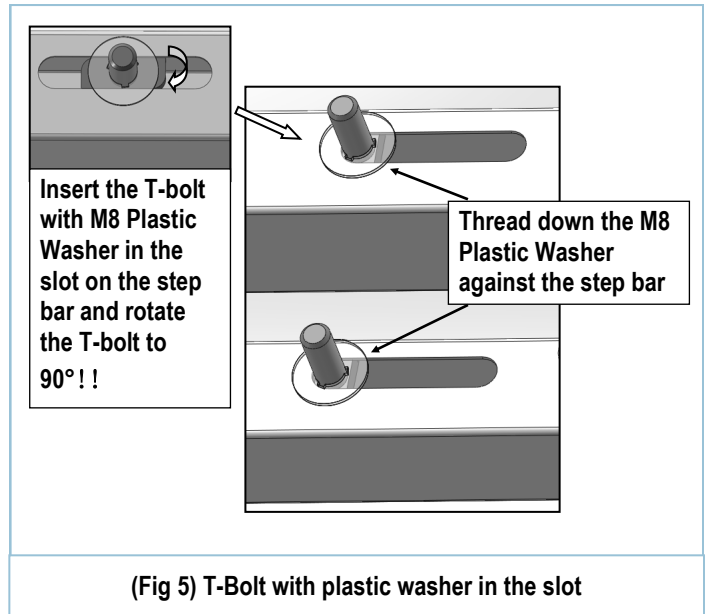
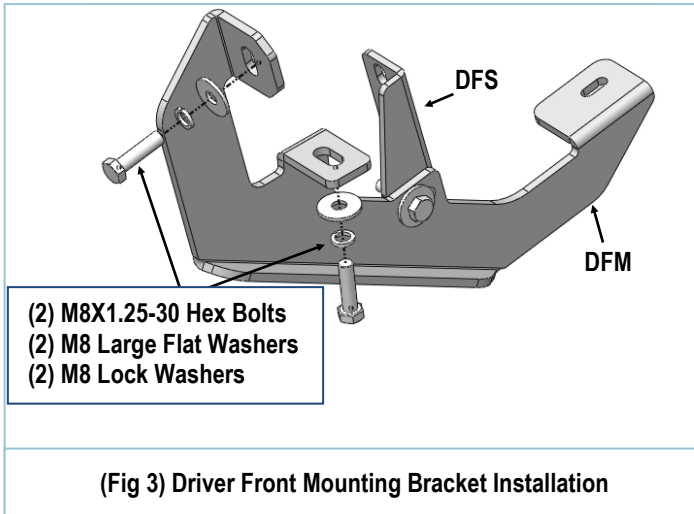


(Fig 2) Driver Front Mounting Bracket Assembly

## STEP 4

Attach the assembled Driver Front Mounting Bracket to the factory threaded holes with (2) M8X1.25-30 Hex Bolts, (2) M8 Lock Washers and (2) M8 Large Flat Washers, (Fig 3). Do not fully tighten hardware.

# iArmor<sup>®</sup>



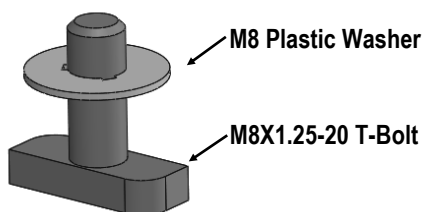
## STEP 5

Move to the Driver Side Rear Mounting Location, repeat Step 4 to install the Driver Rear Mounting Bracket (DRM).

## STEP 6

Once all (2) brackets have been installed, select (3) M8X1.25-20mm T-Bolts, thread (1) M8 Plastic Washer on each T-Bolt, (Fig 4). Install the (3) M8X1.25-20mm T-Bolts with plastic washers in the slots on the assembled step bar. Rotate the T-Bolts to 90 degree, thread down the M8 Plastic Washers against the step bar (Fig 5).

**NOTE:** The Plastic Washer is designed to keep the T-Bolt in place to avoid falling into the tube during installation.



(Fig 4) Thread (1) M8 Plastic Washer on each T-Bolt Before Inserting into the slot !!!

## STEP 7

Attach the Assembled Driver Side Step Bar onto the Mounting Brackets with (3) M8 Plastic Washers, (3) M8X1.25-20mm T-Bolts, (3) M8 Large Flat Washers, (4) M8 Nylon Lock Nuts, (Fig 6). Do not fully tighten hardware at this time.

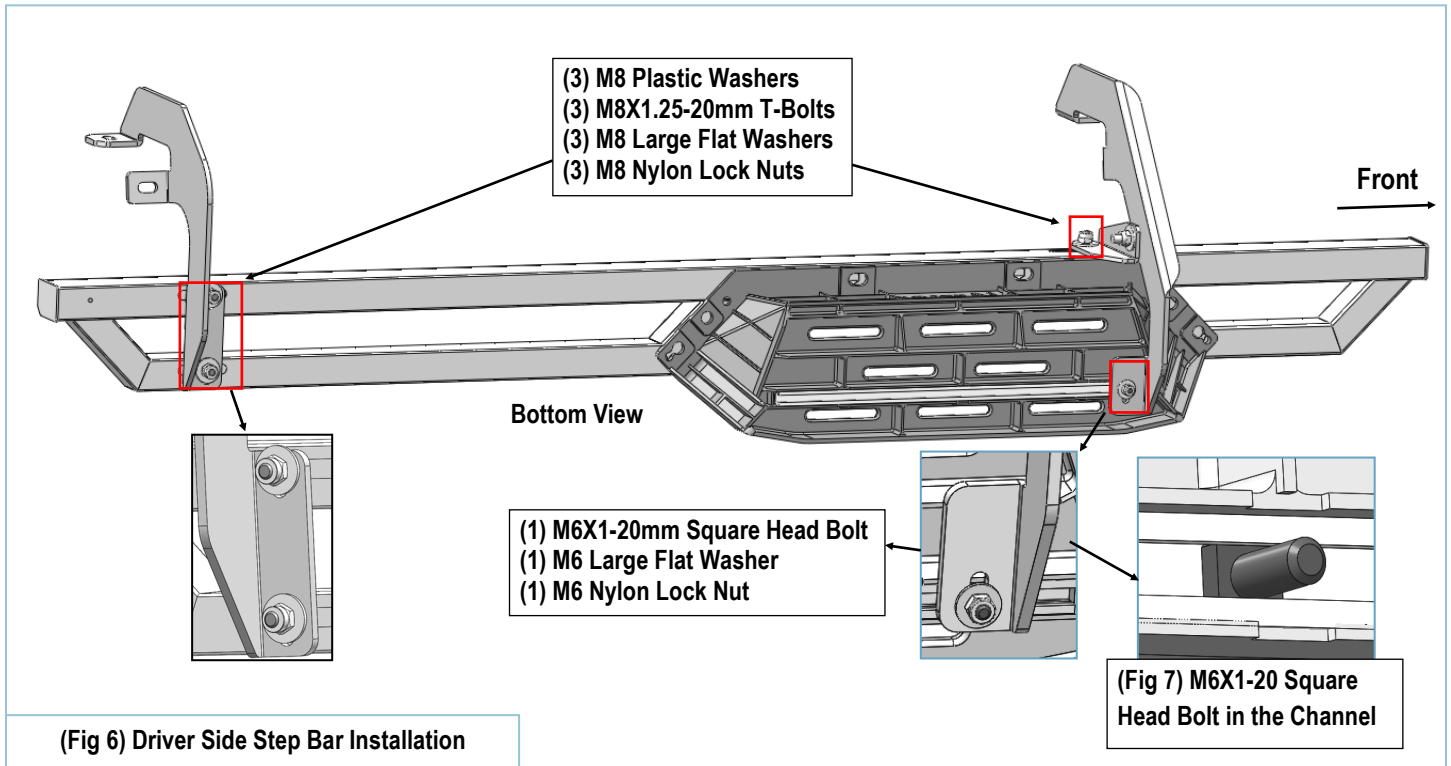
**NOTE:** the Driver Front Mounting Bracket is located under the pedal. Slide (1) M6X1-20mm Square Head Bolt into the channel at the bottom of pedal (Fig 7). And secure the Front Mounting Bracket to the pedal with (1) M6 Large Flat Washer and (1) M6 Nylon Lock Nut, (Fig 6). Do not fully tighten hardware at this time.

## STEP 8

Level and adjust the assembled Step Bar properly and tighten all hardware.

Move to the other side of the vehicle. Repeat **Steps 2-7** for the other Side Step Bar installation.

# iArmor<sup>®</sup>



## Attention

Do periodic inspections to the installation to make sure that all hardware is secure and tight.  
In order to protect your bars/boards, please use mild soap/non-abrasive products for cleaning only.