

IARMOR EDGE™

PART#: IA-N198H

BEFORE INSTALLATION

REMOVE CONTENTS FROM BOX. VERIFY ALL PARTS ARE PRESENT. READ INSTRUCTIONS CAREFULLY BEFORE STARTING INSTALLATION. ASSISTANCE IS RECOMMENDED. THANK YOU FOR CHOOSING OUR PRODUCT!

*ROCKER PANEL MOUNT

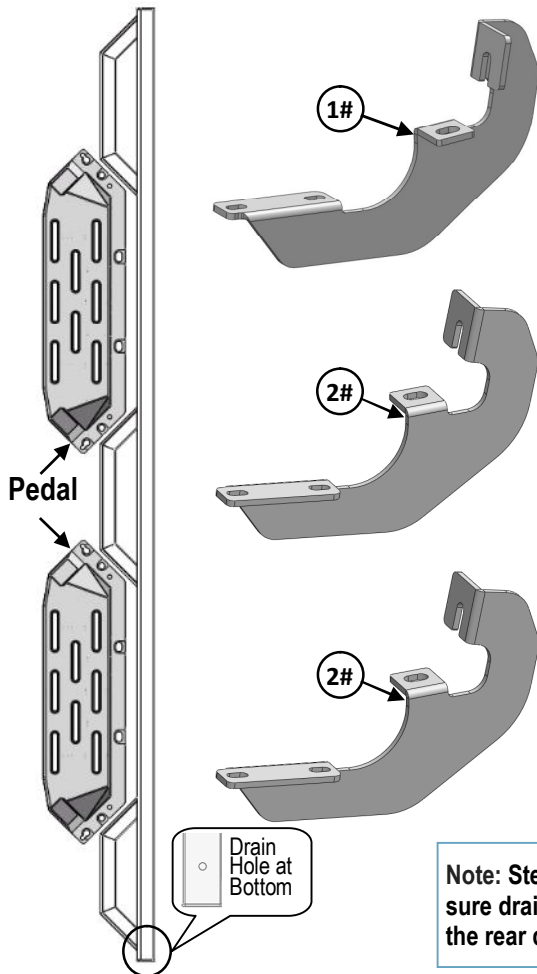
*DRILLING NOT REQUIRED

Torque Value

Fastener Size	Tightening Torque (ft-lbs)	Required
6mm	6-7	X
8mm	16-18	√
10mm	31-32	X
12mm	56-58	X
14mm	92-94	X

PART LIST

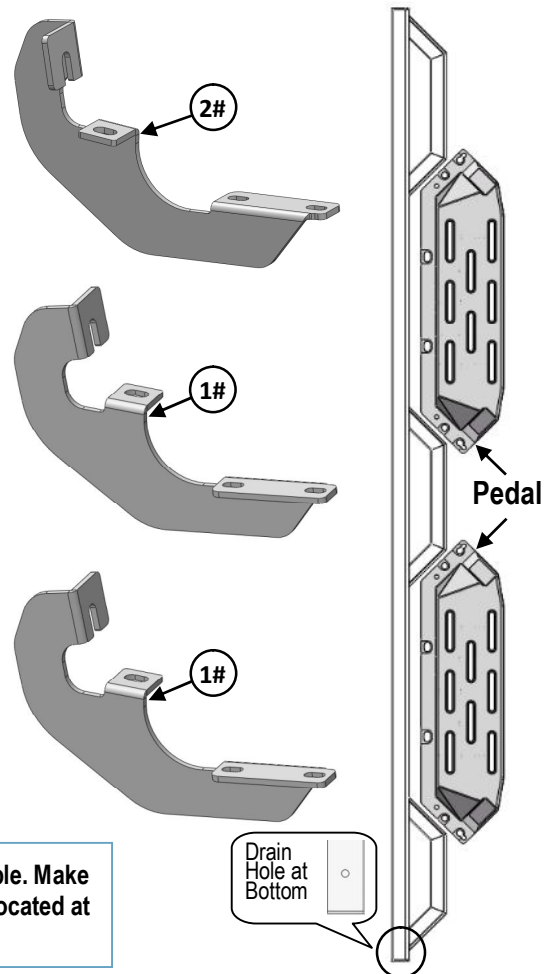
Driver Side Step Bar



Front




Passenger Side Step Bar





Note: Step bars are NOT interchangeable. Make sure drain holes at the bottom will be located at the rear direction of the step bars.


iArmor®


Hardware Package A (For Brackets & Bars Installation)					
Item	QTY	Description	Item	QTY	Description
1#	3	Driver Front / Passenger Center & Rear Mounting Brackets	6#	12	M8 Clip Nuts
2#	3	Passenger Front / Driver Center & Rear Mounting Brackets	7#	12	M8X1.25-20 T-Bolts
3#	12	M8X1.25-30 Hex Bolts	8#	12	M8 Plastic Washers
4#	24	M8 Large Flat Washers	9#	12	M8 Nylon Lock Nuts
5#	12	M8 Lock Washers			



3 #



4 #


5 #



6 #



7 #



8 #


9 #

Hardware Package B (For Step Pedals Installation)					
Item	QTY	Description	Item	QTY	Description
1#	24	M8X1.25-25 Hex Bolts	3#	24	M8 Lock Washers
2#	24	M8 Large Flat Washers			


1#


2#


3#

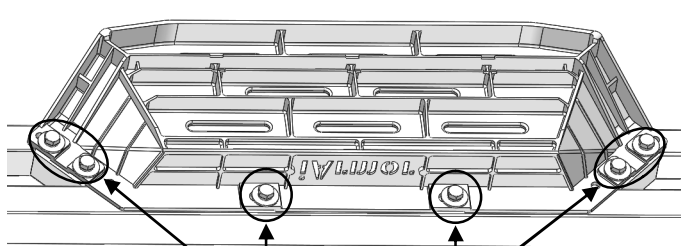
iArmor[®]

The instruction here is for your reference only. We strongly recommend the professional installer for best result. We are not responsible for any damage caused by the installation.

STEP 1

Install (4) Pedals onto the step bars with (24) M8X1.25-25mm Hex Bolts, (24) M8 Large Flat Washers and (24) M8 Lock Washers.

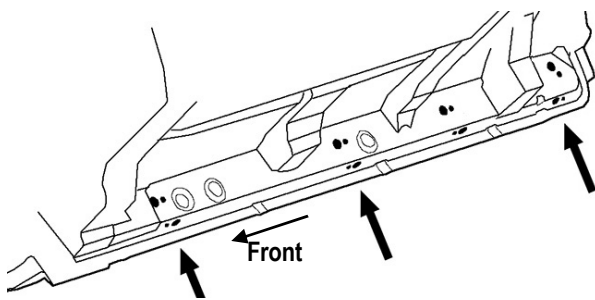
IMPORTANT: Don't punch the pedal with any metal hammer within pedal installation, or the pedal will be damaged.



(6) M8X1.25-25 Hex Bolts
(6) M8 Large Flat Washers
(6) M8 Lock Washers

STEP 2

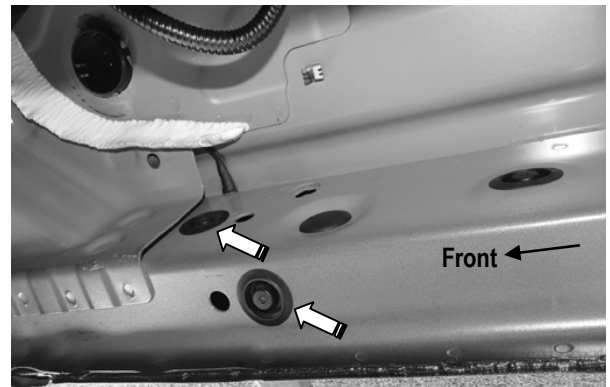
Start the installation from passenger side of the vehicle. Locate the passenger mounting locations along the bottom and inner side of the body panel, (Fig1). **NOTE: It will be helpful for identifying the mounting holes to hold up a mounting bracket in place.**



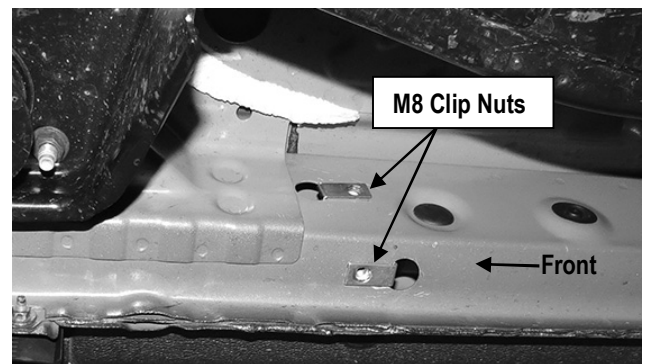
(Fig 1) Passenger side mounting locations
(Along the bottom and inner of body panel)

STEP 3

Remove rubber plugs on the Passenger Side Front Mounting Location on body panel, (Fig 2). Select (2) M8 Clip Nuts. Slide each Clip Nut into each large hole. Line up threaded nut on the Clip Nut with the smaller hole beside the large hole, (Fig 3).



(Fig 2) Passenger Side Front Mounting Location
(Remove the rubber plugs)

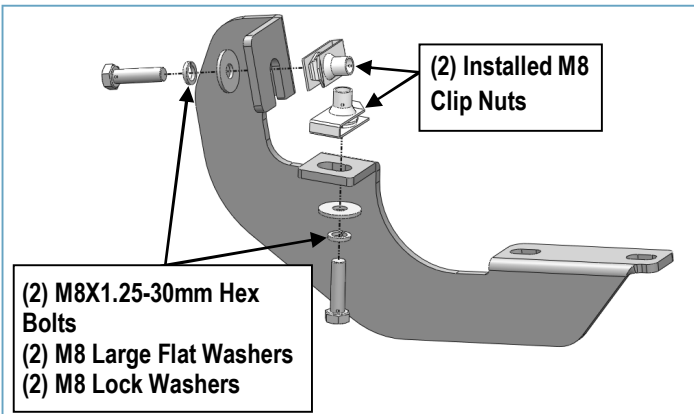


(Fig 3) M8 Clip Nuts Installed
(on the Passenger Side Front Mounting Location)

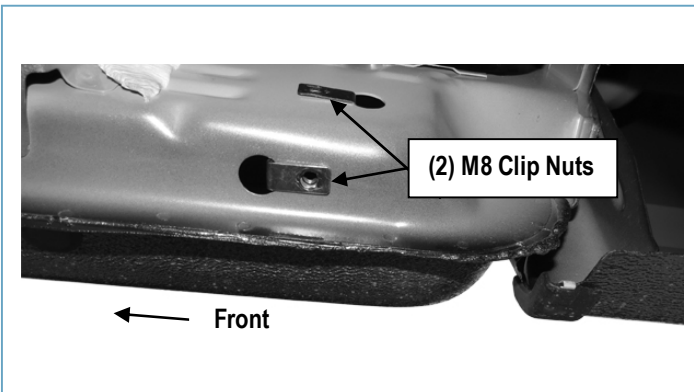
STEP 4

Select (1) Passenger Front Mounting Bracket. Attach the Bracket to the installed (2) M8 Clip Nuts with (2) M8X1.25-30mm Hex Bolts, (2) M8 Lock Washers and (2) M8 Large Flat Washers, (Figs 4 & 5). Do not fully tighten hardware at this time.

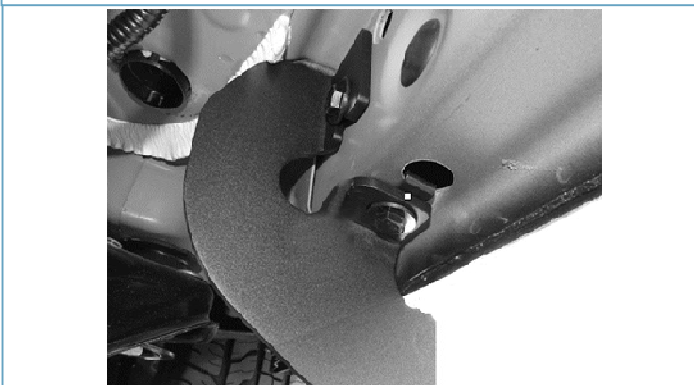
iArmor®



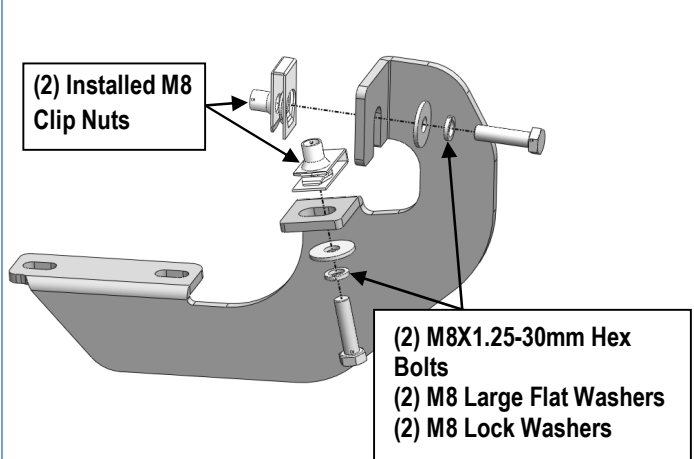
(Fig 4) Passenger Front Mounting Bracket Installation



(Fig 7) Passenger Side Rear Mounting Location



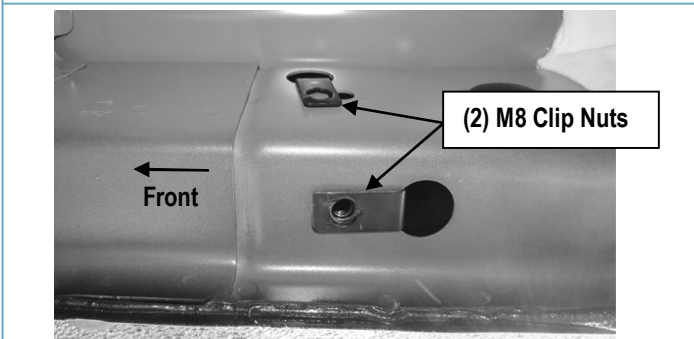
(Fig 5) Passenger Front Mounting Bracket Installed



(Fig 8) Passenger Center & Rear Mounting Bracket Installation

STEP 5

Move to Passenger Side Center & Rear Mounting location along the body panel, (Figs 6 & 7). Repeat Steps 2—4 to install (1) Passenger Center Mounting Bracket and (1) Passenger Rear Mounting Bracket, (Fig 8). Do not fully tighten hardware at this time.



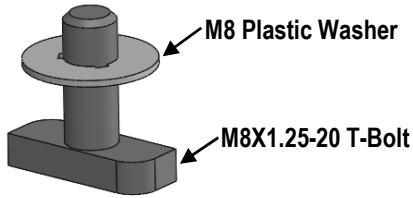
(Fig 6) Passenger Side Center Mounting Location

STEP 6

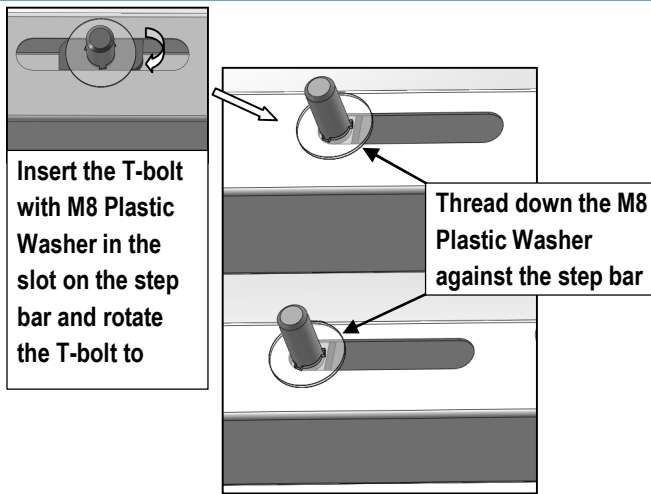
Once all (3) brackets have been installed, select (6) M8X1.25-20mm T-Bolts, thread (1) M8 Plastic Washer on each T-Bolt, (Fig 9). Install the (6) M8X1.25-20mm T-Bolts with plastic washers in the slots on the assembled Passenger side step bar. Rotate the T-Bolts to 90 degree, thread down the M8 Plastic Washers against the step bar (Fig 10).

NOTE: The Plastic Washer is designed to keep the T-Bolt from falling into the bar tube during installation.

iArmor®



(Fig 9) Thread (1) M8 Plastic Washer on each T-Bolt Before Inserting into the bar tube!!!



(Fig 10) T-Bolt with plastic washer in the slot

STEP 7

Attach the Assembled Passenger Side Step Bar onto the Mounting Brackets with (6) M8 Plastic Washers, (6) M8X1.25-20mm T-Bolts, (6) M8 Large Flat Washers, (6) M8 Nylon Lock Nuts, (Fig 11). Do not fully tighten hardware at this time.

STEP 8

Level and adjust the assembled Step Bar properly and tighten all hardware.

Move to the other side of the vehicle. Repeat **Steps 2-7** to install the other side step bar.

NOTE: Passenger Front / Driver Center & Rear Mounting Brackets are Universal.

Attention

Do periodic inspections to the installation to make sure that all hardware is secure and tight.

In order to protect your bars/boards, please use mild soap/non-abrasive products for cleaning only.

(Fig 11) Passenger Side Step Bar Installation

