



Hitch Installation Instruction

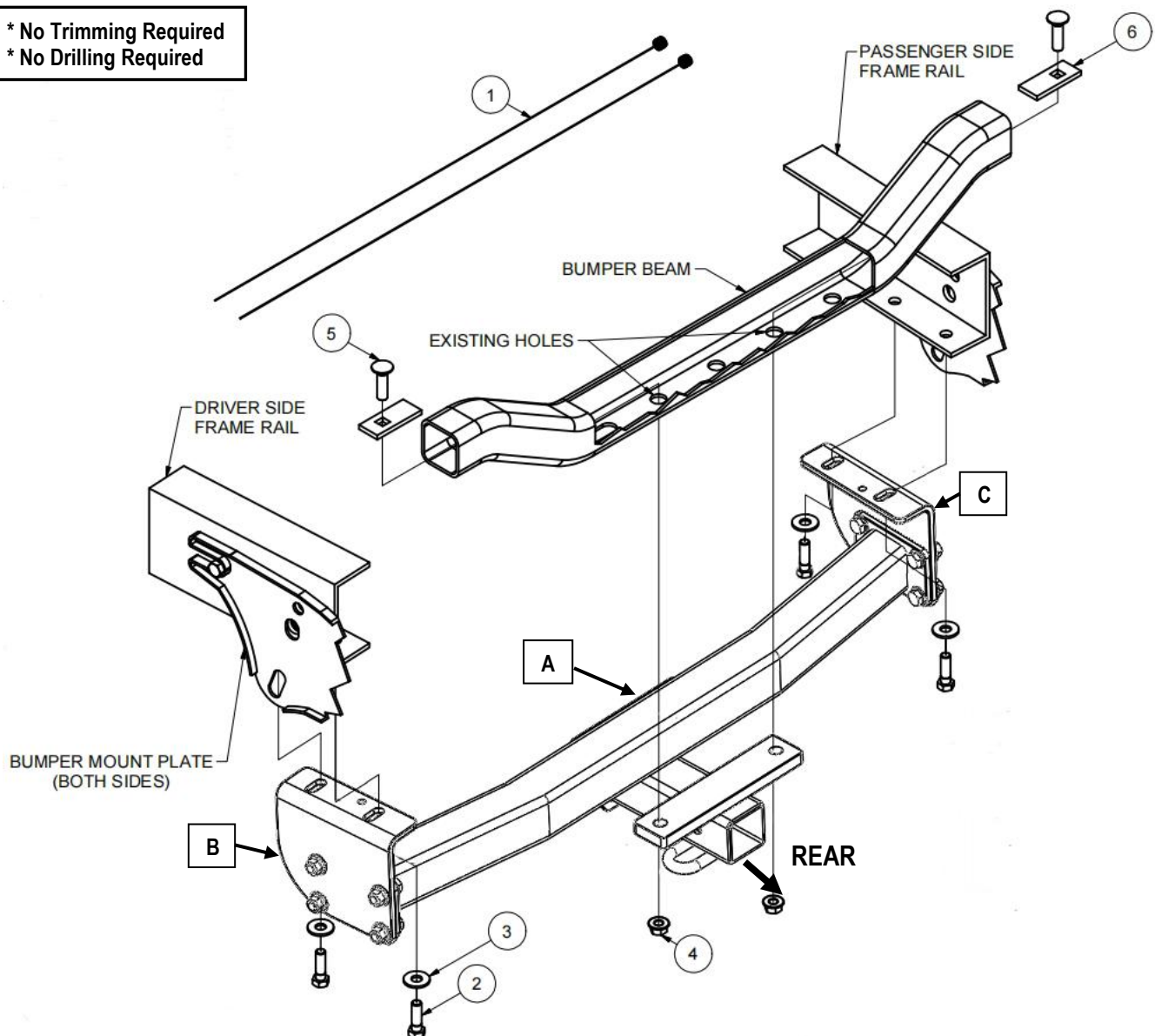
REV.20250901

Part#	HT-X30264	Application	For 2016-2023 TOYOTA TACOMA Excluding factory receiver
-------	-----------	-------------	--

Hardware List	Item	Part Name	QTY	Description	Item	Part Name	QTY	Description
Hitch Parts	A	Hitch Body	1		B/C	Mounting Brackets	2	B-Driver Side C-Passenger Side
HW B (For Hitch Installation)	#1	Fishwires	2	For installing bolts	#4	Hex Flange Nuts	2	M12X1.75
	#2	Hex Bolts	4	M12X1.25-40mm	#5	Carriage Bolts	2	M12 X1.75-45mm
	#3	Conical Washers	4	M12	#6	Spacers	2	SQ. hole spacer
HW A (For Hitch Assembly)	#7	Hex Bolts	8	M12X1.75-35	#9	Hex Flange Nuts	8	M12
	#8	Flat Washers	16	M12				

Gross Load Capacity When Used As A Weight Carrying Hitch: 6000 LBS. Trailer Weight & 900 LBS. Tongue Weight.
Gross Load Capacity When Used As A Weight Distribution Hitch: 8000LBS. Trailer Weight & 900 LBS. Tongue Weight
DO NOT EXCEED VEHICLE MANUFACTURER'S RECOMMENDED TOWING CAPACITY.

- * No Trimming Required
- * No Drilling Required



The instruction here is for your reference only. We strongly recommend the professional installer for best result. We are not responsible for any damage caused by the installation. Thank you for choosing our product!

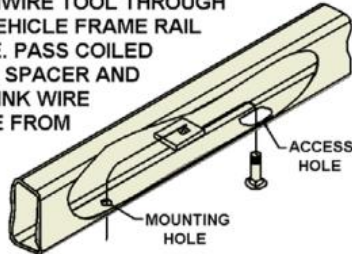


Hitch Installation Instruction

Part#	HT-X30264	Application	For 2016-2023 TOYOTA TACOMA Excluding factory receiver
-------	-----------	-------------	--

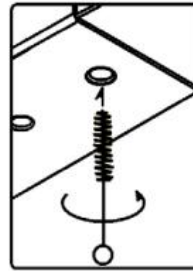
FISHWIRE TECHNIQUE

INSERT COILED END OF FISHWIRE TOOL THROUGH HITCH MOUNTING HOLE IN VEHICLE FRAME RAIL AND OUT THE ACCESS HOLE. PASS COILED END OF FISHWIRE THROUGH SPACER AND THREAD BOLT INTO COIL. KINK WIRE TO KEEP SPACER SEPERATE FROM BOLT AS SHOWN. PULL FISHWIRE, SPACER, AND BOLT THROUGH FRAME AND OUT MOUNTING HOLE. USE FISHWIRE TO GUIDE HITCH DURING MOUNTING AND PREVENT LOSS OF BOLT / SPACER INSIDE FRAME RAIL.



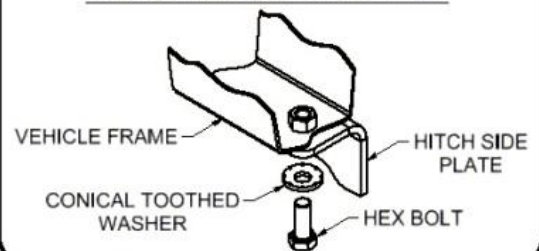
****NOTE: SOME VEHICLES MAY FISHWIRE THROUGH END OF FRAME****

WELDNUT CLEANING



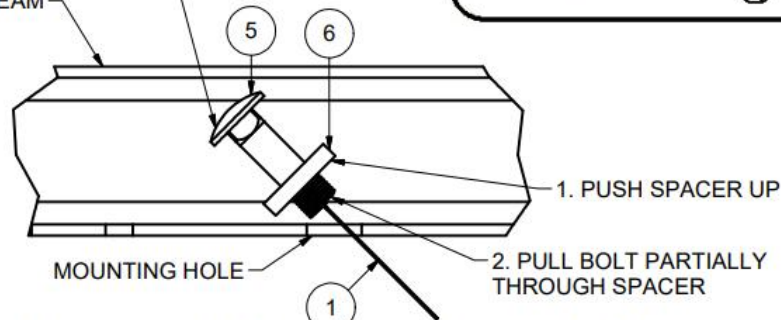
To remove debris from weldnuts in frame, spray lubricant or compressed air into hole. For heavy debris, use a small wire brush. (Be careful not to damage threads).

CONICAL TOOTHED WASHER ORIENTATION DIAGRAM



3. ROTATE BOLT AND SPACER THROUGH MOUNTING HOLE

BUMPER BEAM



BUMPER BEAM FISHWIRE DIAGRAM

Step	Description
1	Assemble Hitch Body (A) and Mounting Brackets (B, C) with (8) M12X1.75-35mm Hex Bolts, (16) M12 Flat Washers, (8) M12 Hex Flange Nuts.(Hardware in "HW A"). Note:Finger tighten only. Do not fully tighten at this time.
2	Fishwire (2) M12 X1.75-45mm Carriage Bolts and (2) Spacers through ends of bumper beam and out mounting holes as shown. (See BUMPER BEAM FISHWIRE DIAGRAM)
3	Raise hitch into position and align (2) existing holes on bumper beam with (2) middle holes of hitch body, install (2) M12X1.75 Hex Flange Nuts on to (2) M12 X1.75-45mm Carriage Bolts. Do not fully tighten at this time.
4	Make sure hitch ends into position between bumper mount plates and align slots in hitch with existing vehicle weldnuts in the frame rails.Install (4) M12X1.25-40mm Hex Bolts and (4) M12 Conical Washers into existing weldnuts, as shown.
5	Tighten all fasteners. Torque M12 Carriage Bolt to 58 lb-ft. Torque other M12 hardware to 86 ft-lbs.
***Periodically Check The Receiver Hitch To Ensure That All Fasteners *** Are Tight & All Structural Components Are Sound.	

The instruction here is for your reference only. We strongly recommend the professional installer for best result. We are not responsible for any damage caused by the installation. Thank you for choosing our product!