



Hitch Installation Instruction

REV.20240601

Part#	HT-X30119	Application	For 2012-2016 Honda CR-V ALL					
-------	-----------	-------------	------------------------------	--	--	--	--	--

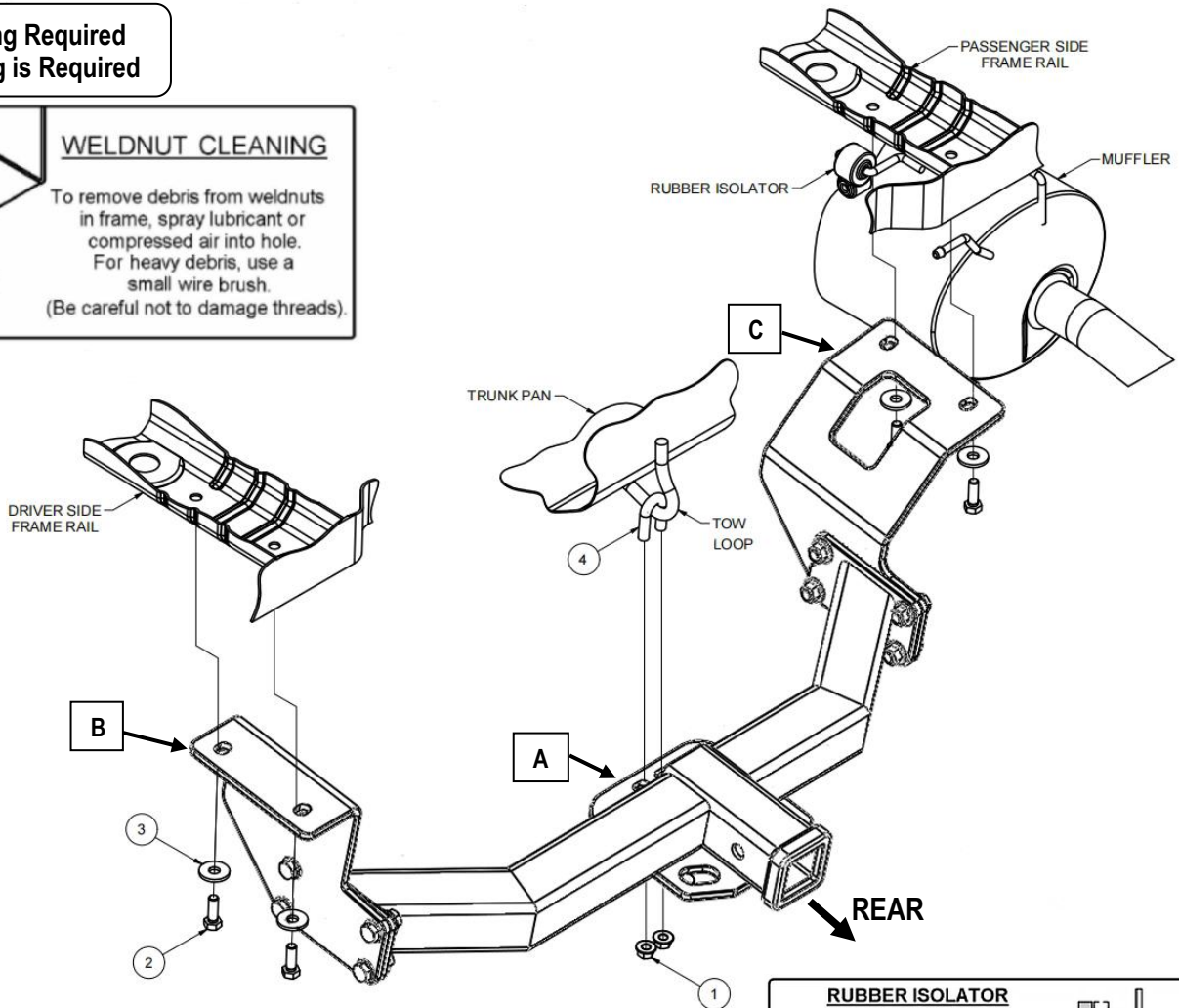
Hardware List	Item	Part Name	QTY	Description	Item	Part Name	QTY	Description
Hitch Parts	A	Hitch Body	1		B/C	Mounting Brackets	2	B-Driver Side C-Passenger Side
	HW B (For Hitch Installation)	1	Flange Nuts	2	M10*1.5	3	Conical Washers	4
2		Hex Bolts	4	M10X1.25-30	4	U-Bolt	1	M10X1.5-60
HW A (For Hitch Assembly)	5	Hex Bolts	8	M12X1.75-35	7	Hex Flange Nuts	8	M12
	6	Flat Washers	16	M12				

Gross Load Capacity When Used As A Weight Carrying Hitch: 3500 LBS. Trailer Weight & 350 LBS. Tongue Weight.
*****DO NOT EXCEED VEHICLE MANUFACTURER'S RECOMMENDED TOWING CAPACITY.*****

**No Drilling Required
Trimming is Required**

WELDNUT CLEANING

To remove debris from weldnuts in frame, spray lubricant or compressed air into hole. For heavy debris, use a small wire brush. (Be careful not to damage threads).



CONICAL TOOTHED WASHER ORIENTATION

Labels: VEHICLE FRAME, HITCH SIDE PLATE, CONICAL TOOTHED WASHER, HEX BOLT.

RUBBER ISOLATOR REMOVAL DIAGRAM

This technique can be used if and Exhaust Hanger Removal Pliers is not available.

Using a 5/8" open end wrench, slide the wrench up to the rubber isolator, cradling the hanger rod as shown. Next place the flat edge of a pry bar between the wrench and the hanger stop or hanger rod. Then simply rotate the pry bar toward the wrench to remove the rubber isolator.

Note: Using a spray lubricant or soapy water on the hanger rod and the rubber isolator helps removal.

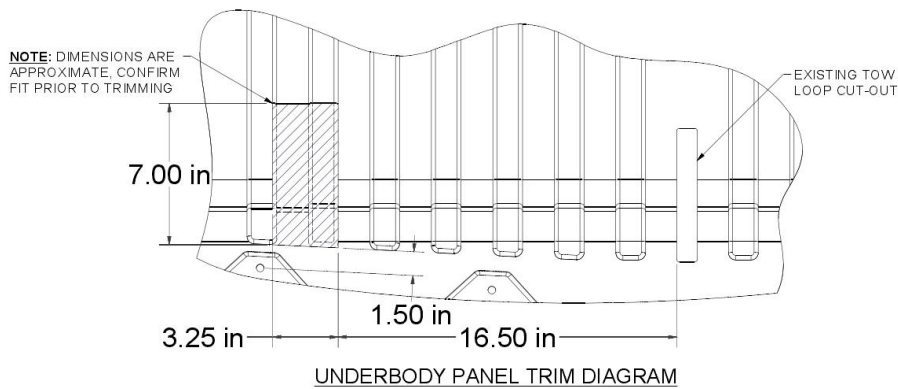
The instruction here is for your reference only. We strongly recommend the professional installer for best result. We are not responsible for any damage caused by the installation. Thank you for choosing our product!



Hitch Installation Instruction

Part#	HT-X30119	Application	For 2012-2016 Honda CR-V ALL
--------------	------------------	--------------------	-------------------------------------

Step	Description
1	Assemble Hitch Body (A) and Mounting Brackets (B, C) with (8) M12X1.75-35mm Hex Bolts, (16) M12 Flat Washers, (8) M12 Hex Flange Nuts.(Hardware in "HW A").
2	Remove (10) fasteners and lower underbody panel.
3	Lower exhaust by removing (2) Rubber isolators from the hangers attached to the exhaust. (See RUBBER ISOLATOR REMOVAL DIAGRAM)
4	Mark and trim underbody panel. Reattach underbody panel using fasteners removed in Step (1). Note: Dimensions are approximate, confirm fit prior to trimming. Use ribs of the underbody panel as cutting guides.(See UNDERBODY PANEL TRIM DIAGRAM)



5	Insert M10 U-bolt through tow hook, as shown.
6	Raise hitch into position and secure using M10 flange nuts to the U-bolt and 10 mm bolts with M10 conical toothed washers to the weldnuts in the frame rails.(See WELDNUT CLEANING DIAGRAM)
7	Torque M10 U-bolt hardware to 32 ft-lbs. Torque other M10 fasteners to 47 ft-lbs.
8	Raise exhaust back into position.

*****Periodically Check The Receiver Hitch To Ensure That All Fasteners ***
Are Tight & All Structural Components Are Sound.**

The instruction here is for your reference only. We strongly recommend the professional installer for best result. We are not responsible for any damage caused by the installation. Thank you for choosing our product!