



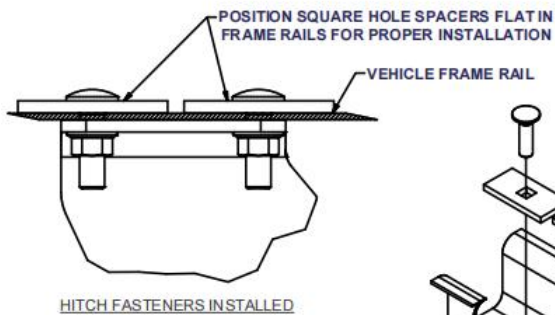
Hitch Installation Instruction

REV.20251001

Part#	HT-X32396	Application	For 2002-2007 Buick Rendezvous All; 2001-2005 Pontiac Aztek All					
Hardware List	Item	Part Name	QTY	Description	Item	Part Name	QTY	Description
Hitch Parts	A	Hitch Body	1		B/C	Mounting Brackets	2	B-Driver Side C-Passenger Side
HW B (For Hitch Installation)	1#	Hex Flange Nuts	2	M10X1.5	5#	Flat Washers	2	M10
	2#	Hex Flange Nuts	4	M12X1.75	6#	Hex Bolts	2	M10X1.5-25
	3#	Carriage Bolts	4	M12X1.75-45	7#	Fishwires	1	
	4#	Spacers	4	Square Hole				
HW A (For Hitch Assembly)	8#	Hex Bolts	4	M12X1.75-40	10#	Flat Washers	16	M12
	9#	Hex Bolts	4	M12X1.75-35	11#	Hex Flange Nuts	8	M12X1.75

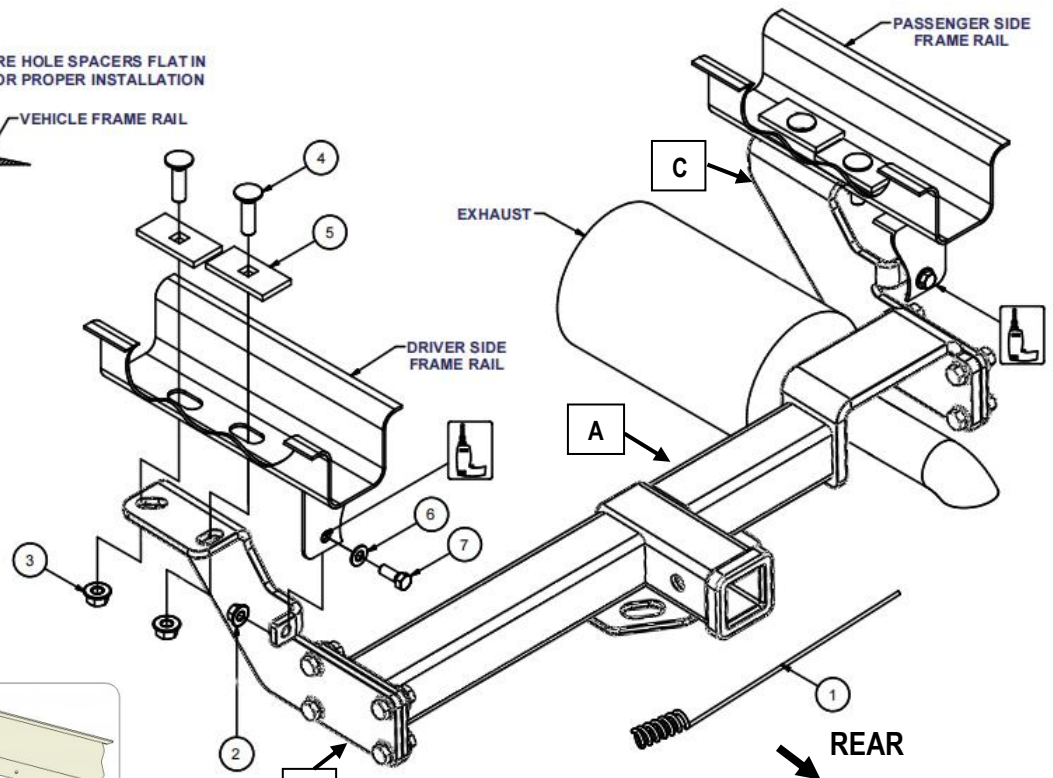
Gross Load Capacity When Used As A Weight Carrying Hitch: 3500 LBS. Trailer Weight & 350 LBS. Tongue Weight.
DO NOT EXCEED VEHICLE MANUFACTURER'S RECOMMENDED TOWING CAPACITY.

- * No Trimming Required
- * Drilling Required



REVERSE PULL FISHWIRE TECHNIQUE

ATTACH FISHWIRE TO CARRIAGE BOLT AND SLIDE SPACER ONTO FISHWIRE. THEN PUSH THE BOLT THRU THE HOLE FOLLOWED BY THE SPACER (AS SHOWN). PULL BOLT BACK INTO POSITION, PROTRUDING FROM THE FRAME.



The instruction here is for your reference only. We strongly recommend the professional installer for best result.
We are not responsible for any damage caused by the installation. Thank you for choosing our product!



Hitch Installation Instruction

REV.20251001

Part#	HT-X32396	Application	For 2002-2007 Buick Rendezvous All; 2001-2005 Pontiac Aztek All
Step	Description		
1	Assemble Hitch Body (A) and Mounting Brackets (B) with (4) M12X1.75-35mm Hex Bolts, (8) M12 Flat Washers, (4) M12 Hex Flange Nuts; Assemble Hitch Body (A) and Mounting Brackets (C) With (4) M12X1.75-40mm Hex Bolts, (8) M12 Flat Washers, (4) M12 Hex Flange Nuts.(Hardware in “HW A”). Note:Finger tighten only. Do not fully tighten at this time.		
2	Remove tow hooks if present. If tow hooks are not present remove all existing hardware from the hitch mounting location.		
3	For ease of installation you may choose to lower the exhaust and spare tire.		
4	Use the slots in the frame to reverse fishwire M12 carriage bolts and spacers as shown. (Enlarge access hole as needed) *NOTE: To properly torque fasteners, spacers must be flat against the bottom of the frame rails as shown.		
5	Raise the hitch into position and secure with M12 flange nuts as shown.		
6	With hitch in position. Use a 7/16" drill bit and drill holes for M10 hex bolts.		
7	Torque M12 Carriage bolts to 58 ft-lb and other M12 fasteners to 86 lb.-ft. Torque M10 hardware to 47 ft-lbs.		
8	Re-install exhaust and spare tire removed in step 3.		
***Periodically Check The Receiver Hitch To Ensure That All Fasteners *** Are Tight & All Structural Components Are Sound.			

The instruction here is for your reference only. We strongly recommend the professional installer for best result.
We are not responsible for any damage caused by the installation. Thank you for choosing our product!