



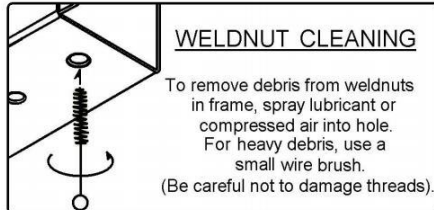
Hitch Installation Instruction

REV.20250101

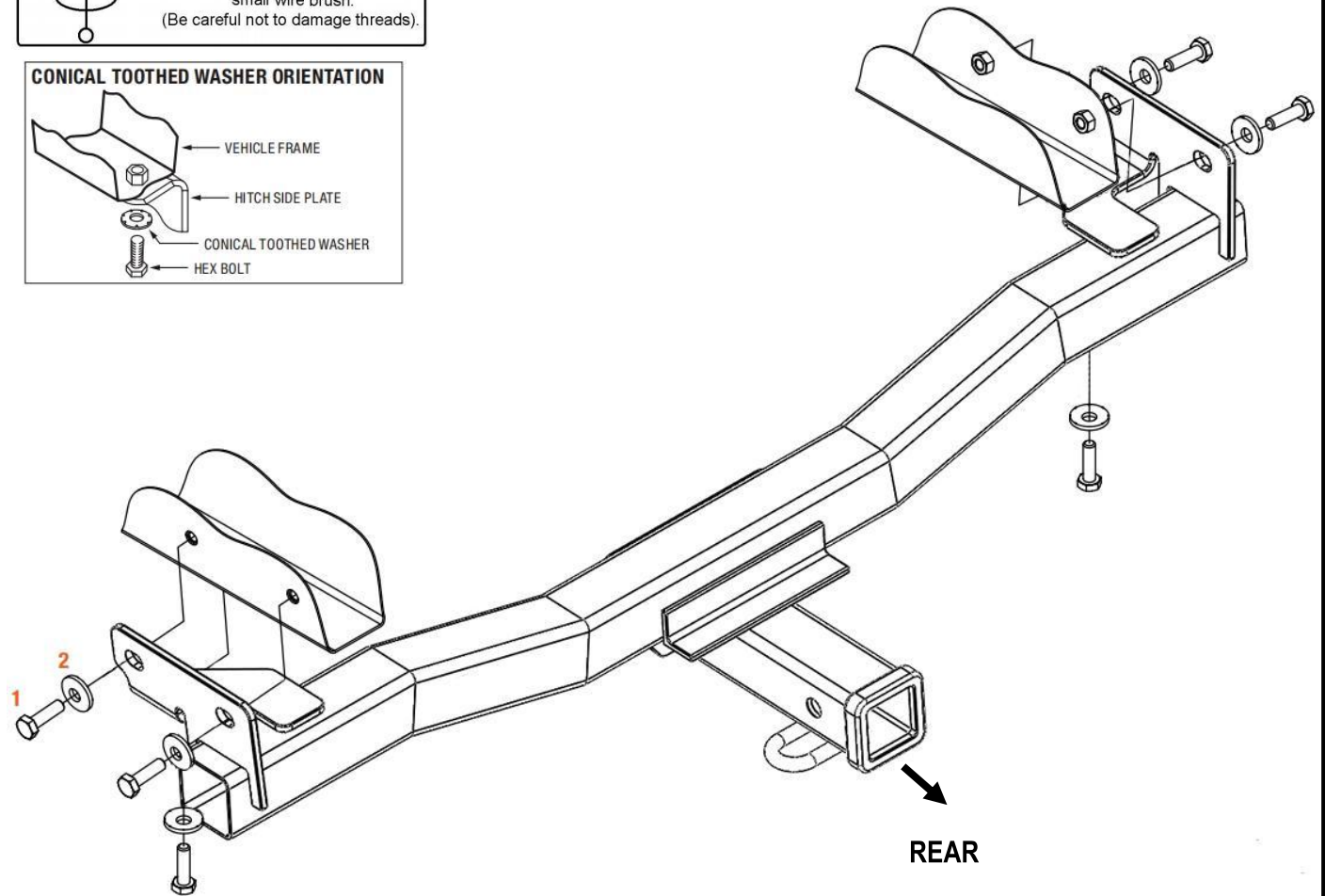
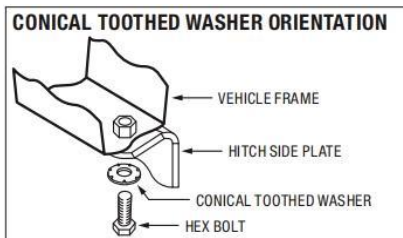
Part#	HT-R30485	Application	For 2022-2024 Hyundai Tucson All;2023- 2025 Kia Sportage All
-------	-----------	-------------	--

Hardware List	Item	Part Name	QTY	Description	Item	Part Name	QTY	Description
	1#	Hex Bolts	6	M10X1.25-35	2#	Conical Washers	6	M10

Gross Load Capacity When Used As A Weight Carrying Hitch:3500 LBS. Trailer Weight & 525 LBS. Tongue Weight.
*****DO NOT EXCEED VEHICLE MANUFACTURER'S RECOMMENDED TOWING CAPACITY.*****



- * No Trimming Required
- * No Drilling Required







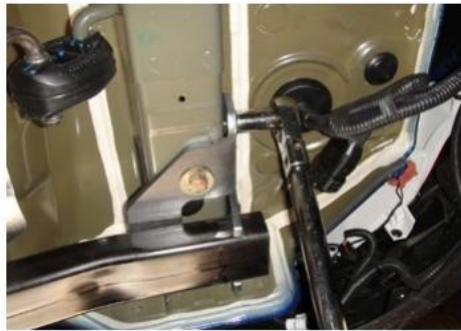
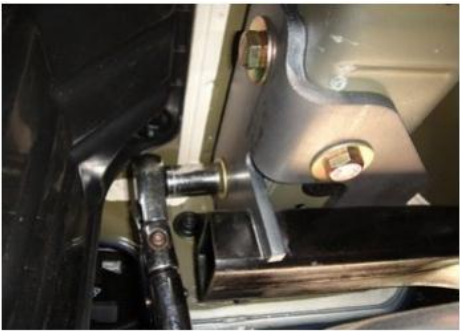
The instruction here is for your reference only. We strongly recommend the professional installer for best result. We are not responsible for any damage caused by the installation. Thank you for choosing our product!



Hitch Installation Instruction

REV.20250101

Part#	HT-R30485	Application	For 2022-2024 Hyundai Tucson All;2023- 2025 Kia Sportage All
--------------	-----------	--------------------	--

Step	Description
1	Remove the underbody panel. Use a flathead screwdriver to remove the four push fasteners. Next, use a 14mm socket to loosen the three nuts.
 	
2	Raise the hitch into position and loosely secure with six M10 bolts (#1) and six conical-toothed washers (#2). Note: Lower exhaust if needed to ease installation.
 	
3	Tighten all M10 bolts to 48 ft-lbs.
 	
***Periodically Check The Receiver Hitch To Ensure That All Fasteners *** Are Tight & All Structural Components Are Sound.	

The instruction here is for your reference only. We strongly recommend the professional installer for best result. We are not responsible for any damage caused by the installation. Thank you for choosing our product!