

# iBoard®



Scan for  
Installation Video

## iBoard® by APS

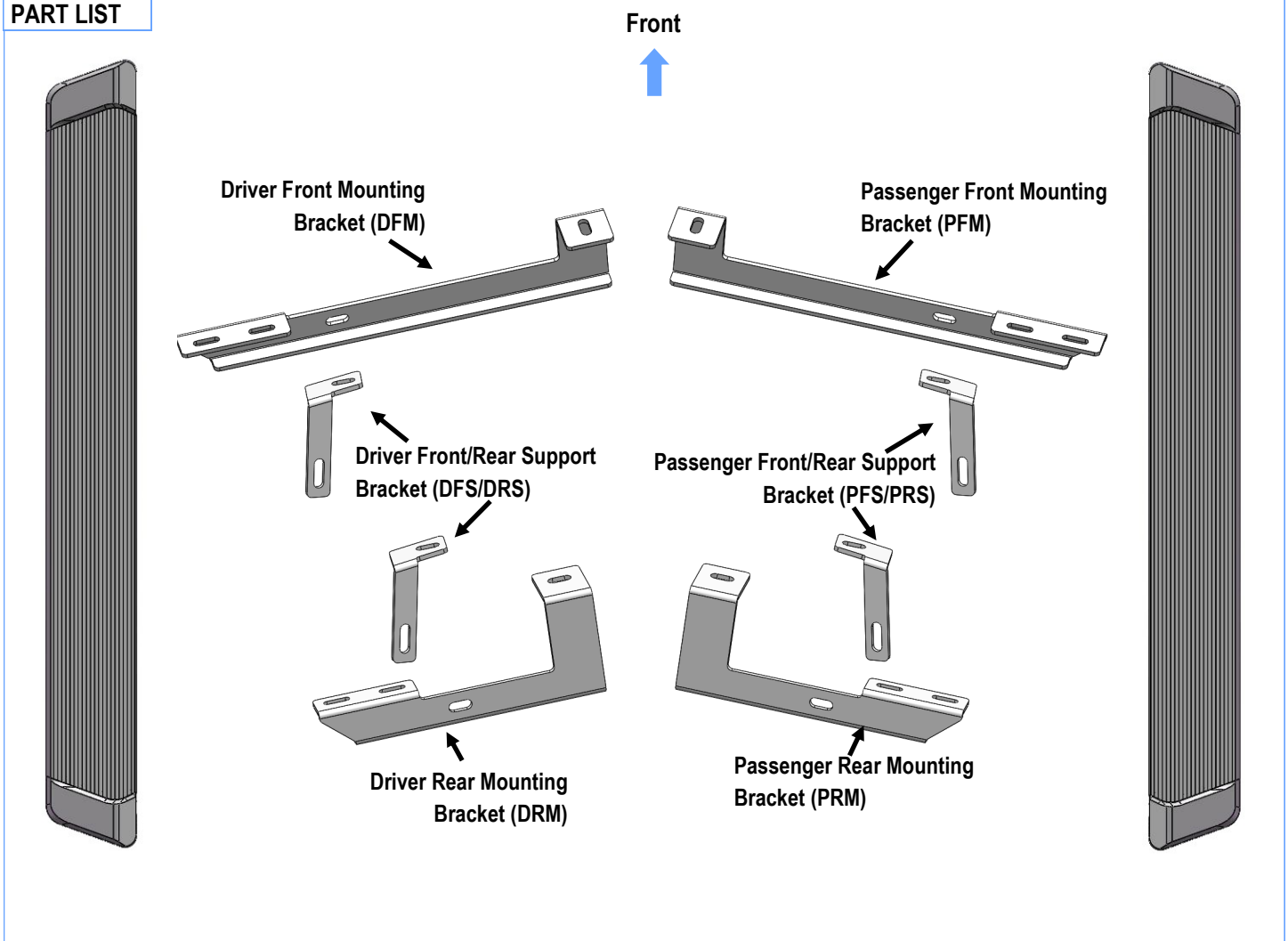
PART#: IB-R935

READ INSTRUCTIONS CAREFULLY BEFORE STARTING INSTALLATION. REMOVE CONTENTS FROM BOX AND VERIFY ALL PARTS ARE PRESENT. ASSISTANCE IS RECOMMENDED.

\*ROCKER PANEL MOUNT  
\*NO DRILLING REQUIRED

Fastener Size	Tightening Torque (ft-lbs)	Required
6mm	6-7	√
8mm	16-18	X
10mm	31-32	√
12mm	56-58	X
14mm	92-94	X

### PART LIST

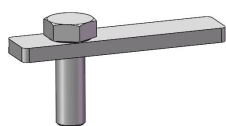


Customer Support: [info@iboardauto.com](mailto:info@iboardauto.com)

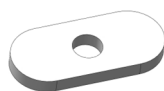


### Hardware Package A (For Bracket Installation)

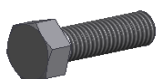
Item	QTY	Description	Item	QTY	Description
1#	2	M10X45 Bolt Plates	5#	2	M10 Large Flat Washers
2#	6	M10X1.5 Nut Plates	6#	14	M10 Flat Washers
3#	8	M10X1.5-30mm Hex Bolts	7#	12	M10 Lock Washers
4#	2	M10X1.5-20mm Hex Bolts	8#	10	M10 Hex Nuts



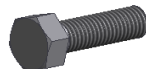
1#



2#



3#



4#



5#



6#



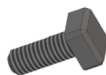
7#



8#

### Hardware Package B (For Step Bar Installation)

Item	QTY	Description	Item	QTY	Description
1#	8	M6X1-20mm Square Head Bolts	3#	8	M6 Nylon Lock Nuts
2#	8	M6 Large Flat Washers			



1#



2#

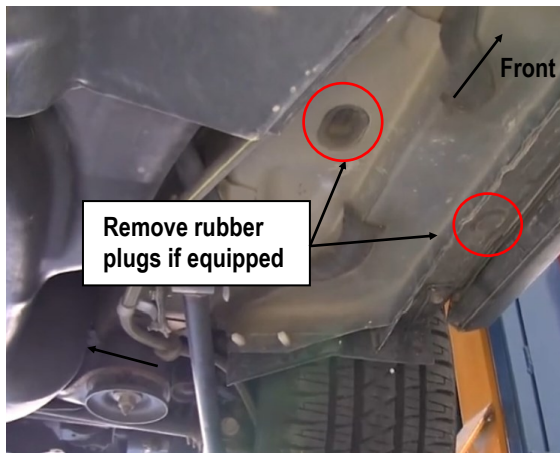


3#

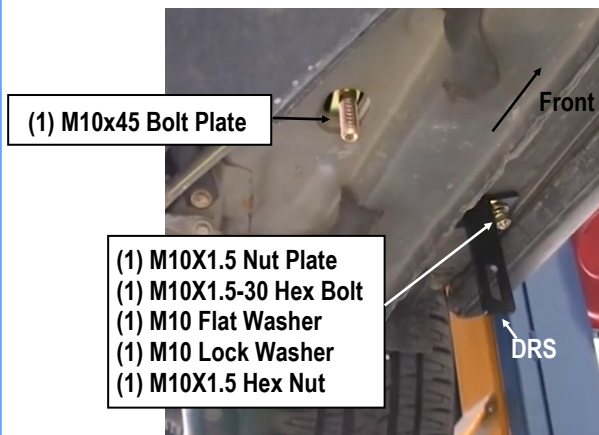


## STEP 1

Start installation from the driver side rear of the vehicle. Remove rubber plugs if equipped, ( **Fig 1** ). Thread (1) M10X1.5-30mm Hex Bolt through (1) M10X1.5 Nut Plate. Insert assembled Bolt-Nut plate into the small outer hole, attach (1) Driver Rear Support Bracket (**DFS/DRS**) to Bolt-Nut plate using (1) M10 Flat Washer, (1) M10 Lock Washer, (1) M10X1.5 Hex Nut, ( **Fig 2** ). Do not fully tighten hardware at this time.



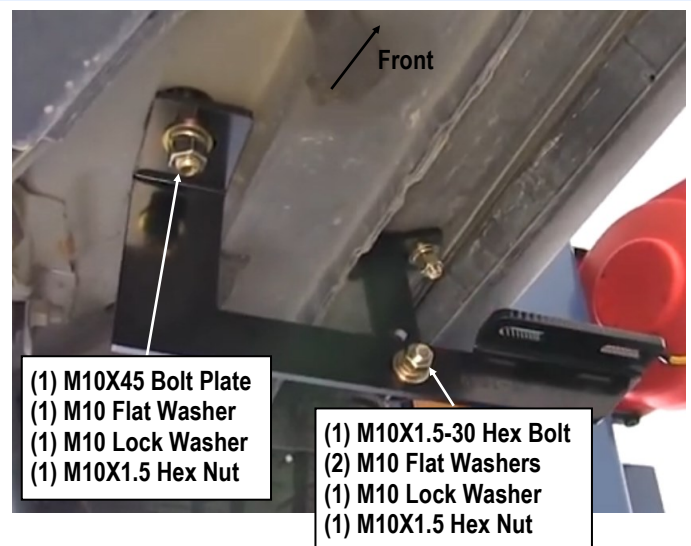
(Fig 1) Driver Rear Mounting Location



(Fig 2) Driver Rear Support Bracket Installed

## STEP 2

Insert (1) M10X45 Bolt Plate into the larger oval hole as shown, ( **Fig 2** ). Install Driver Rear Mounting Bracket (**DRM**) to the vehicle using (1) M10 Flat Washer, (1) M10 Lock Washer, (1) M10X1.5 Hex Nut, ( **Fig 3** ). Connect Driver Front Support Bracket (**DFS/DRS**) to **DRM** with (1) M10X1.5-30mm Hex Bolt, (2) M10 Flat Washers, (1) M10 Lock Washer, (1) M10X1.5 Hex Nut, ( **Fig 3** ). Do not fully tighten hardware at this time.

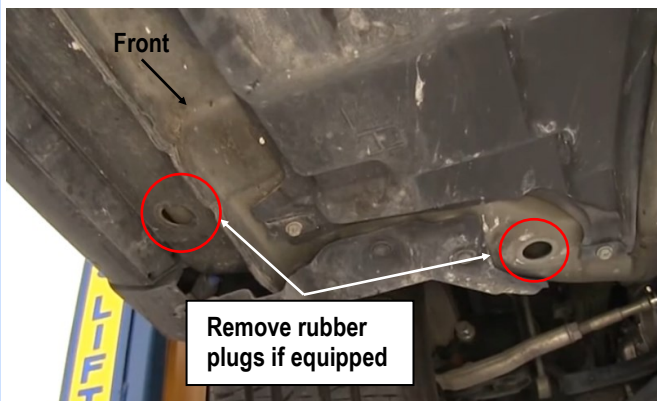


(Fig 3) Driver Rear Mounting Brackets Installed

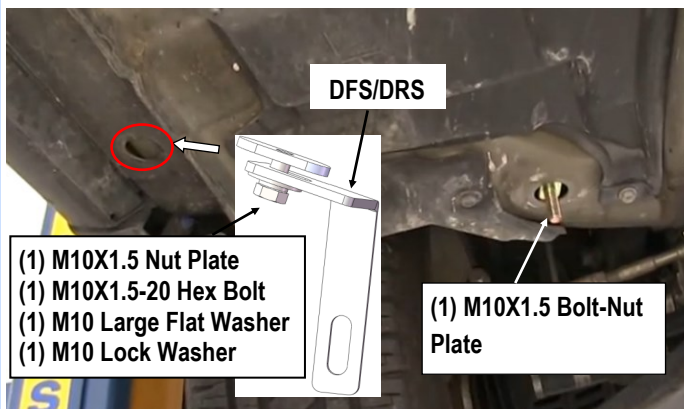
## STEP 3

Move to Driver Front Mounting Location, ( **Fig 4** ). Thread (1) M10X1.5-30mm Hex Bolt through (1) M10X1.5 Nut Plate. Insert assembled Bolt-Nut plate into the inner hole.

Install (1) Driver Front Support Bracket (**DFS/DRS**) with (1) M10X1.5-20mm Hex Bolt, (1) M10 Large Flat Washer, (1) M10 Lock Washer, and (1) M10X1.5 Nut Plate. Insert the assembled **DFS** into the outer hole, ( **Fig 5** ). Do not fully tighten hardware at this time.



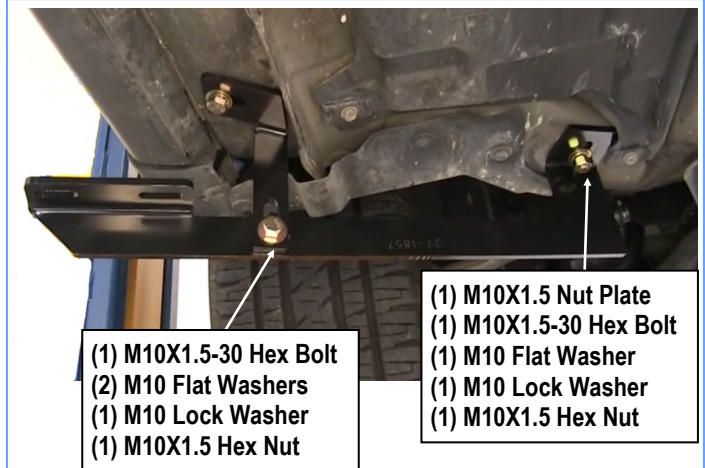
(Fig 4) Driver Front Mounting Location



(Fig 5) Driver Front Support Bracket Installation

## STEP 4

Install Driver Front Mounting Bracket (DFM) to the installed Nut-Bolt plate using (1) M10 Flat Washer, (1) M10 Lock Washer, (1) M10X1.5 Hex Nut, (Fig 6). Connect Driver Front Support Bracket (DFS/DRS) to DRM with (1) M10X1.5-30mm Hex Bolt, (2) M10 Flat Washers, (1) M10 Lock Washer, (1) M10X1.5 Hex Nut, (Fig 6). Do not fully tighten hardware at this time.



(Fig 6) Driver Side Front Mounting Brackets Installed

## STEP 5

Once all (2) mounting brackets are installed. Select a Running Board. Slip (2) M6X1-20mm Square Head Bolts into each bottom channel (Fig 7). Carefully position the Running Board onto the (2) Mounting Brackets. Attach the Running Board to each Mounting Bracket with (2) M6X1-20mm Square Head Bolts, (2) M6 Large Flat Washers and (2) M6 Nylon Lock Nuts (Fig 8). Do not fully tighten at this time.

**IMPORTANT:** Do not slide the Running Board on the Brackets or the bottom surface of the board will be damaged.

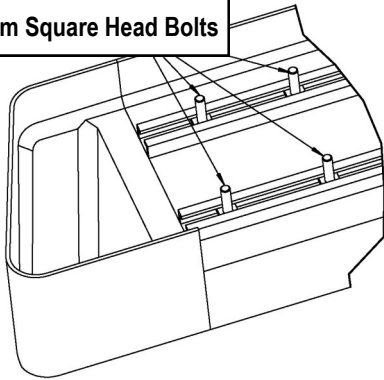
## STEP 6

Level and adjust the Running Board and fully tighten all hardware.

**Important:** Please follow the recommended Tightening Torques shown in the table on page 1. Don't over tighten, or the nuts/bolts will be damaged.

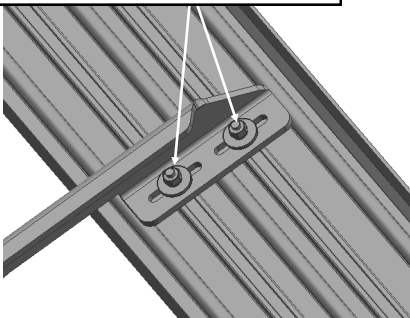


M6X1-20mm Square Head Bolts



(Fig 7) Slip M6X1-20mm Square Head Bolts Into The Bottom Channels

(2) M6X1-20mm Square Head Bolts  
(2) M6 Large Flat Washers  
(2) M6 Nylon Lock Nuts



(Fig 8) Running Board Installed Onto Mounting Bracket

## STEP 6

Repeat **Steps 1-5** for the other side Running Board installation.  
The installation is completed.

### Attention

Do periodic inspections to the installation to make sure that all hardware is secure and tight.

In order to protect your bars/boards, please use mild soap/non-abrasive products for cleaning only.