

iBoard®

iBoard® by APS

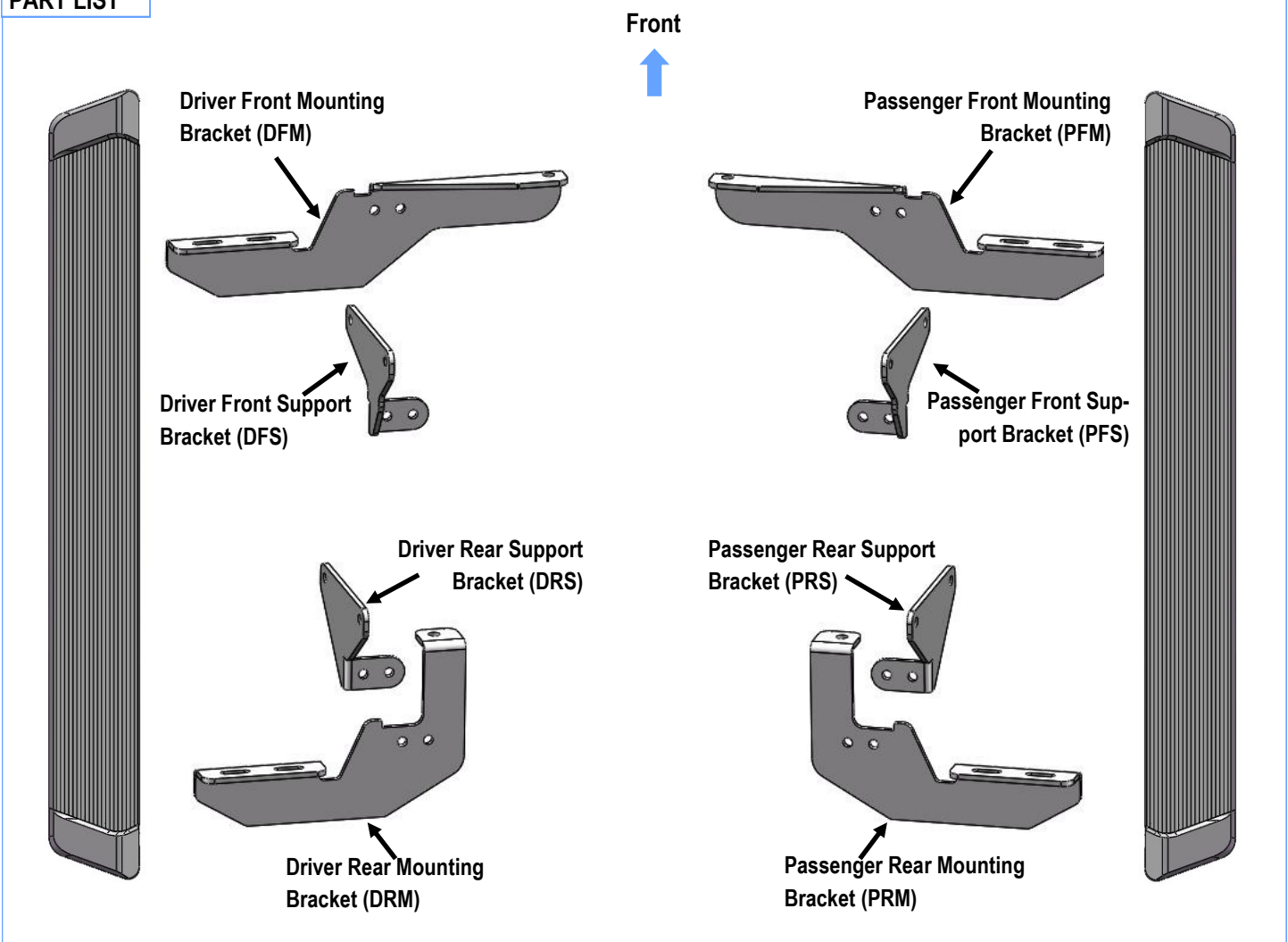
PART#: IB-R964A_B

READ INSTRUCTIONS CAREFULLY BEFORE STARTING INSTALLATION. REMOVE CONTENTS FROM BOX AND VERIFY ALL PARTS ARE PRESENT. ASSISTANCE IS RECOMMENDED.

*ROCKER PANEL MOUNT
*DRILLING IS REQUIRED

Fastener Size	Tightening Torque (ft-lbs)
6mm	6-7
8mm	16-18
10mm	31-32
12mm	56-58
14mm	92-94

PART LIST



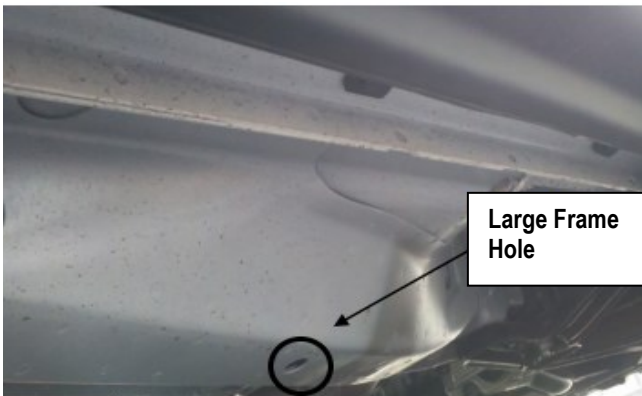
Customer Support: info@iboardauto.com

iBoard®



STEP 1

Start installation from the driver side front of the vehicle. Install M10 J-Bolt in the large hole in the frame, (**Figs 1 & 2**).



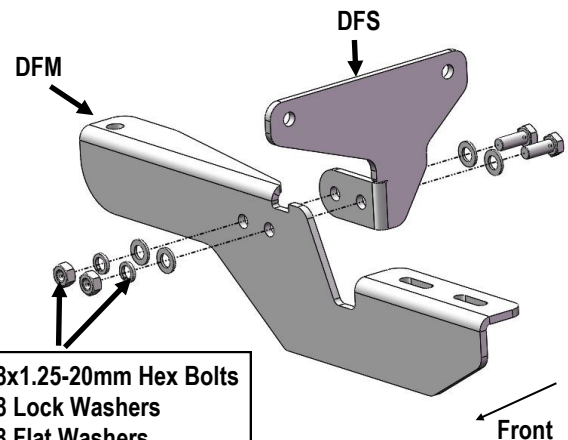
(Fig 1) Driver Side Front Mounting Location



(Fig 2) Install M10 J-Bolt
(on Driver Side Front Mounting Location)

STEP 2

Assemble Driver Front Mounting Bracket (**DFM**) and Driver Front Support Bracket (**DFS**) with (2) M8X1.25-20mm Hex Bolts, (4) M8 Flat Washers, (2) M8 Lock Washer and (2) M8 Hex Nut, (**Fig 3**). Do not fully tighten at this time.



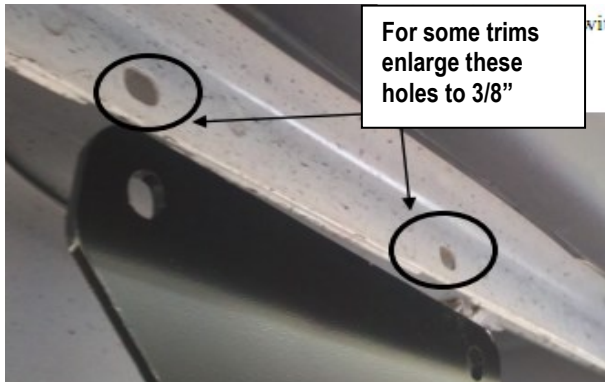
(Fig 3) Driver Front Mounting Bracket Assembly

STEP 3

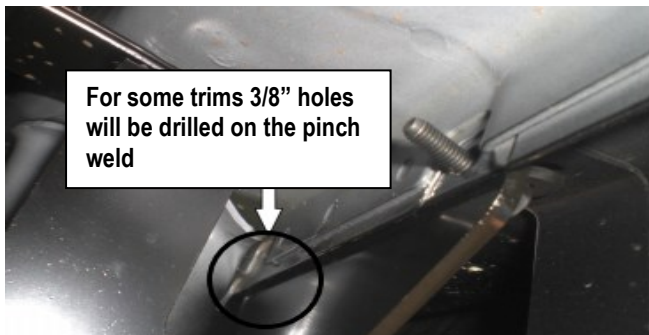
Drill (2) 3/8" holes in the pinch weld, (**Fig 4**).

Note: Some trims just requires to enlarge the holes to 3/8", (**Fig 5**).

iBoard®



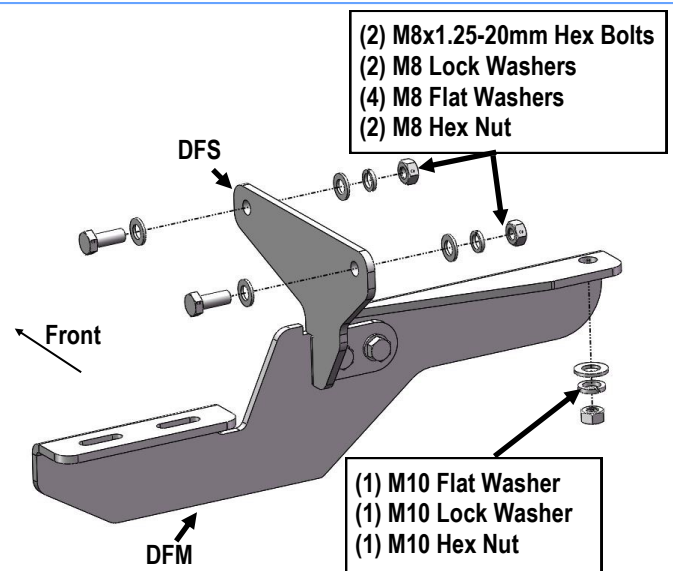
(Fig 4) Enlarge holes to 3/8"



(Fig 5) Drill Holes on Pinch Weld

STEP 4

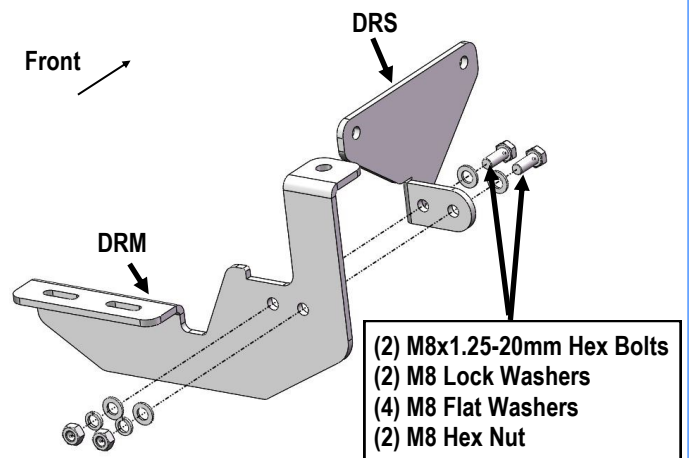
Install Driver Front Mounting Bracket to the M10 J-Bolt using (1) M10 Flat Washer, (1) M10 Lock Washer and (1) M10 Hex Nut. Secure the Driver Front Support Bracket to the outside of the pinch weld using (2) M8X1.25-20mm Hex Bolts, (4) M8 Flat Washers, (2) M8 Lock Washer and (2) M8 Hex Nut, (Fig 6). Do not fully tighten at this time.



(Fig 6) Driver Front Mounting Bracket Installed

STEP 5

Move along the side panel to the driver side rear mounting location, (Fig 3). Repeat step 2 for Driver Rear Mounting Bracket (DRM) and Driver Rear Support Bracket (DRS) assembly, (Fig 7).



(Fig 7) Driver Side Rear Mounting Bracket Assembly

iBoard®

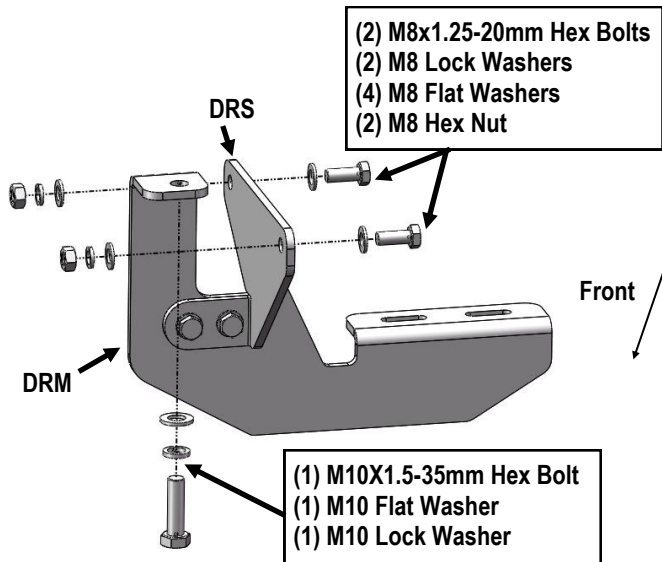
STEP 6

Remove the M10 fuel tank strap bolt and install the Driver Rear Mounting Bracket (**DRM**) with (1) M10X1.5-35mm Hex Bolt, (1) M10 Flat Washer and (1) M10 Lock Washer, (**Fig 8**). Secure the Driver Rear Support Bracket (**DRS**) to the outside of the pinch weld by using (2) M8X1.25-20mm Hex Bolts, (4) M8 Flat Washers, (2) M8 Lock Washers and (2) M8 Hex Nuts, (**Fig 9**). Do not fully tighten at this time.

(1) M10X1.5-35mm Hex Bolt
(1) M10 Flat Washer
(1) M10 Lock Washer



(Fig 8) Driver Rear Mounting Bracket Installed



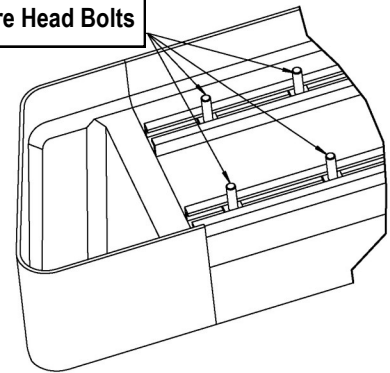
(Fig 9) Driver Side Rear Brackets Installed

STEP 7

Select a Running Board. Slip (2) M6x1-20mm Square Head Bolts into each bottom channel (**Fig 10**). Carefully position the Running Board onto the (2) Mounting Brackets.

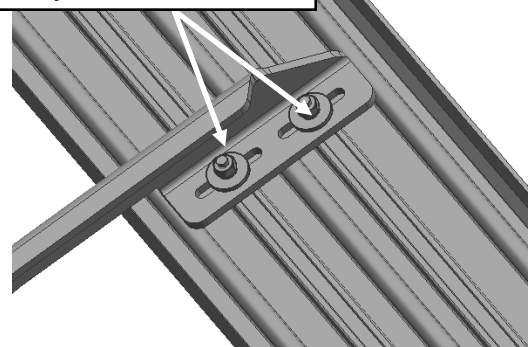
IMPORTANT: Do not slide the Running Board on the Brackets or the bottom surface of the board will be damaged. Attach the Running Board to each Mounting Bracket with (2) M6x1-20mm Square Head Bolts, (2) M6 Large Flat Washers and (2) M6 X1 Nylon Lock Nuts (**Fig 11**). Do not fully tighten at this time.

M6X1-20mm Square Head Bolts



(Fig 10) Slip M6X1-20mm Square Head Bolts Into The Bottom Channels

(2) M6X1-20mm Square Head Bolts
(2) M6 Large Flat Washers
(2) M6X1 Nylon Lock Nuts



(Fig 11) Running Board Installed Onto Mounting Bracket

iBoard®

STEP 8

Level and adjust the Running Board and fully tighten all hardware. **Important:** Please follow the recommended Tightening Torques shown in the table on page 1. Don't over tighten, or the nuts/bolts will be damaged.

STEP 9

Repeat **Steps 1-8** for the other side Running Board installation. The installation is completed (**Fig 12**).



(Fig 12) Installation Completed

Attention

Do periodic inspections to the installation to make sure that all hardware is secure and tight.

In order to protect your bars/boards, please use only mild soap/non-abrasive products for cleaning.