

iBoard®

iBoard® by APS

PART#: IB-115A-B

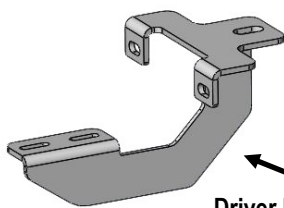
READ INSTRUCTIONS CAREFULLY BEFORE
STARTING INSTALLATION. REMOVE CONTENTS
FROM BOX AND VERIFY ALL PARTS ARE PRE-
SENT. ASSISTANCE IS RECOMMENDED.

*ROCKER PANEL MOUNT
*NO DRILLING REQUIRED

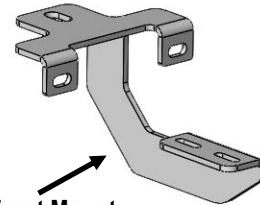
Fastener Size	Tightening Torque (ft-lbs)
6mm	6-7
8mm	16-18
10mm	31-32
12mm	56-58
14mm	92-94

PART LIST

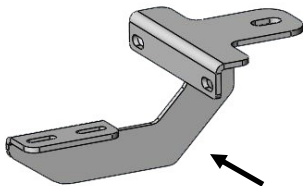
Front
↑



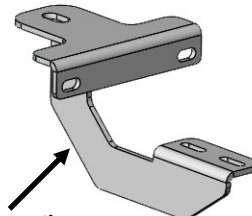
Driver Front Mounting
Bracket (DFM/PFM)



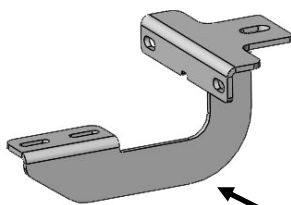
Passenger Front Mount-
ing Bracket (DFM/PFM)



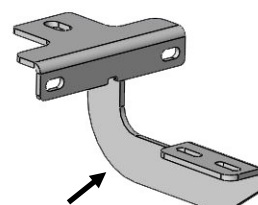
Driver Center Mounting
Bracket (DCM/PCM)



Passenger Center Mounting
Bracket (DCM/PCM)



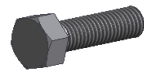
Driver Rear Mounting
Bracket (DRM/PRM)



Passenger Rear Mounting
Bracket (DRM/PRM)

Customer Support: info@iboardauto.com

iBoard®



X6

M8X1.25-35mm Hex Bolt



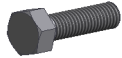
X6

M8 Large Flat Washer



X6

M8 Lock Washer



X12

M6X1-25mm Hex Bolt



X12

M6X1-20mm Square Head Bolt



X36

M6 Large Flat Washer

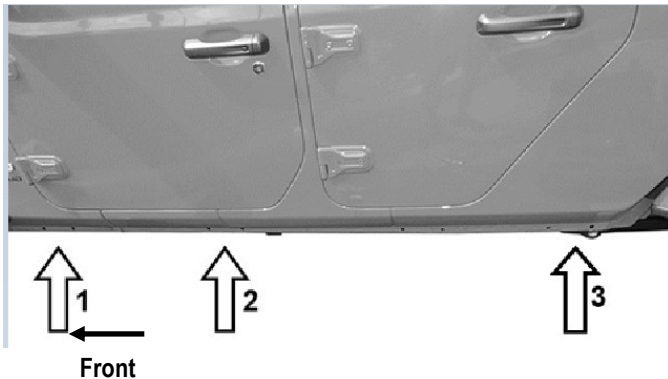


X24

M6X1 Nylon Lock Nut

STEP 1

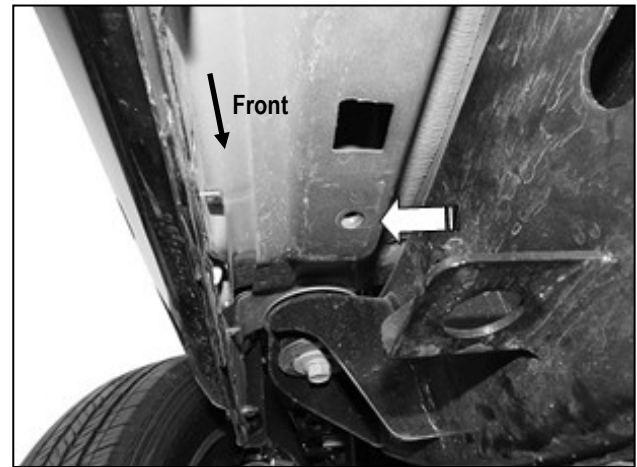
Start the installation under the driver side of the vehicle. Locate (3) mounting points on the vehicle, **(Fig 1)**. Find the threaded insert located in between the first pair of holes along the pinch weld, **(Fig 2)**.



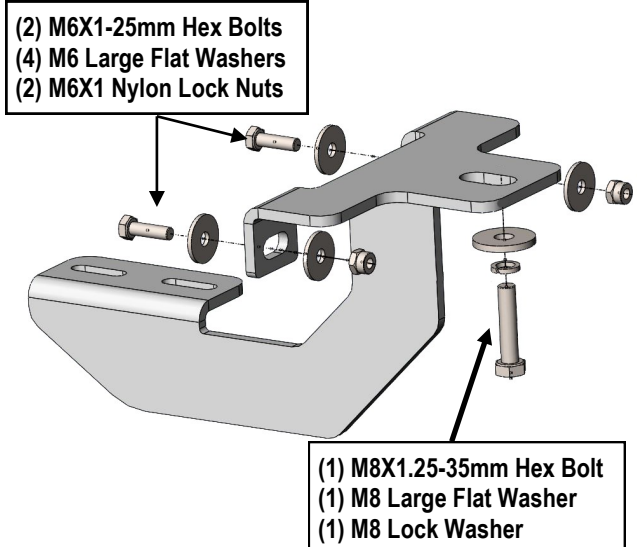
(Fig 1) Driver Side (3) Mounting Locations On The Vehicle

STEP 2

Start from the driver side front of the vehicle, **(Fig 2)**. Attach the Driver Front Mounting Bracket **(DFM/PFM)** to the vehicle with: (1) M8X1.25-35mm Hex Bolt, (1) M8 Lock Washer, (1) M8 Large Flat Washer, (2) M6 Nylon Lock Nuts, (4) M6 Large Flat Washers and (2) M6X1-25mm Hex Bolts, **(Fig 3)**. Do not fully tighten hardware at this time.



(Fig 2) Driver Side Front Mounting Location



(Fig 3) Driver Front Mounting Bracket (DFM/PFM) Installation

iBoard®

STEP 3

Repeat **STEP 2** to install Driver Center & Rear Mounting Brackets. Do not fully tighten hardware at this time.

STEP 4

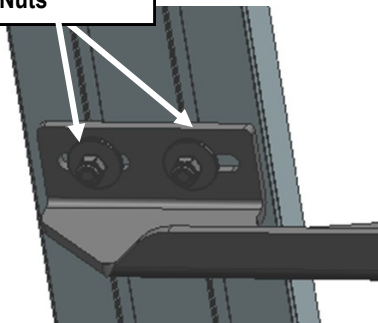
Select a Running Board. Slip (3) M6x1-20mm Square Head Bolts into each bottom channel (**Fig 4**). Carefully position the Running Board onto the (3) Mounting Brackets.

IMPORTANT: Do not slide the Running Board on the Brackets or the bottom surface of the board will be damaged. Attach the Running Board to each Mounting Brackets with (2) M6x1-20mm Square Head Bolts, (2) M6 Large Flat Washers and (2) M6 X1 Nylon Lock Nuts (**Fig 5**). Do not fully tighten hardware at this time.



(Fig 4) Slip M6X1-20mm Square Head Bolts Into The Bottom Channels

(2) M6X1-20mm Square Head Bolts
(2) M6 Large Flat Washers
(2) M6X1 Nylon Lock Nuts



(Fig 5) Running Board Installed Onto Mounting Bracket

STEP 5

Level and adjust the Running Board and fully tighten all hardware.

STEP 6

Repeat **Steps 1-5** for the other side Running Board installation. The installation is completed (**Fig 6**).



(Fig 6) Installation Completed

Attention

Do periodic inspections to the installation to make sure that all hardware is secure and tight.

In order to protect your bars/boards, please use only mild soap/non-abrasive products for cleaning.