

iBoard®

iBoard® by APS

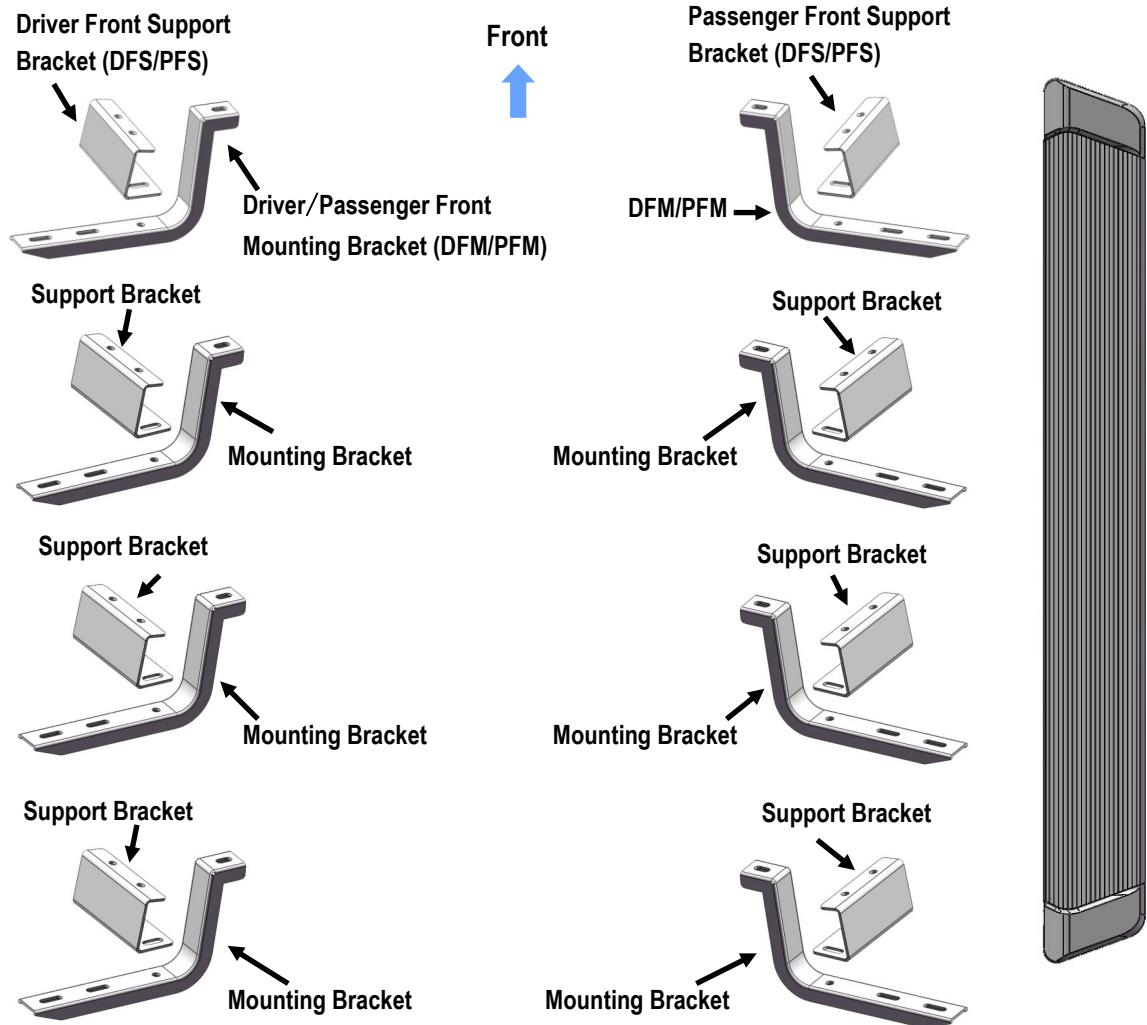
PART#: IB-R922A_B

READ INSTRUCTIONS CAREFULLY BEFORE STARTING INSTALLATION. REMOVE CONTENTS FROM BOX AND VERIFY ALL PARTS ARE PRESENT. ASSISTANCE IS RECOMMENDED.

*ROCKER PANEL MOUNT
*DRILLING IS REQUIRED

Fastener Size	Tightening Torque (ft-lbs)
6mm	6-7
8mm	16-18
10mm	31-32
12mm	56-58
14mm	92-94

PART LIST



Customer Support: info@iboardauto.com

iBoard®



X6

M8X1.25-
25mm Hex Bolt



X24

M8X1.25-
20mm Hex Bolt



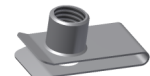
X54

M8 Flat Washer



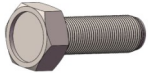
X24

M8 Nylon
Lock Nut



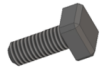
X6

M8 Clip Nut



X2

ST6.3-25mm Hex Self
Tapping Screw



X16

M6X1-20mm
Square Head Bolt



X16

M6 Large Flat
Washer

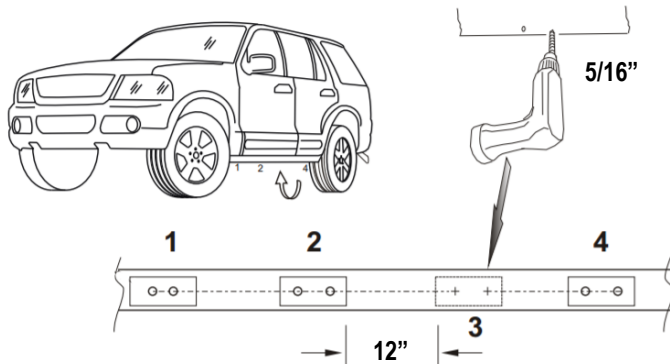


X16

M6X1 Nylon
Lock Nut

STEP 1

Start installation at the driver side of the vehicle, Remove splash guard from underside of vehicle. Drill 5/16" holes on the 3rd mounting location, (Fig 1).



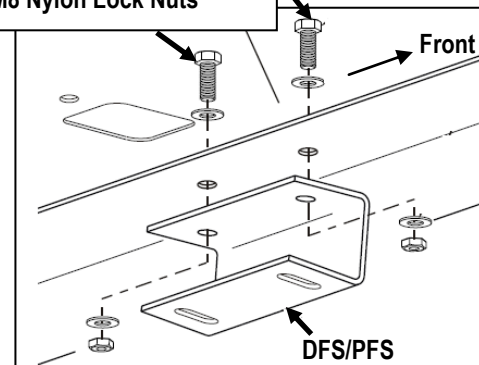
(Fig 1) Driver Side Mounting Locations

STEP 2

Attach the Driver Front Support Bracket (DFS/PFS) to the 1st Mounting Location with (2) M8X1.25-20mm Hex Bolts, (4) M8 Flat Washers and (2) M8 Nylon Lock Nuts, (Fig 1). Don't fully tighten the hardware at this time.

Note: The (2) Front Support Brackets are different with (6) Center and Rear Support Brackets.

(2) M8X1.25-20mm Hex Bolts
(4) M8 Flat Washers
(2) M8 Nylon Lock Nuts



(Fig 2) Driver Front Support Bracket Installation

STEP 3

Select (1) M8 Clip Nut. Line up the Clip Nut with the round hole beside the support bracket, (Fig 3).

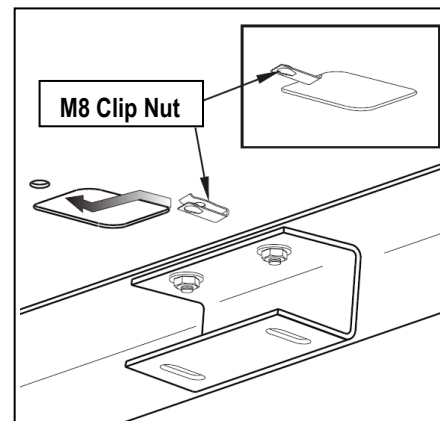
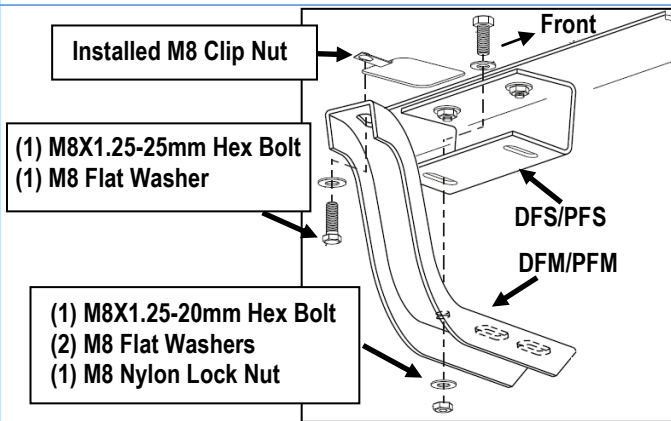


Fig 3

iBoard®

STEP 4

Attach the upper mounting hole of the Driver Front Mounting Bracket (DFM/PFM) to the installed M8 Clip Nut and mount the lower hole to the installed Driver Front Support Bracket with (2) M8X1.25-25mm Hex Bolts, (3) M8 Flat Washers, (1) M8 Nylon Lock Nut (Fig 4). Don't fully tighten hardware at this time.



(Fig 4) Driver Front Mounting Bracket Installation

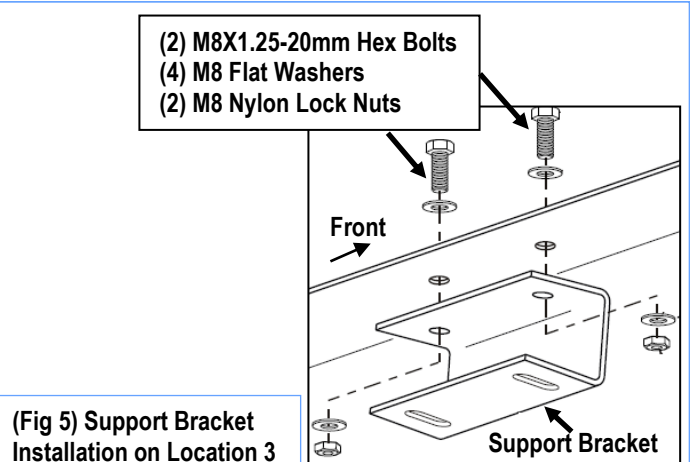
STEP 5

Move to the **Mounting locations 2 & 4**. Repeat **Steps 2-4** to install Support Brackets and Mounting Brackets. Do not fully tighten at this time.

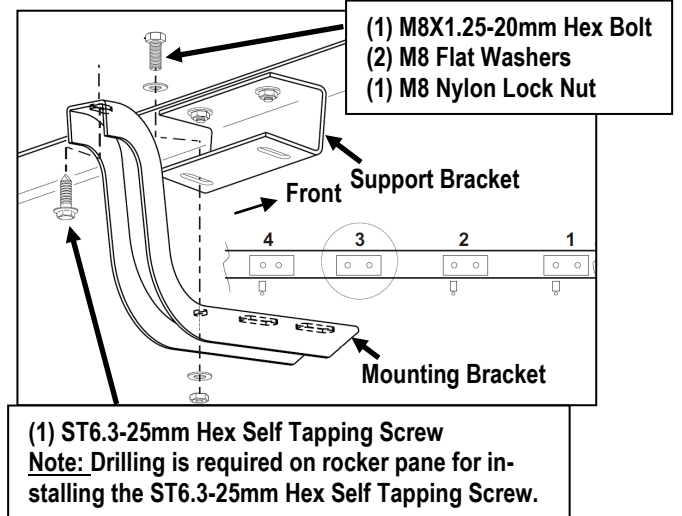
STEP 6

Move to the **location 3**. Drill (2) 5/16" holes on pinch weld, (Fig 1). And then attach the Support Bracket to the drilled holes with (2) M8X1.25-20mm Hex Bolts, (4) M8 Flat Washers, (2) M8 Nylon Lock Nuts, (Fig 5).

Attach the Mounting Bracket to the installed Support Bracket with (1) M8X1.25-20mm Hex Bolt, (2) M8 Flat Washers, (1) M8 Nylon Lock Nut, (Fig 6). Adjust the Mounting Bracket properly. Mark and drill (1) 6mm hole on rocker panel. Attach the mounting Bracket to the drilled hole with (1) ST6.3-25mm Hex Self tapping Screw, (Fig 6).



(Fig 5) Support Bracket Installation on Location 3



(Fig 6) Mounting Bracket Installation on Location 3

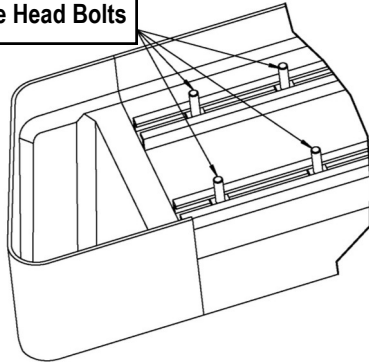
STEP 7

Select a Running Board. Slip (4) M6x1-20mm Square Head Bolts into each bottom channel (Fig 7). Carefully position the Running Board onto the (4) Mounting Brackets.

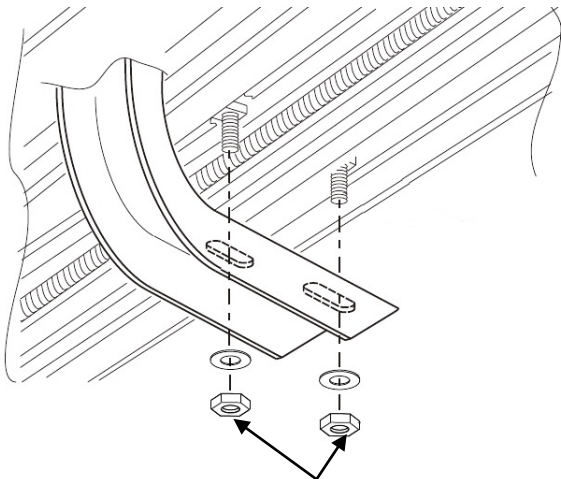
IMPORTANT: Do not slide the Running Board on the Brackets or the bottom surface of the board will be damaged. Attach the Running Board to each Mounting Bracket with (2) M6X1-20mm Square Head Bolts, (2) M6 Large Flat Washers and (2) M6 X1 Nylon Lock Nuts (Fig 8). Do not fully tighten at this time.

iBoard®

M6X1-20mm Square Head Bolts



(Fig 7) Slip (4) M6X1-20mm Square Head Bolts Into Each Bottom Channel



(2) M6X1-20mm Square Head Bolts
(2) M6 Large Flat Washers
(2) M6X1 Nylon Lock Nuts

(Fig 8) Running Board Installed Onto Mounting Bracket

STEP 8

Level and adjust the Running Board and fully tighten all hardware.

Important: Please follow the recommended Tightening Torques shown in the table on page 1. Don't over tighten, or the nuts/bolts will be damaged.

STEP 9

Repeat **Steps 1-8** for the other side Running Board installation. The installation is completed (**Fig 9**).



(Fig 9) Installation Completed

Attention

Do periodic inspections to the installation to make sure that all hardware is secure and tight.

In order to protect your bars/boards, please use only mild soap/non-abrasive products for cleaning.