

# iBoard®

## iBoard® by APS

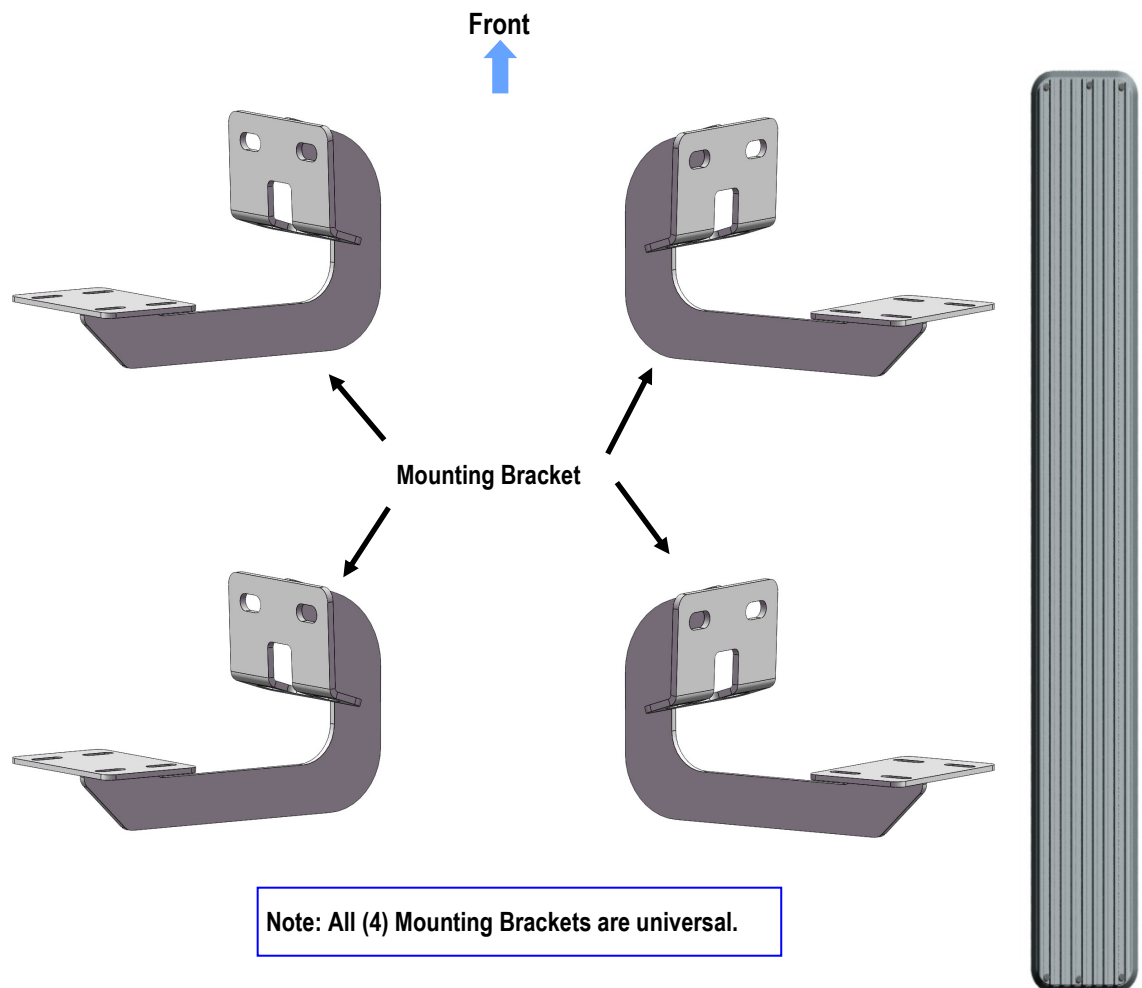
PART#: IB-176A-B

**READ INSTRUCTIONS CAREFULLY BEFORE STARTING INSTALLATION. REMOVE CONTENTS FROM BOX AND VERIFY ALL PARTS ARE PRESENT. ASSISTANCE IS RECOMMENDED.**

**\*ROCKER PANEL MOUNT  
\*NO DRILLING REQUIRED**

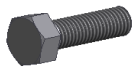
Fastener Size	Tightening Torque (ft-lbs)
6mm	6-7
8mm	16-18
10mm	31-32
12mm	56-58
14mm	92-94

### PART LIST



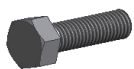
Customer Support: [info@iboardauto.com](mailto:info@iboardauto.com)

# iBoard®



**X8**

M8X1.25-30mm Hex Bolt



**X8**

M8X1.25-25mm Hex Bolt



**X16**

M8 Flat Washer



**X8**

M8 Large Flat Washer



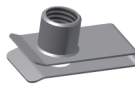
**X16**

M8 Lock Washer



**X8**

M8 Hex Nut



**X8**

M8 Clip Nut



**X16**

M6X1-20mm Square Head Bolt



**X16**

M6 Large Flat Washer



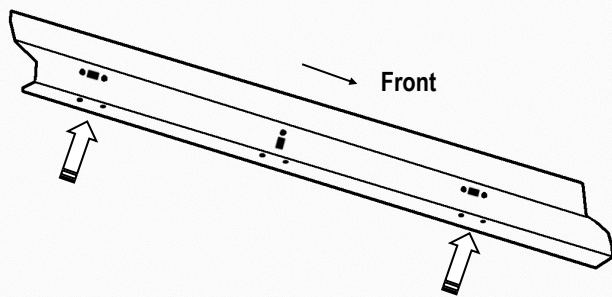
**X16**

M6X1 Nylon Lock Nut

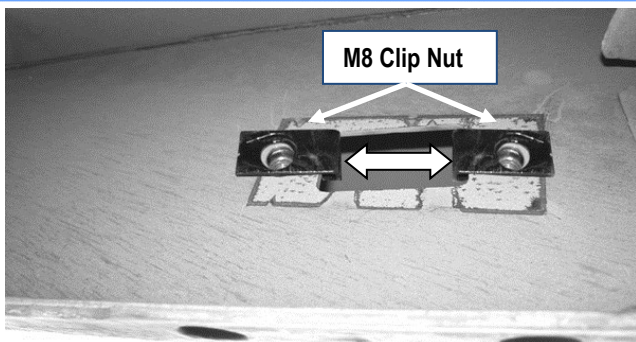
## STEP 1

Starting on the driver side front of the vehicle, locate the (2) holes on pinch weld, **(Fig 1)**. Next locate the rectangular opening and (2) small holes on the inner side of the body panel directly above the holes on the pinch weld, **(Fig 1 & 2)**.

**NOTE:** The holes on the inner of the body panel may be covered with sealing tape or insulation.



**(Fig 1) Driver Side Mounting Locations**



**(Fig 2) Slide M8 Clip Nuts Over Holes**

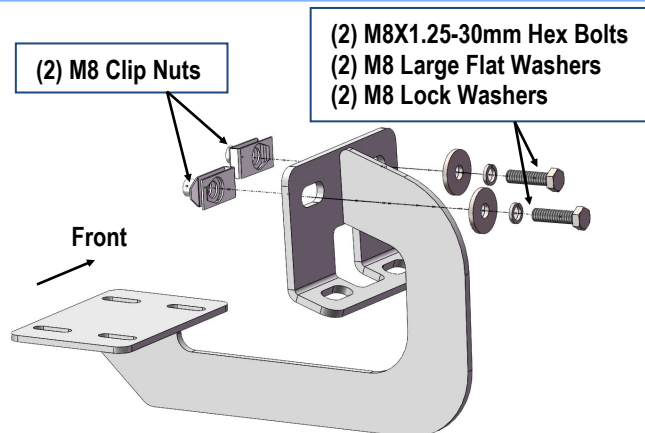
## STEP 2

Slide (1) M8 Clip Nut into the rectangular opening with the nut towards the inside. Line up the threaded nut on the clip with the round hole, **(Fig 2)**. Repeat to install another M8 Clip Nut in remaining round hole.

## STEP 3

Select (1) Mounting Bracket. Attach the Bracket to the installed (2) M8 Clip Nuts with the included (2) M8x1.25-30mm Hex Bolts, (2) M8 Lock Washers and (2) M8 Large Flat Washers, **(Fig 3)**. Do not fully tighten hardware at this time.

**NOTE:** Depending on model and year, the brake cable may be run on the inside or outside of the Bracket.



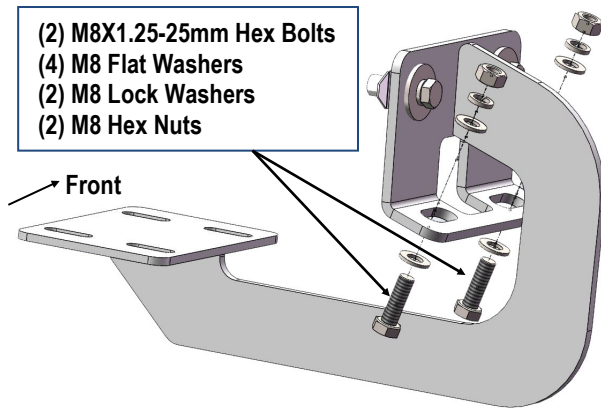
**(Fig 3) Driver Front Mounting Bracket Installed to Body Panel**

# iBoard®

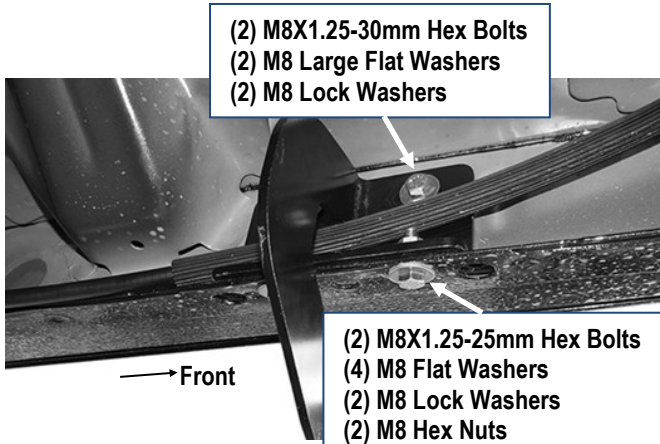
## STEP 4

Align the lower holes on the Mounting Bracket with the (2) holes on the pinch weld. Attach the Mounting Bracket to the pinch weld with (2) M8x1.25-25mm Hex Bolts, (4) M8 Flat Washers, (2) M8 Lock Washers and (2) M8 Hex Nuts, (**Fig 4 & 5**). Do not fully tighten hardware at this time.

**NOTE:** Insert the bolt up from the bottom of the pinch weld and through the Bracket.



(Fig 4) Driver Front Mounting Bracket Installed to Pinch Weld



(Fig 5) Driver Front Mounting Bracket Installation

## STEP 5

Move to Driver Side Rear Mounting Location. Repeat **Steps 1-4** for Driver Side Rear Mounting Bracket installation. Do not fully tighten hardware at this time.

## STEP 6

Select a Running Board. Slip (4) M6x1-20mm Square Head Bolts into each bottom channel (**Fig 6**). Carefully position the Running Board onto the (2) Mounting Brackets.

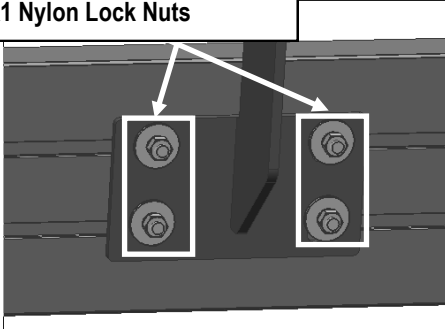
**IMPORTANT:** Do not slide the Running Board on the Brackets or the bottom surface of the board will be damaged. Attach the Running Board to Mounting Bracket with (8) M6x1-20mm Square Head Bolts, (8) M6 Large Flat Washers and (8) M6 X1 Nylon Lock Nuts (**Fig 7**). Do not fully tighten hardware at this time.



(Fig 6) Slip M6X1-20mm Square Head Bolts Into The Bottom Channels

# iBoard®

- (4) M6X1-20mm Square Head Bolts
- (4) M6 Large Flat Washers
- (4) M6X1 Nylon Lock Nuts



(Fig 7) Running Board Installed Onto Mounting Bracket  
(Example)

## STEP 7

Level and adjust the Running Board and fully tighten all hardware.

## STEP 8

Repeat **Steps 1-7** for the other side Running Board installation. The installation is completed (**Fig 8**).



(Fig 8) Installation Completed

### Attention

**Do periodic inspections to the installation to make sure that all hardware is secure and tight.**

**In order to protect your bars/boards, please use only mild soap/non-abrasive products for cleaning.**